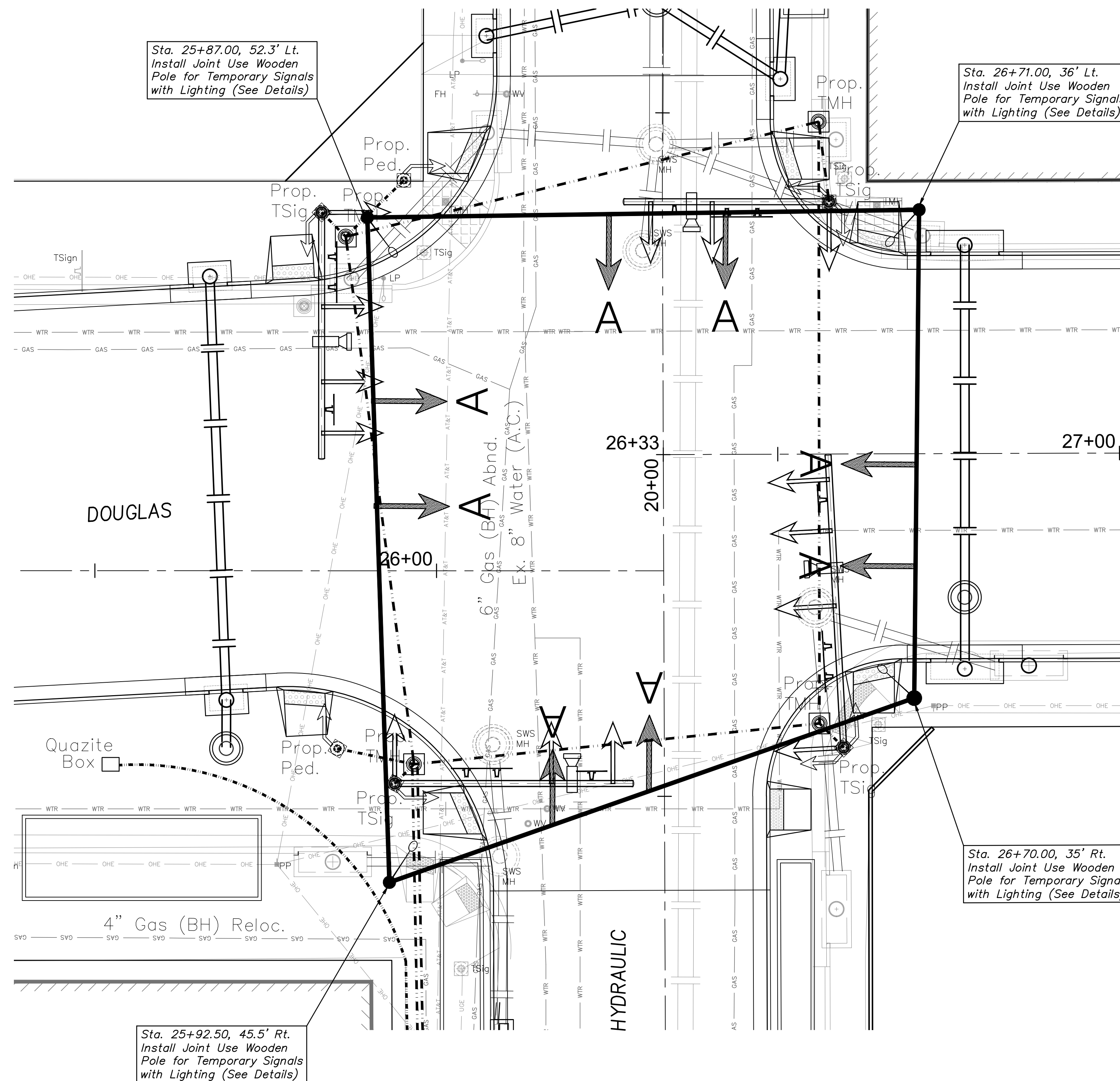


Built per plan



The Contractor shall install a box span signal system with wooden poles at the intersection of Douglas and Hydraulic. This temporary signal system will need to be in place and operating prior to construction of the intersection. All work associated with this, including pavement markings and advance warning signs, shall be considered *SUBSIDIARY* to the Lump Sum Bid Item "Traffic Signalization, Temporary".

