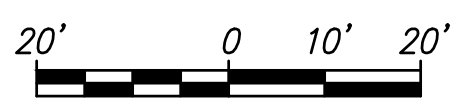


WATER METER SUMMARY				
BL Station	Lt./Rt.	Service (Long or Short)	Address	As Built
11+13	Rt.	Long	2832 S. GREENWAY	
11+71	Rt.	Long	2820 S. GREENWAY	

CURVE #1
 Rad = 227.651
 L = 157.077
 $\Delta = 39^{\circ}32'01''$
 N 1669622.68 E 1651098.39
 STA. 10+75.67, LINE 1 =
 STA. 12+18.41 GREENWAY, 22.00' LT.
 P.C. CURVE #1



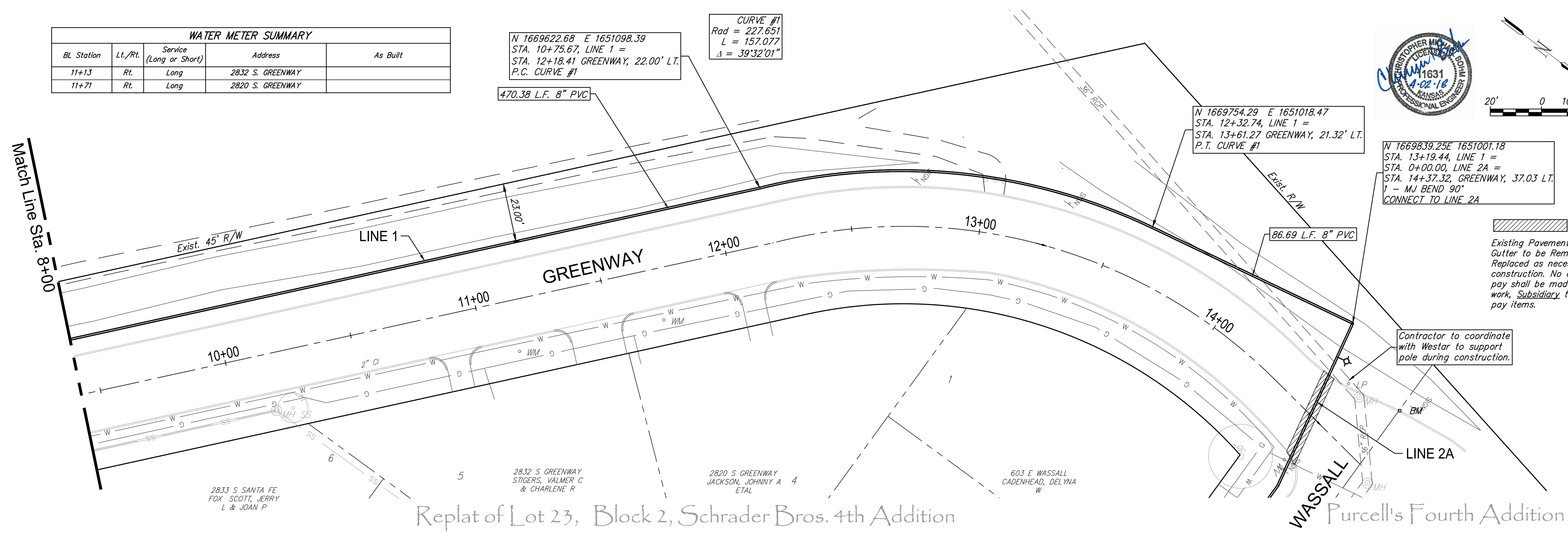
N 1669754.29 E 1651018.47
 STA. 12+32.74, LINE 1 =
 STA. 13+61.27 GREENWAY, 21.32' LT.
 P.T. CURVE #1

N 1669839.25E 1651001.18
 STA. 13+19.44, LINE 1 =
 STA. 0+00.00, LINE 2A =
 STA. 14+37.32, GREENWAY, 37.03' LT.
 1 - MJ BEND 90°
 CONNECT TO LINE 2A

Existing Pavement, Curb and Gutter to be Removed and Replaced as necessary for construction. No additional pay shall be made for this work, *Subsidiary* to other pay items.

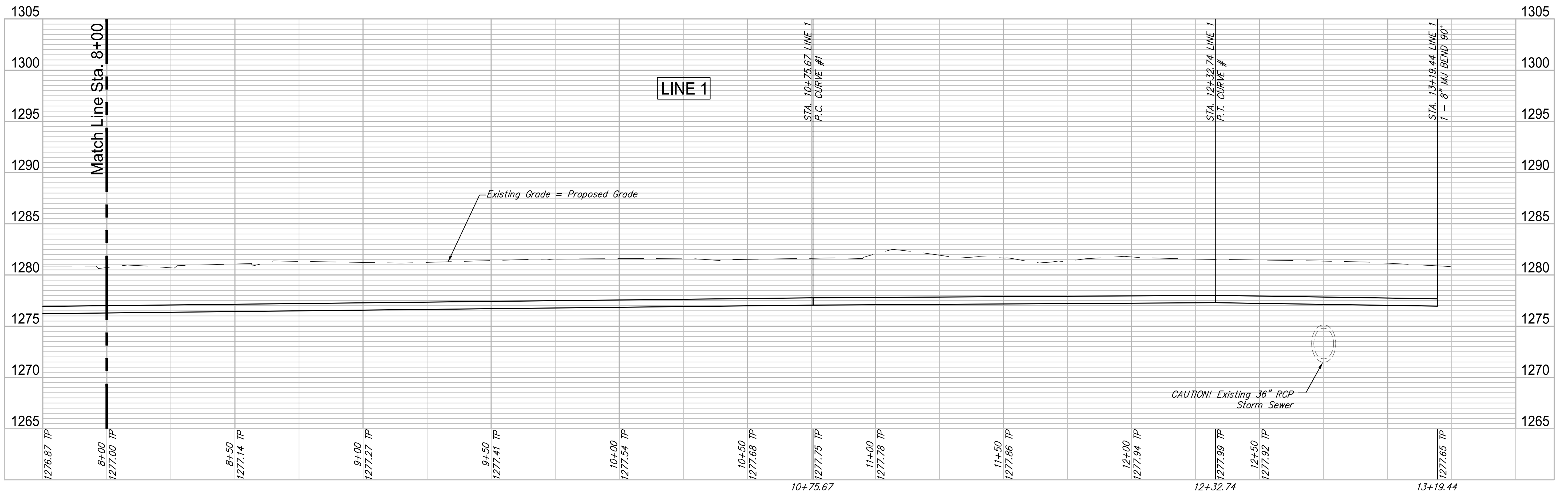
Contractor to coordinate with Westar to support pole during construction.

Match Line Sta. 8+00



Replat of Lot 23, Block 2, Schrader Bros. 4th Addition

Purcell's Fourth Addition



REVIEW: 12-7-16
 DATE: 4/20/18
 DESIGN: CMB / RA
 DRAWN: DRS / RA
 PROJECT NUMBER: 448-30721
 DRAWING FILE: LINE 1 - Greenway 2-2
ROSE MARIE WATER - Part A
GREENWAY-LINE 1 (3 of 3)
 Wichita, Kansas
 GARVER 4701W
 SHEET 9 OF 57
 © Copyright 2018, Garver

F:\Projects\Projects 4700-4799\4701W (Rose Marie waterline replacement)\LINE 1 - Greenway 2-2.dwg