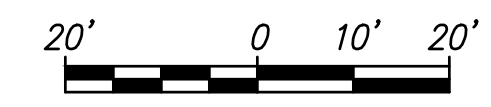
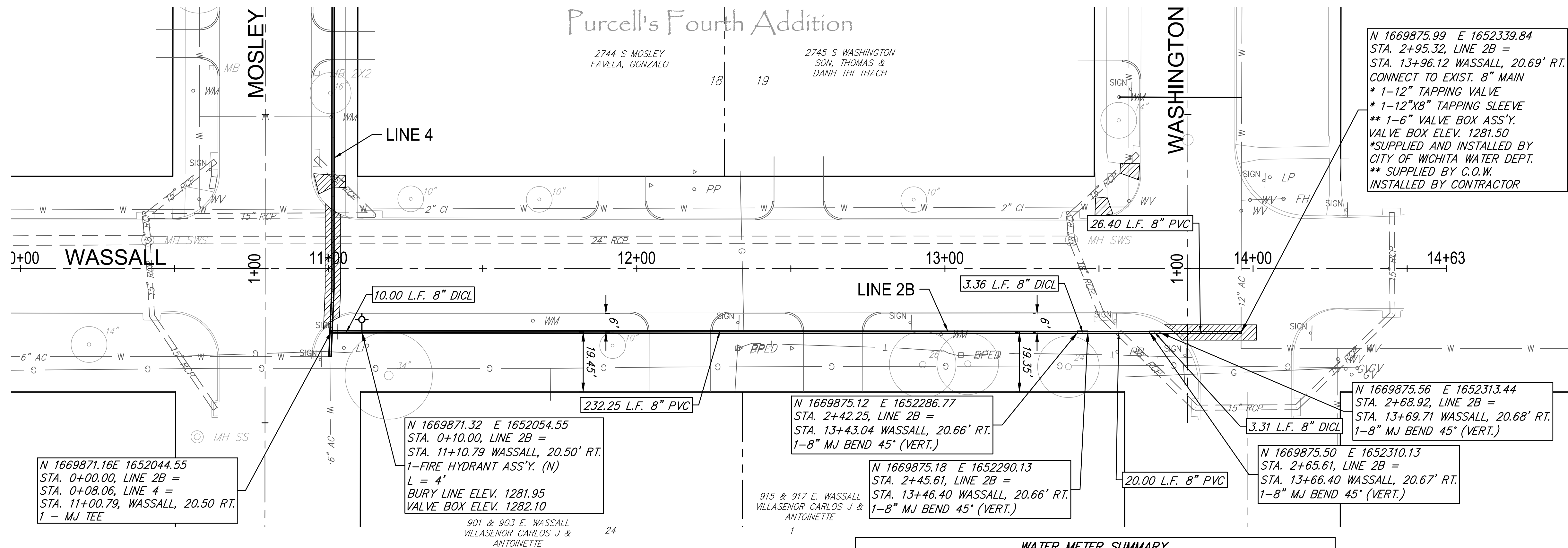


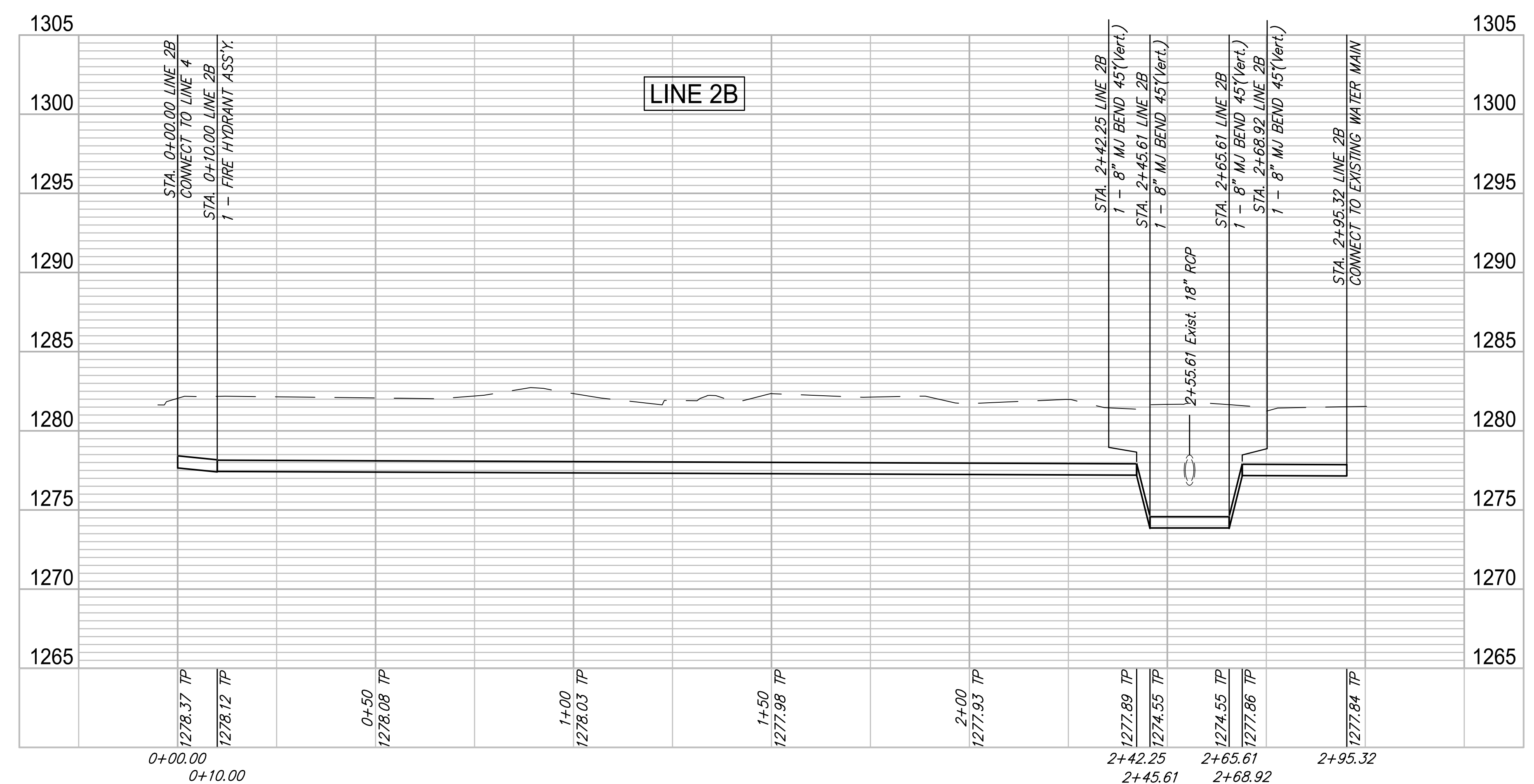
F:\Projects\Projects 4700-4799\4701W (Rose Marie waterline replacement)\LINE 2B - Wassall.dwg



Schrader Bros. 4th Addition

WATER METER SUMMARY				
BL Station	Lt./Rt.	Service (Long or Short)	Address	As Built
11+66 #1	Rt.	Short	901 E. WASSALL	
11+66 #1	Rt.	Short	903 E. WASSALL	
12+99 #2	Rt.	Short	915 E. WASSALL	
12+99 #2	Rt.	Short	917 E. WASSALL	

* These duplexes share the same tap and the same meter box.
 1 - 901 & 903 E. Wassall
 2 - 915 & 917 E. Wassall



ROSE MARIE WATER - Part A
WASSALL - LINE 2B
 Wichita, Kansas

PROJECT NUMBER: 448-30721
 DRAWING FILE: LINE 2B - Wassall

DESIGN: CMB / RA
 DRAWN: DRS / RA

REVIEW: 12-7-16
 DATE: 4/2/2018

GARVER JOB: 4701W
 SHEET: 12 OF 57

GARVER
 824 N. MAIN
 WICHITA, KS 67203
 316.264.8800
 WWW.GARVERUSA.COM