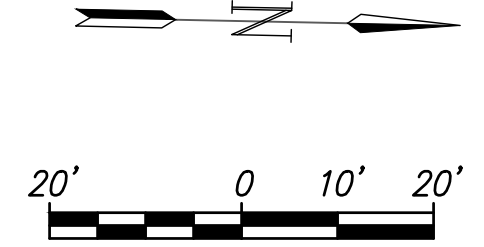
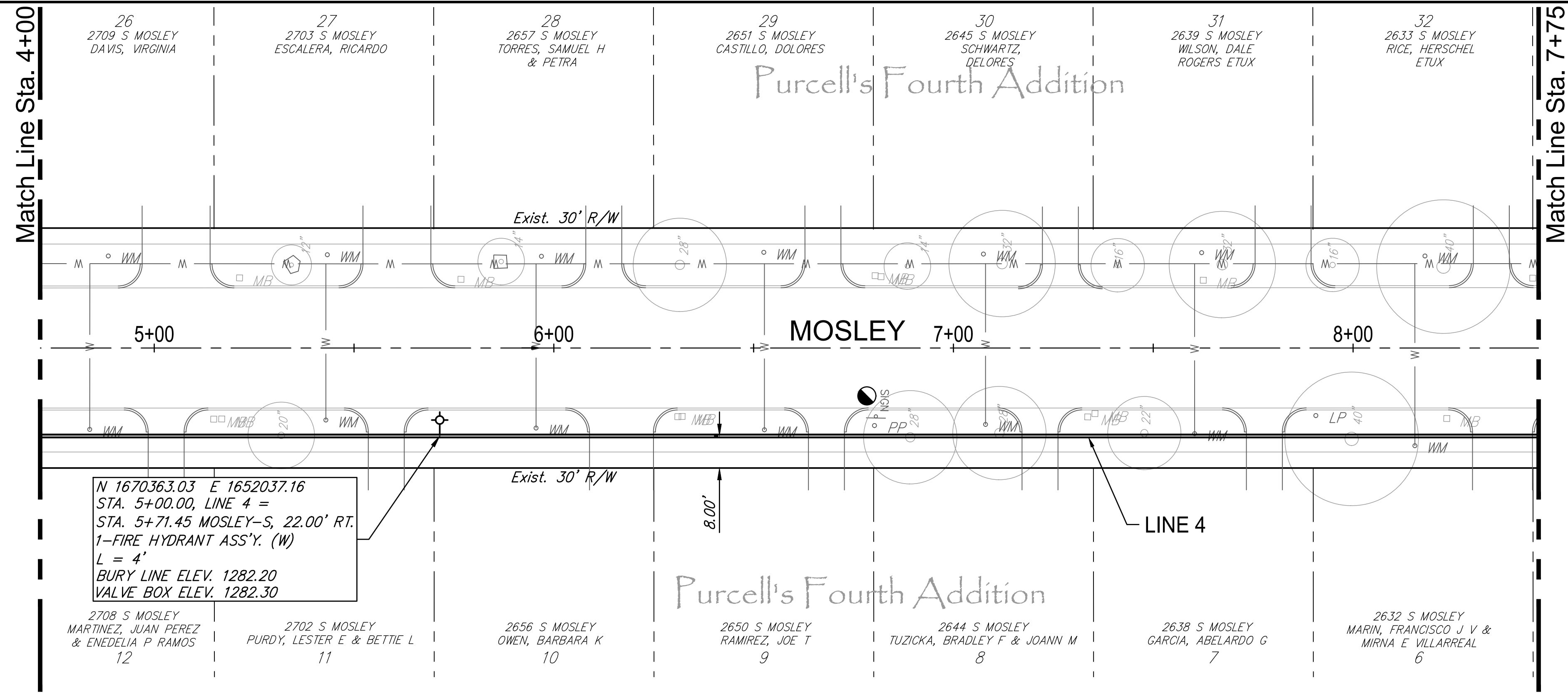
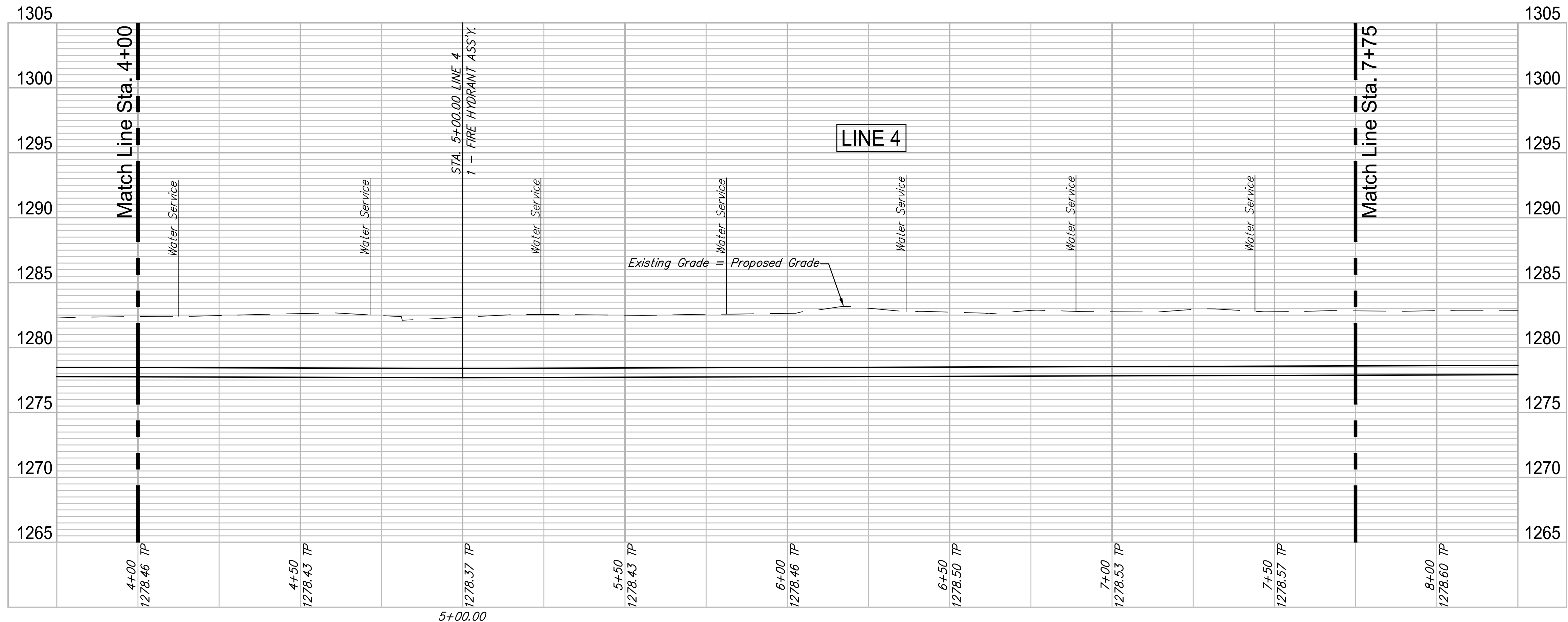


WATER METER SUMMARY				
BL Station	Lt./Rt.	Service (Long or Short)	Address	As Built
4+84	Rt.	Short	2708 S. MOSLEY	
4+89	Lt.	Long	2709 S. MOSLEY	
5+43	Lt.	Long	2703 S. MOSLEY	
5+43	Rt.	Short	2702 S. MOSLEY	
5+96	Rt.	Short	2656 S. MOSLEY	
5+97	Lt.	Long	2657 S. MOSLEY	
6+53	Lt.	Long	2651 S. MOSLEY	
6+53	Rt.	Short	2650 S. MOSLEY	
7+08	Lt.	Long	2645 S. MOSLEY	
7+08	Rt.	Short	2644 S. MOSLEY	
7+60	Rt.	Short	2638 S. MOSLEY	
7+62	Lt.	Long	2639 S. MOSLEY	
8+15	Rt.	Short	2632 S. MOSLEY	
8+18	Lt.	Long	2633 S. MOSLEY	



Contractor to coordinate with Westar to support pole during construction.

Existing Pavement, Curb and Gutter to be Removed and Replaced as necessary for construction. No additional pay shall be made for this work, Subsidiary to other pay items.



ROSE MARIE WATER - Part A
MOSLEY - LINE 4 (2 of 3)
 Wichita, Kansas

PROJECT NUMBER: 448-30721
 DRAWING FILE: LINE 4 - Mosley 1-2

DESIGN: CMB / RA
 DRAWN: DRS / RA

REVIEW: 12-7-16
 DATE: 4/20/18

GARVER JOB: 4701W
 SHEET: 18 OF 57

© Copyright 2018, Garver