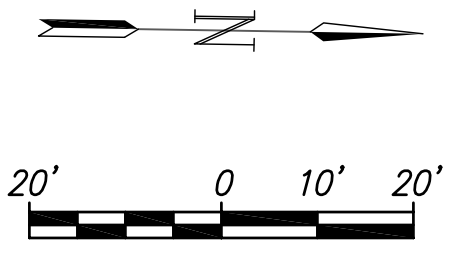
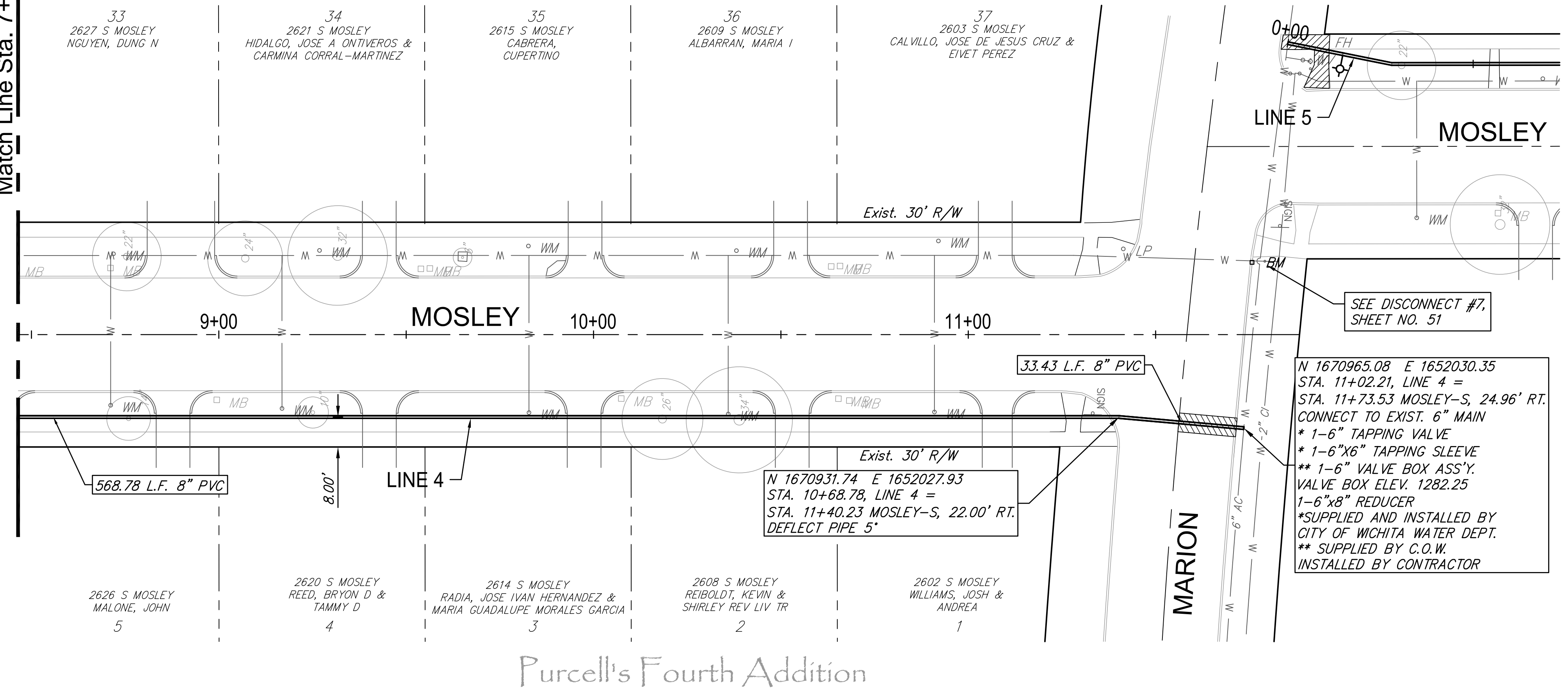


Purcell's Fourth Addition

Match Line Sta. 7+75

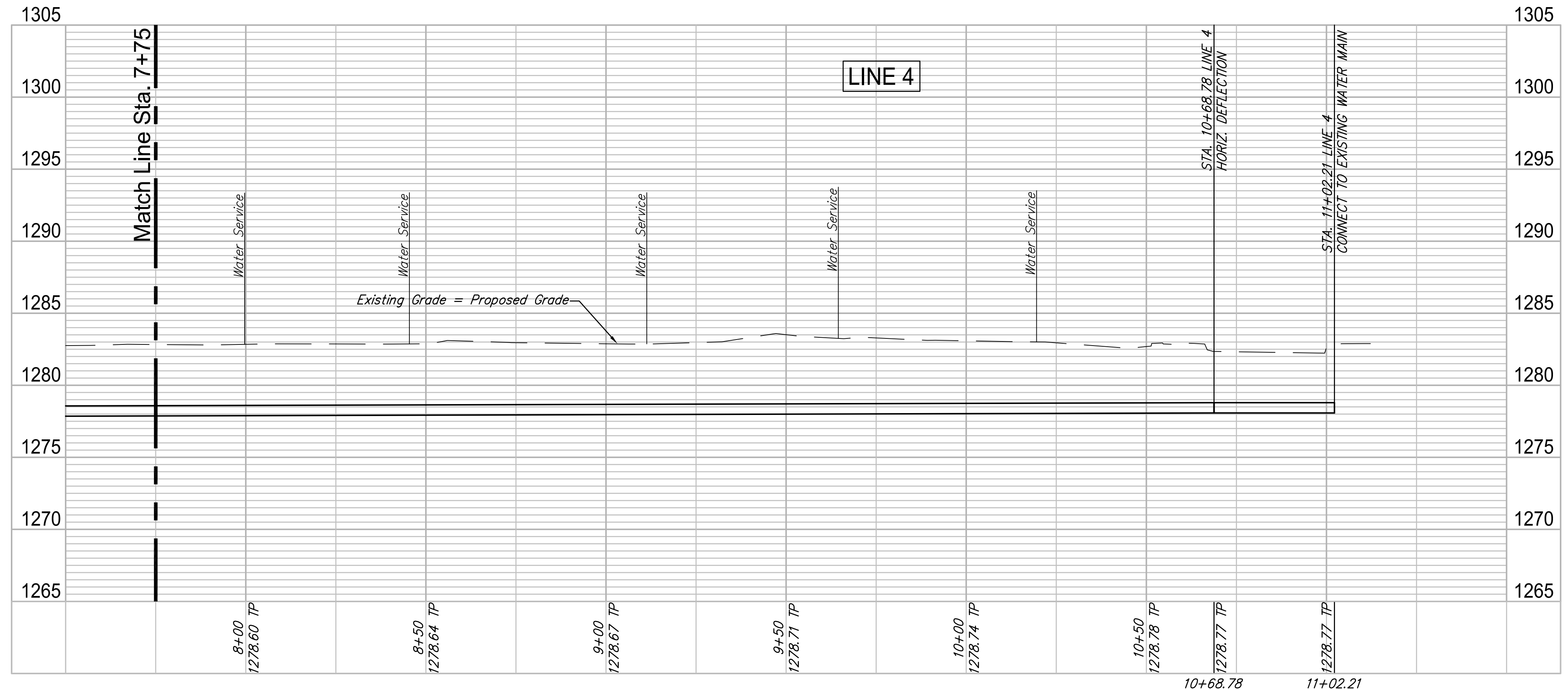


Contractor to coordinate with Westar to support pole during construction.

Existing Pavement, Curb and Gutter to be Removed and Replaced as necessary for reconstruction. No additional pay shall be made for this work, Subsidiary to other pay items.



WATER METER SUMMARY				
BL Station	Lt./Rt.	Service (Long or Short)	Address	As Built
8+71	Rt.	Short	2626 S. MOSLEY	
8+72	Lt.	Long	2627 S. MOSLEY	
9+17	Rt.	Short	2620 S. MOSLEY	
9+27	Lt.	Long	2621 S. MOSLEY	
9+83	Lt.	Long	2615 S. MOSLEY	
9+83	Rt.	Short	2614 S. MOSLEY	
10+36	Rt.	Short	2608 S. MOSLEY	
10+38	Lt.	Long	2609 S. MOSLEY	
10+91	Rt.	Short	2602 S. MOSLEY	
10+92	Lt.	Long	2603 S. MOSLEY	



REVIEW: 12-7-16  
DATE: 4/2/2018  
DESIGN: CMB / RA  
DRAWN: DRS / RA

PROJECT NUMBER: 448-30721  
DRAWING FILE: LINE 4 - Mosley 2-2

ROSE MARIE WATER - Part A  
MOSLEY - LINE 4 (3 of 3)  
Wichita, Kansas

GARVER JOB: 4701W  
SHEET: 19  
OF: 57