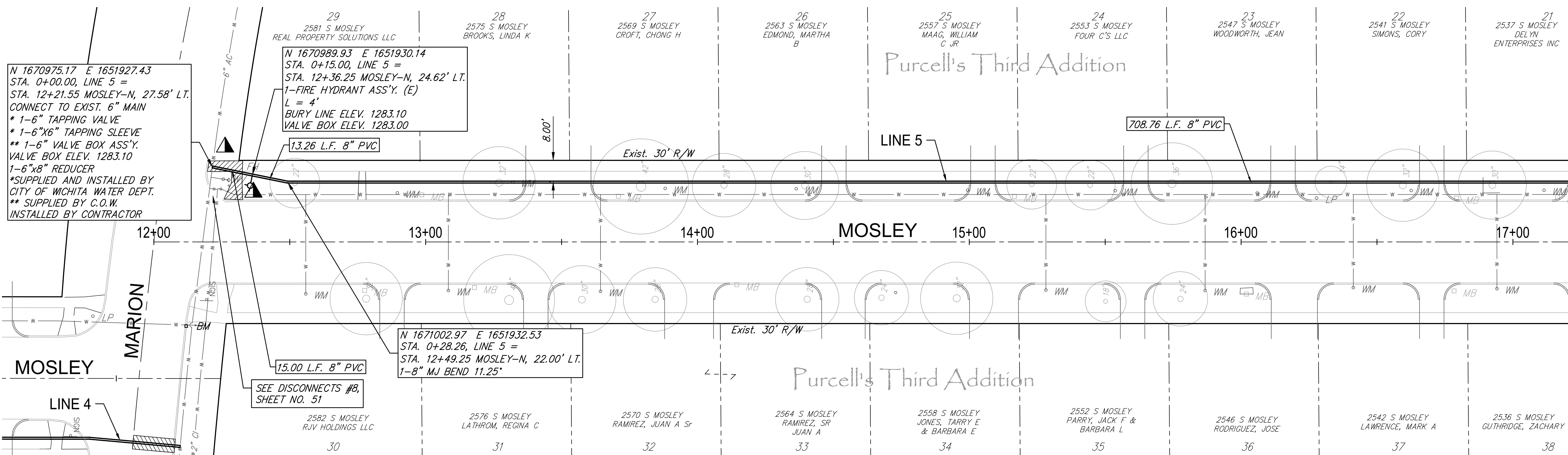


N 1670975.17 E 1651927.43  
 STA. 0+00.00, LINE 5 =  
 STA. 12+21.55 MOSLEY-N, 27.58' LT.  
 CONNECT TO EXIST. 6" MAIN  
 \* 1-6" TAPPING VALVE  
 \* 1-6"x6" TAPPING SLEEVE  
 \*\* 1-6" VALVE BOX ASS'Y.  
 VALVE BOX ELEV. 1283.10  
 1-6"x8" REDUCER  
 \*SUPPLIED AND INSTALLED BY  
 CITY OF WICHITA WATER DEPT.  
 \*\* SUPPLIED BY C.O.W.  
 INSTALLED BY CONTRACTOR

N 1670989.93 E 1651930.14  
 STA. 0+15.00, LINE 5 =  
 STA. 12+36.25 MOSLEY-N, 24.62' LT.  
 1-FIRE HYDRANT ASS'Y. (E)  
 L = 4'  
 BURY LINE ELEV. 1283.10  
 VALVE BOX ELEV. 1283.00

N 1671002.97 E 1651932.53  
 STA. 0+28.26, LINE 5 =  
 STA. 12+49.25 MOSLEY-N, 22.00' LT.  
 1-8" MJ BEND 11.25"

SEE DISCONNECTS #B,  
 SHEET NO. 51



Replace Wheel Chair Ramp

Existing Pavement, Curb and  
 Cutter to be Removed and  
 Replaced as necessary for  
 construction. No additional  
 pay shall be made for this  
 work. Subsidiary to other  
 pay items.

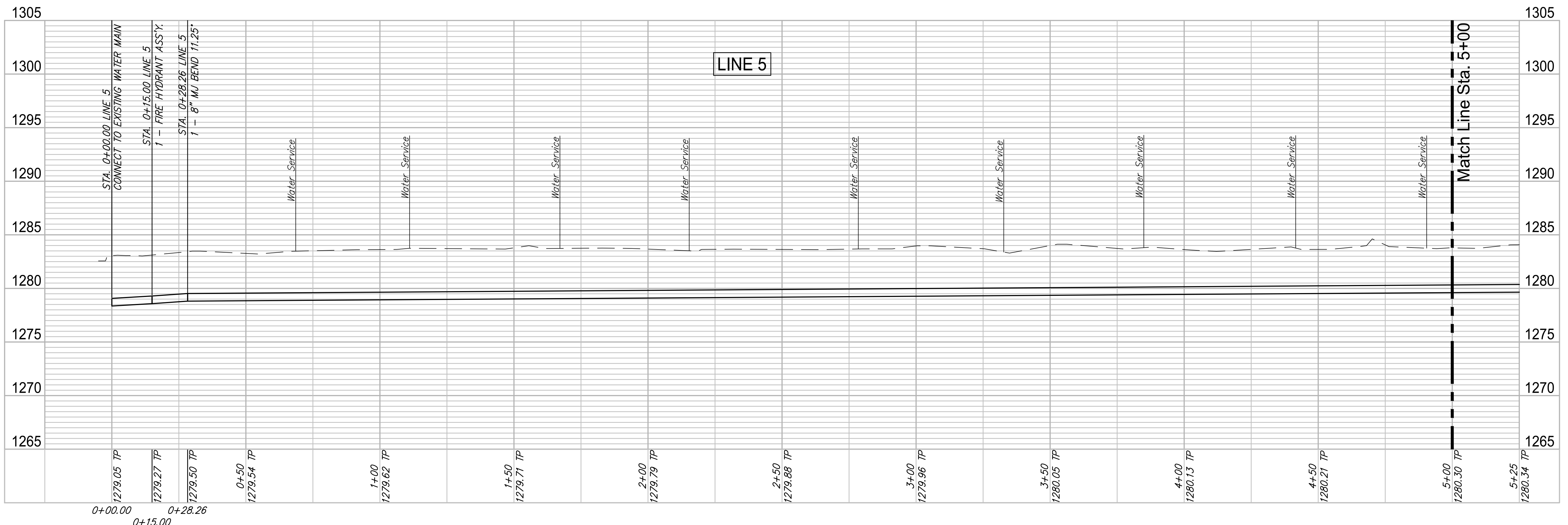


WATER METER SUMMARY				
BL Station	Lt./Rt.	Service (Long or Short)	Address	As Built
12+56	Rt.	Long	2582 S. MOSLEY	
12+90	Lt.	Short	2581 S. MOSLEY	
13+08	Rt.	Long	2576 S. MOSLEY	
13+32	Lt.	Short	2575 S. MOSLEY	
13+64	Rt.	Long	2570 S. MOSLEY	

WATER METER SUMMARY				
BL Station	Lt./Rt.	Service (Long or Short)	Address	As Built
13+88	Lt.	Short	2569 S. MOSLEY	
14+36	Lt.	Short	2563 S. MOSLEY	
14+73	Rt.	Long	2558 S. MOSLEY	
14+99	Lt.	Short	2557 S. MOSLEY	
15+28	Rt.	Long	2552 S. MOSLEY	

WATER METER SUMMARY				
BL Station	Lt./Rt.	Service (Long or Short)	Address	As Built
15+54	Lt.	Short	2553 S. MOSLEY	
15+87	Rt.	Long	2546 S. MOSLEY	
16+06	Lt.	Short	2547 S. MOSLEY	
16+41	Rt.	Long	2542 S. MOSLEY	
16+63	Lt.	Short	2541 S. MOSLEY	

WATER METER SUMMARY				
BL Station	Lt./Rt.	Service (Long or Short)	Address	As Built
16+94	Rt.	Long	2536 S. MOSLEY	
17+11	Lt.	Short	2537 S. MOSLEY	



PROJECT NUMBER: 448-30721  
 DRAWING FILE: LINE 5 - Mosley 1:2  
 DESIGN: CMB / RA  
 DRAWN: DRS / RA  
 REVIEW: 12-7-16  
 DATE: 4/20/18  
**ROSE MARIE WATER - Part A**  
**MOSLEY - LINE 5 (1 of 3)**  
 Wichita, Kansas  
 GARVER  
 4701 W  
 28 OF 57  
 © Copyright 2018, Garver