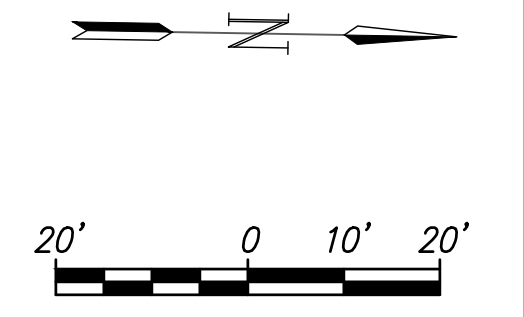
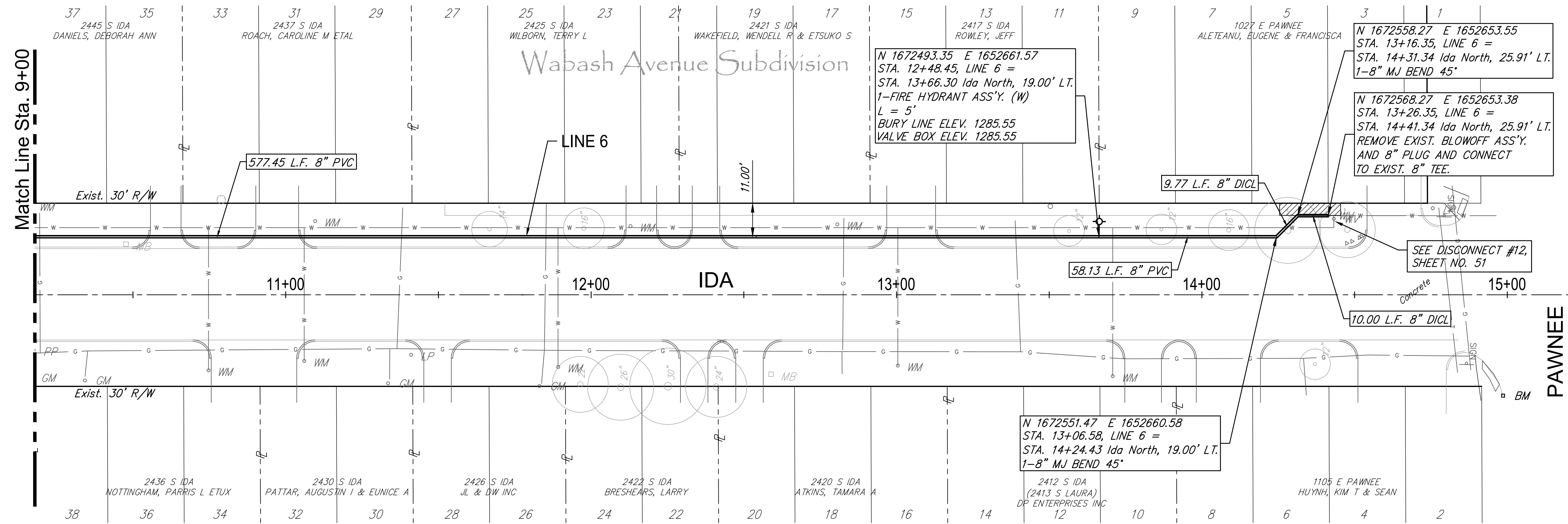


F:\Projects\Projects 4700-4799\4701W (Rose Marie waterline replacement)\LINE 6 - Ida 2-2.dwg

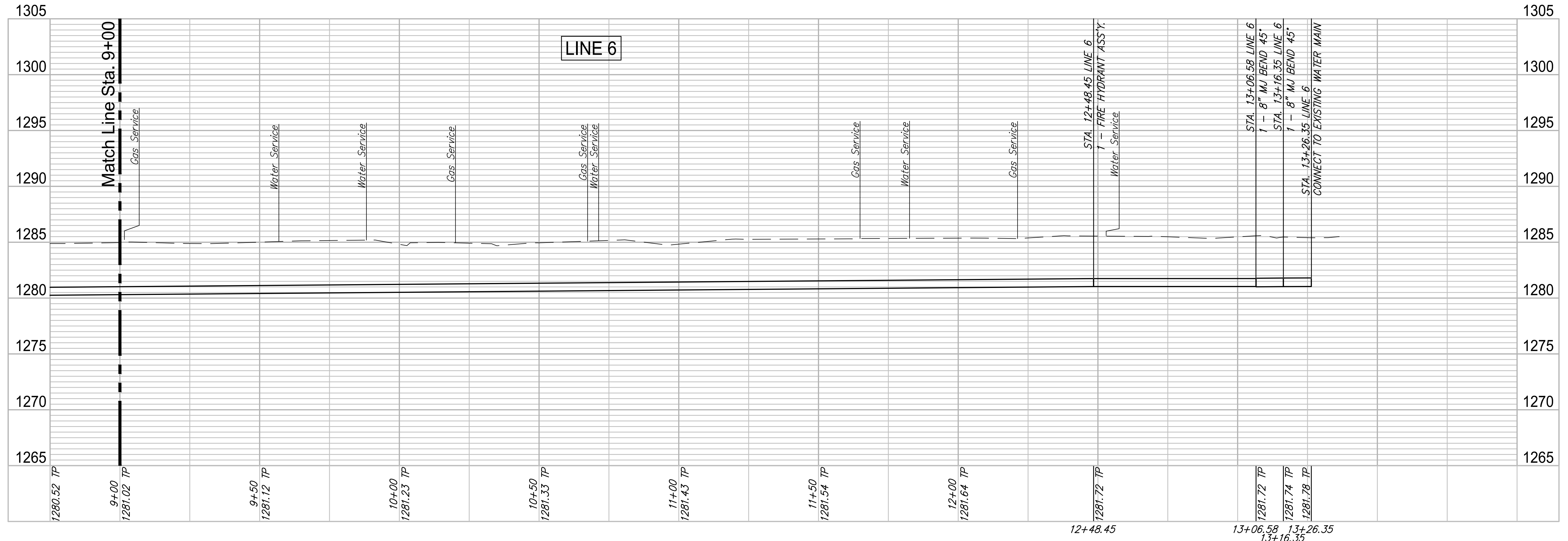


Existing Pavement, Curb and Gutter to be Removed and Replaced as necessary for construction. No additional pay shall be made for this work, *Subsidiary* to other pay items.

WATER METER SUMMARY				
BL Station	Lt./Rt.	Service (Long or Short)	Address	As Built
10+75	Rt.	Long	2436 S. IDA	
11+07	Rt.	Long	2430 S. IDA	
11+10	Lt.	Short	2437 S. IDA	
11+90	Rt.	Long	2426 S. IDA	

WATER METER SUMMARY				
BL Station	Lt./Rt.	Service (Long or Short)	Address	As Built
12+13	Lt.	Short	2425 S. IDA	
12+81	Lt.	Short	2421 S. IDA	
13+01	Rt.	Long	2420 S. IDA	
13+531	Lt.	Short	2417 S. IDA	

WATER METER SUMMARY				
BL Station	Lt./Rt.	Service (Long or Short)	Address	As Built
13+71	Rt.	Long	2412 S. IDA	



ROSE MARIE WATER - Part A
IDA - LINE 6 (3 of 3)
 Wichita, Kansas

PROJECT NUMBER: 448-90721
 DRAWING FILE: LINE 6 - Ida 2-2

DESIGN: CMB / RA
 DRAWN: DRS / RA

REVIEW: 12-7-16
 DATE: 4/2/2018

GARVER JOB: 4701W
 SHEET: 25 OF 57

GARVER
 924 N. MAIN
 WICHITA, KS 67203
 316.264.8800
 WWW.GARVERUSA.COM