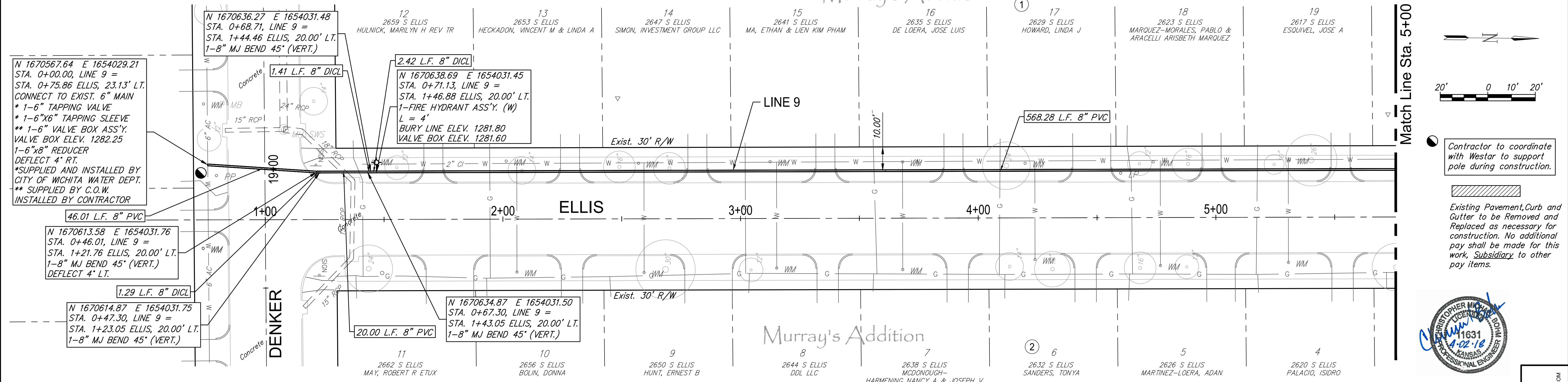


# Murray's Addition



Contractor to coordinate with Westar to support pole during construction.

Existing Pavement, Curb and Gutter to be Removed and Replaced as necessary for construction. No additional pay shall be made for this work. Subsidiary to other pay items.

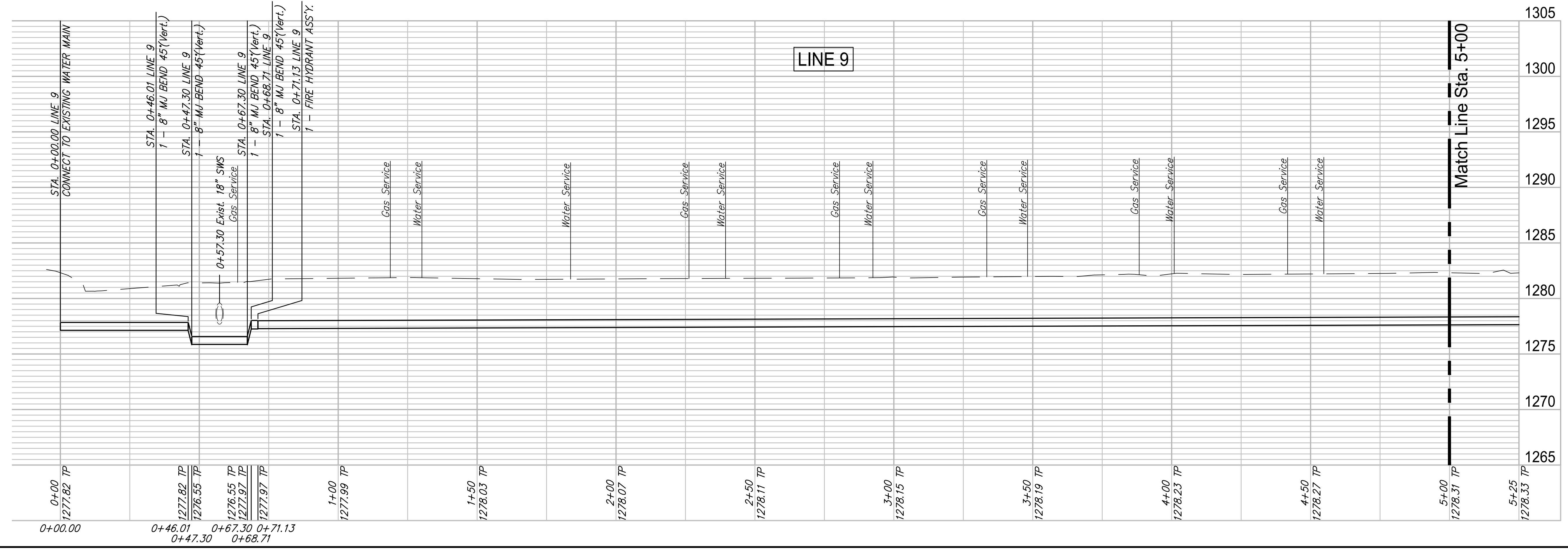


| WATER METER SUMMARY |         |                         |               |          |
|---------------------|---------|-------------------------|---------------|----------|
| BL Station          | Lt./Rt. | Service (Long or Short) | Address       | As Built |
| 1+45                | Lt.     | Short                   | 2659 S. ELLIS |          |
| 1+49                | Rt.     | Long                    | 2662 S. ELLIS |          |
| 2+01                | Lt.     | Short                   | 2653 S. ELLIS |          |
| 2+06                | Rt.     | Long                    | 2656 S. ELLIS |          |
| 2+57                | Lt.     | Short                   | 2647 S. ELLIS |          |

| WATER METER SUMMARY |         |                         |               |          |
|---------------------|---------|-------------------------|---------------|----------|
| BL Station          | Lt./Rt. | Service (Long or Short) | Address       | As Built |
| 2+59                | Rt.     | Long                    | 2650 S. ELLIS |          |
| 3+12                | Lt.     | Short                   | 2641 S. ELLIS |          |
| 3+15                | Rt.     | Long                    | 2644 S. ELLIS |          |
| 3+68                | Lt.     | Short                   | 2635 S. ELLIS |          |
| 3+68                | Rt.     | Long                    | 2638 S. ELLIS |          |

| WATER METER SUMMARY |         |                         |               |          |
|---------------------|---------|-------------------------|---------------|----------|
| BL Station          | Lt./Rt. | Service (Long or Short) | Address       | As Built |
| 4+20                | Lt.     | Short                   | 2629 S. ELLIS |          |
| 4+24                | Rt.     | Long                    | 2632 S. ELLIS |          |
| 4+74                | Lt.     | Short                   | 2623 S. ELLIS |          |
| 4+77                | Rt.     | Long                    | 2626 S. ELLIS |          |
| 5+30                | Rt.     | Long                    | 2620 S. ELLIS |          |

| WATER METER SUMMARY |         |                         |               |          |
|---------------------|---------|-------------------------|---------------|----------|
| BL Station          | Lt./Rt. | Service (Long or Short) | Address       | As Built |
| 5+31                | Lt.     | Short                   | 2617 S. ELLIS |          |



PROJECT NUMBER: 448-30721  
 DRAWING FILE: LINE 9 - ELLIS 1-2  
 DESIGN: CMB / RA  
 DRAWN: DRS / RA  
 REVIEW: 12-7-16  
 DATE: 4/20/18  
**ROSE MARIE WATER - Part A**  
**ELLIS - LINE 9 (1 of 3)**  
 Wichita, Kansas  
 GARVER INC  
 4701 W  
 31  
 OF  
 57  
 © Copyright 2018, Garver

F:\Projects\Projects 4700-4799\4701W (Rose Marie waterline replacement)\LINE 9 - Ellis 1-2.dwg