

Match Line Sta. 9+00

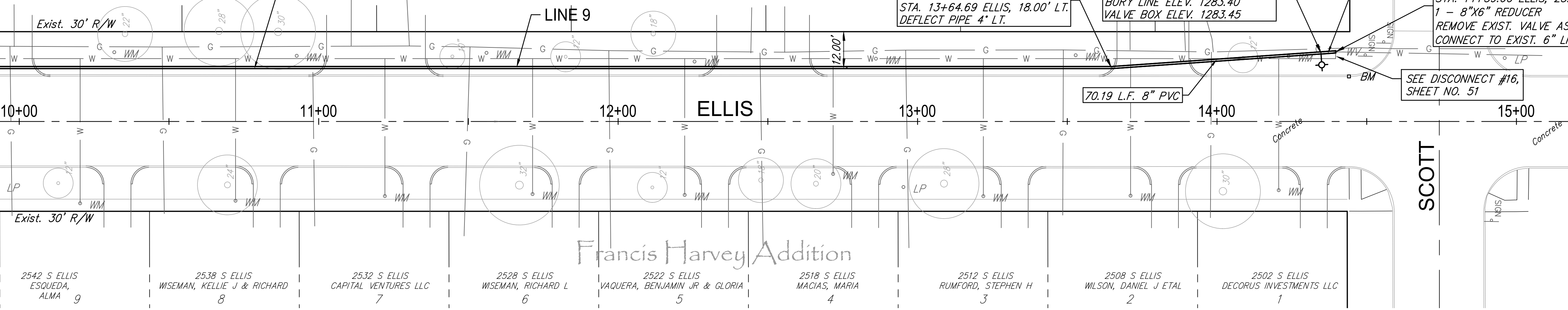
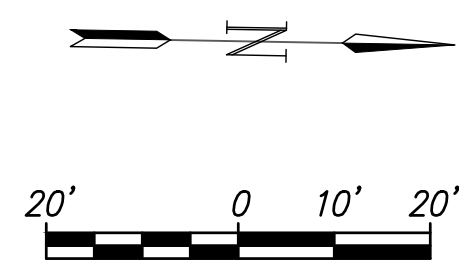
2537 & 2539 S ELLIS WINEGAR, GARY C & PATSY J LIV TR 57
 2531 & 2533 S ELLIS WINEGAR, GARY C & PATSY J LIV TR 56
 2525 & 2527 S ELLIS WINEGAR, GARY C & PATSY J LIV TR 55
 2519 & 2521 S ELLIS WINEGAR, GARY C & PATSY J LIV TR 54
 2513 & 2515 S ELLIS ZERR, RONALD C & DEBORAH R 53
 2507 & 2509 S ELLIS SPITZER, LEROY R & MARY M 52
 2501 & 2503 S ELLIS SPITZER, LEROY R & MARY M 51

Womer - Greer's 3rd Addition

N 1671926.18 E 1654012.14
 STA. 13+59.13, LINE 9 =
 STA. 14+34.71 ELLIS, 22.90' LT.
 1-FIRE HYDRANT ASS'Y. (E)
 L = 4'
 BURY LINE ELEV. 1283.40
 VALVE BOX ELEV. 1283.45

N 1671856.26 E 1654018.27
 STA. 12+88.94, LINE 9 =
 STA. 13+64.69 ELLIS, 18.00' LT.
 DEFLECT PIPE 4' LT.

N 1671931.06 E 1654011.71
 STA. 13+64.02, LINE 9 =
 STA. 14+39.60 ELLIS, 23.24' LT.
 1 - 8"x6" REDUCER
 REMOVE EXIST. VALVE ASS'Y.
 CONNECT TO EXIST. 6" LINE



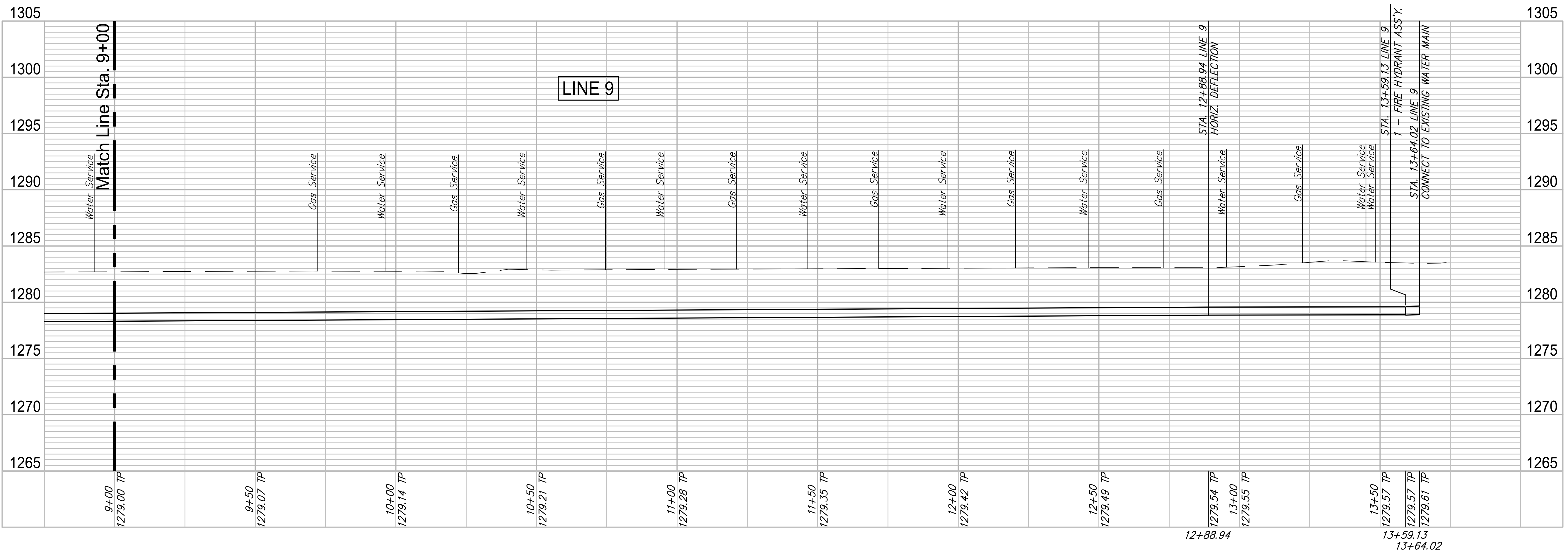
Francis Harvey Addition

2542 S ELLIS ESQUEDA, ALMA 9
 2538 S ELLIS WISEMAN, KELLIE J & RICHARD 8
 2532 S ELLIS CAPITAL VENTURES LLC 7
 2528 S ELLIS WISEMAN, RICHARD L 6
 2522 S ELLIS VAQUERA, BENJAMIN JR & GLORIA 5
 2518 S ELLIS MACIAS, MARIA 4
 2512 S ELLIS RUMFORD, STEPHEN H 3
 2508 S ELLIS WILSON, DANIEL J ETAL 2
 2502 S ELLIS DECORUS INVESTMENTS LLC 1

Existing Pavement, Curb and Gutter to be Removed and Replaced as necessary for construction. No additional pay shall be made for this work, Subsidiary to other pay items.

WATER METER SUMMARY				
BL Station	Lt./Rt.	Service (Long or Short)	Address	As Built
10+20	Rt.	Long	2542 S. ELLIS	
10+32	Lt.	Short	2537 S. ELLIS	
10+72	Rt.	Long	2538 S. ELLIS	
10+93	Lt.	Short	2531 S. ELLIS	
11+22	Rt.	Long	2532 S. ELLIS	
11+56	Lt.	Short	2525 S. ELLIS	
11+71	Rt.	Long	2528 S. ELLIS	
12+22	Rt.	Long	2522 S. ELLIS	
12+26	Lt.	Short	2519 S. ELLIS	

WATER METER SUMMARY				
BL Station	Lt./Rt.	Service (Long or Short)	Address	As Built
12+72	Rt.	Long	2518 S. ELLIS	
12+86	Lt.	Short	2513 S. ELLIS	
13+22	Rt.	Long	2512 S. ELLIS	
13+53	Lt.	Short	2507 S. ELLIS	
13+71	Rt.	Long	2508 S. ELLIS	
14+21	Rt.	Long	2502 S. ELLIS	
14+24	Lt.	Short	2501 S. ELLIS	



REVIEW	12-7-16
DATE	4/2/2018
DESIGN	CMB / RA
DRAWN	DRS / RA

PROJECT NUMBER	448-90721
DRAWING FILE	LINE 9 - ELLIS 2-2

ROSE MARIE WATER - Part A
ELLIS - LINE 9 (3 of 3)
 Wichita, Kansas

F:\Projects\Projects 4700-4799\4701W (Rose Marie waterline replacement)\LINE 9 - Ellis 2-2.dwg