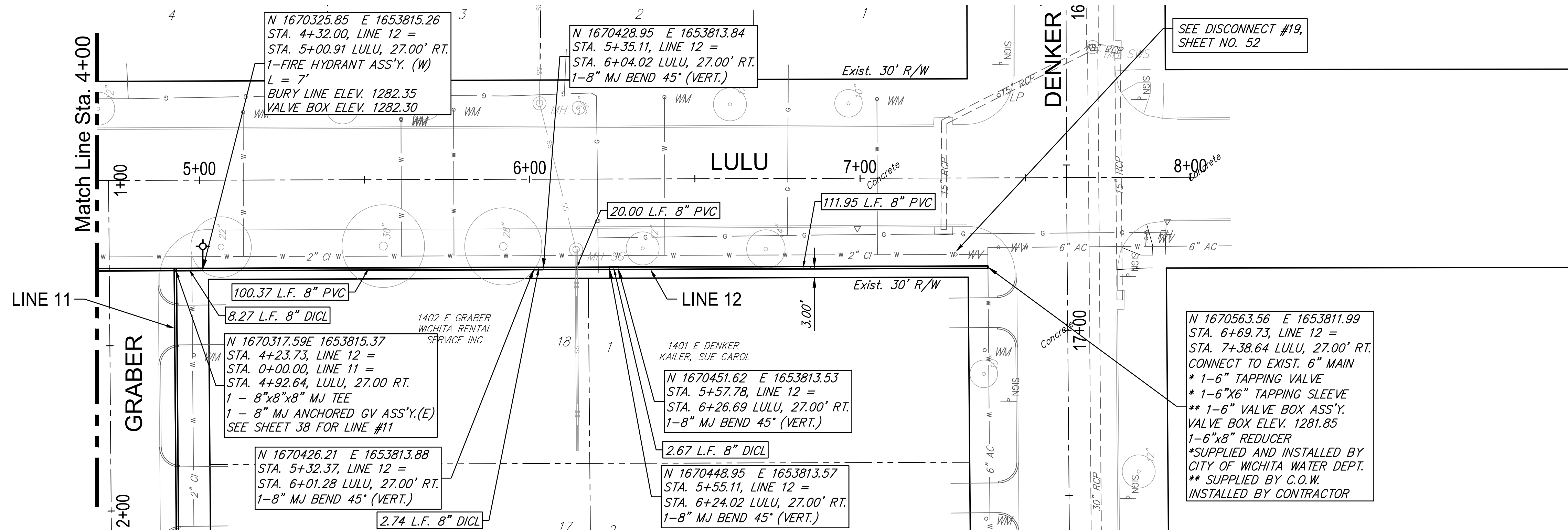


2719 S LULU  
HARPEL, JAMES

2713 S LULU  
BRUNGARDT, MELVIN  
J ETUX

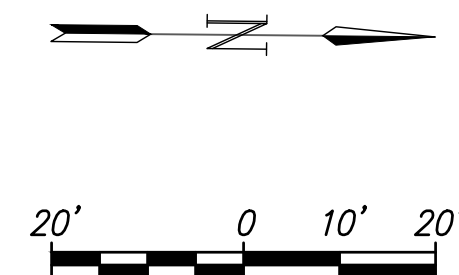
2707 S LULU  
RUFENACHT, ROY

2701 S LULU  
WEIGAND, PAUL W



SEE DISCONNECT #19,  
SHEET NO. 52

N 1670563.56 E 1653811.99  
STA. 6+69.73, LINE 12 =  
STA. 7+38.64 LULU, 27.00' RT.  
CONNECT TO EXIST. 6\"/>



Existing Pavement, Curb and Gutter to be Removed and Replaced as necessary for construction. No additional pay shall be made for this work, *Subsidiary* to other pay items.

WATER METER SUMMARY				
BL Station	Lt./Rt.	Service (Long or Short)	Address	As Built
5+13	Lt.	Long	2719 S. LULU	
5+61	Lt.	Long	2713 S. LULU	
5+77	Lt.	Long	2713 S. LULU	
6+41	Lt.	Long	2707 S. LULU	
7+05	Lt.	Long	2701 S. LULU	



GARVER  
824 N. MAIN  
WICHITA, KS 67203  
316.264.8800  
WWW.GARVERUSA.COM

REVIEW  
12-7-16  
DATE  
4/2/2018

DESIGN  
CMB / RA  
DRAWN  
DRS / RA

PROJECT NUMBER  
448-90721

DRAWING FILE  
LINE 12 - Lulu

ROSE MARIE WATER - Part A  
LULU - LINE 12 (2 of 2)  
Wichita, Kansas

GARVER USA  
4701W  
SHEET  
39  
OF  
57

