

WATER METER SUMMARY

BL Station	Lt./Rt.	Service (Long or Short)	Address	As Built
13+33	Rt.	Long	2734 S. LARKIN	
13+80	Rt.	Long	2722 S. LARKIN	
14+09	Lt.	Short	2725 S. LARKIN	
14+63	Rt.	Long	2710 S. LARKIN	
15+50	Lt.	Short	2701 S. LARKIN	
15+72	Rt.	Long	2702 S. LARKIN	

N 1670469.38 E 1652915.42
 STA. 15+89.07, LINE 13 =
 STA. 16+93.74 LARKIN, 24.00' LT.
 CONNECT TO EXIST. 6" MAIN
 * 1-6" TAPPING VALVE
 * 1-6"x6" TAPPING SLEEVE
 ** 1-6" VALVE BOX ASS'Y.
 VALVE BOX ELEV. 1282.50
 1-6"x8" REDUCER
 *SUPPLIED AND INSTALLED BY
 CITY OF WICHITA WATER DEPT.
 ** SUPPLIED BY C.O.W.
 INSTALLED BY CONTRACTOR

N 1670395.11 E 1653069.38
 STA. 14+18.13, LINE 13 =
 STA. 15+22.80 LARKIN, 24.00' LT.
 1-8" MJ BEND 45° (VERT.)

N 1670396.06 E 1653067.40
 STA. 14+20.32, LINE 13 =
 STA. 15+24.99 LARKIN, 24.00' LT.
 1-8" MJ BEND 45° (VERT.)

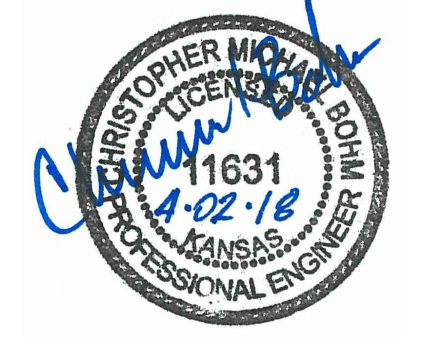
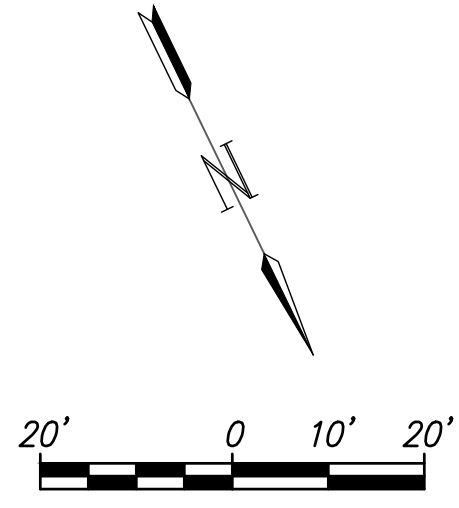
N 1670386.42 E 1653087.39
 STA. 13+98.13, LINE 13 =
 STA. 15+02.80 LARKIN, 24.00' LT.
 1-8" MJ BEND 45° (VERT.)

N 1670385.40 E 1653089.49
 STA. 13+95.80, LINE 13 =
 STA. 15+00.47 LARKIN, 24.00' LT.
 1-8" MJ BEND 45° (VERT.)

N 1670258.64 E 1653211.93
 STA. 12+10.95, LINE 13 =
 STA. 12+91.45 LARKIN, 18.37' LT.
 1-8" MJ BEND 22.5°

N 1670324.53 E 1653182.92
 STA. 12+82.95, LINE 13 =
 STA. 13+75.99 LARKIN, 23.29' LT.
 1-8" MJ BEND 22.5°

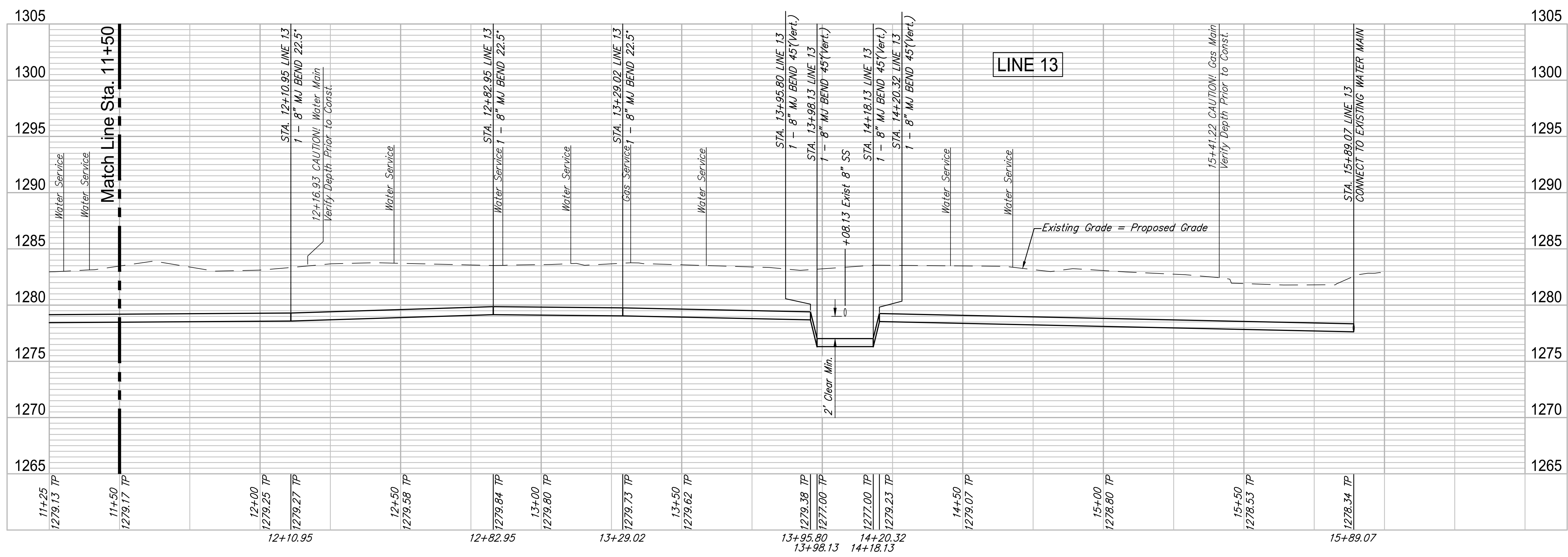
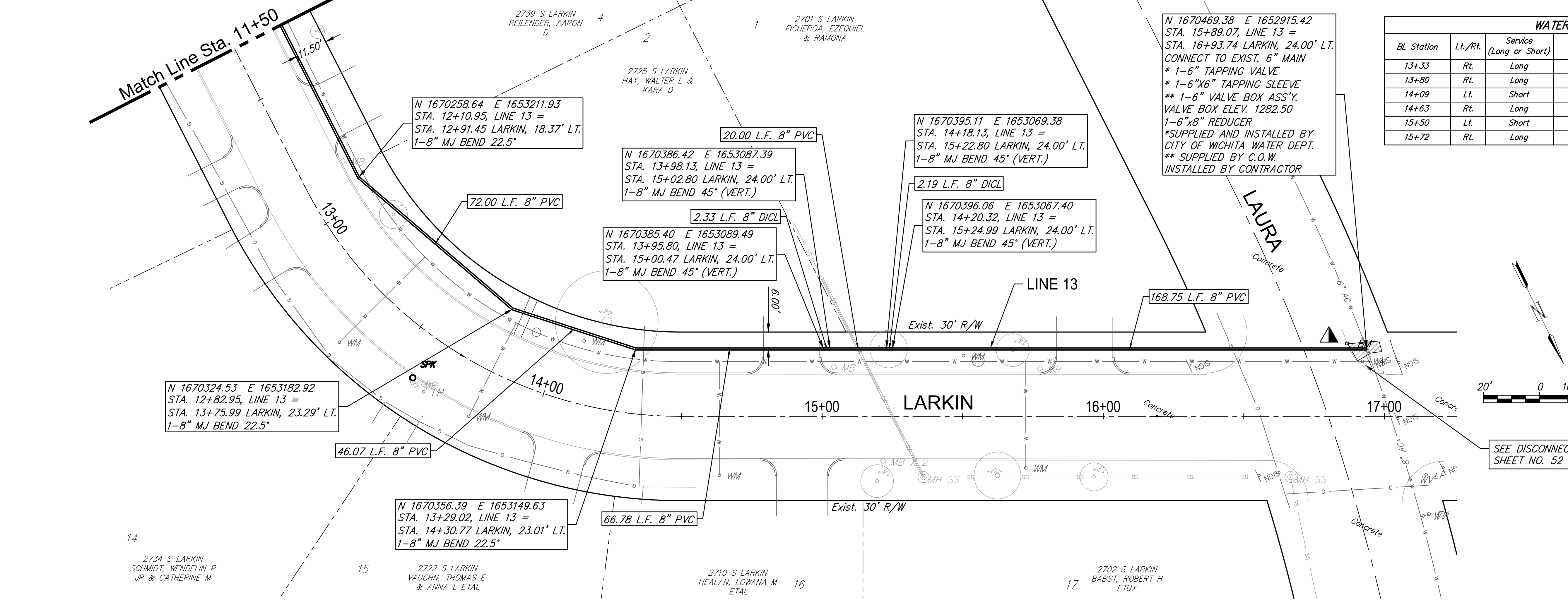
N 1670356.39 E 1653149.63
 STA. 13+29.02, LINE 13 =
 STA. 14+30.77 LARKIN, 23.01' LT.
 1-8" MJ BEND 22.5°



Replace Wheel Chair Ramp

SEE DISCONNECT #25, SHEET NO. 52

Existing Pavement, Curb and Gutter to be Removed and Replaced as necessary for construction. No additional pay shall be made for this work, Subsidiary to other pay items.



ROSE MARIE WATER - Part A
LARKIN - LINE 13 (3 OF 3)
 Wichita, Kansas

PROJECT NUMBER: 448-30721
 DRAWING FILE: LINE 13 - Larkin 2-2

DESIGN: CMB / RA
 DRAWN: DRS / RA

REVIEW: 12-7-16
 DATE: 4/20/18

GARVER JOB: 4701W
 SHEET: 42 OF 57
 © Copyright 2018, Garver

F:\Projects\Projects 4700-4799\4701W (Rose Marie waterline replacement)\LINE 13 - Larkin 2-2.dwg