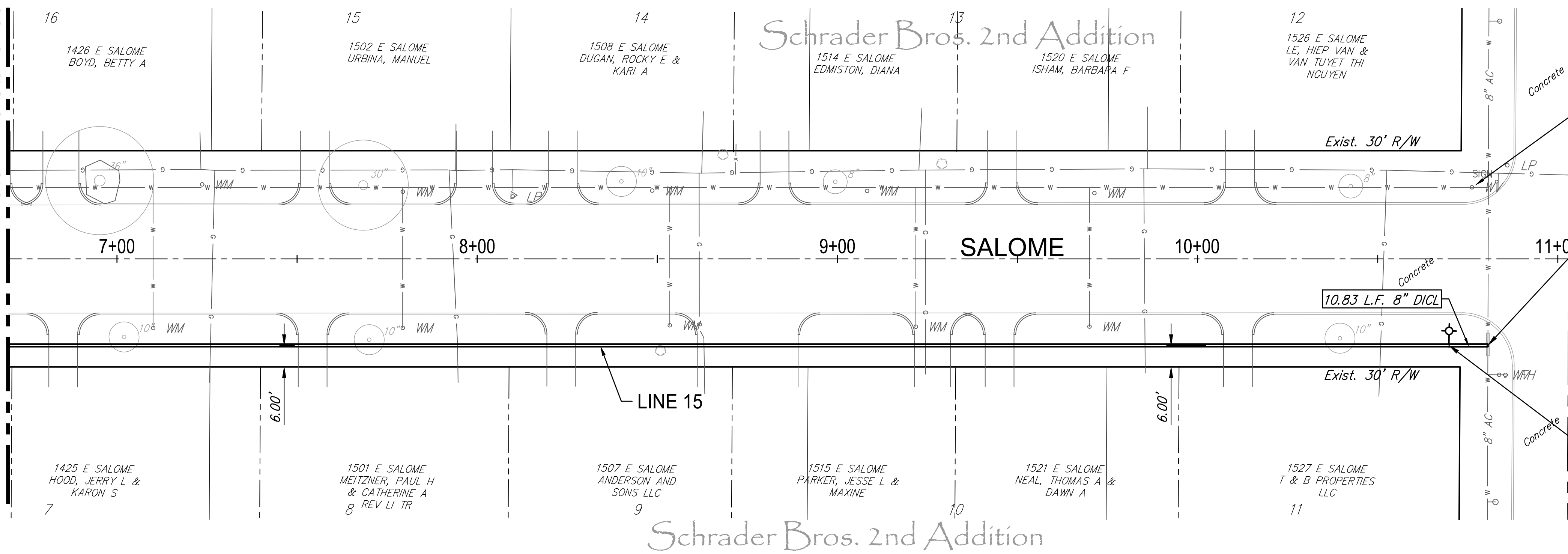


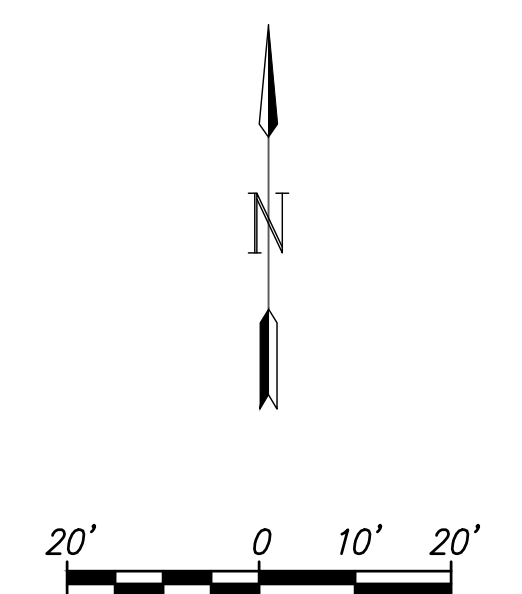
Match Line Sta. 5+50



SEE DISCONNECT #29, SHEET NO. 52

N 1669384.94 E 1654520.10
STA. 9+60.83, LINE 15 =
STA. 10+80.60 SALOME, 24.00' RT.
CONNECT TO EXIST. 8" MAIN
* 1-8" TAPPING VALVE
* 1-8"X8" TAPPING SLEEVE
** 1-6" VALVE BOX ASS'Y.
VALVE BOX ELEV. 1282.30
* SUPPLIED AND INSTALLED BY
CITY OF WICHITA WATER DEPT.
** SUPPLIED BY C.O.W.
INSTALLED BY CONTRACTOR

N 1669384.74 E 1654509.27
STA. 9+50.00, LINE 15 =
STA. 10+69.76 SALOME, 24.00' RT.
1-FIRE HYDRANT ASS'Y. (N)
L = 4'
BURY LINE ELEV. 1282.60
VALVE BOX ELEV. 1282.65



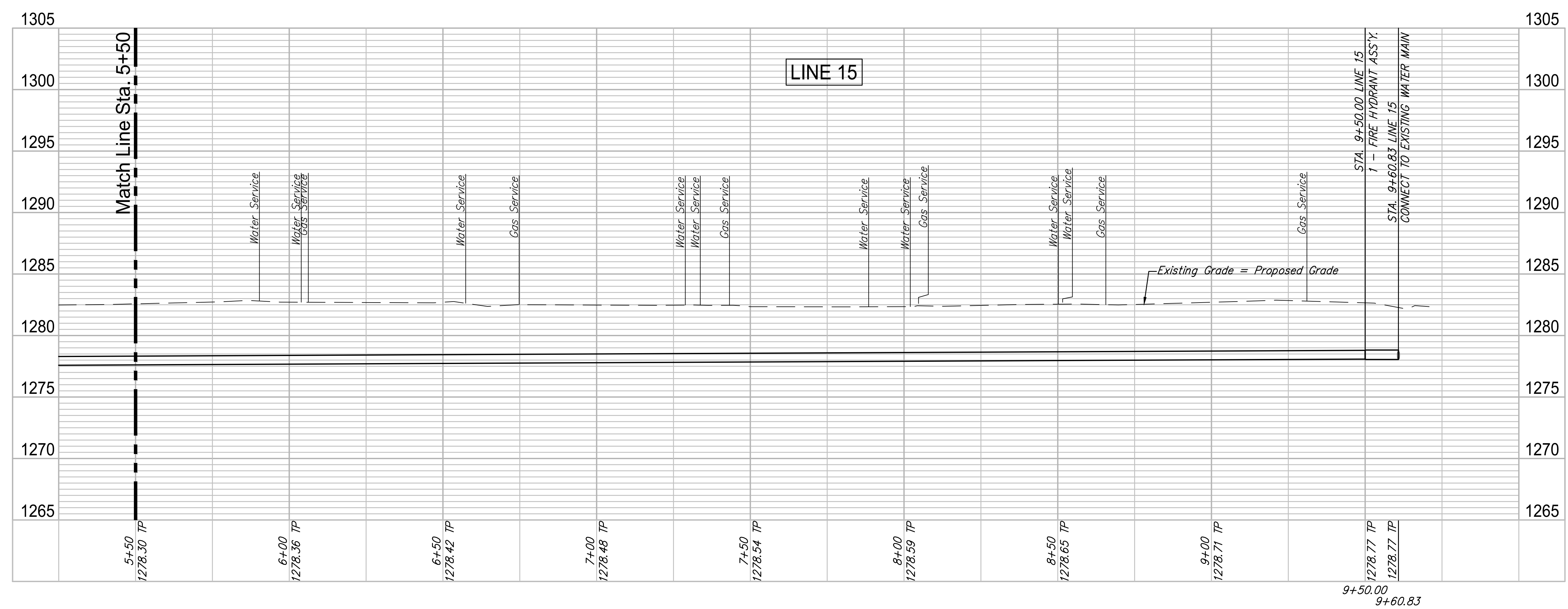
Existing Pavement, Curb and Gutter to be Removed and Replaced as necessary for construction. No additional pay shall be made for this work. *Subsidiary* to other pay items.

WATER METER SUMMARY

BL Station	Lt./Rt.	Service (Long or Short)	Address	As Built
7+10	Rt.	Short	1425 E. SALOME	
7+24	Lt.	Long	1426 E. SALOME	
7+79	Rt.	Short	1501 E. SALOME	
7+79	Lt.	Long	1502 E. SALOME	
8+49	Lt.	Long	1508 E. SALOME	

WATER METER SUMMARY

BL Station	Lt./Rt.	Service (Long or Short)	Address	As Built
8+53	Rt.	Short	1507 E. SALOME	
9+08	Lt.	Long	1514 E. SALOME	
9+22	Rt.	Short	1515 E. SALOME	
9+70	Rt.	Short	1521 E. SALOME	
9+71	Lt.	Long	1520 E. SALOME	



ROSE MARIE WATER - Part A
SALOME - LINE 15 (2 of 2)
Wichita, Kansas

PROJECT NUMBER: 448-30721
DRAWING FILE: LINE 15 - Salome

DESIGN: CMB / RA
DRAWN: DRS / RA

REVIEW: 12-7-16
DATE: 4/20/18

GARVER JOB: 4701W
SHEET: 46 OF 57

© Copyright 2018, Garver

F:\Projects\Projects 4700-4799\4701W (Rose Marie waterline replacement)\LINE 15 - Salome.dwg