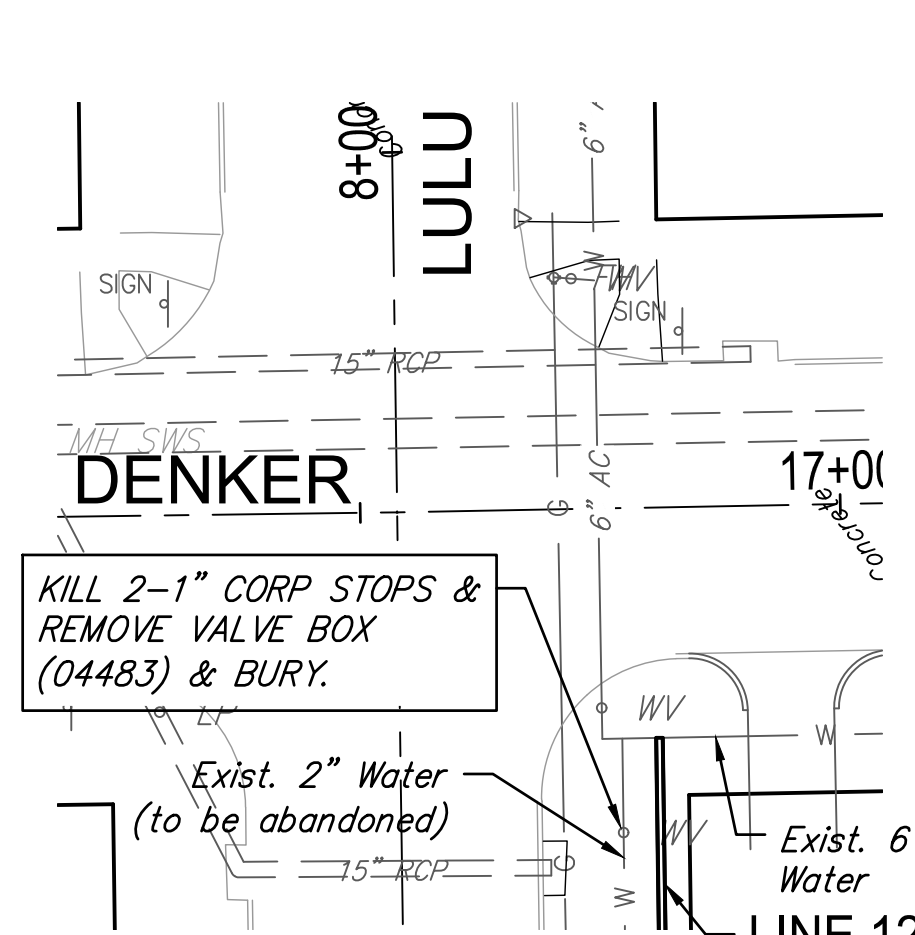
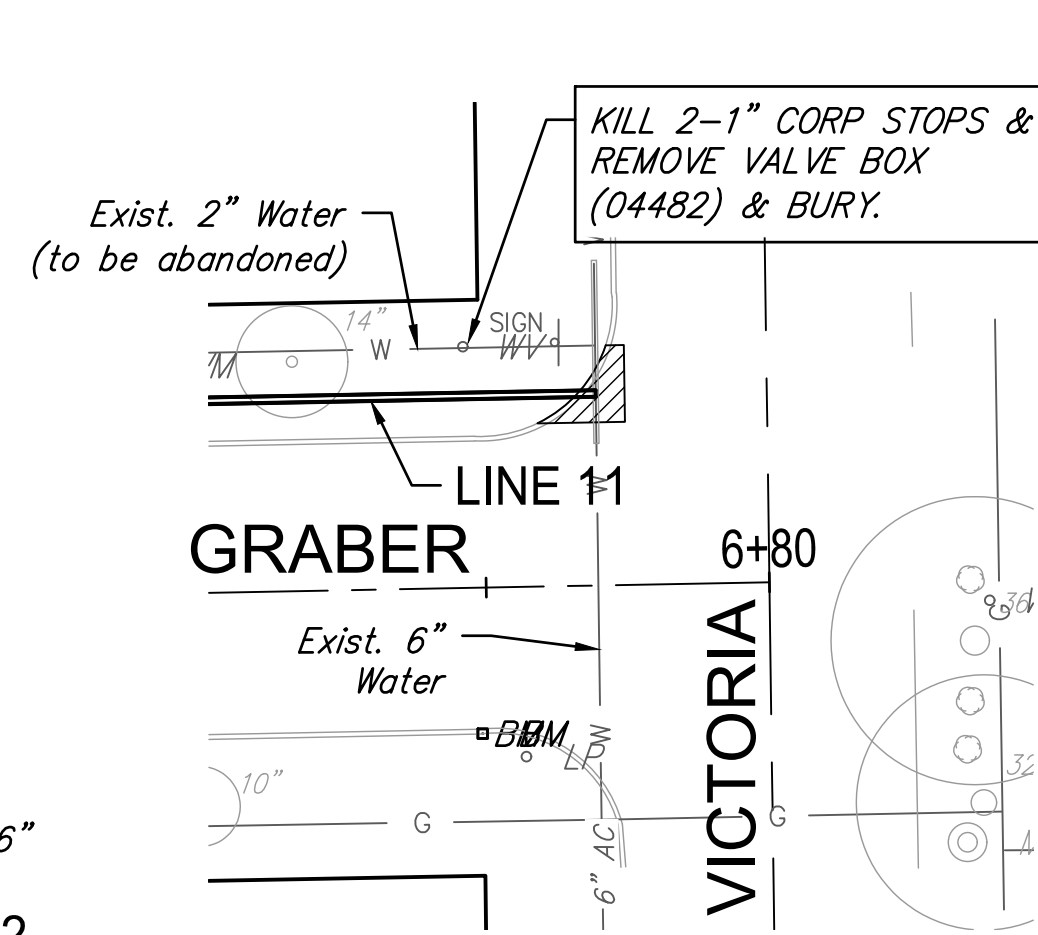


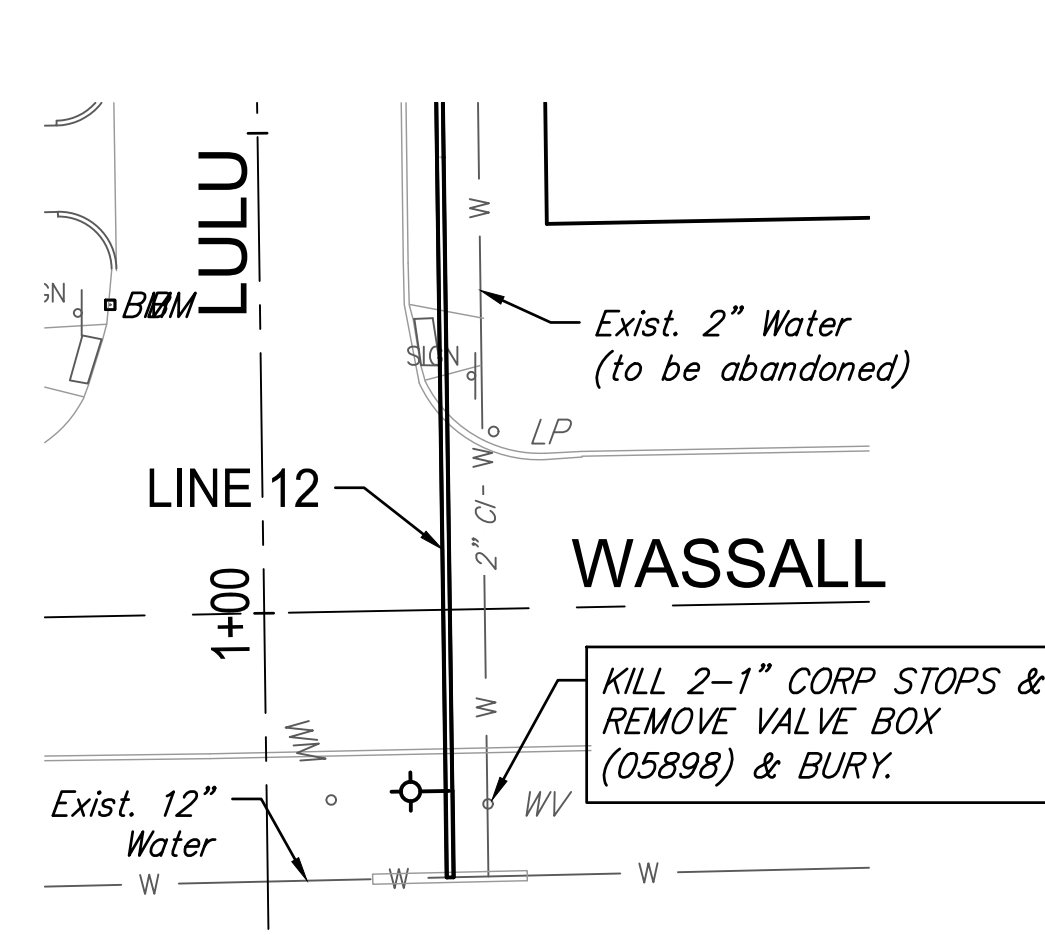
DENKER & PATTIE
DISCONNECT #18



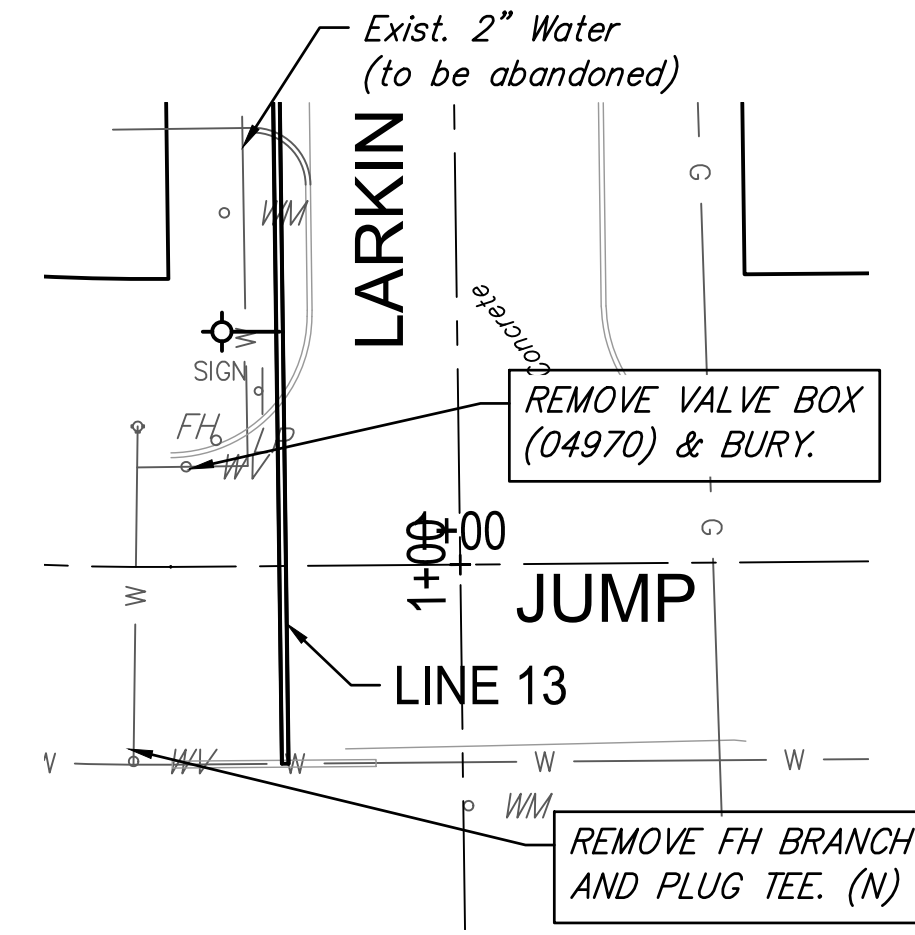
DENKER & LULU
DISCONNECT #19



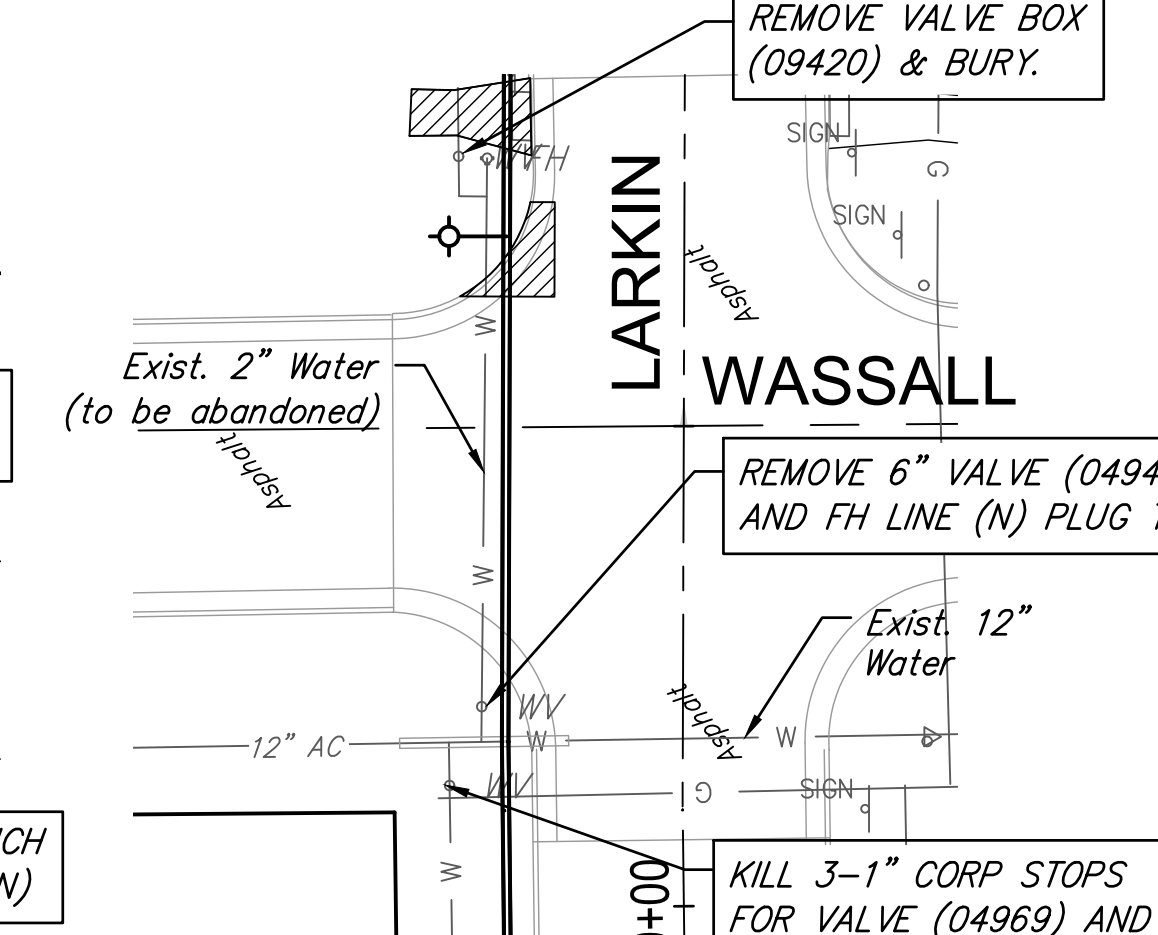
GRABER & VICTORIA
DISCONNECT #21



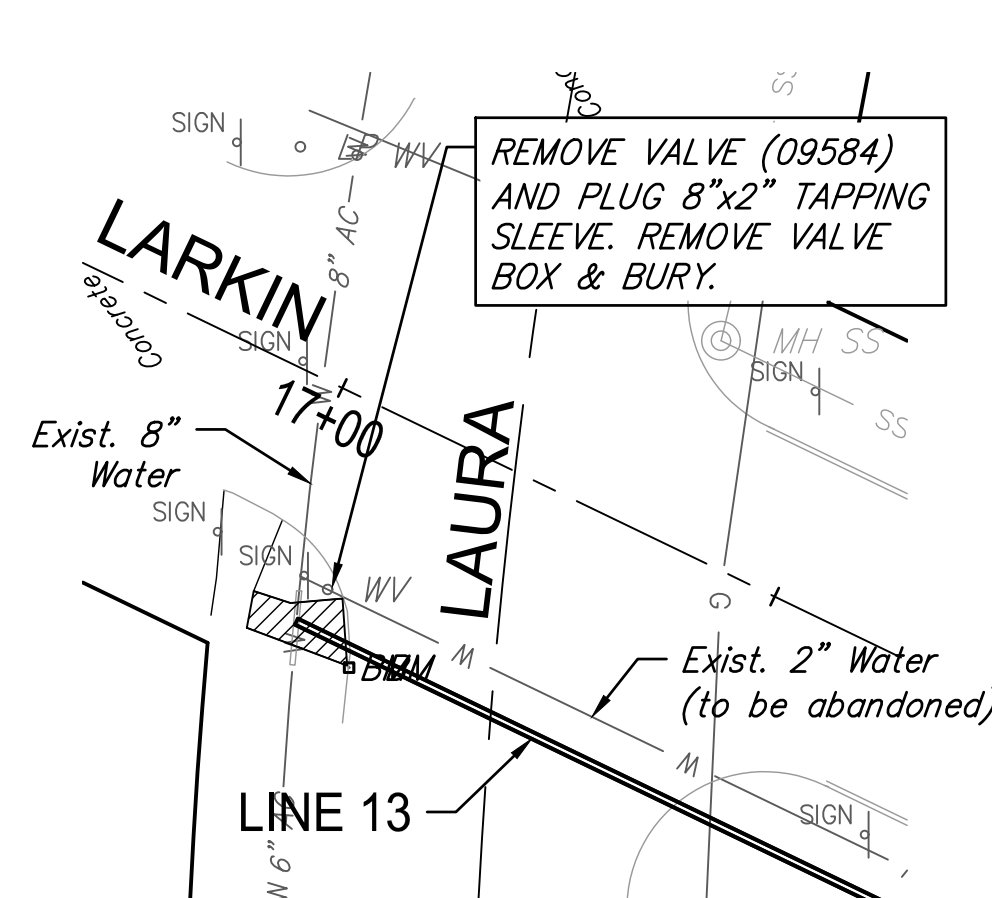
WASSALL & LULU
DISCONNECT #22



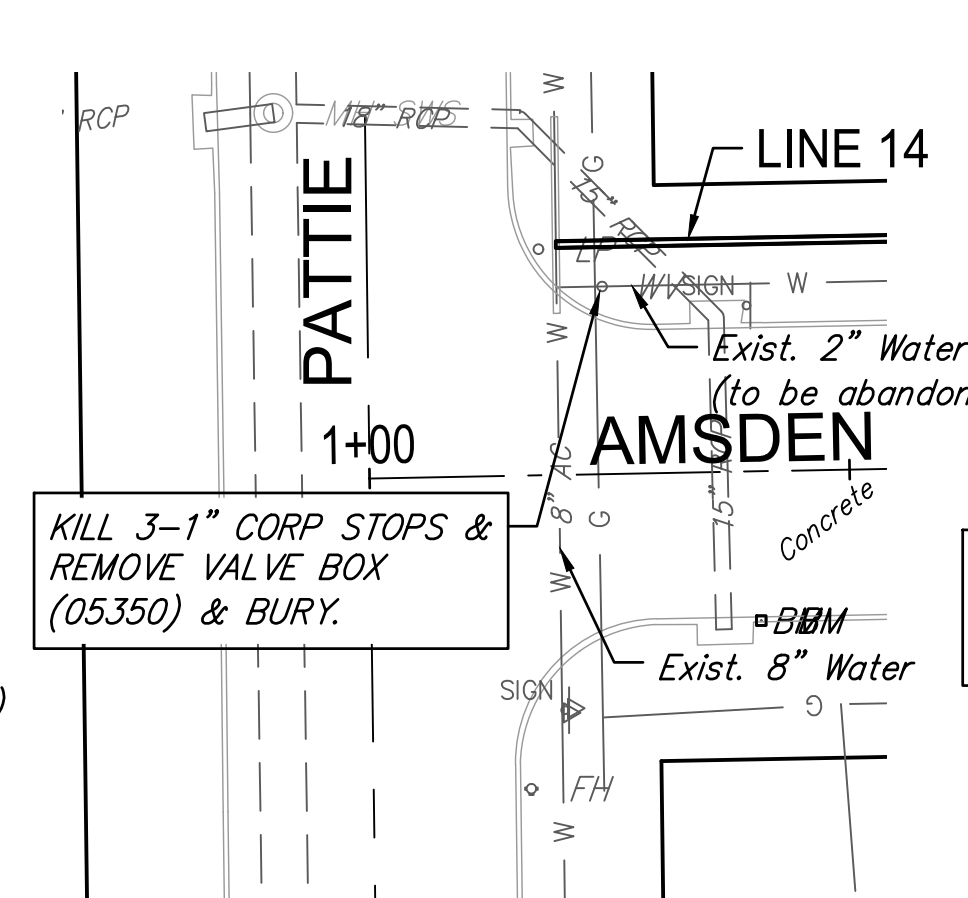
JUMP & LARKIN
DISCONNECT #23



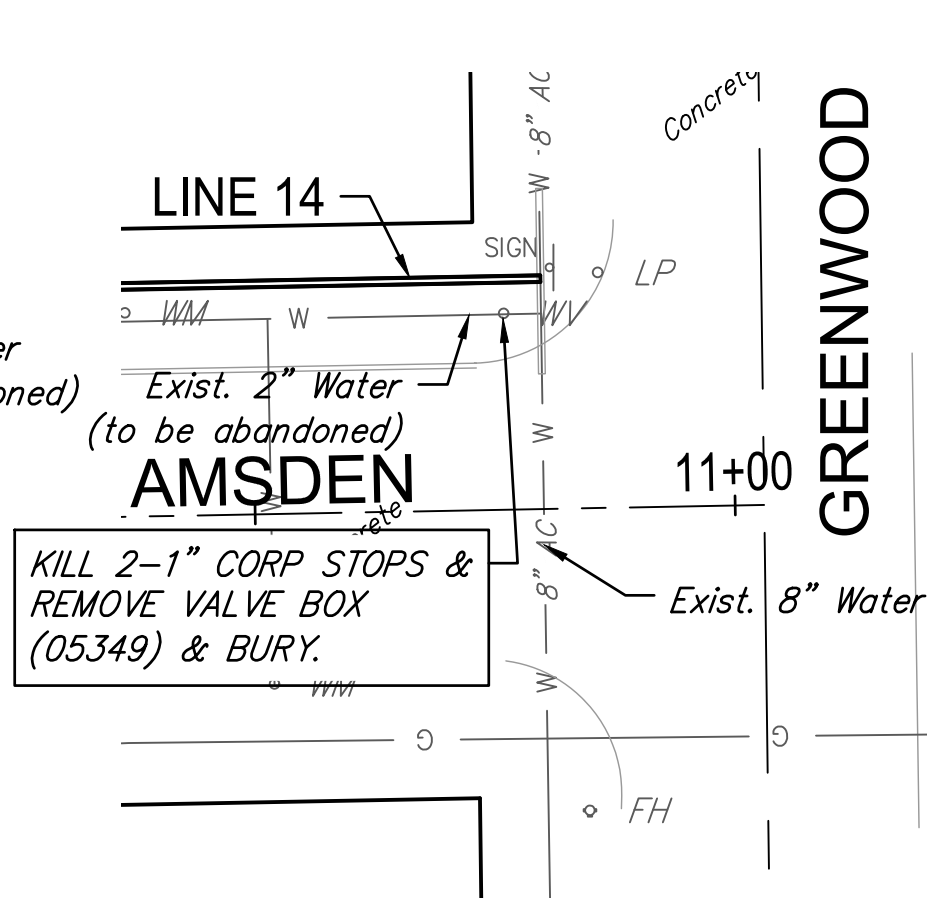
WASSALL & LARKIN
DISCONNECT #24



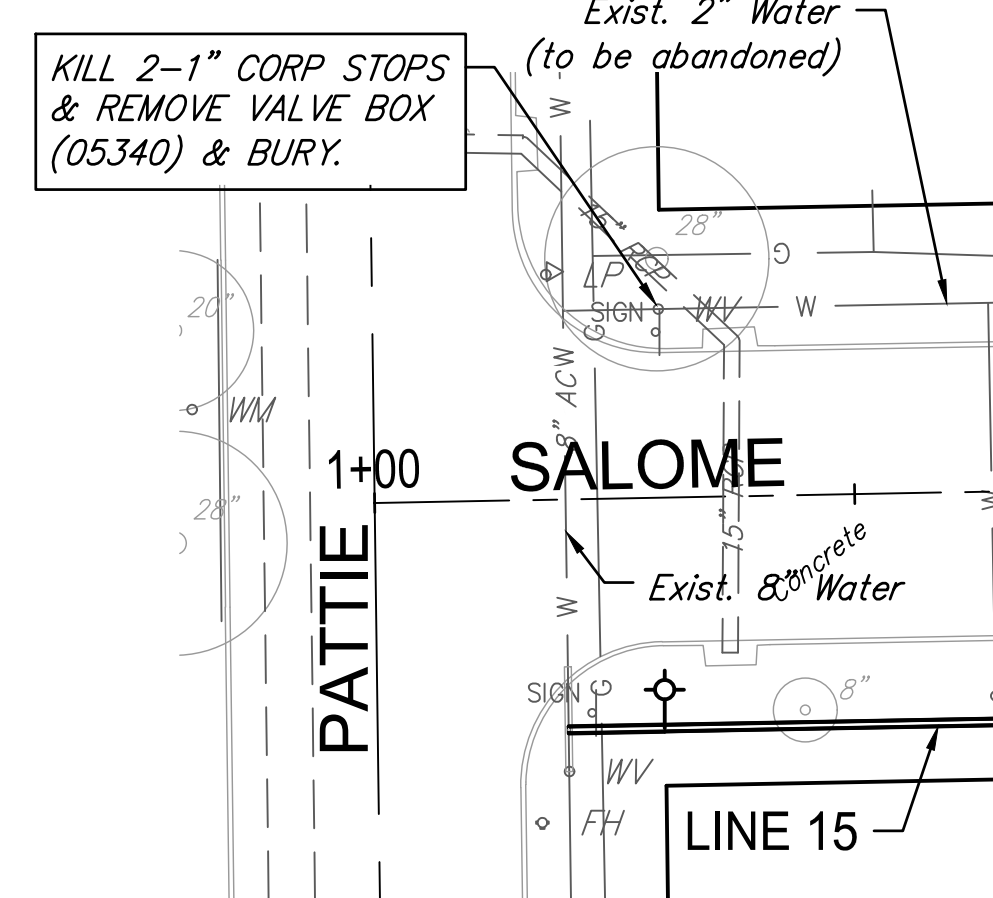
LARKIN & LAURA
DISCONNECT #25



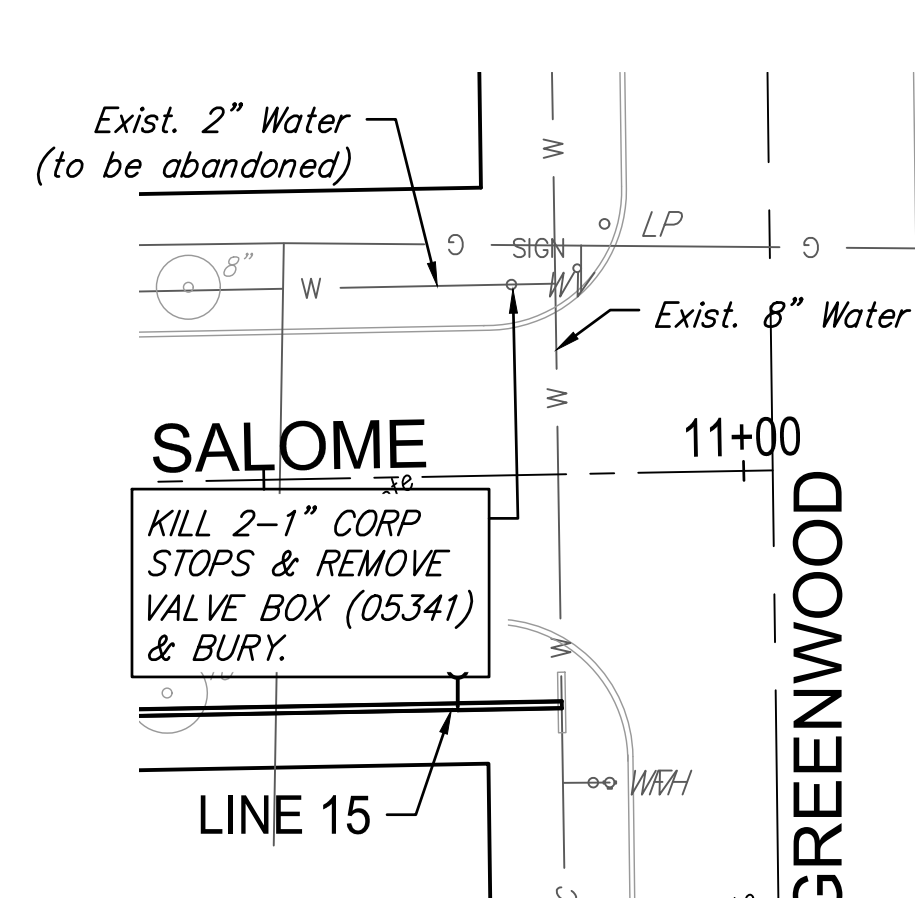
AMSDEN & PATTIE
DISCONNECT #26



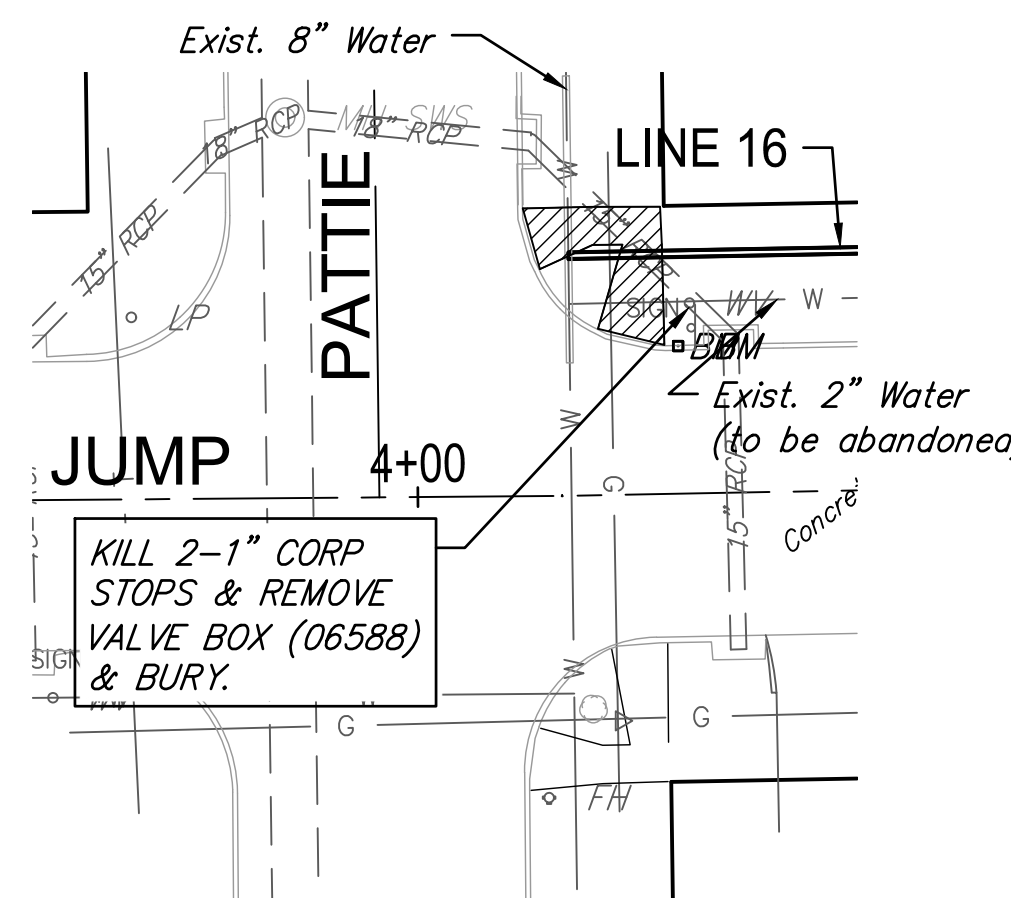
AMSDEN & GREENWOOD
DISCONNECT #27



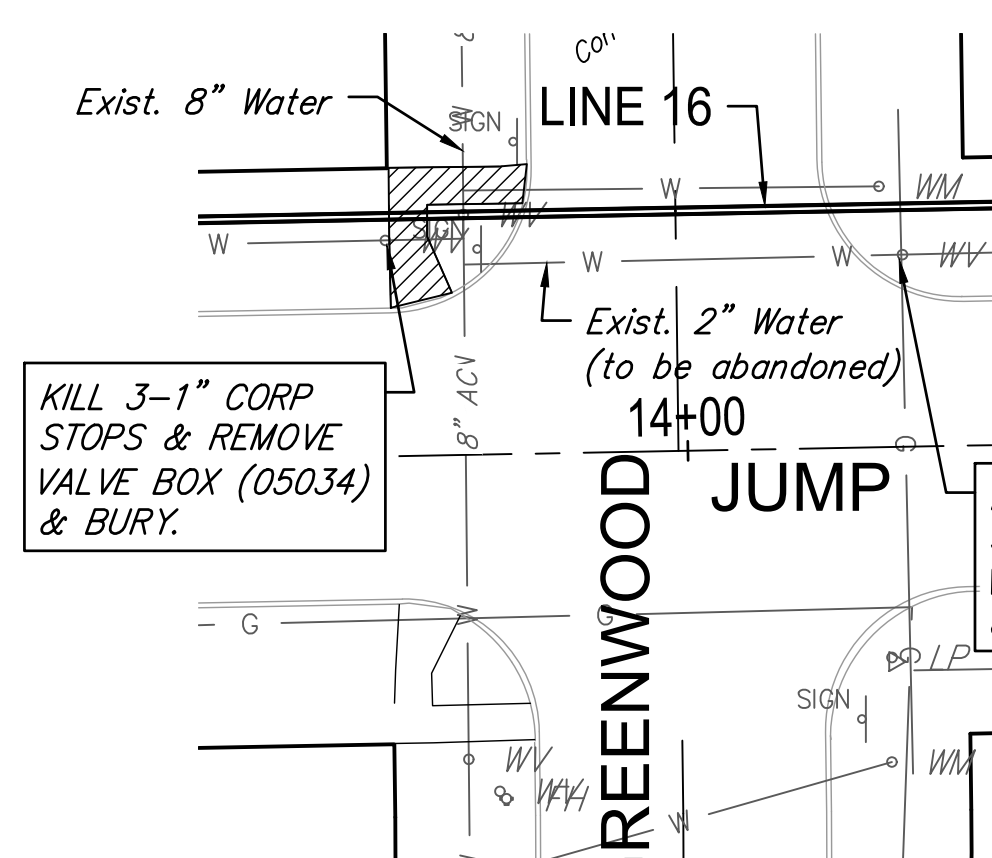
SALOME & PATTIE
DISCONNECT #28



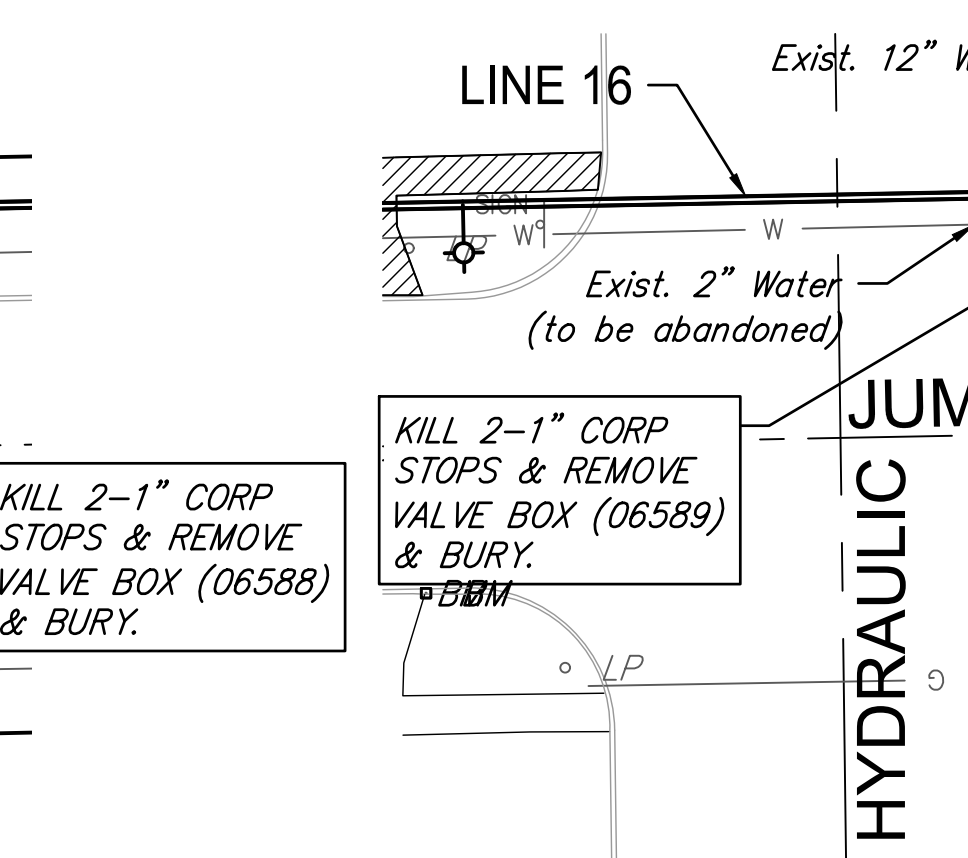
SALOME & GREENWOOD
DISCONNECT #29



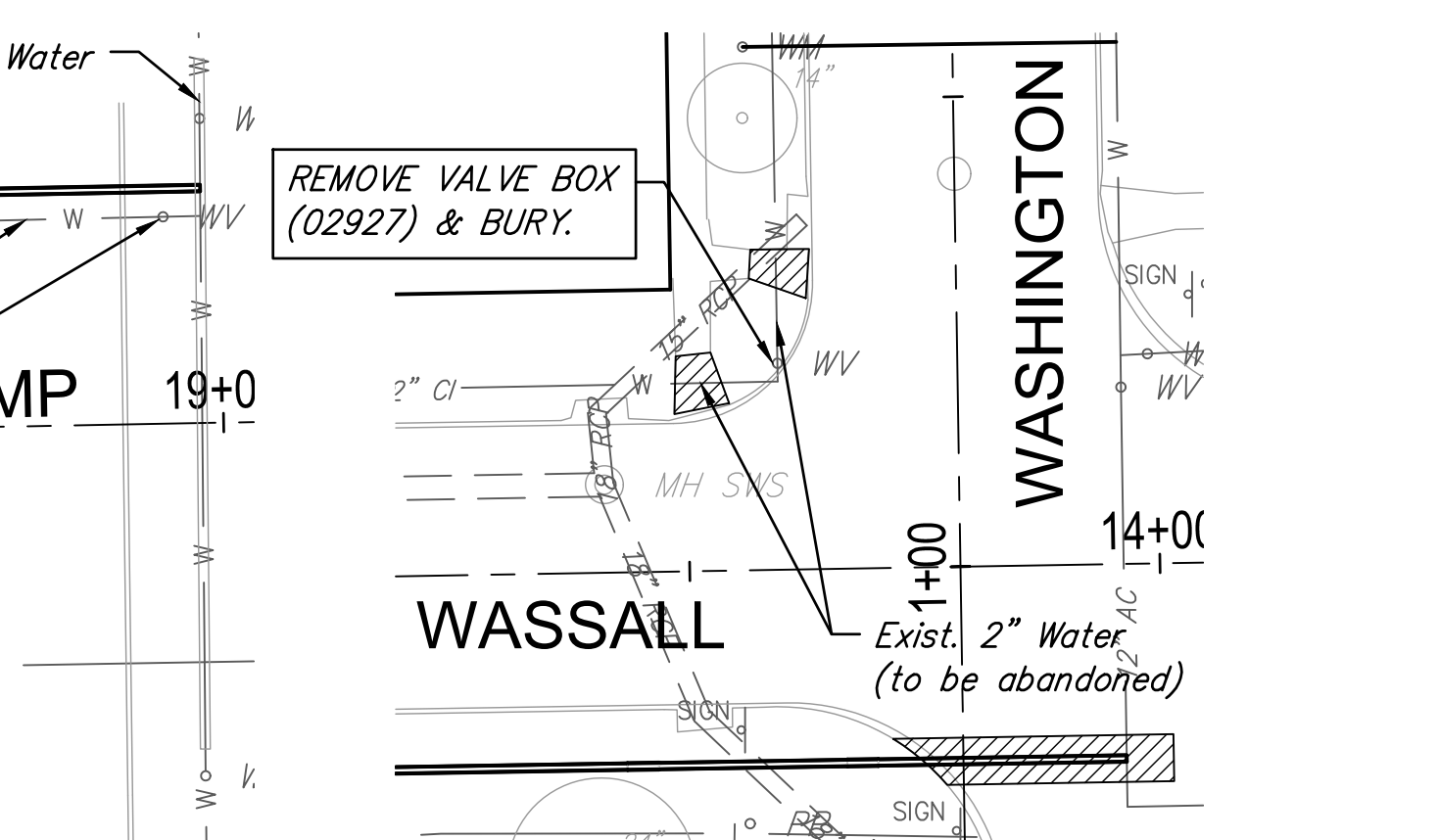
JUMP & PATTIE
DISCONNECT #30



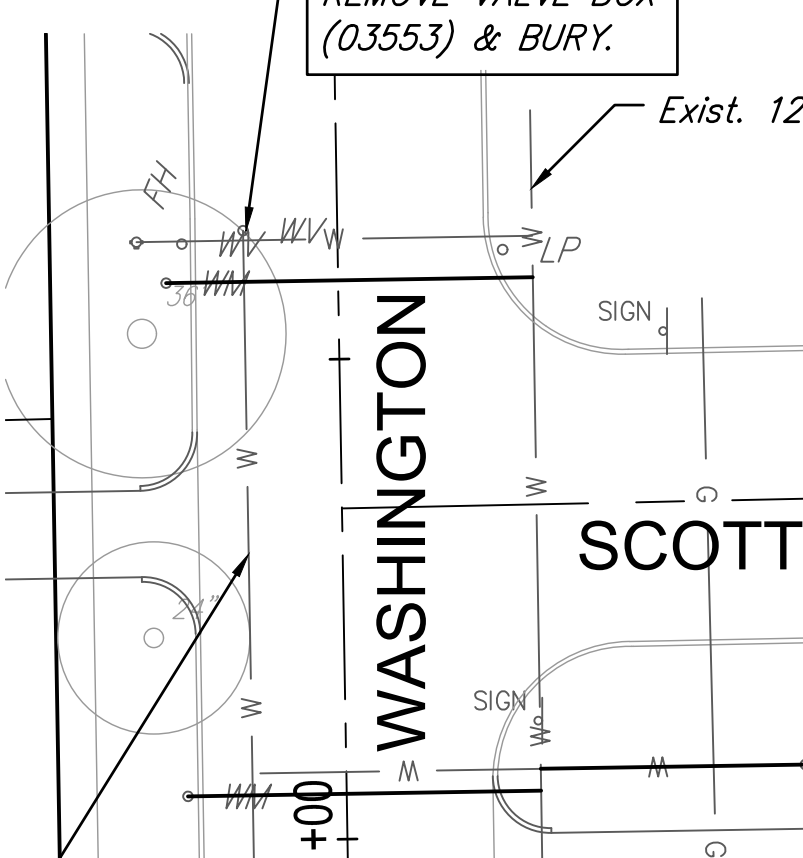
JUMP & GREENWOOD
DISCONNECT #31



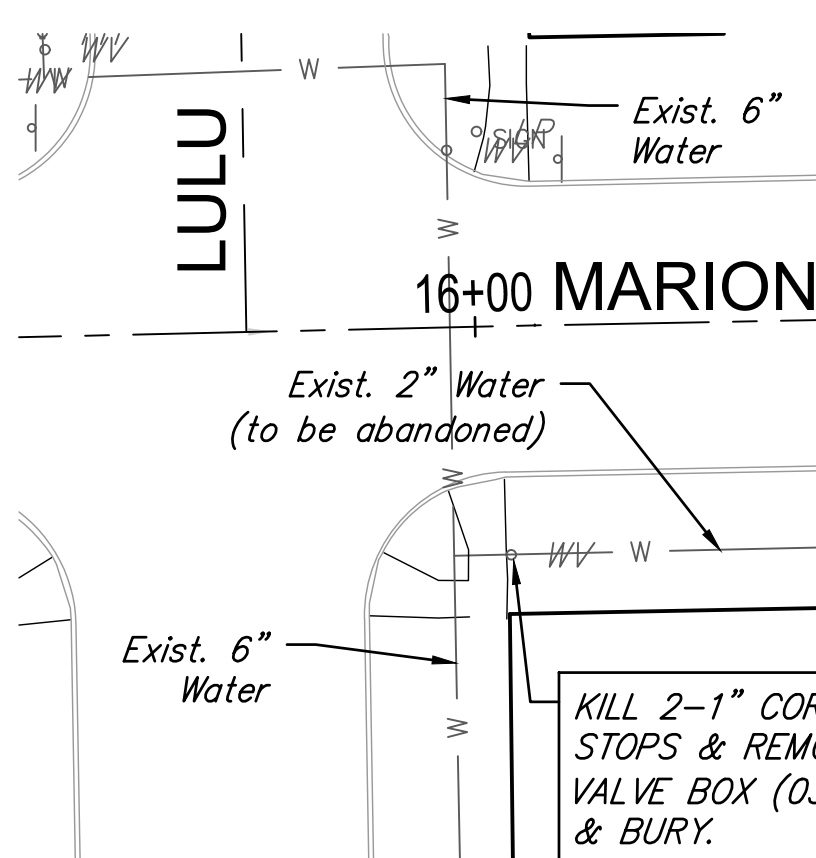
JUMP & HYDRAULIC
DISCONNECT #32



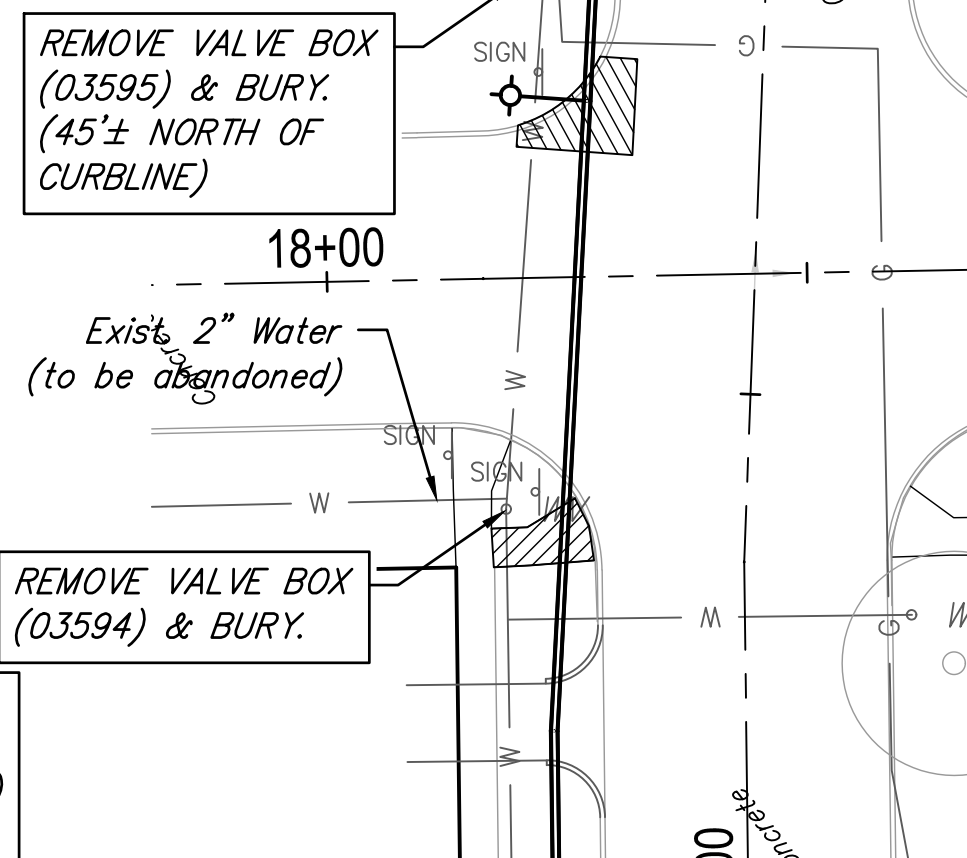
WASSALL & WASHINGTON
DISCONNECT #33



SCOTT & WASHINGTON
DISCONNECT #34

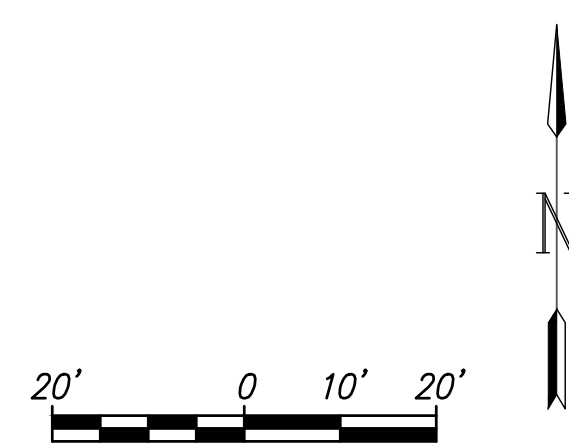


MARION & LULU
DISCONNECT #35



MARION & ELLIS
DISCONNECT #36

F:\Projects\Projects 4700-4799\4701W (Rose Marie waterline replacement)\4701W Disconnects Part A.dwg



Existing Pavement, Curb and Gutter to be Removed and Replaced as necessary for construction. No additional pay shall be made for this work, Subsidiary to other pay items.

ROSE MARIE WATER - Part A		Part A Water Line Disconnects 2	
	GARVER 924 N. MAIN WICHITA, KS 67203 316-264-8008 WWW.GARVERUSA.COM		DATE 4/2/2018
	PROJECT NUMBER 448-90721		DESIGN CMB / RA
GARVER JOB NO. 4701W		DRAWN DRS / RA	REVIEW 12-7-16
DWG. SCALE ...		SHEET 52	
DRAWING FILE 4701W Disconnects Part A [Part A Water Line Disconnects 2]		OF 57	