

SEE DISCONNECT #1, SHEET NO. 51

SEE DISCONNECT #2, SHEET NO. 51

Existing Pavement, Curb and Gutter to be Removed and Replaced as necessary for construction. No additional pay shall be made for this work, Subsidiary to other pay items.

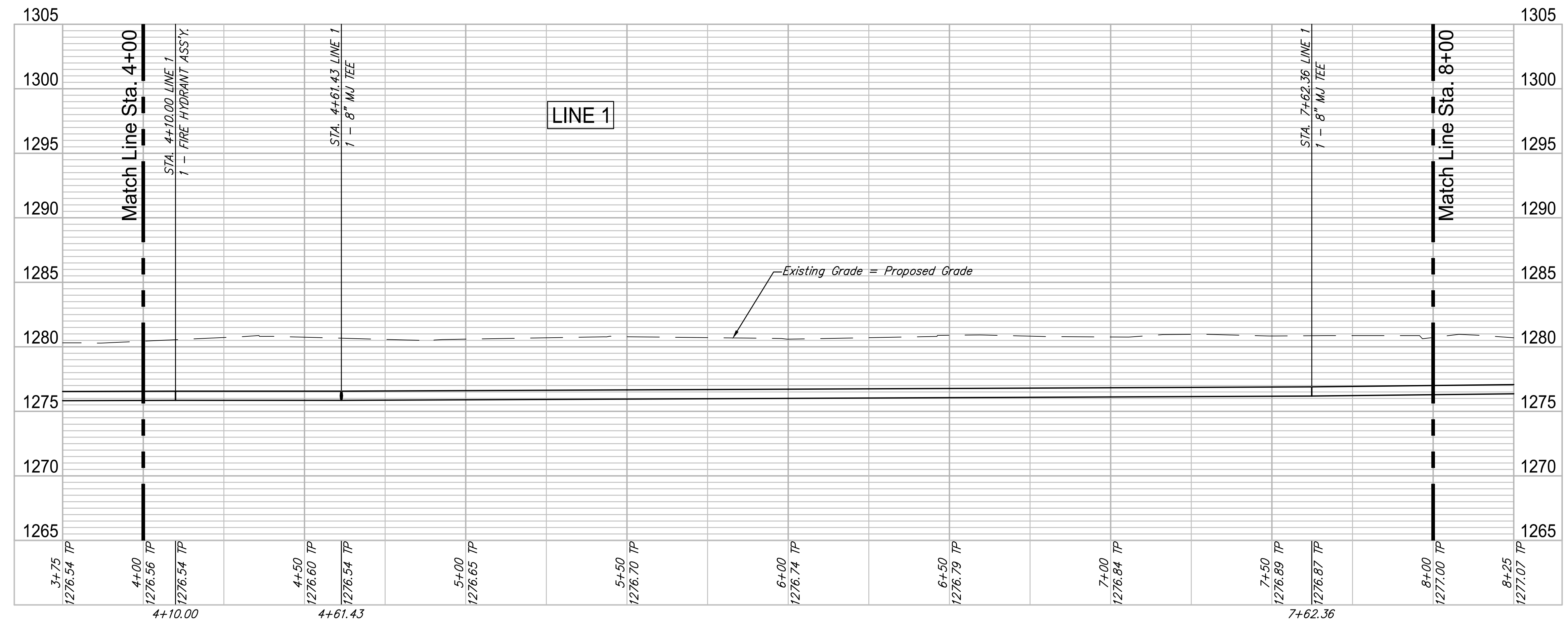
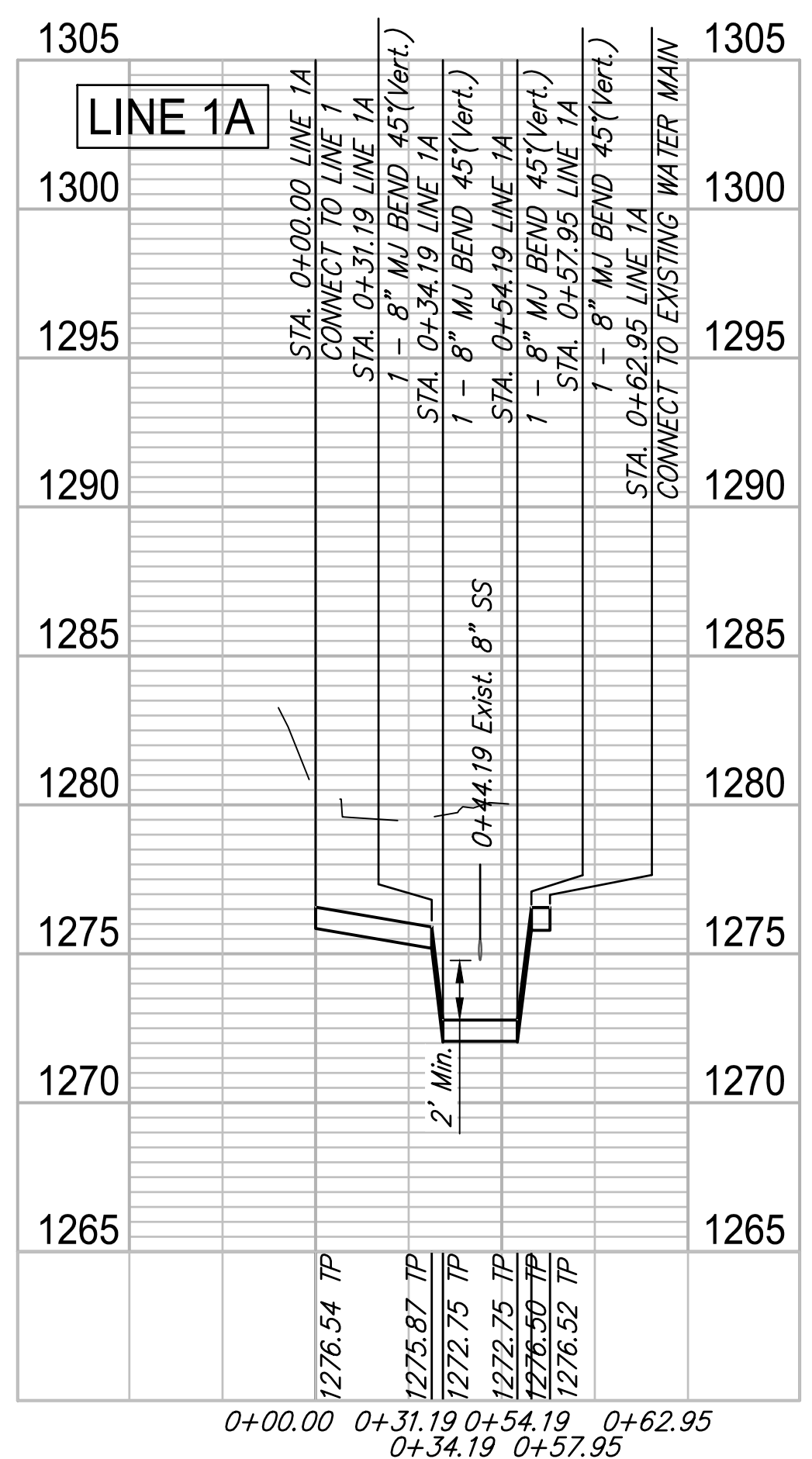
WATER METER SUMMARY				
BL Station	Lt./Rt.	Service (Long or Short)	Address	As Built
6+61	Rt.	Long	2852 S. GREENWAY	
8+64	Rt.	Long	2838 S. SANTA FE	

2838 S. Santa Fe tap will be moved to Sta. 1+48 Santa Fe. See Sheet No. 13

2852 S GREENWAY HOOD, MICHAEL D & CAROLYN S

2838 S SANTA FE FOX TURNER, BILLY K & CELIA A

Replat of Lot 23, Block 2, Schrader Bros. 4th Addition



ROSE MARIE WATER - Part A
GREENWAY - LINE 1 (2-3)
 Wichita, Kansas

PROJECT NUMBER: 448-30721
 DRAWING FILE: LINE 1 - Greenway 1-2

DESIGN: CMB / RA
 DRAWN: DRS / RA

REVIEW: 12-7-16
 DATE: 4/2/2018

GARVER JOB # 4701W
 SHEET # 8 OF 57

GARVER
 924 N. MAIN
 WICHITA, KS 67203
 316.264.8800
 WWW.GARVERUSA.COM

F:\Projects\Projects 4700-4799\4701W (Rose Marie waterline replacement)\LINE 1 - Greenway 1-2.dwg