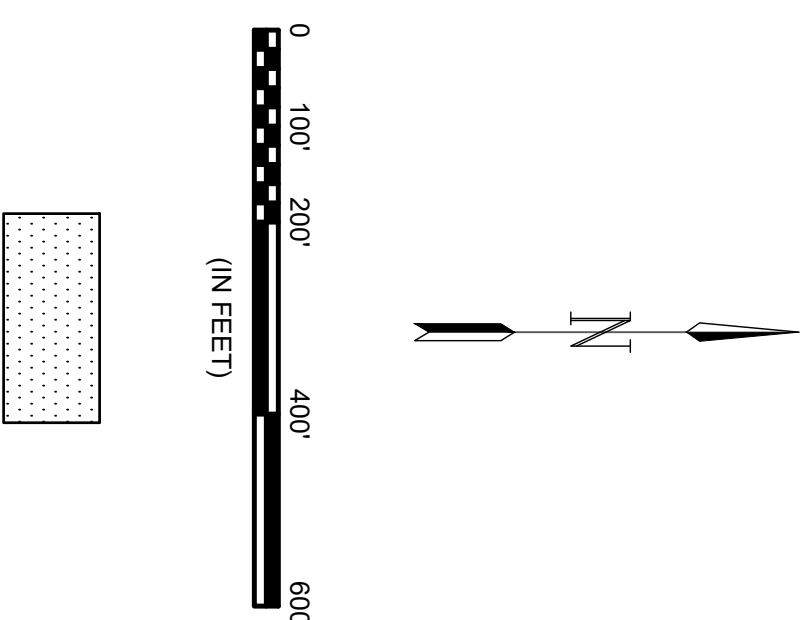


GENERAL NOTES:

- The Contractor shall comply with all applicable safety regulations. All construction shall be completed following current City Standard Specifications and Special Provisions.
- Contractor will be required to provide notice to utility companies a minimum of seventy-two (72) hours prior to any excavation, as follows:
 Kansas One-Call 687-2470
 The Contractor must notify the following in case of an emergency:
 AT&T 1-800-246-9464
 Black Hills Energy 1-800-694-8889
 City of Wichita Water & Sewer Dept 1-316-219-8921
 City of Wichita Stormwater 1-316-268-4090
 City of Wichita Traffic 1-316-268-4034
 Cox Communications 1-888-246-3530
 Kansas Gas Service 1-888-482-4350
 Westar Energy 1-800-544-4657
- Utility service lines, poles, etc. are to be adjusted as necessary by others prior to construction unless the plans specifically call for their adjustment by the Contractor or unless the plans specifically identify a utility to be adjusted by its owner during construction. Existing utilities and their location, as shown on the plans, represent the best information obtainable for design. The Contractor will be required to work around existing utilities within the Right-of-Way which do not conflict with proposed construction.
- Rubble from the removal of miscellaneous structures and excess excavation which is to be wasted shall be disposed of on sites to be provided by the Contractor. These sites shall be approved by the Engineer as to suitability, appearance and site location. Locations, in the opinion of the Engineer, that will leave an unsightly appearance will not be approved. All disposal sites must be approved by the Kansas Department of Health and Environment. Material either stockpiled or disposed of in a flood plain would require a Kansas State Board of Agriculture permit. Any material dumped in waters of the United States or wetlands is subject to U.S. Corps. of Engineers permitting regulations. Any material buried or stockpiled beyond approved construction limits would require additional archaeological investigations unless buried in a previously approved borrow location.
- Trees and shrubs in public Right-of-Way which are in direct conflict with proposed new construction shall be removed by the Contractor with the Engineer's approval. Trees and shrubs which are not in direct conflict with proposed new construction shall be saved and protected from damage.
- The Contractor shall give all property owners and/or tenants of developed property adjoining the construction of this project a minimum of ten (10) days notice prior to start of construction.
- The Contractor shall be responsible for preserving property irons. The Contractor will be required to re-establish any property irons which are damaged or destroyed by his construction operations. Such irons shall be re-established by a licensed land surveyor in accordance with state laws.
- The Water Distribution Division shall locate water valves one time during construction when requested by the Contractor. It shall be the Contractor's responsibility to preserve such field locations during the construction process. Water valves, valve boxes or the hydrants damaged during construction shall be repaired by the Contractor at his own expense. Valve boxes and water meters within the project limits shall be adjusted to match field grades. +
- If traffic is impacted by construction, a traffic control plan must be submitted and approved by the City Traffic Engineer, Brian Coon at traffic@wichita.gov before construction can begin. The Contractor shall be responsible for all traffic control measures to facilitate construction. All construction zone markings and signage shall conform to the latest version of the Manual on Uniform Traffic Control Devices (MUTCD) as published by the US Dept. of Transportation, Federal Highway Administration. All costs associated with construction markings and signage shall be the Contractor's responsibility.
- All elevations shown are NAVD88 G124.
- All areas disturbed during construction that will not be under proposed pavement shall be restored to match existing conditions.
- All existing pavement and curb and gutter within the construction limits shall be saw cut, full depth, to the lines shown on the plans, or to the nearest joint, and removed, unless otherwise noted. If removal limits are within three feet of a joint, remove to the joint.
- All traffic control devices in the work zone (including markings and signs) and their installation and maintenance shall comply with the latest edition of the Manual on Uniform Traffic Control Devices (MUTCD). All traffic control devices in the traveled way or clear zone shall be crashworthy (NCHRP Report 350 or MASH compliant).
http://safety.fhwa.dot.gov/roadway_dept/policy_guidelines/handwarekwz/
- All construction equipment, including vehicles, materials, and debris, shall be stored outside of the clear zone. Where this cannot be achieved the contractor shall place appropriate signs, adged identifiers, and/or barricades in compliance with the MUTCD.
- Except when required for safety, traffic control shall not block any lanes or sidewalks when work is not being performed.
- No shrink or swell factors have been applied to the earthwork quantities shown on this project. All earthwork quantities are based on raw surface volume comparisons.
- Excess dirt generated from installation of underground utilities or grading activities is to remain on site and be stockpiled on Lots 27-37, Block 7, Contractor to ensure stockpiles are not placed in Zone A of FEMA flood plain.
- All Street Right-of-Way and Reserves shall be permanently seeded, all other areas may be temporarily seeded. All seeding per City of Wichita Specifications.

EARTHWORK QUANTITIES	
Description	Cu. Yds.
Cut	15,400
Fill	12,300
Net Cut From Sanitary Sewer	2,800
Net (Cut)	(5,900)

IMPROVEMENT DISTRICT



Benchmarks

BENCHMARK: CHISELED SQUARE ON THE TOP OF CURB ON THE SOUTH END OF THE MEDIAN OF RONGSTONE, 55' N. OF THE CENTERLINE OF PAWNEE, SIERRA HILLS AND ADDITION.
 ELEVATION = 1320.03 (NAVD88 G124)

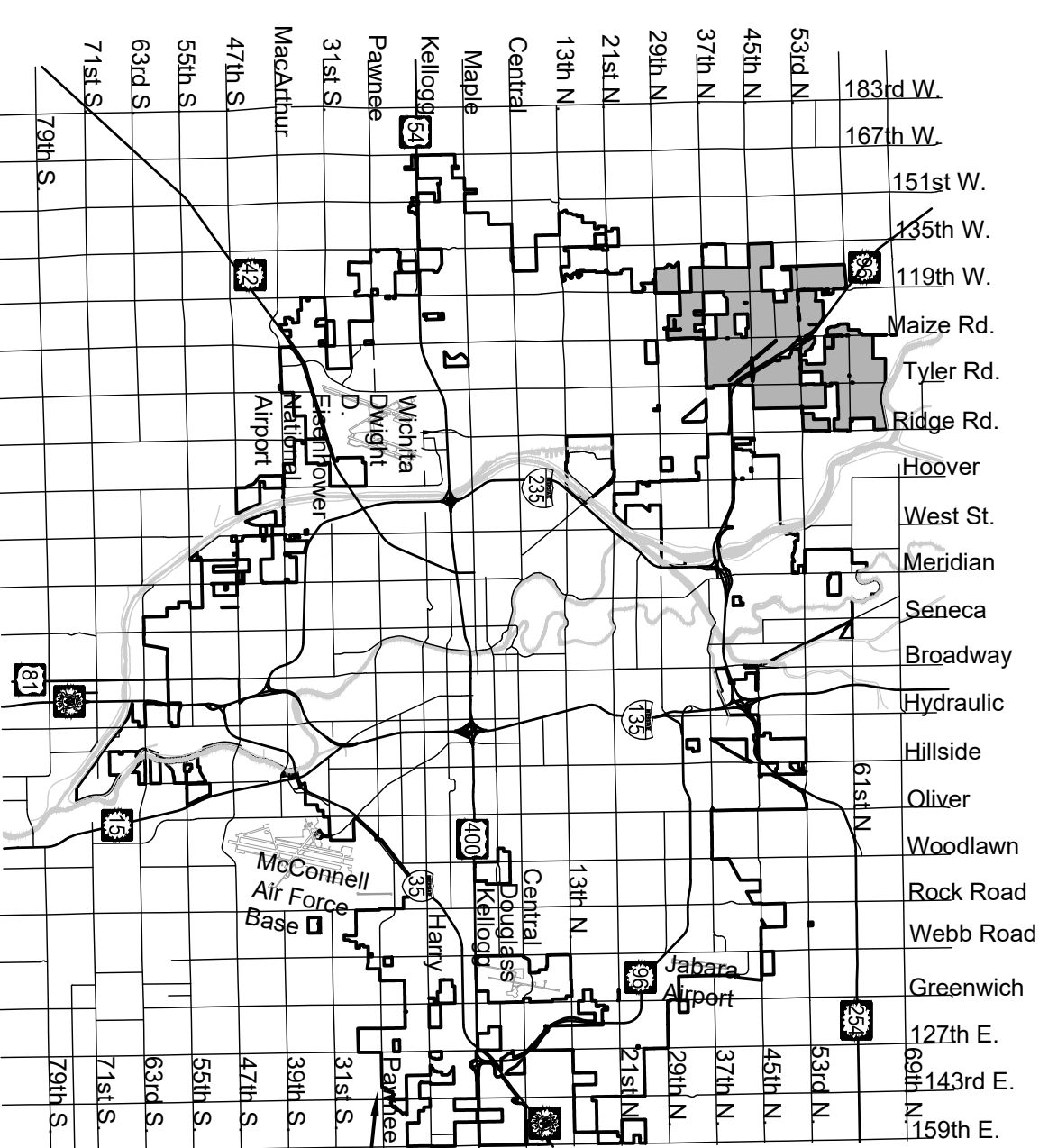
ONSITE BENCHMARK: S8B BRASS DISC 340' W. & 50' S. OF THE CENTERLINE INTERSECTION PAWNEE AVENUE & 143RD STREET EAST.
 ELEVATION = 1315.65 (NAVD88 G124)

PAVING IMPROVEMENTS

to serve

Clear Ridge Addition, Phase 1

Gary Janzen, P.E. City Engineer
 Project Number 472-85406
 O.C.A. NO. 766400



Vicinity Map

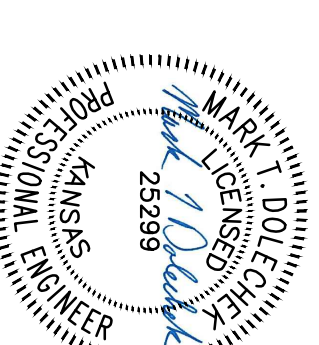
Sheet Index

Sheet	Title
1	Titleshheet
2	Curb & Gutter Details
3	Valley Gutter Details
4	Asphalt Paving Details
5	Sign Details
6	Wheelchair Ramp Details
7	Spring Hollow
8	Spring Hollow
9	Spring Hollow
10	Spring Hollow
11	Intersections
12	Pre-Cast SWS MH
13	MH Frame & Cover
14	Type 1A CB Inlet 5-10
15	Curb Inlet Pavement Underdrain
16	Backyard Inlet
17	Storm Sewer 1
18	Storm Sewer 2
19	Storm Sewer 3
20	Bubble Map
21	Four-Corner Grading
22	Grading Plan
23	Erosion Control Plan
24	Plat (1 of 2)
25	Plat (2 of 2)

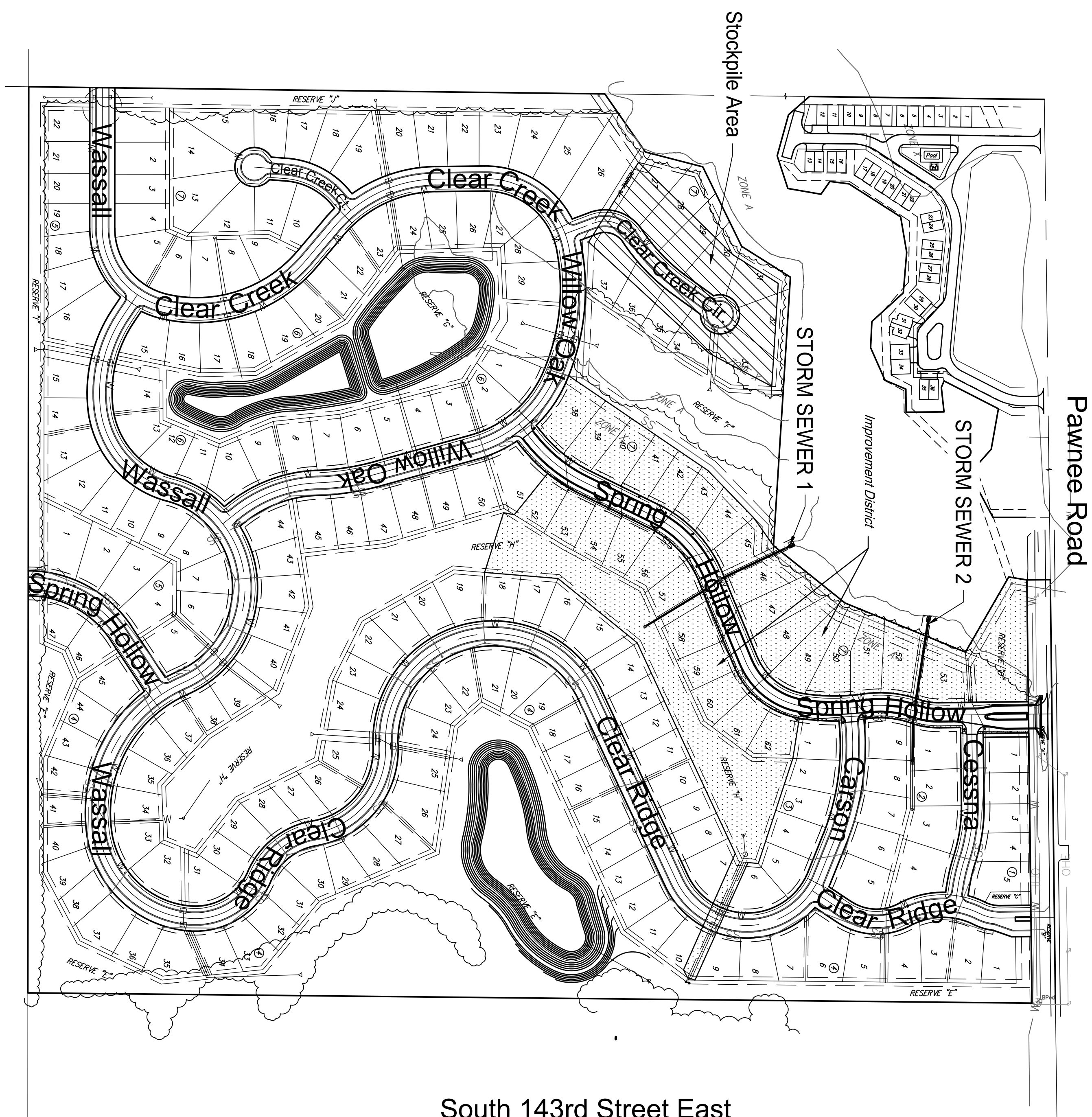
Erosion Control Details are available to download from the City of Wichita website.

October 2018

PLANS PREPARED BY



GARVER
 924 N. Main Street
 Wichita, KS 67203
 (316) 264-5008
www.GarverUSA.com



Digitally Signed 10/11/2018