

FIGURE 1: TYPICAL SIGNING FOR ROAD CLOSURE (MAINLINE OR SIDE ROAD)

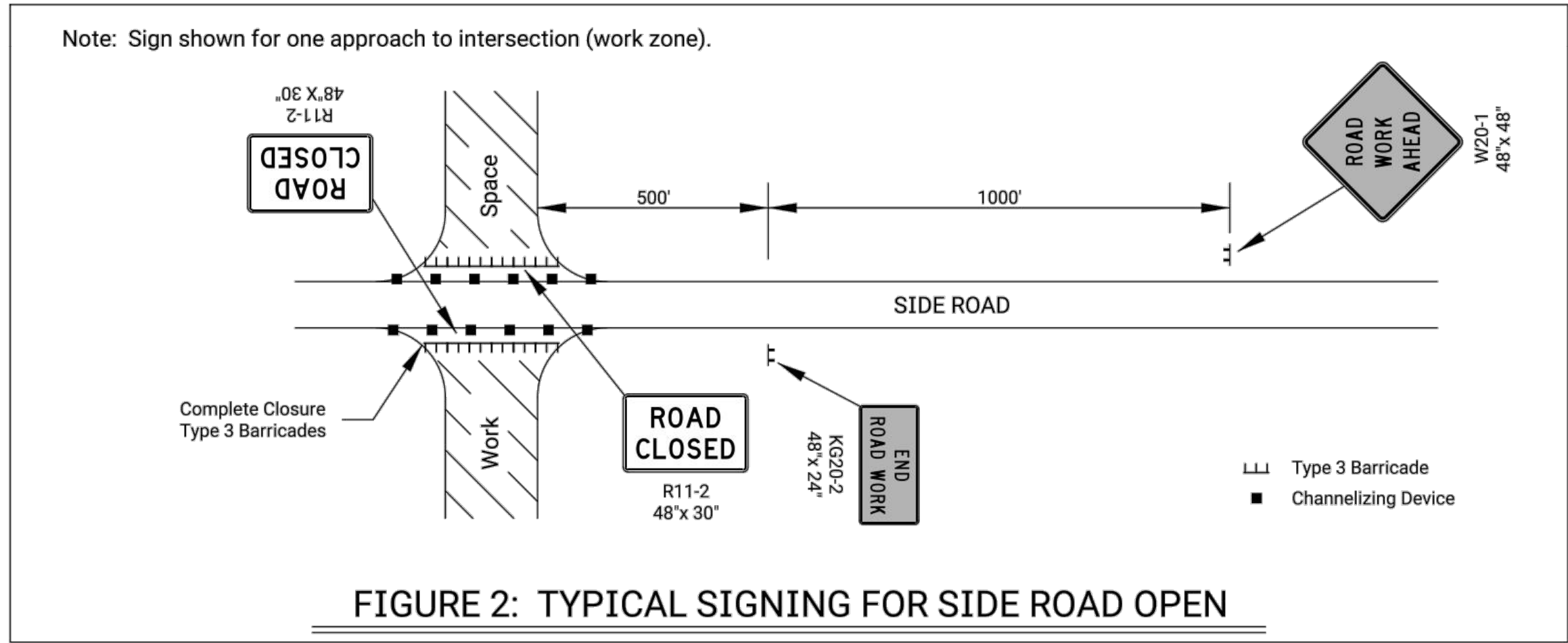


FIGURE 2: TYPICAL SIGNING FOR SIDE ROAD OPEN

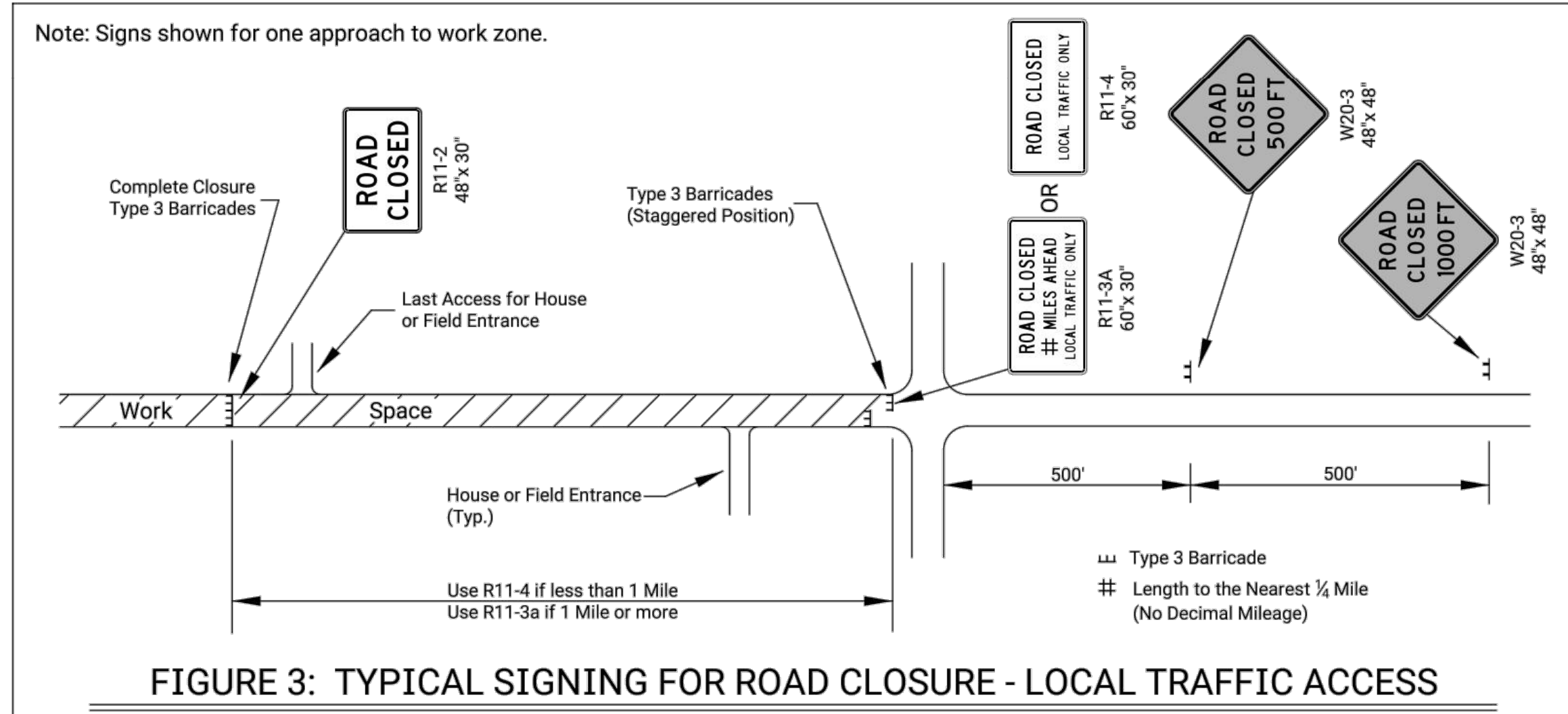


FIGURE 3: TYPICAL SIGNING FOR ROAD CLOSURE - LOCAL TRAFFIC ACCESS

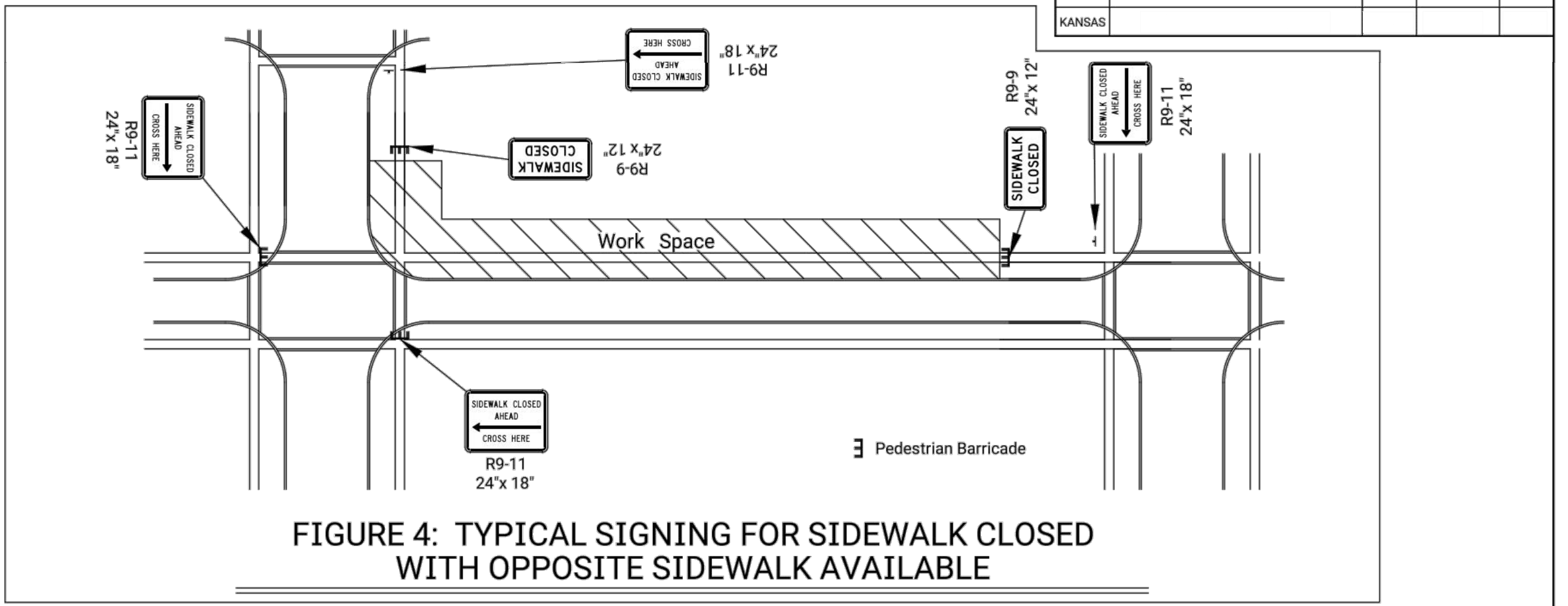
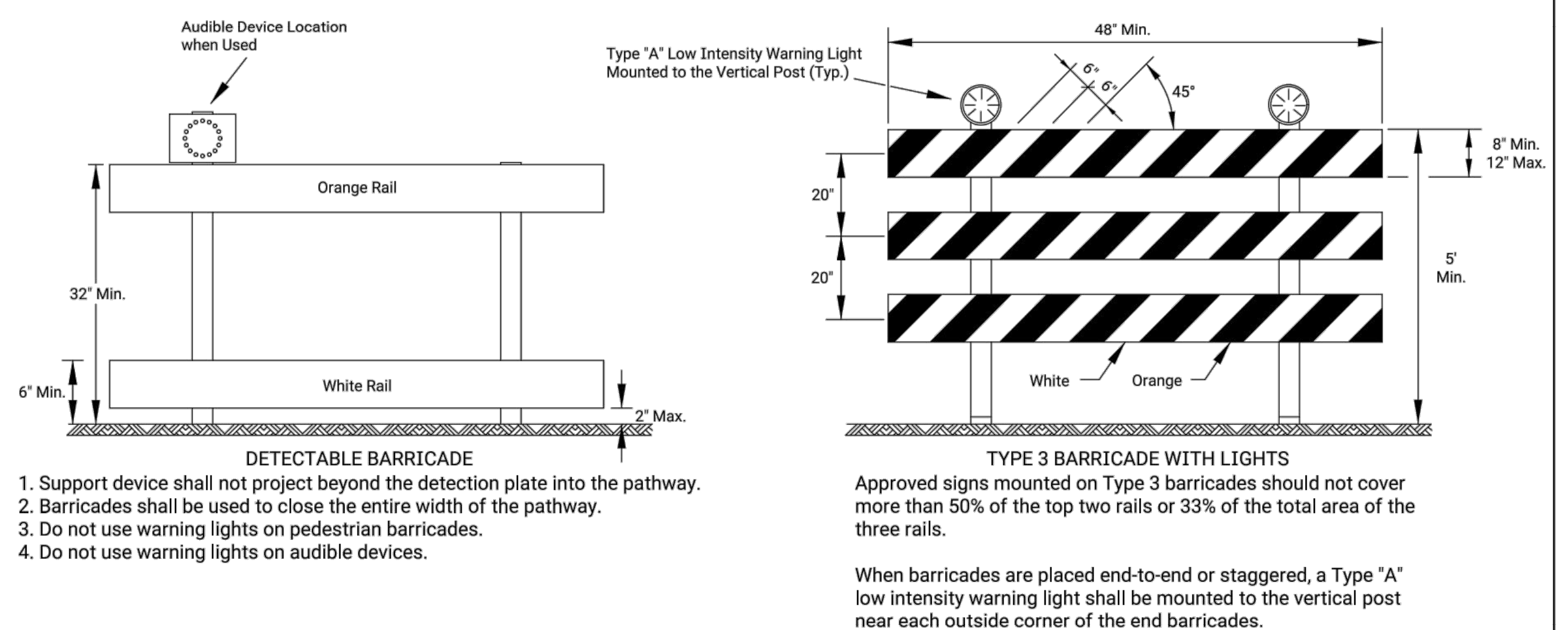


FIGURE 4: TYPICAL SIGNING FOR SIDEWALK CLOSED WITH OPPOSITE SIDEWALK AVAILABLE



ROAD CLOSED GENERAL NOTES

- As shown in Figure 1, at the point where thru traffic must detour and local traffic can proceed to the location where the roadway is completely closed, the R11-3a (ROAD CLOSED # MILES AHEAD LOCAL TRAFFIC ONLY) or R11-4 (ROAD CLOSED LOCAL TRAFFIC ONLY or ROAD CLOSED TO THRU TRAFFIC) sign shall be used with Type 3 barricades (winged position), placed on the shoulders of roadway.
- As shown in Figure 3, when local traffic must be allowed access into the work zone, Type 3 barricades shall be longitudinally staggered to maintain the appearance of a closed roadway. A second line of end-to-end Type 3 barricades shall be placed just beyond the last access point in the work zone, to completely close the roadway.
- The R11-4 (ROAD CLOSED TO THRU TRAFFIC or ROAD CLOSED LOCAL TRAFFIC ONLY) sign shall be used when the distance to the point of complete closure of the roadway is less than 1 mile.
- The R11-3a (ROAD CLOSED # MILES AHEAD LOCAL TRAFFIC ONLY) sign shall be used when the distance to the point of complete closure of the roadway is 1 mile or greater.
- The words "BRIDGE OUT" (or BRIDGE CLOSED) may be substituted for the words "ROAD CLOSED" on the R11-3a or R11-4 sign where applicable.

NO.	DATE	REVISIONS	BY	APPD
3				
2				
1				

KANSAS DEPARTMENT OF TRANSPORTATION

TRAFFIC CONTROL CLOSURES

TE704

DESIGNED: B.A.H. / DETAIL: R.W.B. / QUANTITIES: K.R.B. / TRACED: J.L.A. / DESIGN CK: DETAIL CK: QUAN. CK: TRACE CK:

KDOT Graphics Certified 03-29-2018

Plotted : 29-MAR-2018 12:40 Traffic  
 Drawn By : mshock  
 File : te704.dgn

DOUGLAS AVE. TRANSIT SHELTER RELOCATION WICHITA, KS

LKArchitecture  
 Architecture • Engineering • Planning • Interior Design • Landscape Architecture

LK Architecture Inc. ©  
 345 RIVERVIEW WICHITA, KS 67203  
 Phone (316) 268-0230 Fax: (316) 268-0205

CONTACT: Jeffery A. Best, ASLA  
 PROJECT NUMBER:

18484

SHEET TITLE:

TE 704 STANDARD

SHEET NUMBER:

C12