

# GENERAL NOTES:

- The Contractor shall comply with all applicable safety regulations. All construction shall be completed following current City Standard Specifications and Special Provisions.
- Contractor will be required to provide notice to utility companies a minimum of seventy-two (72) hours prior to any excavation, as follows:

Kansas One-Call 687-2470

The Contractor must notify the following in case of an emergency:

AT&T 1-800-246-8464  
 Black Hills Energy 1-800-694-8989  
 City of Wichita Water & Sewer 1-316-219-8921  
 City of Wichita Stormwater 1-316-268-4090  
 City of Wichita Traffic 1-316-268-4034  
 Cox Communications 1-888-249-3530  
 Kansas Gas Service 1-888-482-4950  
 Westar Energy 1-800-544-4857

- Utility service lines, poles, etc. are to be adjusted as necessary by others prior to construction unless the plans specifically call for their adjustment by the Contractor or unless the plans specifically identify a utility to be adjusted by its owner during construction. Existing utilities and their location, as shown on the plans, represent the best information obtainable for design. The Contractor will be required to work around existing utilities within the right-of-way which do not conflict with proposed construction.
- Rubble from the removal of miscellaneous structures and excess excavation which is to be wasted shall be disposed of on sites to be provided by the Contractor. These sites shall be approved by the Engineer as to suitability, appearance and site location. Locations, in the opinion of the Engineer, that will leave an unsightly appearance will not be approved. All disposal sites must be approved by the Kansas Department of Health and Environment. Material either stockpiled or disposed of in a flood plain will require a Kansas State Board of Agriculture permit. Any material dumped in waters of the United States or wetlands is subject to U.S. Corps. of Engineers permitting regulations. Any material buried or stockpiled beyond approved construction limits will require additional archaeological investigations unless buried in a previously approved borrow location.

- Trees and shrubs in public right-of-way which are in direct conflict with proposed new construction shall be removed by the Contractor with the City Engineer's approval. Trees and shrubs which are not in direct conflict with proposed new construction shall be saved and protected from damage.

- The Contractor shall give all property owners and/or tenants of developed property abutting the construction of this project a minimum of ten (10) days notice prior to start of construction.

- The Contractor shall be responsible for preserving property irons. The Contractor will be required to re-establish any property irons which are damaged or destroyed by his construction operations. Such irons shall be re-established by a licensed land surveyor in accordance with state laws.

- All elevations shown are NGVD29.

- All areas disturbed during construction that will not be under proposed pavement shall be restored to match existing conditions.

- A saw cut of at least one-half the depth of existing surface courses or one-fourth the depth of the existing total pavement thickness shall be provided at locations where proposed construction abuts the existing surface course or pavement for which partial removal of that surface or pavement is required. Sawed joint to facilitate removal within three (3) feet of existing joints will not be permitted and for such instances the limits of removal shall extend to the existing joint. Such saw cuts will not be paid for directly and this cost shall be considered as subsidiary to the removal of the surface or pavement.

- Limits of earthwork shall match existing ground elevations at the right-of-way line unless otherwise noted on the plans with a new finished grade elevation. When a new finished grade elevation is shown, the earthwork shall extend one foot beyond the right-of-way line and then slope up or down using permissible slopes to match the existing ground surface.

- The Contractor shall protect from damage and support existing utilities through construction as approved by the utility owner and the Engineer at the contractor's expense.

- All areas disturbed during easement grading in Res. "H" shall be seeded, mulched, and fertilized as follows (Permanent Seeding):

Seed: Kansas Premium Fescue Blend: 8 lbs./1000 sq. ft.  
 Mulch: Prairie Hay: 2 tons/acre  
 Fertilizer: 12-24-12: 45 lbs./acre

All costs associated with seeding, mulching, and fertilizing shall be included in bid item "Seeding". All seeding operations shall conform to City of Wichita Standard Specifications.

- All other areas disturbed during construction shall be seeded at 300 lbs./acre with Rye Grass immediately following construction in that area. Contractor shall prepare ground per City Specifications.

- All existing and proposed erosion control measures including silt fencing, erosion control mat, straw bales, inlet barriers, and const. entrance shall be maintained throughout construction by the contractor and until project is accepted by the City of Wichita. The on-site engineer shall complete weekly reports on the status of erosion control measures. The contractor shall be required to comply with maintenance and/or replacement of erosion control measures as determined by the on-site engineer until project is accepted by City of Wichita. Maintenance and/or replacement of erosion control measures to be paid by L.S. bid item "Maintain Existing BMPs".

- All excess excavation shall remain on-site and shall be stockpiled or spread at a location determined by the engineer.

- The developer for this project is R & R Realty, LLC, Jay W. Russell, Manager (316-722-2417)

## Benchmarks

BM #1: Crows foot cut at SE corner of curb inlet south side of Kollmeyer near NE corner of Lot 82, Block A, Edge Water Addition.  
 Elev. = 1335.36 NGVD29

BM #2: Brass disc on top of curb by fire hydrant at SE corner of intersection of Kollmeyer and Kollmeyer Ct. (Lots 63-82, Block A) at the NW corner of Lot 82, Block A, Edge Water Addition.  
 Elev. = 1336.61 NGVD29

BM #3: "□" on Top of Curb, east side of Kollmeyer Ct. (Lots 63-82, Block A) near NW Corner of Lot 80, Block A, Edge Water Addition.  
 Elev. = 1333.99 NGVD29

BM #4: "□" on Top of Curb, east side of Kollmeyer Ct. (Lots 63-82, Block A) near NW Corner of Lot 78, Block A, Edge Water Addition.  
 Elev. = 1334.26 NGVD29

**Project Earthwork Totals**  
 Street Grading Only  
 Excavation = 506 C.Y.  
 Loose Fill = 547 C.Y.  
 Compacted Fill = 77 C.Y.  
 Borrow Exc. = 235 C.Y.

**Esmt. Grading (For Info. Only)**  
 Excavation = 209 C.Y.  
 Loose Fill = 421 C.Y.

**Total Project Length**  
 859 L.F. = 0.16 Miles

# STREET PAVING FOR KOLLMMEYER to serve **EDGE WATER ADD. - PH. II**

Kollmeyer, from the west line of Lot 83, Block A  
 to east line of Lot 24, Block C.

Kollmeyer Ct. (Lots 83-96, Block A) from the south line Kollmeyer  
 south to and including the cul-de-sac

## CITY OF WICHITA, KANSAS

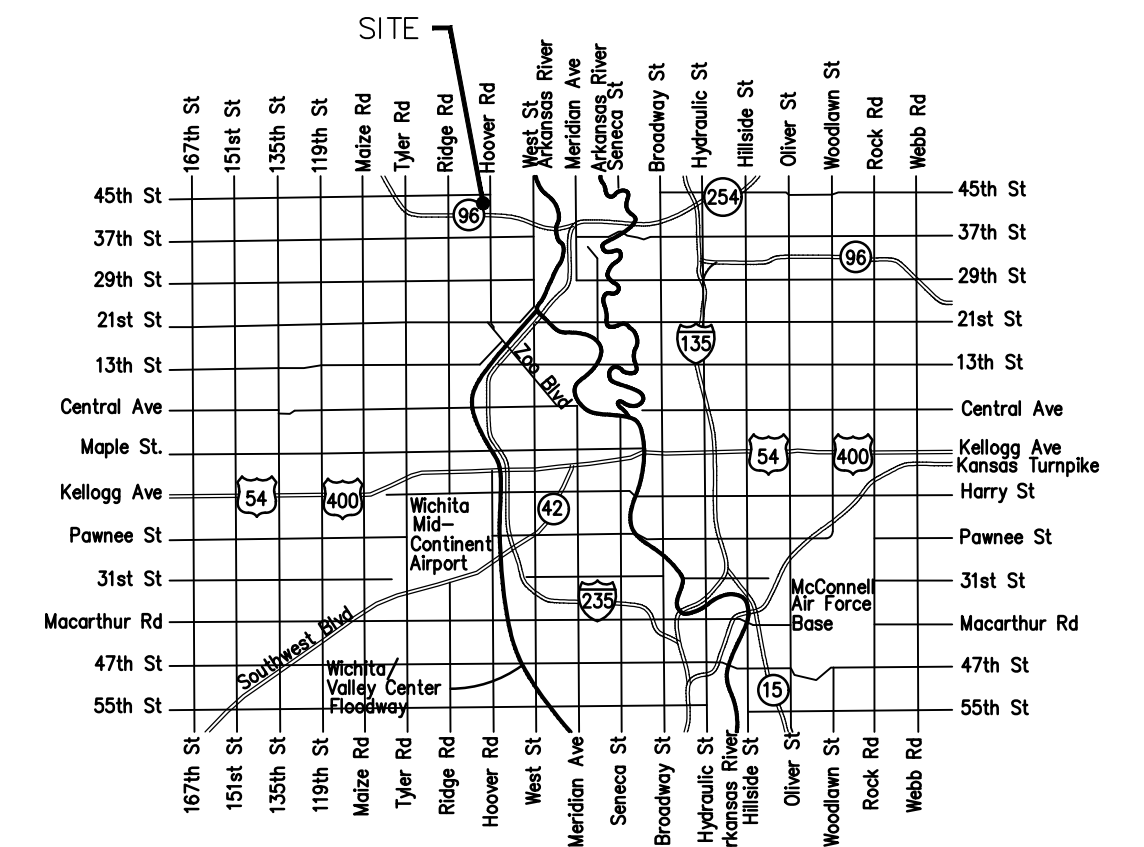
Gary Janzen, P.E. City Engineer

Project Number

472-84583

O.C.A. Number

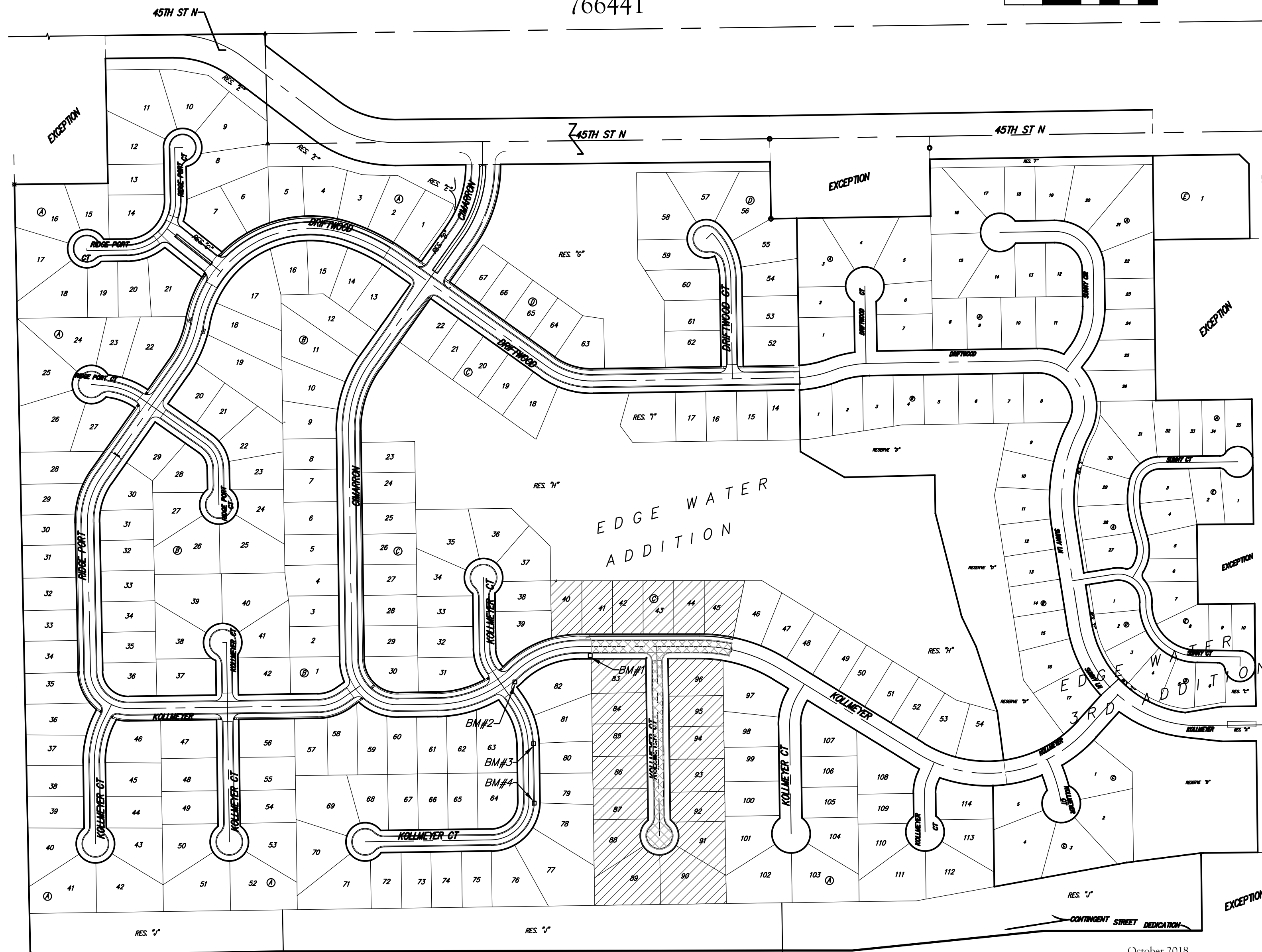
766441



## Vicinity Map

## Sheet Index

Title Sheet	1
Kollmeyer	2
Kollmeyer Ct.	3
Erosion Control/Grading Plan	4
Asphalt Paving Detail	5
Curb & Gutter Detail	6
Sign Detail	7
Valley Gutter Detail	8
Erosion Control BMP Details	9-13
Street X-Sections	14-16
Coordinate Sheet	17
Copy of Plat	18-19



HIGHWAY K-96  
 (DEED BOOK 1388, PAGE 557)

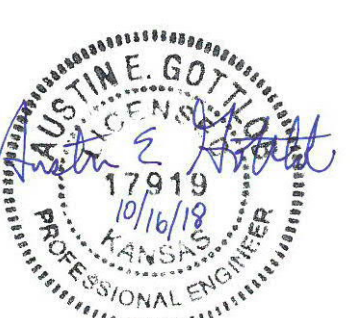
HIGHWAY K-96  
 D.C.C. C-8172-66

HIGHWAY K-96  
 (DEED BOOK 1377, PAGE 307)

October 2018



Baughman Company, P.A. 315 Ellis St. Wichita, KS 67211 P 316-262-7271 F 316-262-0143  
 ENGINEERING | SURVEYING | PLANNING | LANDSCAPE ARCHITECTURE



Benefit District  
 Proposed Streets