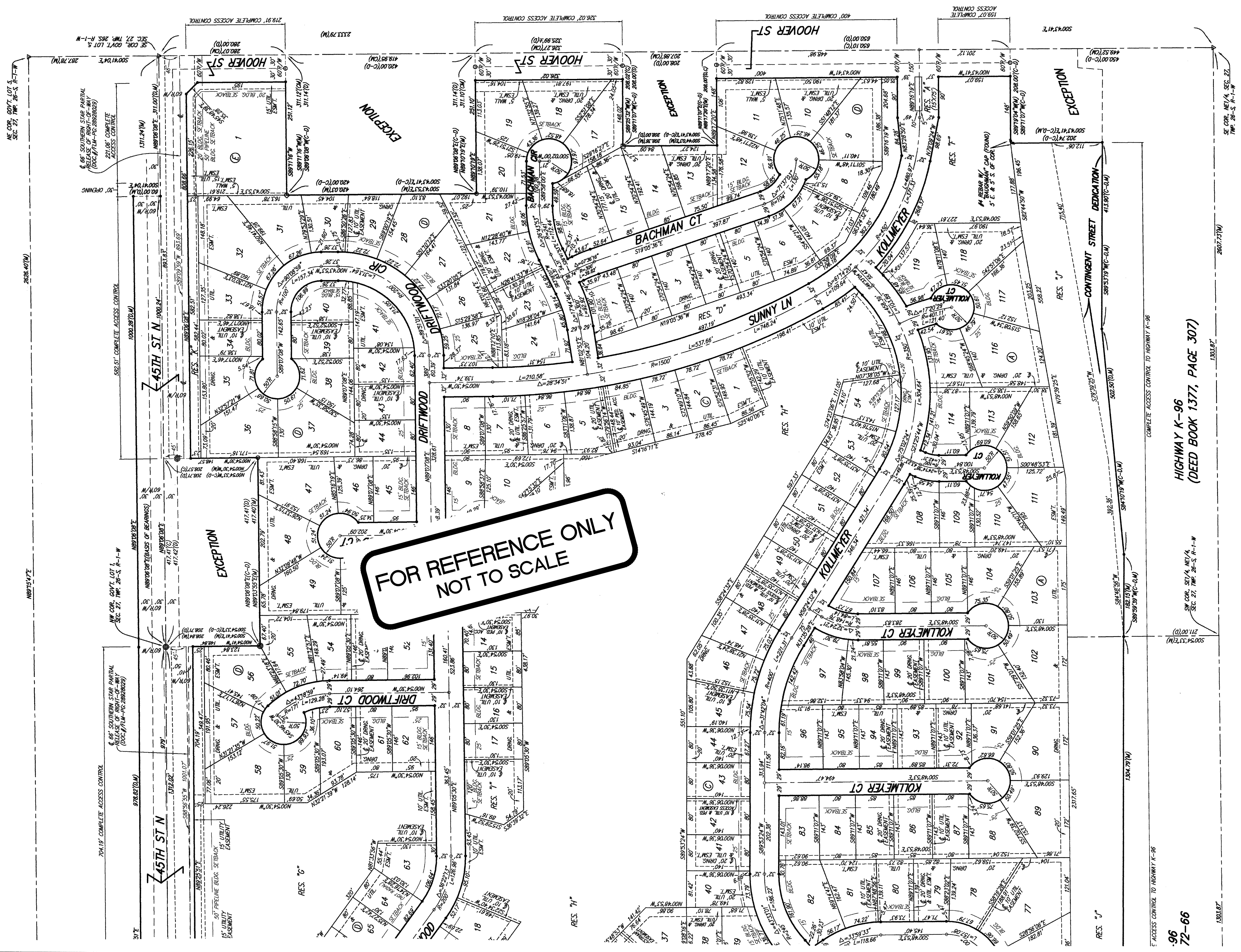


# EDGE WATER ADDITION WICHITA, SEDGWICK COUNTY, KANSAS



FOR REFERENCE ONLY  
NOT TO SCALE

LOT	BLOCK	ELEVATION	NOTES
1-8, 10-25	A	1336.0	
26-38, 40-54	C	1333.1	
55-67	D	1333.1	



- #1 REBAR W/ "BAUGHMAN" CAP (SET)
- #2 REBAR W/ "BAUGHMAN" CAP (FOUND)
- #3 REBAR W/ "BAUGHMAN" CAP (FOUND)
- #4 REBAR W/ "BAUGHMAN" CAP (FOUND)
- #5 REBAR W/ "BAUGHMAN" CAP (FOUND)
- #6 REBAR W/ "BAUGHMAN" CAP (FOUND)
- #7 REBAR W/ "BAUGHMAN" CAP (FOUND)
- #8 REBAR W/ "BAUGHMAN" CAP (FOUND)
- #9 REBAR W/ "BAUGHMAN" CAP (FOUND)
- #10 REBAR W/ "BAUGHMAN" CAP (FOUND)
- #11 REBAR W/ "BAUGHMAN" CAP (FOUND)
- #12 REBAR W/ "BAUGHMAN" CAP (FOUND)
- #13 REBAR W/ "BAUGHMAN" CAP (FOUND)
- #14 REBAR W/ "BAUGHMAN" CAP (FOUND)
- #15 REBAR W/ "BAUGHMAN" CAP (FOUND)
- #16 REBAR W/ "BAUGHMAN" CAP (FOUND)
- #17 REBAR W/ "BAUGHMAN" CAP (FOUND)
- #18 REBAR W/ "BAUGHMAN" CAP (FOUND)
- #19 REBAR W/ "BAUGHMAN" CAP (FOUND)
- #20 REBAR W/ "BAUGHMAN" CAP (FOUND)
- #21 REBAR W/ "BAUGHMAN" CAP (FOUND)
- #22 REBAR W/ "BAUGHMAN" CAP (FOUND)
- #23 REBAR W/ "BAUGHMAN" CAP (FOUND)
- #24 REBAR W/ "BAUGHMAN" CAP (FOUND)
- #25 REBAR W/ "BAUGHMAN" CAP (FOUND)
- #26 REBAR W/ "BAUGHMAN" CAP (FOUND)
- #27 REBAR W/ "BAUGHMAN" CAP (FOUND)
- #28 REBAR W/ "BAUGHMAN" CAP (FOUND)
- #29 REBAR W/ "BAUGHMAN" CAP (FOUND)
- #30 REBAR W/ "BAUGHMAN" CAP (FOUND)
- #31 REBAR W/ "BAUGHMAN" CAP (FOUND)
- #32 REBAR W/ "BAUGHMAN" CAP (FOUND)
- #33 REBAR W/ "BAUGHMAN" CAP (FOUND)
- #34 REBAR W/ "BAUGHMAN" CAP (FOUND)
- #35 REBAR W/ "BAUGHMAN" CAP (FOUND)
- #36 REBAR W/ "BAUGHMAN" CAP (FOUND)
- #37 REBAR W/ "BAUGHMAN" CAP (FOUND)
- #38 REBAR W/ "BAUGHMAN" CAP (FOUND)
- #39 REBAR W/ "BAUGHMAN" CAP (FOUND)
- #40 REBAR W/ "BAUGHMAN" CAP (FOUND)
- #41 REBAR W/ "BAUGHMAN" CAP (FOUND)
- #42 REBAR W/ "BAUGHMAN" CAP (FOUND)
- #43 REBAR W/ "BAUGHMAN" CAP (FOUND)
- #44 REBAR W/ "BAUGHMAN" CAP (FOUND)
- #45 REBAR W/ "BAUGHMAN" CAP (FOUND)
- #46 REBAR W/ "BAUGHMAN" CAP (FOUND)
- #47 REBAR W/ "BAUGHMAN" CAP (FOUND)
- #48 REBAR W/ "BAUGHMAN" CAP (FOUND)
- #49 REBAR W/ "BAUGHMAN" CAP (FOUND)
- #50 REBAR W/ "BAUGHMAN" CAP (FOUND)
- #51 REBAR W/ "BAUGHMAN" CAP (FOUND)
- #52 REBAR W/ "BAUGHMAN" CAP (FOUND)
- #53 REBAR W/ "BAUGHMAN" CAP (FOUND)
- #54 REBAR W/ "BAUGHMAN" CAP (FOUND)
- #55 REBAR W/ "BAUGHMAN" CAP (FOUND)
- #56 REBAR W/ "BAUGHMAN" CAP (FOUND)
- #57 REBAR W/ "BAUGHMAN" CAP (FOUND)
- #58 REBAR W/ "BAUGHMAN" CAP (FOUND)
- #59 REBAR W/ "BAUGHMAN" CAP (FOUND)
- #60 REBAR W/ "BAUGHMAN" CAP (FOUND)
- #61 REBAR W/ "BAUGHMAN" CAP (FOUND)
- #62 REBAR W/ "BAUGHMAN" CAP (FOUND)
- #63 REBAR W/ "BAUGHMAN" CAP (FOUND)
- #64 REBAR W/ "BAUGHMAN" CAP (FOUND)
- #65 REBAR W/ "BAUGHMAN" CAP (FOUND)
- #66 REBAR W/ "BAUGHMAN" CAP (FOUND)
- #67 REBAR W/ "BAUGHMAN" CAP (FOUND)
- #68 REBAR W/ "BAUGHMAN" CAP (FOUND)
- #69 REBAR W/ "BAUGHMAN" CAP (FOUND)
- #70 REBAR W/ "BAUGHMAN" CAP (FOUND)
- #71 REBAR W/ "BAUGHMAN" CAP (FOUND)
- #72 REBAR W/ "BAUGHMAN" CAP (FOUND)
- #73 REBAR W/ "BAUGHMAN" CAP (FOUND)
- #74 REBAR W/ "BAUGHMAN" CAP (FOUND)
- #75 REBAR W/ "BAUGHMAN" CAP (FOUND)
- #76 REBAR W/ "BAUGHMAN" CAP (FOUND)
- #77 REBAR W/ "BAUGHMAN" CAP (FOUND)
- #78 REBAR W/ "BAUGHMAN" CAP (FOUND)
- #79 REBAR W/ "BAUGHMAN" CAP (FOUND)
- #80 REBAR W/ "BAUGHMAN" CAP (FOUND)
- #81 REBAR W/ "BAUGHMAN" CAP (FOUND)
- #82 REBAR W/ "BAUGHMAN" CAP (FOUND)
- #83 REBAR W/ "BAUGHMAN" CAP (FOUND)
- #84 REBAR W/ "BAUGHMAN" CAP (FOUND)
- #85 REBAR W/ "BAUGHMAN" CAP (FOUND)
- #86 REBAR W/ "BAUGHMAN" CAP (FOUND)
- #87 REBAR W/ "BAUGHMAN" CAP (FOUND)
- #88 REBAR W/ "BAUGHMAN" CAP (FOUND)
- #89 REBAR W/ "BAUGHMAN" CAP (FOUND)
- #90 REBAR W/ "BAUGHMAN" CAP (FOUND)
- #91 REBAR W/ "BAUGHMAN" CAP (FOUND)
- #92 REBAR W/ "BAUGHMAN" CAP (FOUND)
- #93 REBAR W/ "BAUGHMAN" CAP (FOUND)
- #94 REBAR W/ "BAUGHMAN" CAP (FOUND)
- #95 REBAR W/ "BAUGHMAN" CAP (FOUND)
- #96 REBAR W/ "BAUGHMAN" CAP (FOUND)
- #97 REBAR W/ "BAUGHMAN" CAP (FOUND)
- #98 REBAR W/ "BAUGHMAN" CAP (FOUND)
- #99 REBAR W/ "BAUGHMAN" CAP (FOUND)
- #100 REBAR W/ "BAUGHMAN" CAP (FOUND)
- #101 REBAR W/ "BAUGHMAN" CAP (FOUND)
- #102 REBAR W/ "BAUGHMAN" CAP (FOUND)
- #103 REBAR W/ "BAUGHMAN" CAP (FOUND)
- #104 REBAR W/ "BAUGHMAN" CAP (FOUND)
- #105 REBAR W/ "BAUGHMAN" CAP (FOUND)
- #106 REBAR W/ "BAUGHMAN" CAP (FOUND)
- #107 REBAR W/ "BAUGHMAN" CAP (FOUND)
- #108 REBAR W/ "BAUGHMAN" CAP (FOUND)
- #109 REBAR W/ "BAUGHMAN" CAP (FOUND)
- #110 REBAR W/ "BAUGHMAN" CAP (FOUND)
- #111 REBAR W/ "BAUGHMAN" CAP (FOUND)
- #112 REBAR W/ "BAUGHMAN" CAP (FOUND)
- #113 REBAR W/ "BAUGHMAN" CAP (FOUND)
- #114 REBAR W/ "BAUGHMAN" CAP (FOUND)
- #115 REBAR W/ "BAUGHMAN" CAP (FOUND)
- #116 REBAR W/ "BAUGHMAN" CAP (FOUND)
- #117 REBAR W/ "BAUGHMAN" CAP (FOUND)
- #118 REBAR W/ "BAUGHMAN" CAP (FOUND)
- #119 REBAR W/ "BAUGHMAN" CAP (FOUND)

NOTE: THIS GRADING PLAN FOR DRAINAGE HAS BEEN DEVELOPED FOR THIS SUBDIVISION AND IS ON FILE WITH THE CITY OF WICHITA, KANSAS. ALL DRAINAGE ELEMENTS ARE TO BE INSTALLED IN ACCORDANCE WITH THE CITY OF WICHITA, KANSAS, STANDARD SPECIFICATIONS FOR CONSTRUCTION OF PUBLIC WORKS, EDITION 2007, AND THE CITY OF WICHITA, KANSAS, STANDARD SPECIFICATIONS FOR CONSTRUCTION OF PUBLIC WORKS, EDITION 2007. NO OBSTRUCTIONS WHICH IMPED THE FLOW OF THIS DRAINAGE SYSTEM ARE ALLOWED.

BENCHMARK: HOOPER AND 45TH ST. NORTH CORNER OF INTERSECTION. ELEVATION 1333.1. BENCH MARK IS 5' E. & 5' S. OF CORNER. 5' E. & 5' S. OF CORNER. 5' E. & 5' S. OF CORNER. 5' E. & 5' S. OF CORNER. ELEVATION 1333.1 (MAD 20)

**Baughman Company, P.A.**  
 315 5th St. Wichita, KS 67211 | 316.626.2171 | 316.626.5149  
 Baughman | Incorporated | Equal Opportunity Employer | Licensed Professional Engineer

**Baughman Company, P.A.**  
 315 5th St. Wichita, KS 67211 | 316.626.2171 | 316.626.5149  
 Baughman | Incorporated | Equal Opportunity Employer | Licensed Professional Engineer

EDGE WATER ADD. - PH. II  
**Copy of PLAT**  
 STREET IMPROVEMENTS