

BENCHMARKS:
 BM #1: Crows foot cut at SE corner of curb inlet south side of Kollmeyer near NE corner of Lot 82, Block A, Edge Water Addition.
 Elev. = 1335.36 NGVD29

BM #2: Brass disc on top of curb by fire hydrant at SE corner of intersection of Kollmeyer and Kollmeyer Ct. (Lots 63-82, Block A) at the NW corner of Lot 82, Block A, Edge Water Addition.
 Elev. = 1336.61 NGVD29

BM #3: "□" on Top of Curb, east side of Kollmeyer Ct. (Lots 63-82, Block A) near NW Corner of Lot 80, Block A, Edge Water Addition.
 Elev. = 1333.99 NGVD29

BM #4: "□" on Top of Curb, east side of Kollmeyer Ct. (Lots 63-82, Block A) near NW Corner of Lot 78, Block A, Edge Water Addition.
 Elev. = 1334.26 NGVD29

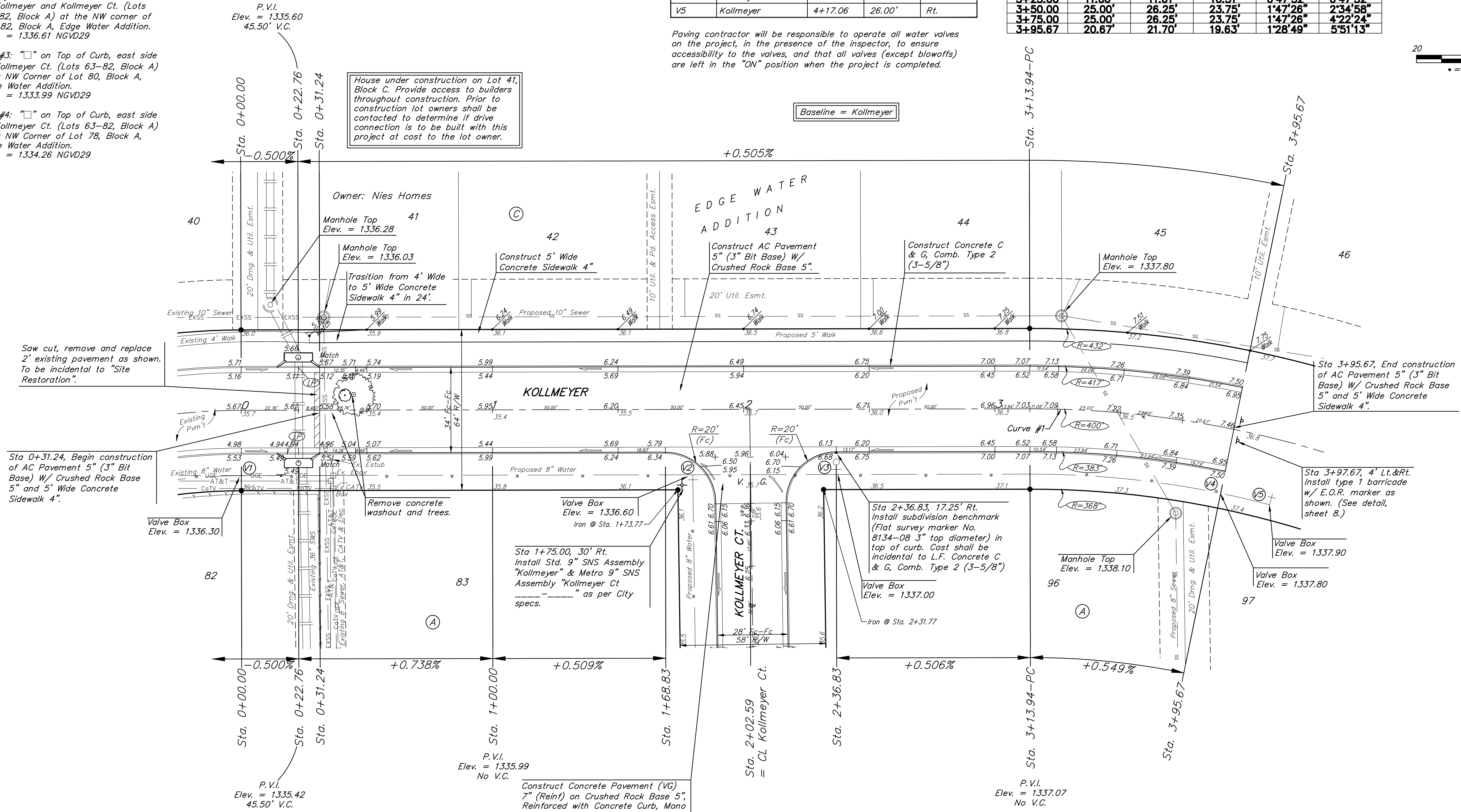
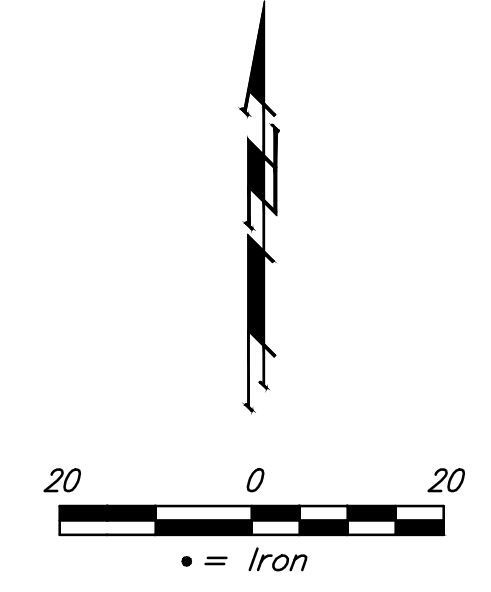
Subdivision Bench Marks		
Street & Station	Location Description	Elevation
Street 2+36.83, 17.25' Rt.	Adjacent to Fire Hydrant at E. End of SE Curb Return of Kollmeyer and Kollmeyer Ct. (Lots 83-96, Block A).	

WATER VALVE LOCATION TABLE

VALVE NUMBER	STREET	BASELINE STATION	OFFSET DISTANCE	OFFSET DIRECTION
V1	Kollmeyer	0+00.00	26.00'	Rt.
V2	Kollmeyer	1+79.69	26.00'	Rt.
V3	Kollmeyer	2+36.83	26.00'	Rt.
V4	Kollmeyer	3+95.67	26.00'	Rt.
V5	Kollmeyer	4+17.06	26.00'	Rt.

Paving contractor will be responsible to operate all water valves on the project, in the presence of the inspector, to ensure accessibility to the valves, and that all valves (except blowoffs) are left in the "ON" position when the project is completed.

Curve #1					
Curve Data Based on Centerline					
Rad. = 400'		Delta = 11°42'26"		Tangent = 41.01'	
Arc = 81.73'		L.C. = 81.59'		Def./Ft. = 4.29728 Min.	
Station	Arc	8' Left	8' Right	Defl.	Total Defl.
3+13.94	-	-	-	0°00'00"	0°00'00"
3+25.00	11.06'	11.61'	10.51'	0°47'32"	0°47'32"
3+50.00	25.00'	26.25'	23.75'	1°47'26"	2°34'58"
3+75.00	25.00'	26.25'	23.75'	1°47'26"	4°22'24"
3+95.67	20.67'	21.70'	19.63'	1°28'49"	5°51'13"



Saw cut, remove and replace 2" existing pavement as shown. To be incidental to "Site Restoration".

Sta 0+31.24, Begin construction of AC Pavement 5" (3" Bit Base) W/ Crushed Rock Base 5" and 5' Wide Concrete Sidewalk 4".

Sta 3+95.67, End construction of AC Pavement 5" (3" Bit Base) W/ Crushed Rock Base 5" and 5' Wide Concrete Sidewalk 4".

Sta 3+97.67, 4' Lt.&Rt. Install type 1 barricade w/ E.O.R. marker as shown. (See detail, sheet 8.)

Construct Concrete Pavement (VG) 7" (Reint) on Crushed Rock Base 5", Reinforced with Concrete Curb, Mono Edge (6-5/8"). Transition from Concrete Curb, Mono Edge (6-5/8") to Concrete C & G, Comb. Type 2 (3-5/8") in 5', outside of valley gutter radius (both sides).

NOTE: ROLL TYPE CURB & GUTTER (TYPE 2) TO BE CONSTRUCTED ON THE PAVEMENT SHOWN ON THIS SHEET. TOP OF CURB ELEVATIONS ARE GIVEN FOR FULL HEIGHT CURB (TYPE 4).

Baughman Company, P.A.
 ENGINEERING, ARCHITECTURE, PLANNING, LANDSCAPE ARCHITECTURE
 1100 W. 15th St., Suite 200, Denver, CO 80202
 Phone: 303.733.8800
 Fax: 303.733.8801
 www.baughman.com

EDGE WATER ADD. - PH. II
KOLLMAYER
 STREET IMPROVEMENTS