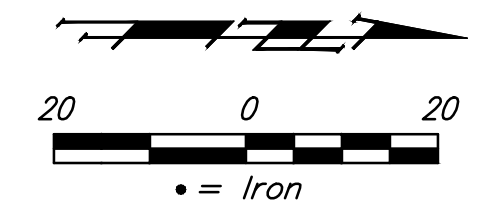


BENCHMARKS:
 BM #1: Crows foot cut at SE corner of curb inlet south side of Kollmeyer near NE corner of Lot 82, Block A, Edge Water Addition.
 Elev. = 1335.36 NGVD29

BM #2: Brass disc on top of curb by fire hydrant at SE corner of intersection of Kollmeyer and Kollmeyer Ct. (Lots 63-82, Block A) at the NW corner of Lot 82, Block A, Edge Water Addition.
 Elev. = 1336.61 NGVD29

BM #3: "□" on Top of Curb, east side of Kollmeyer Ct. (Lots 63-82, Block A) near NW Corner of Lot 80, Block A, Edge Water Addition.
 Elev. = 1333.99 NGVD29

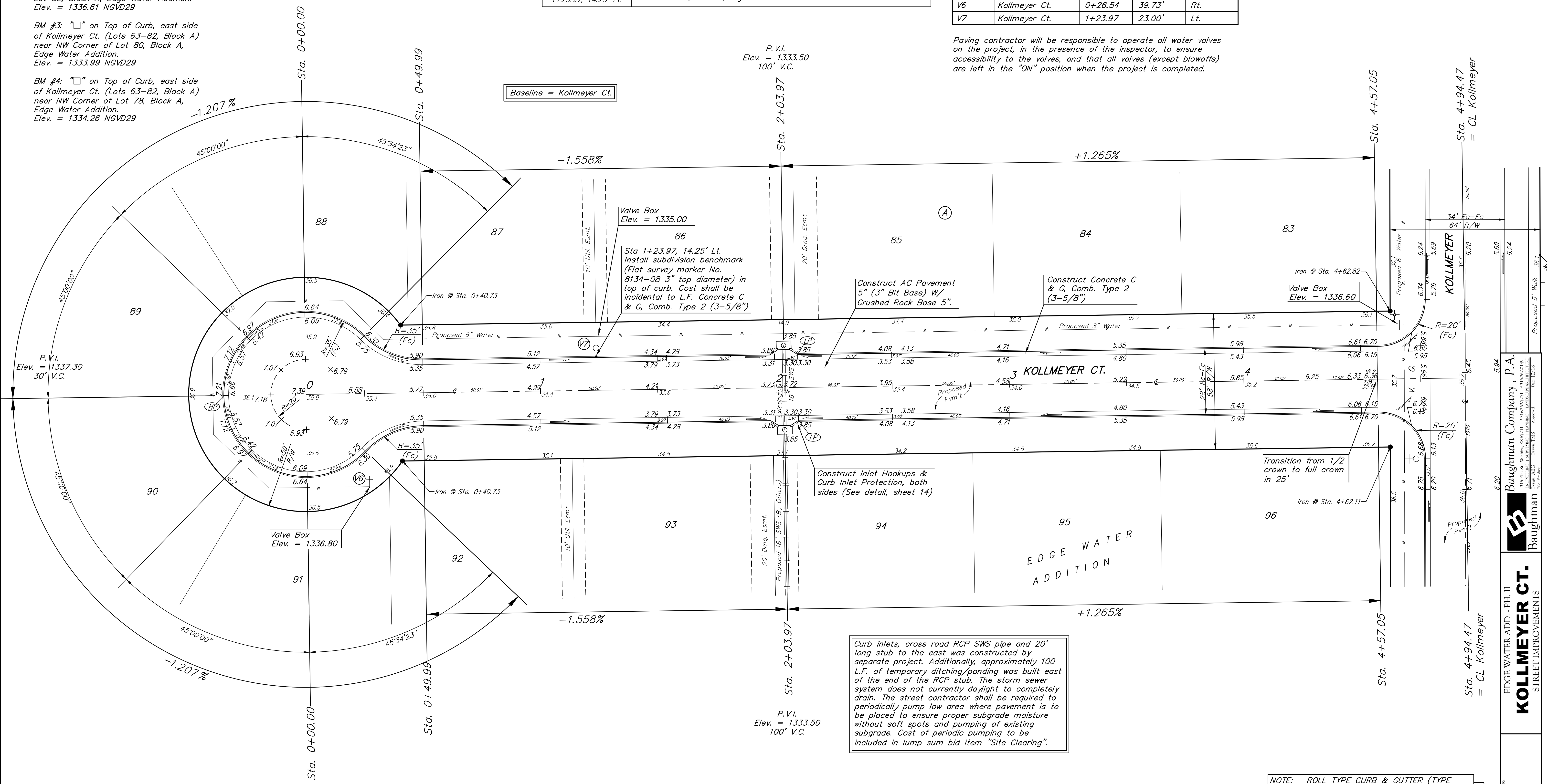
BM #4: "□" on Top of Curb, east side of Kollmeyer Ct. (Lots 63-82, Block A) near NW Corner of Lot 78, Block A, Edge Water Addition.
 Elev. = 1334.26 NGVD29



Subdivision Bench Marks		
Street & Station	Location Description	Elevation
Kollmeyer Ct. 1+23.97, 14.25' Lt.	Adjacent to Fire Hydrant near common front lot corner of Lots 86-87, Block A, Edge Water Add.	

WATER VALVE LOCATION TABLE				
VALVE NUMBER	STREET	BASELINE STATION	OFFSET DISTANCE	OFFSET DIRECTION
V6	Kollmeyer Ct.	0+26.54	39.73'	Rt.
V7	Kollmeyer Ct.	1+23.97	23.00'	Lt.

Paving contractor will be responsible to operate all water valves on the project, in the presence of the inspector, to ensure accessibility to the valves, and that all valves (except blowoffs) are left in the "ON" position when the project is completed.



Curb inlets, cross road RCP SWS pipe and 20' long stub to the east was constructed by separate project. Additionally, approximately 100 L.F. of temporary ditching/ponding was built east of the end of the RCP stub. The storm sewer system does not currently daylight to completely drain. The street contractor shall be required to periodically pump low area where pavement is to be placed to ensure proper subgrade moisture without soft spots and pumping of existing subgrade. Cost of periodic pumping to be included in lump sum bid item "Site Clearing".

NOTE: ROLL TYPE CURB & GUTTER (TYPE 2) TO BE CONSTRUCTED ON THE PAVEMENT SHOWN ON THIS SHEET. TOP OF CURB ELEVATIONS ARE GIVEN FOR FULL HEIGHT CURB (TYPE 4).