

SANITARY SEWER EXTENSION

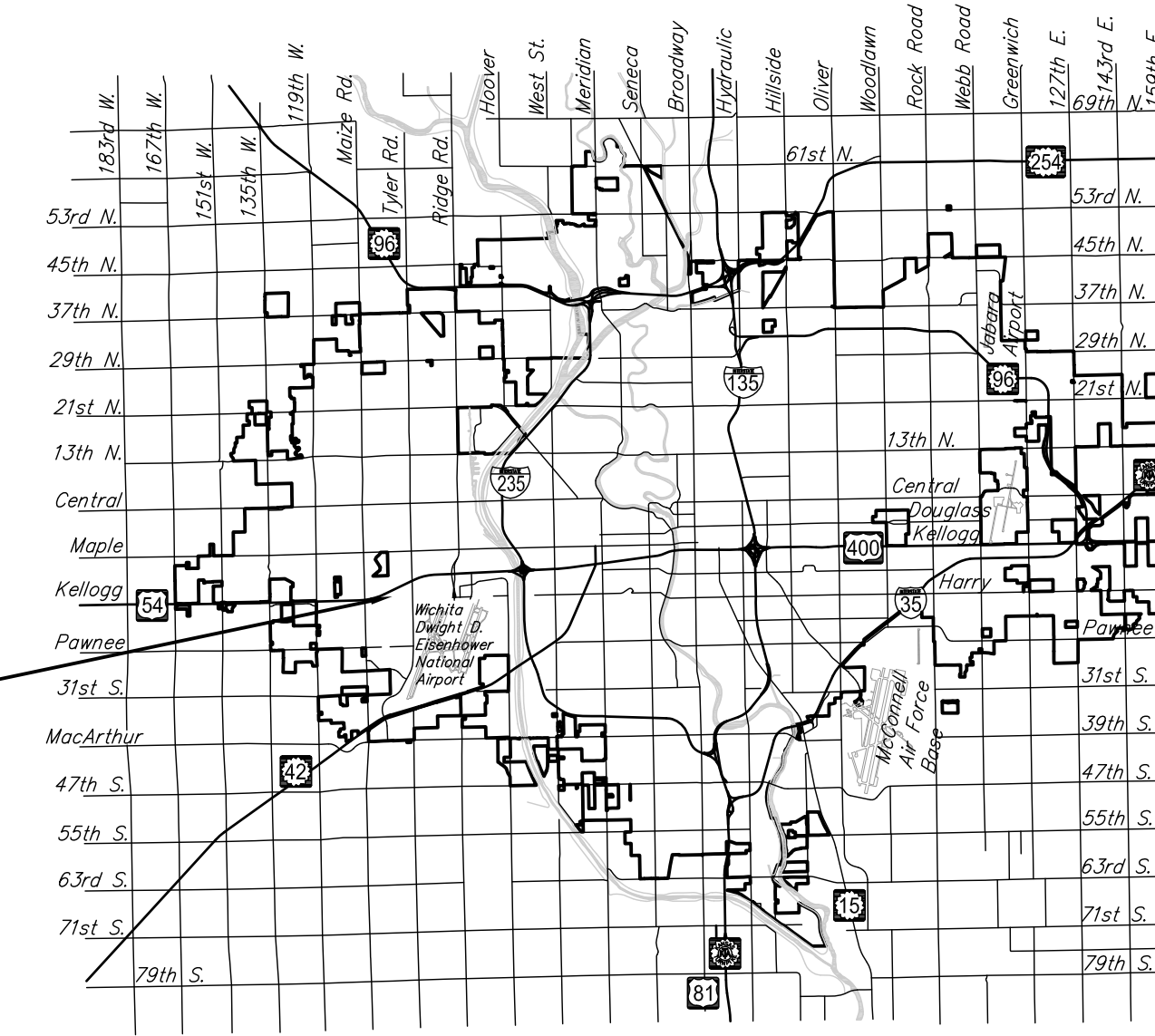
to serve
 Lots 2 and 3, Block A
 9540 - 9504 West Harry Street

Osbeck Addition CITY OF WICHITA, KANSAS

Gary Janzen, P.E. City Engineer
 Project Number
 2265 PPS (607861)

AS-BUILT PLANS
 CONTRACTOR: CK
 CONTRACTING
 INSPECTOR: RUGGLES & BOHM
 PDF BY: LCT 08/19/2016

T. Mason - City of Wichita, Inspector
 Release Date: 11/2/2018
 : apr 11/14/2018



PROJECT LOCATION

Vicinity Map

Sheet Index

1. TITLE SHEET
2. PLAN & PROFILES
3. EROSION CONTROL PLAN
4. PLAT

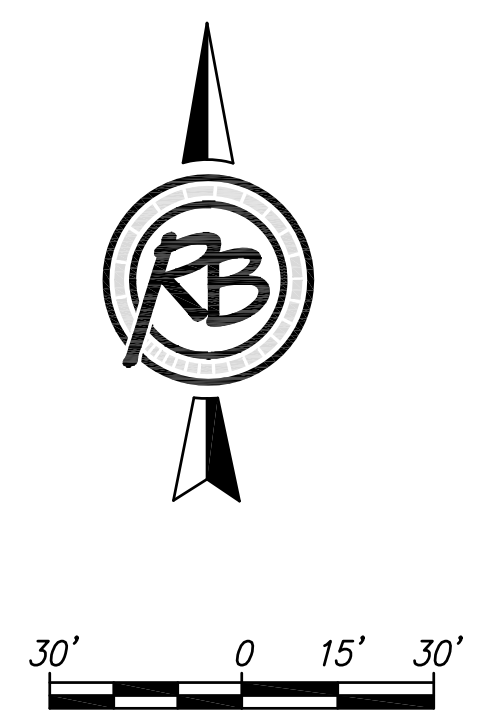
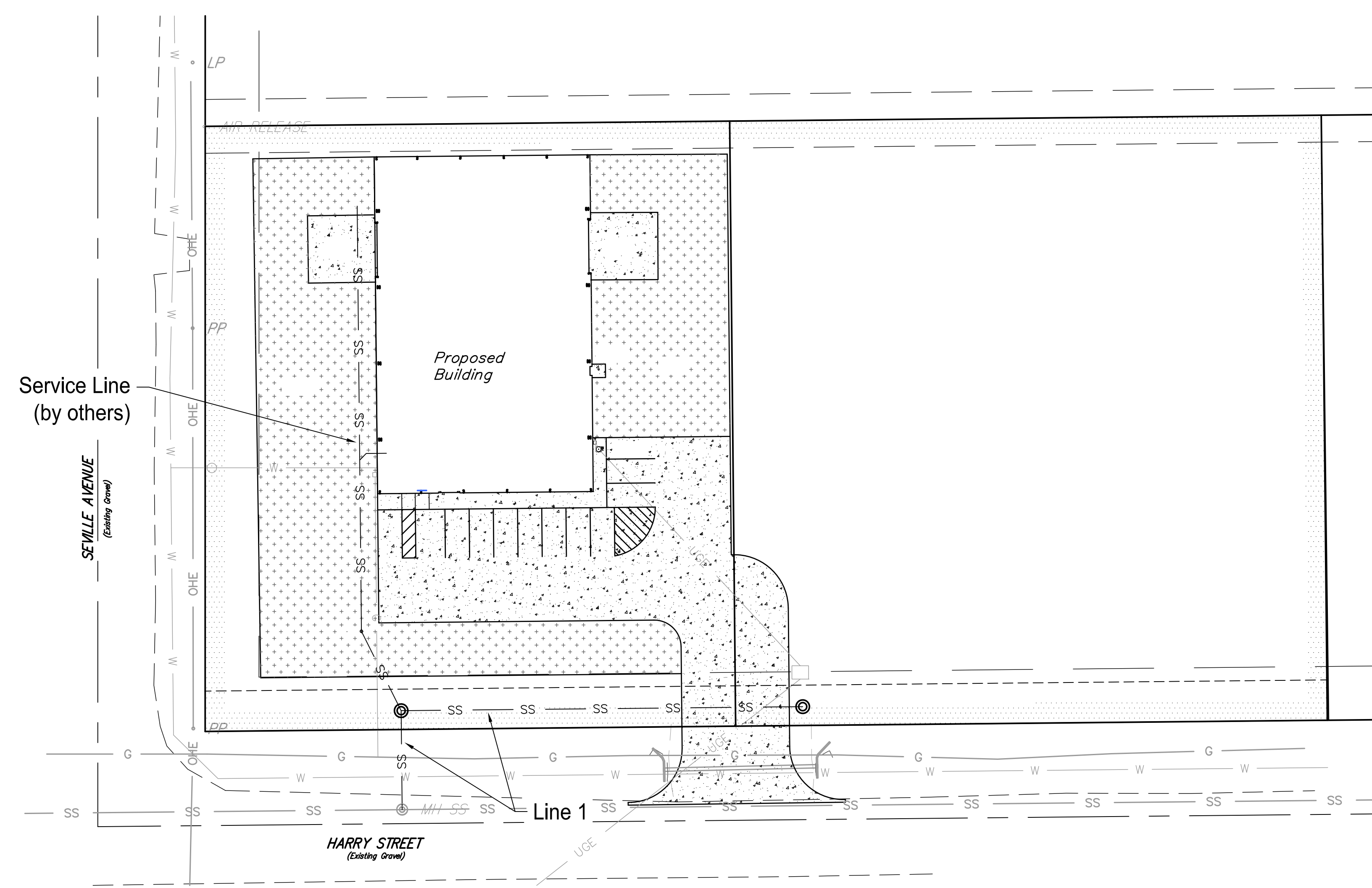
The following details are available on the City's website:

- Precast SS Manhole (SS 101)
- Manhole Frame & Cover (SS 102)
- Vertical Riser (SS 103)
- Cleanout (SS 104)
- Erosion Control (SW501-SW505)

GENERAL NOTES:

1. The Contractor shall comply with all applicable safety regulations. All construction shall be completed following current City Standard Specifications and Special Provisions.
2. Contractor will be required to provide notice to utility companies a minimum of seventy-two (72) hours prior to any excavation, as follows:
 Kansas One-Call 687-2470
 The Contractor must notify the following in case of an emergency:
 AT&T 1-800-286-8313
 Black Hills Energy 1-316-941-1628
 City of Wichita Water 1-316-268-4555
 City of Wichita Sewer 1-316-268-4073
 City of Wichita Stormwater 1-316-268-4090
 City of Wichita Traffic 1-316-268-4034
 Cox Communications 1-316-268-7195
 Kansas Gas Service 1-888-482-4850
 Westar 1-316-261-6554
3. Utility service lines, poles, etc. are to be adjusted as necessary by others prior to construction unless the plans specifically call for their adjustment by the Contractor or unless the plans specifically identify a utility to be adjusted by its owner during construction. Existing utilities and their location, as shown on the plans, represent the best information obtainable for design. The Contractor will be required to work around existing utilities within the right-of-way which do not conflict with proposed construction.
4. Rubble from the removal of miscellaneous structures and excess excavation which is to be wasted shall be disposed of on sites to be provided by the Contractor. These sites shall be approved by the Engineer as to suitability, appearance and site location. Locations, in the opinion of the Engineer, that will leave an unsightly appearance will not be approved. All disposal sites must be approved by the Kansas Department of Health and Environment. Material either stockpiled or disposed of in a flood plain will require a Kansas State Board of Agriculture permit. Any material dumped in waters of the United States or wetlands is subject to U.S. Corps. of Engineers permitting regulations. Any material buried or stockpiled beyond approved construction limits will require additional archaeological investigations unless buried in a previously approved borrow location.
5. Trees and shrubs in public right-of-way which are in direct conflict with proposed new construction shall be removed by the Contractor with the Engineer's approval. Trees and shrubs which are not in direct conflict with proposed new construction shall be saved and protected from damage.
6. The Contractor shall give all property owners and/or tenants of developed property abutting the construction of this project a minimum of ten (10) days notice prior to start of construction.
7. The Contractor shall be responsible for preserving property irons. The Contractor will be required to re-establish any property irons which are damaged or destroyed by his construction operations. Such irons shall be re-established by a licensed land surveyor in accordance with state laws.
8. If traffic will be impacted by construction, a traffic control plan must be submitted and approved by the City Traffic Engineer, Brian Coon at traffic@wichita.gov, before construction can begin. The Contractor shall be responsible for all traffic control measures to facilitate construction. All construction zone markings and signage shall conform to the latest version of the Manual on Uniform Traffic Control Devices (MUTCD) as published by the US Dept. of Transportation, Federal Highway Administration. All costs associated with construction markings and signage shall be the Contractors responsibility.
9. All elevations shown are NAVD 88.
10. All areas disturbed during construction that will not be under proposed pavement shall be restored to match existing conditions.
11. The Contractor shall protect from damage and support existing utilities through constructions as approved by the utility owner and the Engineer at the contractors expense.
12. Contractor shall limit the extent of trench openings overnight and weekends to less than 50 feet.
13. Any sidewalk, drive approach, curb, or street pavement removed to construct project must have a pavement cut permit and be replaced by the City contractor. Permits can be obtained by calling 316-268-4501 or 316-268-4480.
14. The Contractor shall notify the consultant engineer and Tom Mason at 316-268-4574 with the City of Wichita with the anticipated construction start date and notify them of project completion. Staking and inspection for this project will be the responsibility of the Contractor.
15. All stubs and plugged pipes shall be located with green plastic tape in the same manner as risers.

16. Connecting to Existing Manholes: Prior to laying sewer lines using existing stubs in existing manholes, the Contractor shall expose and verify the elevation, grade and alignment of existing stubs and notify the Engineer of any deviation from the plans. Where connection to an existing manhole that does not have an existing stub or the stub is unusable due to elevation grade or alignment, the Contractor shall bore cut into existing manhole wall to make connection using approved water stop gasket, and reshape the existing manhole invert to provide smooth flow. The cost to connecting to existing manholes is incidental to the project.
17. Contractor shall provide positive drainage away from all manhole covers.
18. The Contractor shall prevent any construction debris from entering the existing sanitary sewer during construction.
19. The Contractor shall be responsible for maintaining continuous flow of sewage through construction. Contractors proposed method for maintaining sewage flow shall be submitted and approved by the Sewer Maintenance Division (316-268-4073) prior to starting and by-passing of sewage flows.
20. Any over excavation from manhole and pipe removal shall be backfilled with AB-3 compacted to 90-95% ASTM D698.
21. The entire sewer main will be publicly maintained.
22. The Manhole to be core-drilled shall be lined according to City specifications.



APPROVED AS NOTED
 BY WICHITA PUBLIC WORKS
 ENGINEERING DIVISION

Engineering *Rebecca Dill* 4/20/2016
 Utilities *[Signature]* 4-21-16

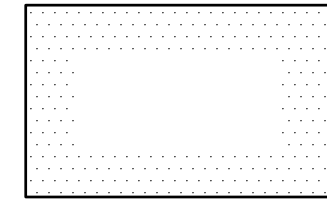
NOTE TO CONTRACTORS

Installation, inspection and testing for this project is to be provided by a Licensed Consulting Engineering Firm under contract with the Owner/Developer. Said inspection to be in accordance with the City of Wichita standard construction engineering practices and certified by a Licensed Professional Engineer in the state of Kansas. No work shall be performed by the Contractor without such inspection nor shall any work be commenced without written authorization by the City Engineering. All Construction and Materials shall comply with the current City of Wichita Specifications and Standards and Special Provisions. (on file and available at Wichita.gov).

An approved copy of these plans signed by City staff are required on-site.

Benchmark

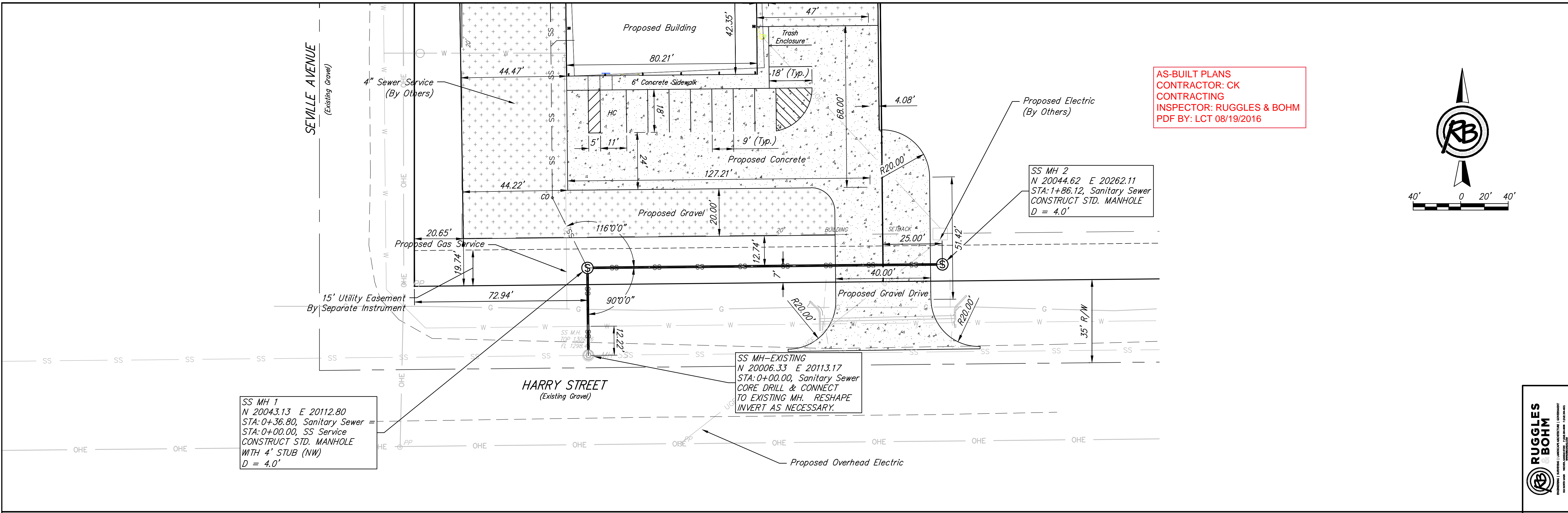
BM: City of Wichita benchmark at Southwest corner of Tyler and Harry.
 Elev. = 1,329.43 NAVD88



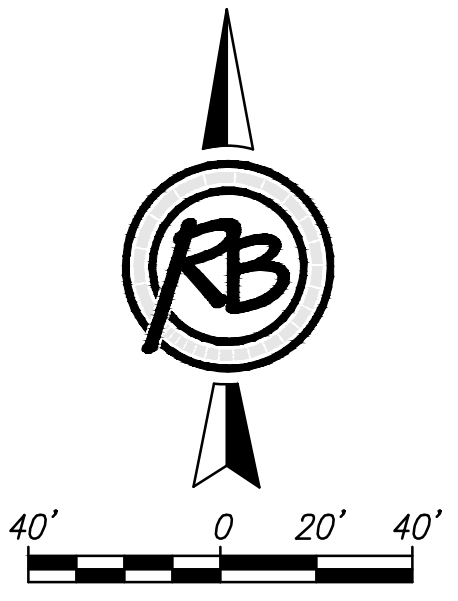
IMPROVEMENT DISTRICT



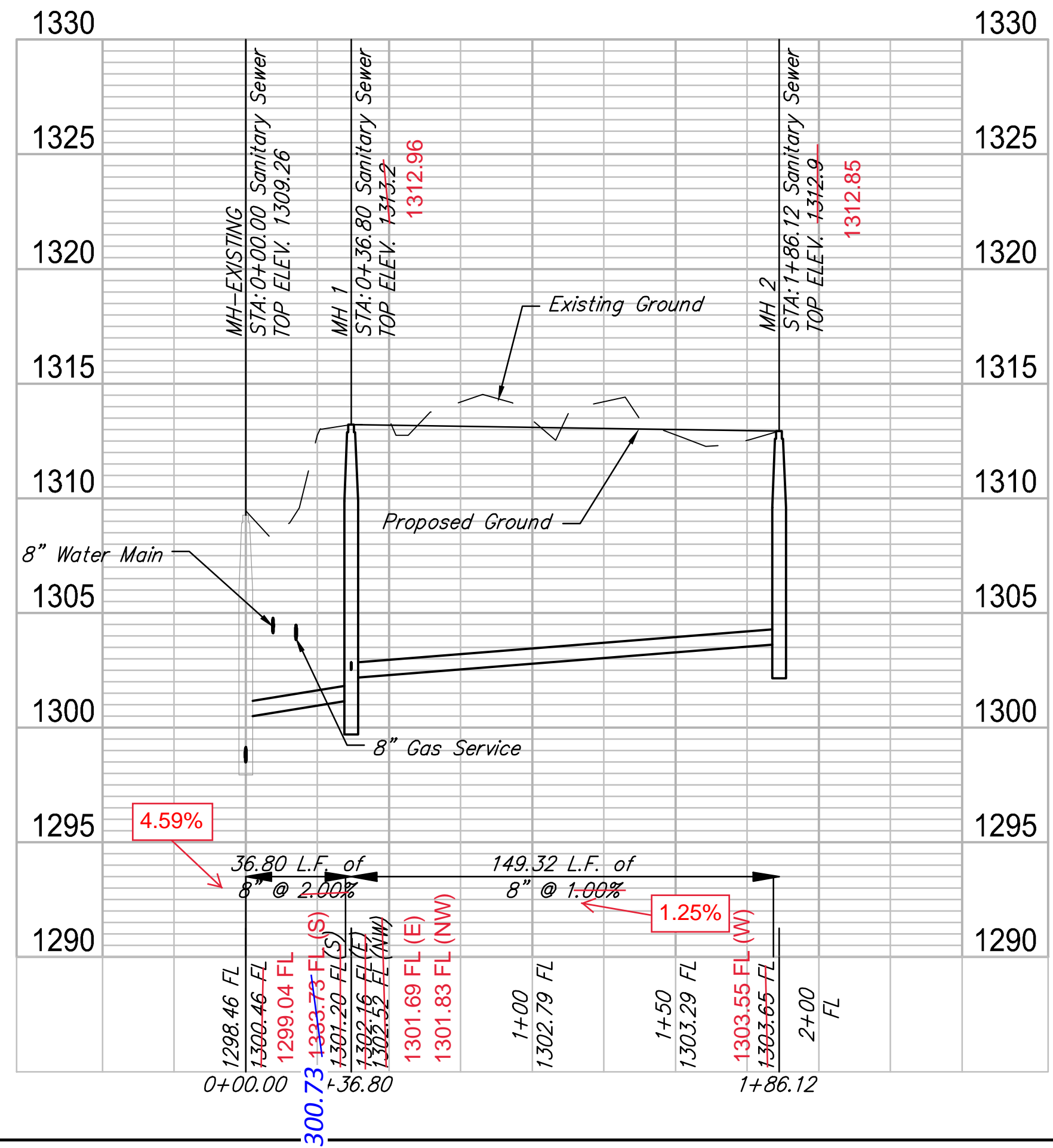
924 NORTH MAIN WICHITA, KANSAS 67203 P (316) 264-8008 F (316) 264-4621
 WWW.RBKANSAS.COM 4688E



AS-BUILT PLANS
CONTRACTOR: CK
CONTRACTING
INSPECTOR: RUGGLES & BOHM
PDF BY: LCT 08/19/2016



- Notes:
1. Field verify elevations of existing utilities prior to pipe installation.
 2. Manhole to be core-drilled shall be lined according to City specifications.



REVIEW: Feb 2016
DATE: April 2016

DESIGN: **
DRAWN: **

PROJECT NUMBER: 2265
DRAWING FILE: 4688E Base

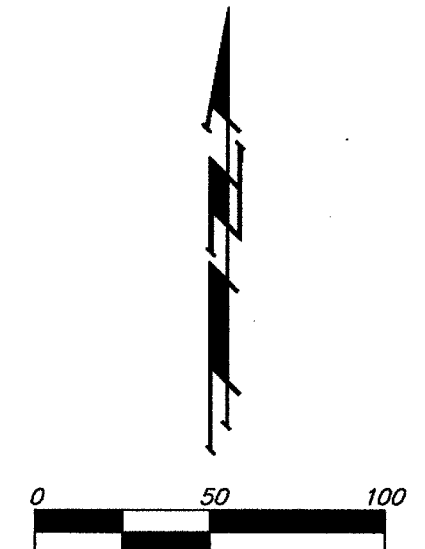
Osbeck Addition
Plan & Profile
Wichita, Kansas

RB JOB: 4688E
SHEET: 2 OF 4



OSBECK ADDITION

WICHITA, SEDGWICK COUNTY, KANSAS



- = #4 REBAR W/ "BAUGHMAN" CAP (SET)
- = #4 REBAR W/ "BAUGHMAN" CAP (FOUND)
- ⊙ = #4 REBAR (FOUND)
- ⊗ = V-NOTCH IN CONC. FOOTING OF FENCE CORNER POST (FOUND)
- = CONC NAIL (FOUND)
- = "P-K" NAIL (FOUND)

- (M) = MEASURED
- (D) = DESCRIBED
- (CM) = CALCULATED PER MEASURED INFO.
- (C-D) = CALCULATED PER DESCRIBED INFO.

NOTE:
A drainage plan has been developed for this subdivision and is on file with the City of Wichita, Kansas. Drainage intent shall remain as depicted or as modified with the approval of the City Engineer of the City of Wichita, Kansas. No obstructions which impede the flow of this drainage plan shall be allowed.

We, the undersigned, holders of a mortgage on the above described property, do hereby consent to this plat of "OSBECK ADDITION", Wichita, Sedgwick County, Kansas.

Home Bank & Trust Company

Brad D. Rucker, S. VP (Title)

State of Kansas) SS The foregoing instrument acknowledged before me, this 18th day of July, 2005, by Brad D. Rucker, S. VP of Home Bank & Trust Company, on behalf of the bank.

PATRICIA L. WISE
Notary Public - State of Kansas
My App. Expires 7/29/08

Patricia L. Wise, Notary Public
My App't. Exp. 4-20-08

State of Kansas) SS We, Baughman Company, P.A., Surveyors in aforesaid county and state do hereby certify that we have surveyed and platted "OSBECK ADDITION", Wichita, Sedgwick County, Kansas and that the accompanying plat is a true and correct exhibit of the property surveyed, described as beginning at the SW corner of the SE1/4 of Sec. 29, Twp. 27-S, R-1-W of the 6th P.M., Sedgwick County, Kansas; thence east on the south line of said SE1/4, 875.5 feet; thence north parallel to the west line of said SE1/4, 59.3 feet, more or less, to the south line of the A.T. & S.F. Railroad right-of-way; thence westerly on said south line, 897.5 feet, more or less, to the west line of said SE1/4; thence south, 402.5 feet to the point of beginning.

Existing public easements and dedications being vacated by virtue of K.S.A. 12-512(b).

Baughman Company, P.A.

Michael G. Conrey, Surveyor

Know all men by these presents that we, the undersigned, have caused the land in the surveyors certificate to be platted into Lots, a Block, and a Street to be known as "OSBECK ADDITION", Wichita, Sedgwick County, Kansas. The utility easements are hereby granted as indicated for the construction and maintenance of all public utilities. Access controls shall be as depicted on the face of the plat and are hereby granted to the City of Wichita, Kansas. The permitted opening locations shall be as determined by the City Engineer of the City of Wichita, Kansas.

Osbeck, LLC

John H. Osborne, Member

John Eck, Member

Eugene Schellenberg

State of Kansas) SS The foregoing instrument acknowledged before me, this 18th day of July, 2005, by John H. Osborne, Member of Osbeck, LLC, on behalf of the limited liability company.

SUSAN K. MONETTE
Notary Public - State of Kansas
My App. Expires 11-9-07

Susan K. Monette, Notary Public
My App't. Exp. 11-9-07

State of Kansas) SS The foregoing instrument acknowledged before me, this 18th day of July, 2005, by P. John Eck, Member of Osbeck, LLC, on behalf of the limited liability company.

SUSAN K. MONETTE
Notary Public - State of Kansas
My App. Expires 11-9-07

Susan K. Monette, Notary Public
My App't. Exp. 11-9-07

State of Kansas) SS The foregoing instrument acknowledged before me, this 18th day of July, 2005, by Eugene Schellenberg, a single person.

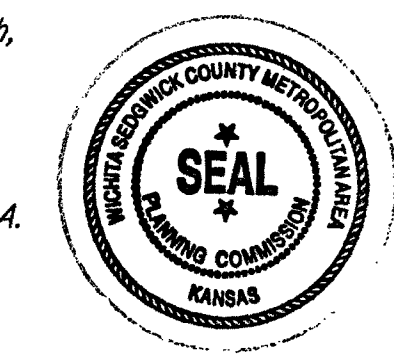
SUSAN K. MONETTE
Notary Public - State of Kansas
My App. Expires 11-9-07

Susan K. Monette, Notary Public
My App't. Exp. 11-9-07

This plat of "OSBECK ADDITION", Wichita, Sedgwick County, Kansas has been submitted to and approved by the Wichita-Sedgwick County Metropolitan Area Planning Commission, Wichita, Kansas.
Dated this 24th day of March, 2005.
Wichita-Sedgwick County Metropolitan Area Planning Commission

Morris K. Dunlap, Chair

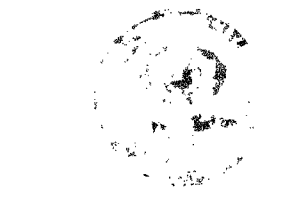
John E. Schlegel, Secretary



This plat approved and all dedications shown hereon accepted by the City Council of the City of Wichita, Kansas, this 8 day of August, 2005.

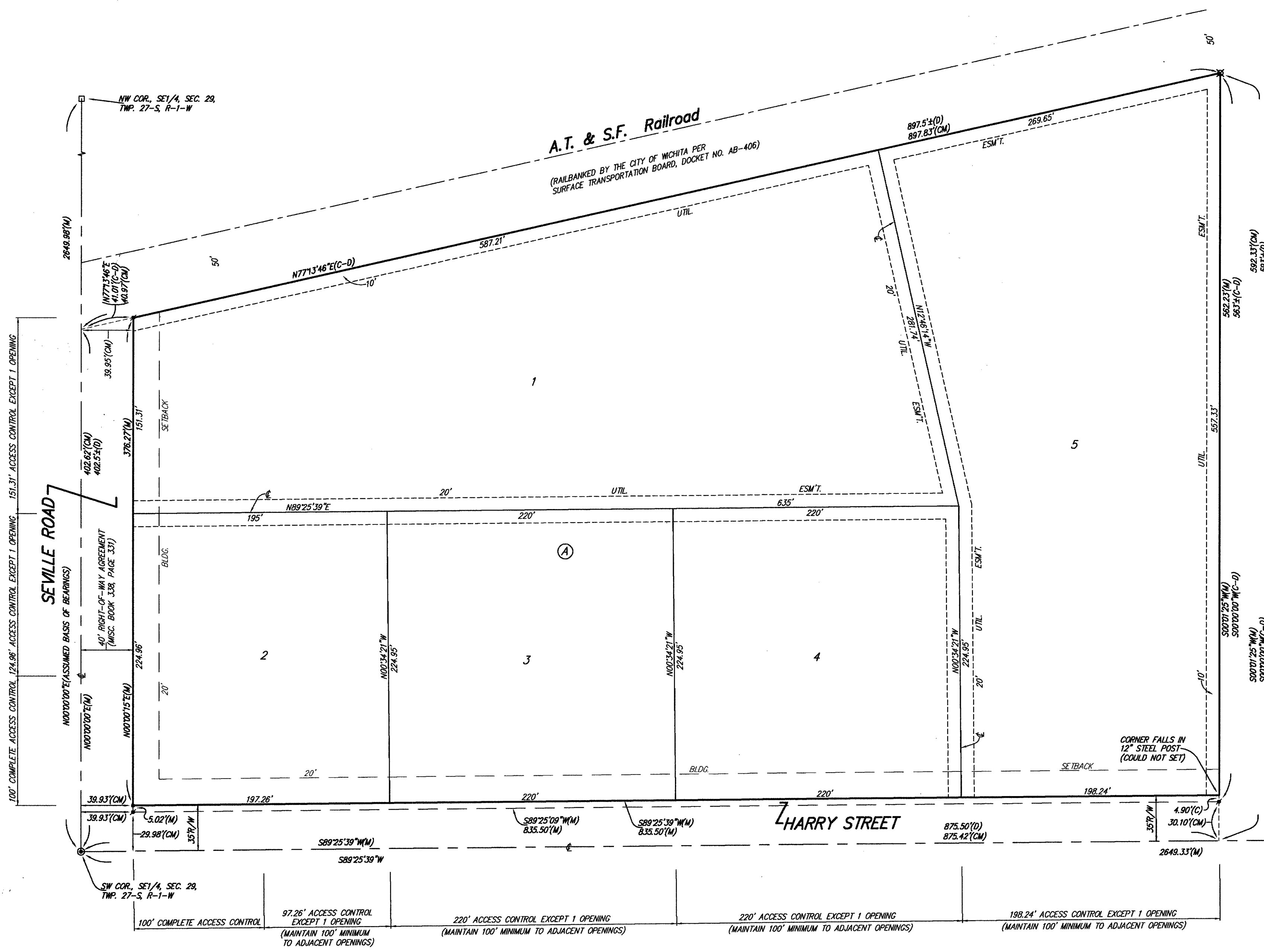
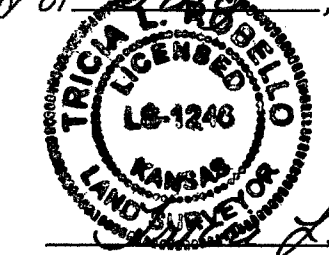
Carlos Mayans, Mayor

Karen Sublett, City Clerk



Reviewed in accordance with K.S.A. 58-2005 on this 25th day of August, 2005.

Tricia L. Robello, L.S. #1246
Deputy County Surveyor
Sedgwick County, Kansas



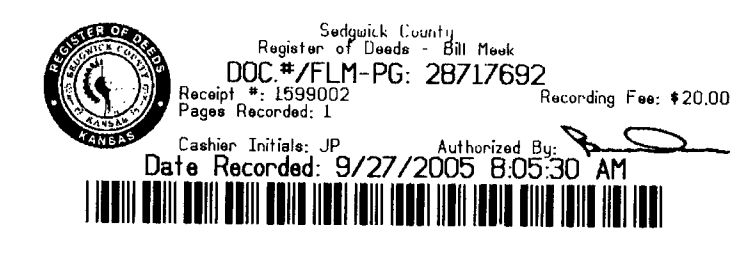
Entered on transfer record this 27th day of September, 2005.

Don Brace, County Clerk



State of Kansas) SS This is to certify that this plat has been filed for record in the office of the Register of Deeds, this 27th day of September, 2005 at 8:05:30 a clock A.M. and is duly recorded.

Bill Meek, Register of Deeds



Tonya Buckingham, Deputy