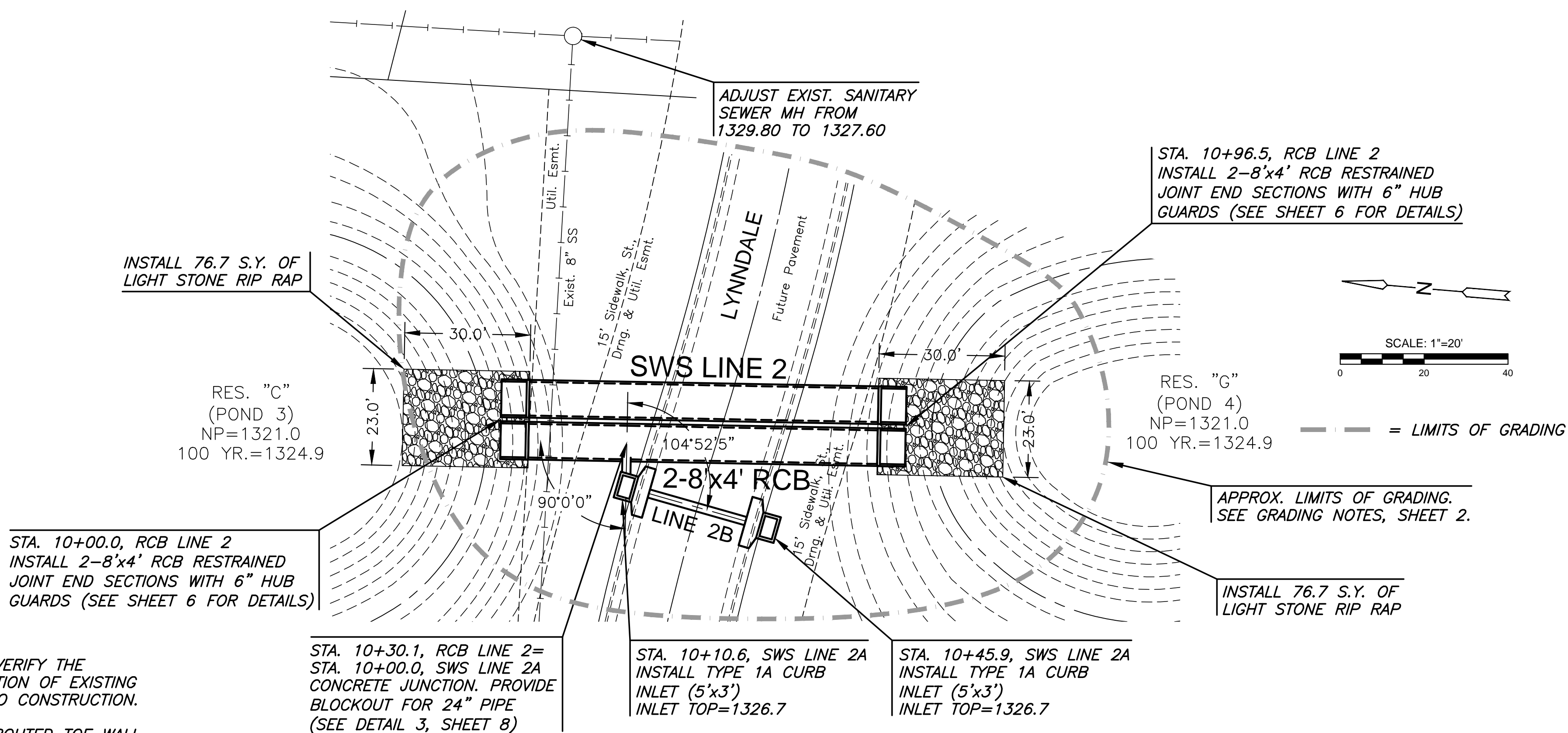


J:\PROJECTS\2018\1601010221 - PERFECTION, AUBURN LAKES - 16221 CAD\SH1505 CIVIL\SWSPART B\16221-06-4201-PTB.DWG
 PLOTTED: Wednesday, October 24, 2018 @ 09:53AM

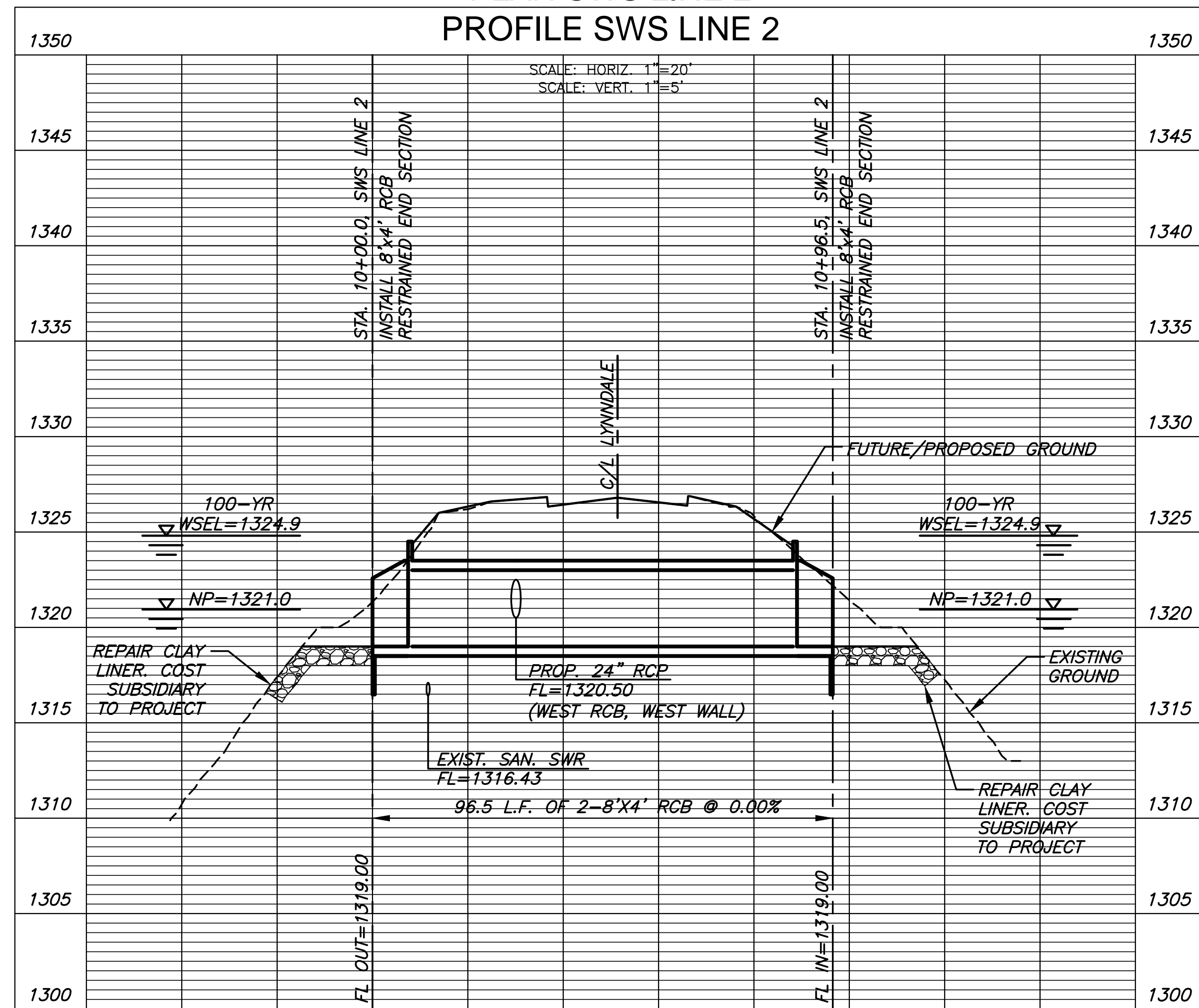
GENERAL NOTES

1. CONTRACTOR MUST VISIT THE SITE PRIOR TO BIDDING PROJECT.
2. CONTRACTOR SHALL RECONSTRUCT ANY REMOVED OR DAMAGED EXISTING POND LINER PER POND AND BENTONITE DETAILS. ONCE COMPLETE, EACH POND LINER SHALL BE CONTINUOUS AND FREE OF ANY GAPS. SEE GRADING DETAILS FOR INFORMATION.
3. EARTHWORK AND LINER RECONSTRUCTION SHALL BE CONSIDERED SUBSIDIARY TO RCB CONSTRUCTION.
4. CONTRACTOR SHALL APPLY A THIN-SET MORTAR FINISH TO ALL EXPOSED CONCRETE SURFACES. COLOR TO BE DETERMINED. CONTRACTOR SHALL PROVIDE A 10 S.F. MOCKUP FOR REVIEW AND APPROVAL BY LANDSCAPE ARCHITECT PRIOR TO CONSTRUCTION.
5. NO PERIMETER GROUTED TOW WALL REQUIRED FOR RIP RAP.

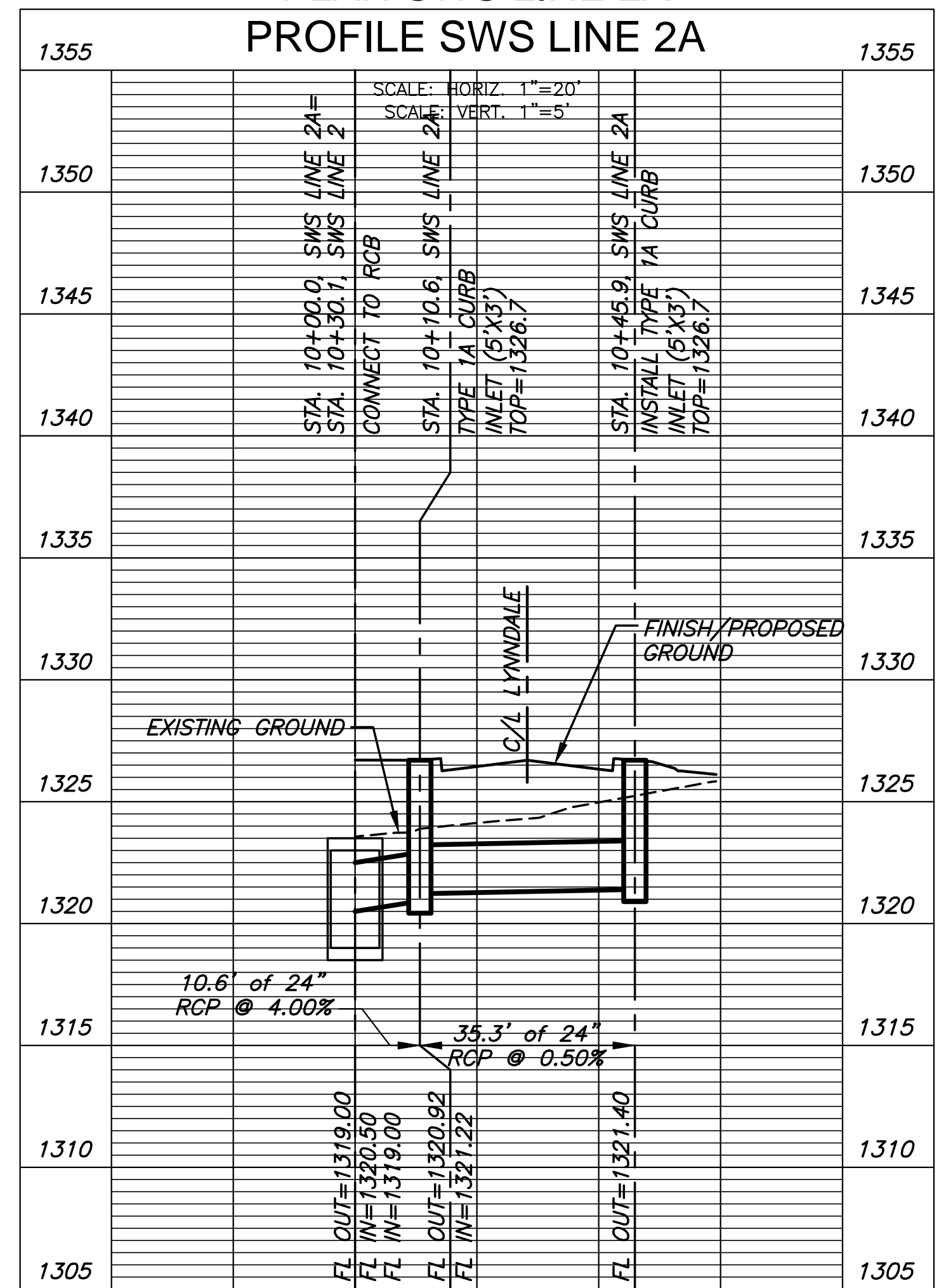
NOTES:
 CONTRACTOR TO VERIFY THE DEPTH AND LOCATION OF EXISTING UTILITIES PRIOR TO CONSTRUCTION.
 NO PERIMETER GROUTED TOE WALL REQUIRED FOR RIP RAP.



**PLAN SWS LINE 2
 PROFILE SWS LINE 2**



**PLAN SWS LINE 2A
 PROFILE SWS LINE 2A**



STORM WATER DRAIN PLANS FOR
AUBURN LAKES ADDITION
 PART B

©2018 MKEC Engineering All Rights Reserved
 www.mkec.com
 These drawings and their contents, including, but not limited to, all concepts, designs, & ideas are the exclusive property of MKEC Engineering (MKEC), and may not be used or reproduced in any way without the express consent of MKEC.

| SWS LINES 2 & 2A | | |
|------------------|-----------|---------|
| PROJECT NO. | 468-85308 | |
| DATE | OCT. 2018 | |
| SCALE | 1"=20' | |
| DESIGNED | DRAWN | CHECKED |
| DFL | BKS | JAG |
| NO. | REVISION | DATE |
| SHEET NO. | | |
| 5 OF 32 | | |