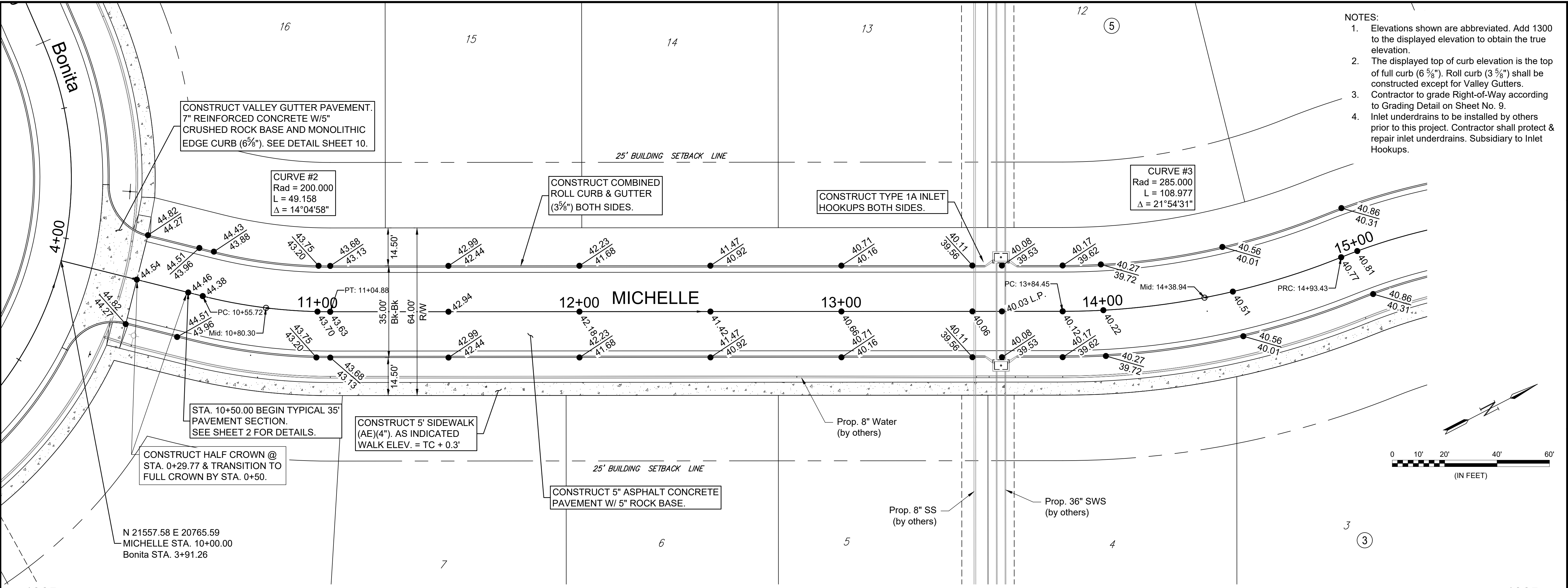


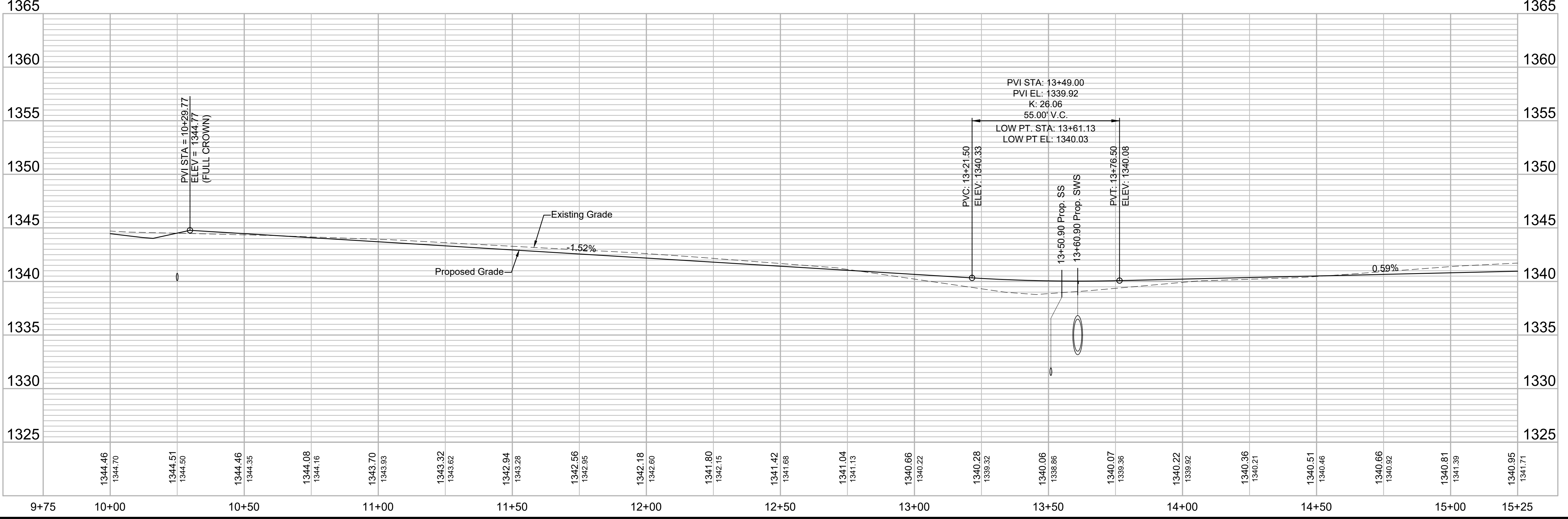
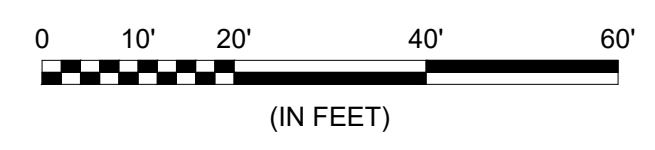
File: L:\2018\18267011 - Casa Bella Phase 5\Drawings\C3D\Plan\Michelle-1.dwg Last Save: 10/31/2018 10:52 AM Last saved by: MTDolechek
 Last plotted by: Dolechek, Mark T. Plot Date: 10/31/2018 11:26 AM Plotter used: None



- NOTES:
1. Elevations shown are abbreviated. Add 1300 to the displayed elevation to obtain the true elevation.
 2. The displayed top of curb elevation is the top of full curb (6 5/8"). Roll curb (3 5/8") shall be constructed except for Valley Gutters.
 3. Contractor to grade Right-of-Way according to Grading Detail on Sheet No. 9.
 4. Inlet underdrains to be installed by others prior to this project. Contractor shall protect & repair inlet underdrains. Subsidiary to Inlet Hookups.

© 2018 GARVER, LLC
 THIS DOCUMENT, ALONG WITH THE IDEAS AND DESIGNS CONVEYED HEREIN, SHALL BE CONSIDERED INSTRUMENTS OF PROFESSIONAL SERVICE AND ARE PROPERTY OF GARVER, LLC. ANY USE, REPRODUCTION, OR DISTRIBUTION OF THIS DOCUMENT, ALONG WITH THE IDEAS AND DESIGNS CONTAINED HEREIN, IS PROHIBITED UNLESS AUTHORIZED IN WRITING BY GARVER, LLC OR EXPLICITLY ALLOWED IN THE GOVERNING PROFESSIONAL SERVICES AGREEMENT FOR THIS WORK.

MARK T. DOLECHEK
 LICENSED PROFESSIONAL ENGINEER
 KANSAS
 25299
 Digitally Signed 10/31/2018



REV.	DATE	DESCRIPTION

CITY OF WICHITA
 WICHITA, KANSAS
 CASA BELLA 2nd ADD.
 PHASE 5 - PAVING

Michelle Plan & Profile (1 of 2)

JOB NO.: 18267011
 DATE: SEPT. 2018
 DESIGNED BY: MTD
 DRAWN BY: DRS

BAR IS ONE INCH ON ORIGINAL DRAWING
 IF NOT ONE INCH ON THIS SHEET, ADJUST SCALES ACCORDINGLY.

DRAWING NUMBER

SHEET NUMBER **8** OF **14**