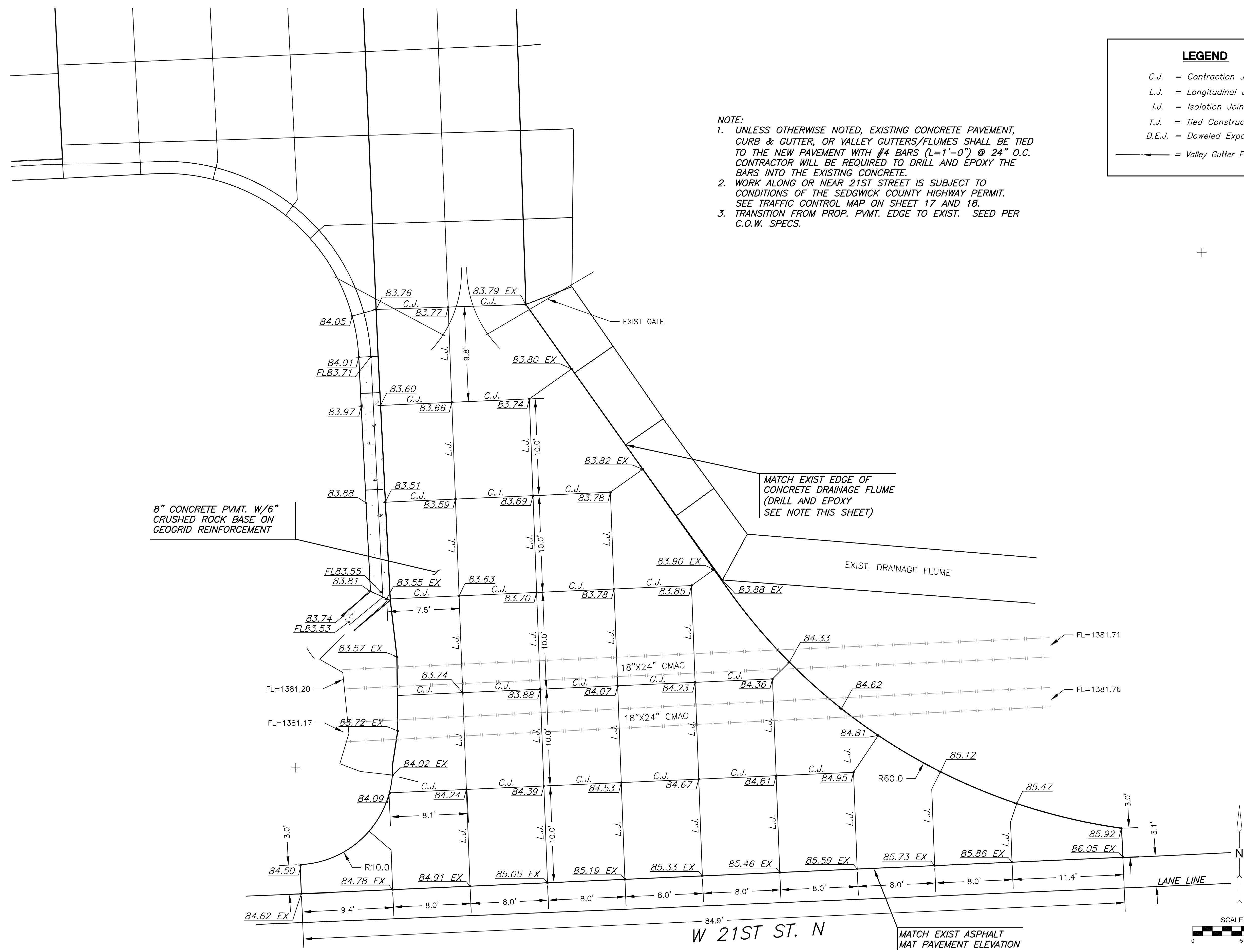


J:\PROJECTS\2018\1601010411_COW_ONCALLSERVICES_160411 CAD CHENEY PUMP STATION\SHOTS\160411 CAD_DRIVE_APPROACHES.DWG
 PLOTTED: Tuesday, November 06, 2018 @ 08:15PM



- NOTE:**
- UNLESS OTHERWISE NOTED, EXISTING CONCRETE PAVEMENT, CURB & GUTTER, OR VALLEY GUTTERS/FLUMES SHALL BE TIED TO THE NEW PAVEMENT WITH #4 BARS (L=1'-0") @ 24" O.C. CONTRACTOR WILL BE REQUIRED TO DRILL AND EPOXY THE BARS INTO THE EXISTING CONCRETE.
 - WORK ALONG OR NEAR 21ST STREET IS SUBJECT TO CONDITIONS OF THE SEDGWICK COUNTY HIGHWAY PERMIT. SEE TRAFFIC CONTROL MAP ON SHEET 17 AND 18.
 - TRANSITION FROM PROP. PVMT. EDGE TO EXIST. SEED PER C.O.W. SPECS.

LEGEND

- C.J. = Contraction Joint
- L.J. = Longitudinal Joint
- I.J. = Isolation Joint
- T.J. = Tied Construction Joint
- D.E.J. = Doweled Expansion Joint

—> = Valley Gutter Flow Direction



GRADING PLANS FOR
CHENEY PUMP STATION
 PAVEMENT REPLACEMENT & REPAIR

©2018 MKEC Engineering All Rights Reserved www.mkec.com
 These drawings and their contents, including, but not limited to, all concepts, designs, & ideas are the exclusive property of MKEC Engineering (MKEC), and may not be used or reproduced in any way without the express consent of MKEC.

EAST DRIVE APPROACH PLAN

PROJECT NO.	448-90934	
DATE	NOV. 2018	
SCALE	1"=5'	
DESIGNED	DRAWN	CHECKED
SLF	CRM	SLF

NO.	REVISION	DATE