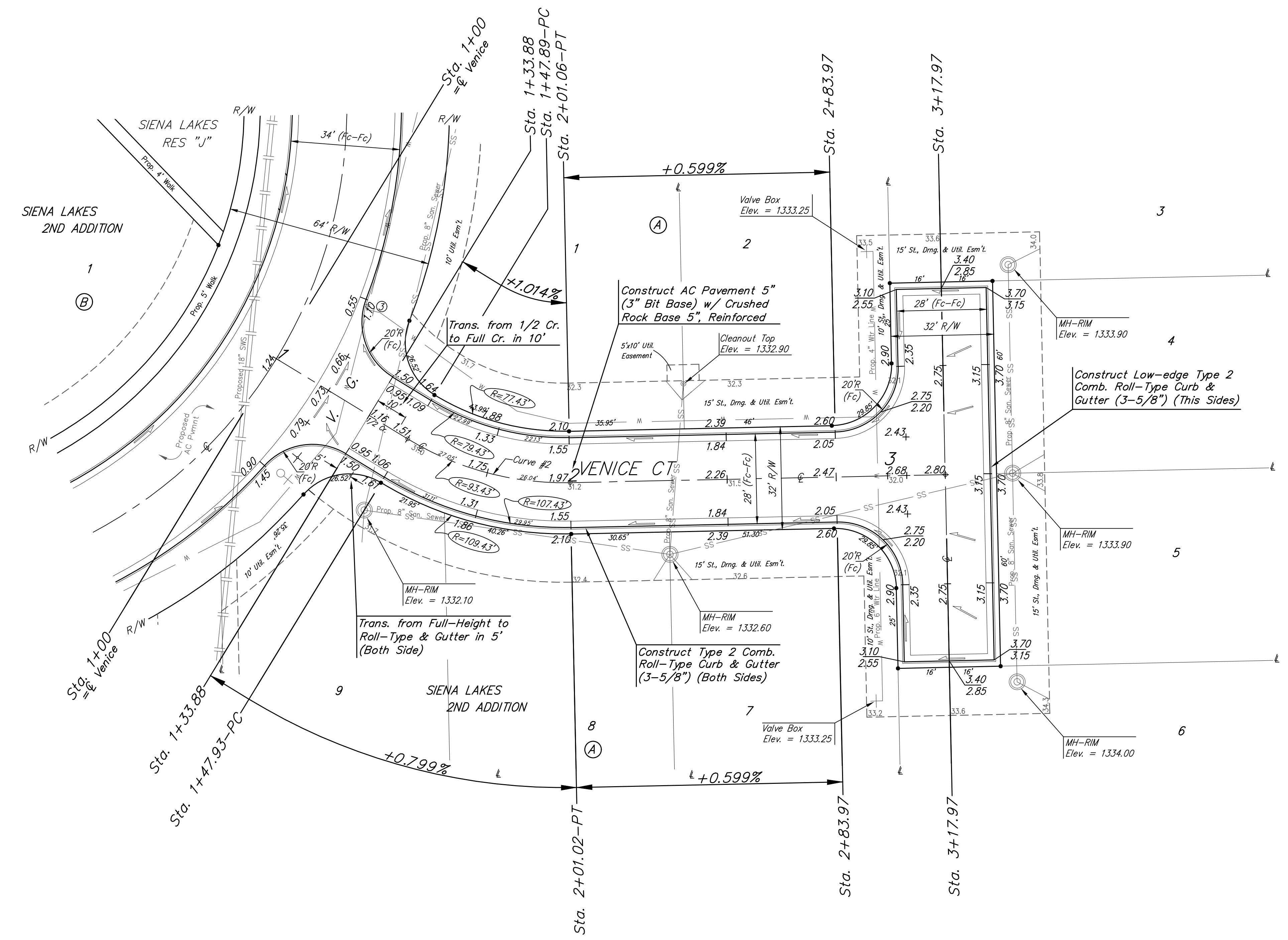
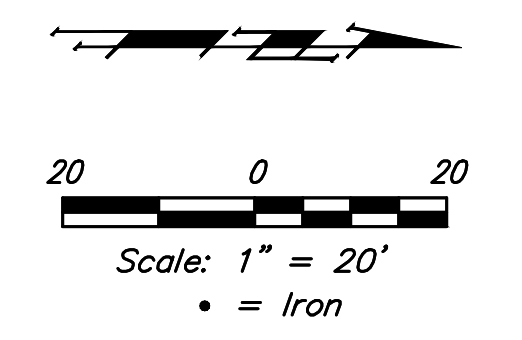


**BENCHMARKS:**  
 Chiseled square at the end of the top of curb at the southeast corner of Ridge Port and 37th ST N.  
 Elev. = 1333.05 NAVD88

Chiseled square on the south side of curb inlet on the east side of Lakeway ST  
 Elev. = 1329.58 NAVD88



Roll type curb & gutter to be constructed on the pavement on this sheet.  
 Top of curb elevation are given for full height curb.

Curve #2  
 Curve Data Based on Centerline

Rad. = 93.29' Delta = 32°36'19" Tangent = 27.28'  
 Arc = 53.09' L.C. = 52.38' Def./Ft. = 18.42453 Min.

Station	Arc	Face Chord Length		Defl.	Total Defl.
		8' Left	8' Right		
1+47.93	-	-	-	0'00'00"	0'00'00"
1+50.00	2.07'	1.58'	2.56'	0'38'08"	0'38'08"
1+75.00	25.00'	19.05'	30.80'	7'40'37"	8'18'45"
2+00.00	25.00'	19.05'	30.80'	7'40'37"	15'59'22"
2+01.02	1.02'	0.78'	1.26'	0'18'48"	16'18'10"

	Siena Lakes 2nd Addition - Phase I	
	<b>VENICE CT</b> Lot 10-Lot 18, Block 2	
Baughman Company, P.A. 315 Ellis St. Wichita, KS 67211 P 316-262-7271 F 316-262-0149 ENGINEERING   SURVEYING   PLANNING   LANDSCAPE ARCHITECTURE		
PROJECT NUMBER <b>472-85177</b>	DESIGN AEG	DRAWN JAK
REVISIONS:	APPROVED	DATE 11/06/18
SCALE Noted		SHEET <b>11 OF 31</b>