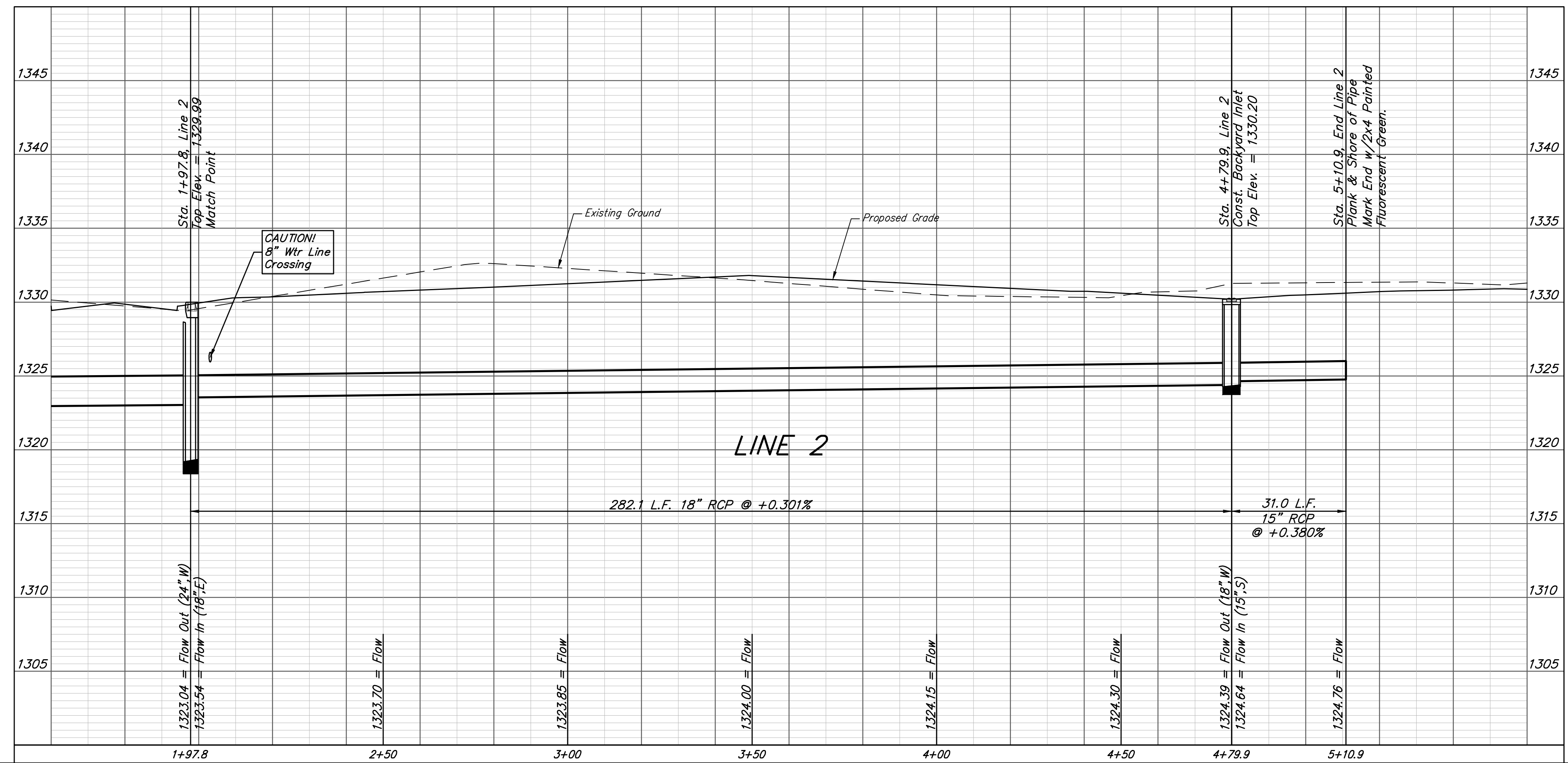
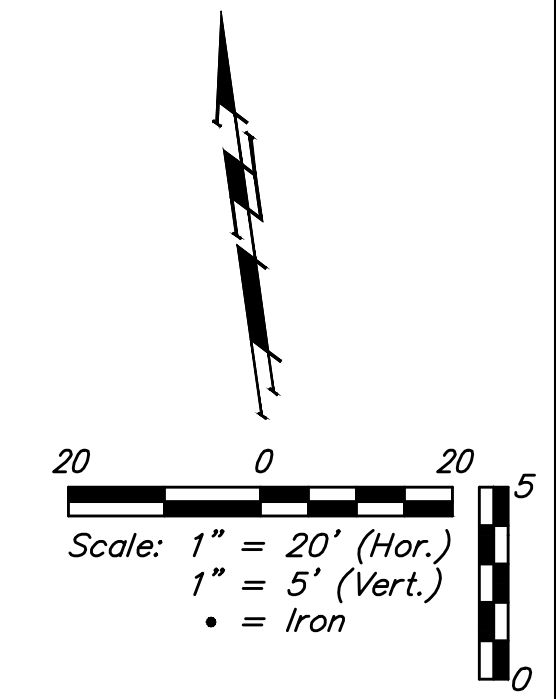
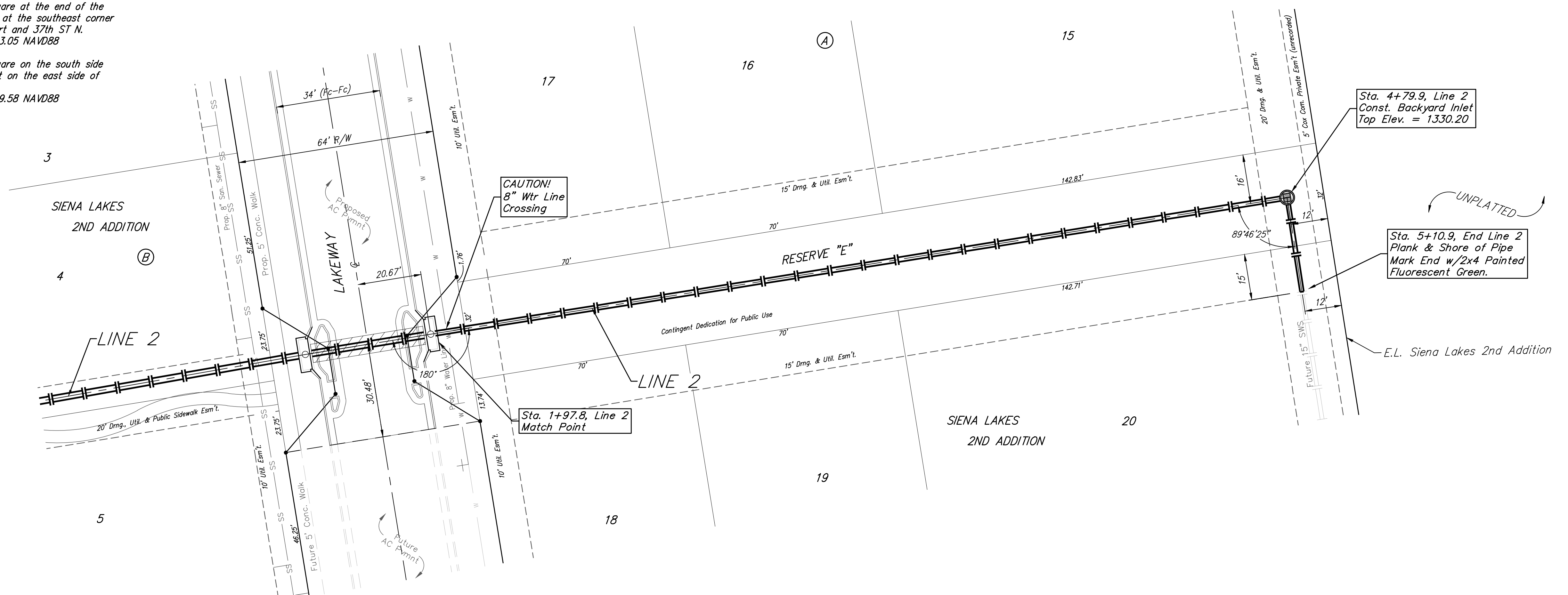


**BENCHMARKS:**  
 Chiseled square at the end of the top of curb at the southeast corner of Ridge Port and 37th ST N.  
 Elev. = 1333.05 NAVD88

Chiseled square on the south side of curb inlet on the east side of Lakeway ST  
 Elev. = 1329.58 NAVD88



<b>Baughman</b>		Siena Lakes 2nd Addition - Phase I	
<b>LINE 2</b>		Storm Water Sewer Improvements	
Baughman Company, P.A. 315 Ellis St. Wichita, KS 67211 P 316-262-7271 F 316-262-0149 ENGINEERING   SURVEYING   PLANNING   LANDSCAPE ARCHITECTURE			
PROJECT NUMBER 472-85177	DESIGN AEG	DRAWN JAK	APPROVED DATE 11/06/18
REVISIONS:	SCALE Noted SHEET <b>15 OF 31</b>		