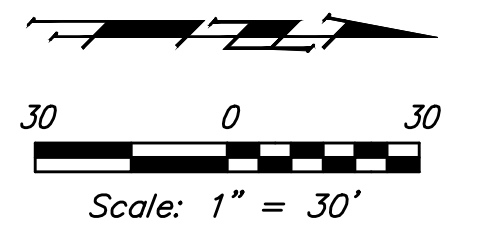
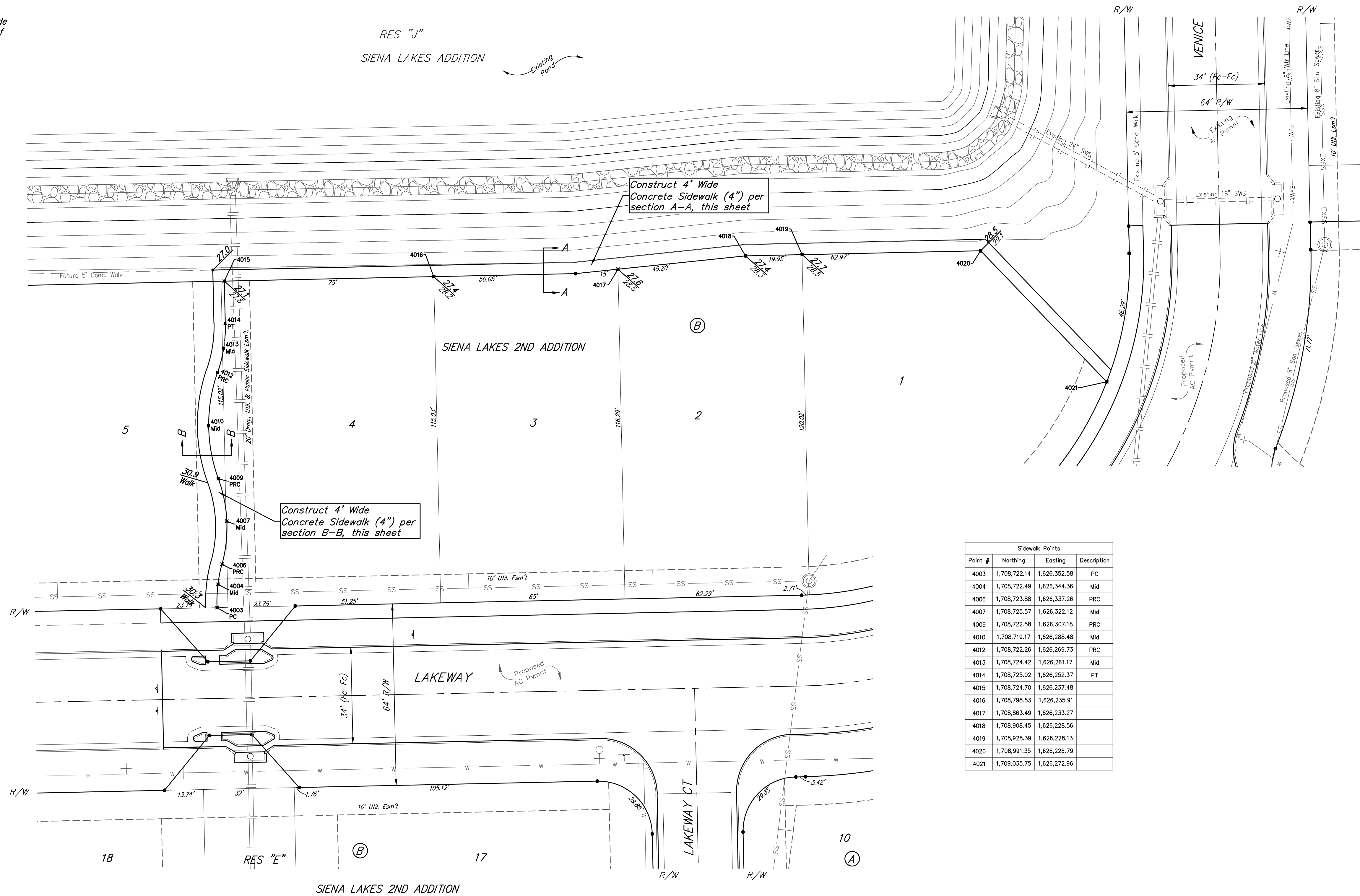
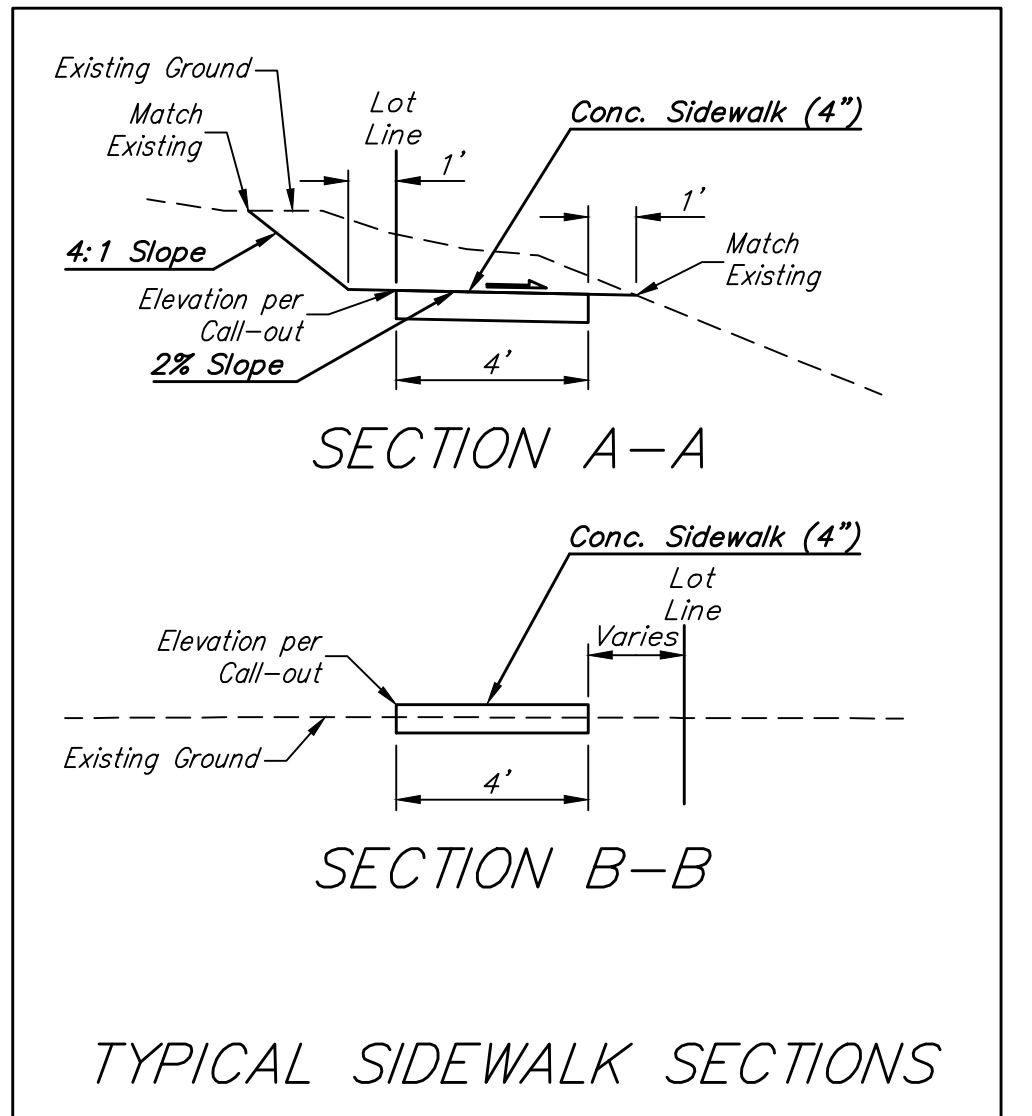
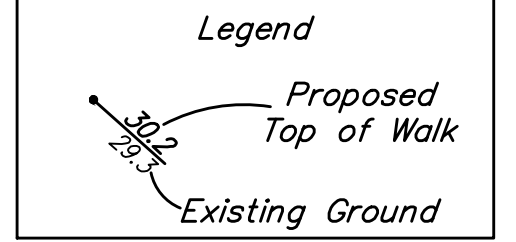


BENCHMARKS:
 Chiseled square at the end of the top of curb at the southeast corner of Ridge Port and 37th ST N.
 Elev. = 1333.05 NAVD88

Chiseled square on the south side of curb inlet on the east side of Lakeway ST.
 Elev. = 1329.58 NAVD88



Approximate Sidewalk Grading Quantities: (For Information Only)
 Excavation: 63 C.Y.
 Fill: - C.Y.



Point #	Northing	Easting	Description
4003	1,708,722.14	1,626,352.58	PC
4004	1,708,722.49	1,626,344.36	Mid
4006	1,708,723.88	1,626,337.26	PRC
4007	1,708,725.57	1,626,322.12	Mid
4009	1,708,722.58	1,626,307.18	PRC
4010	1,708,719.17	1,626,288.48	Mid
4012	1,708,722.26	1,626,269.73	PRC
4013	1,708,724.42	1,626,261.17	Mid
4014	1,708,725.02	1,626,252.37	PT
4015	1,708,724.70	1,626,237.48	
4016	1,708,798.53	1,626,235.91	
4017	1,708,863.49	1,626,233.27	
4018	1,708,908.45	1,626,228.56	
4019	1,708,928.39	1,626,228.13	
4020	1,708,991.35	1,626,226.79	
4021	1,708,035.75	1,626,272.96	

Siena Lakes 2nd Addition - Phase I

SIDEWALK PLAN

Street / SWS Improvements

Baughman Company, P.A. 315 Ellis St. Wichita, KS 67211 P 316-262-7271 F 316-262-0149
 ENGINEERING | SURVEYING | PLANNING | LANDSCAPE ARCHITECTURE

PROJECT NUMBER 472-85177	DESIGN AEG	DRAWN JAK
REVISIONS:	APPROVED	DATE 11/06/18
	SCALE Noted	SHEET 17 OF 31

C:\Projects\Siena Lakes 2nd_1805\F317\Engineering\Phase I\STR_1804E994\STR PLANS.dwg