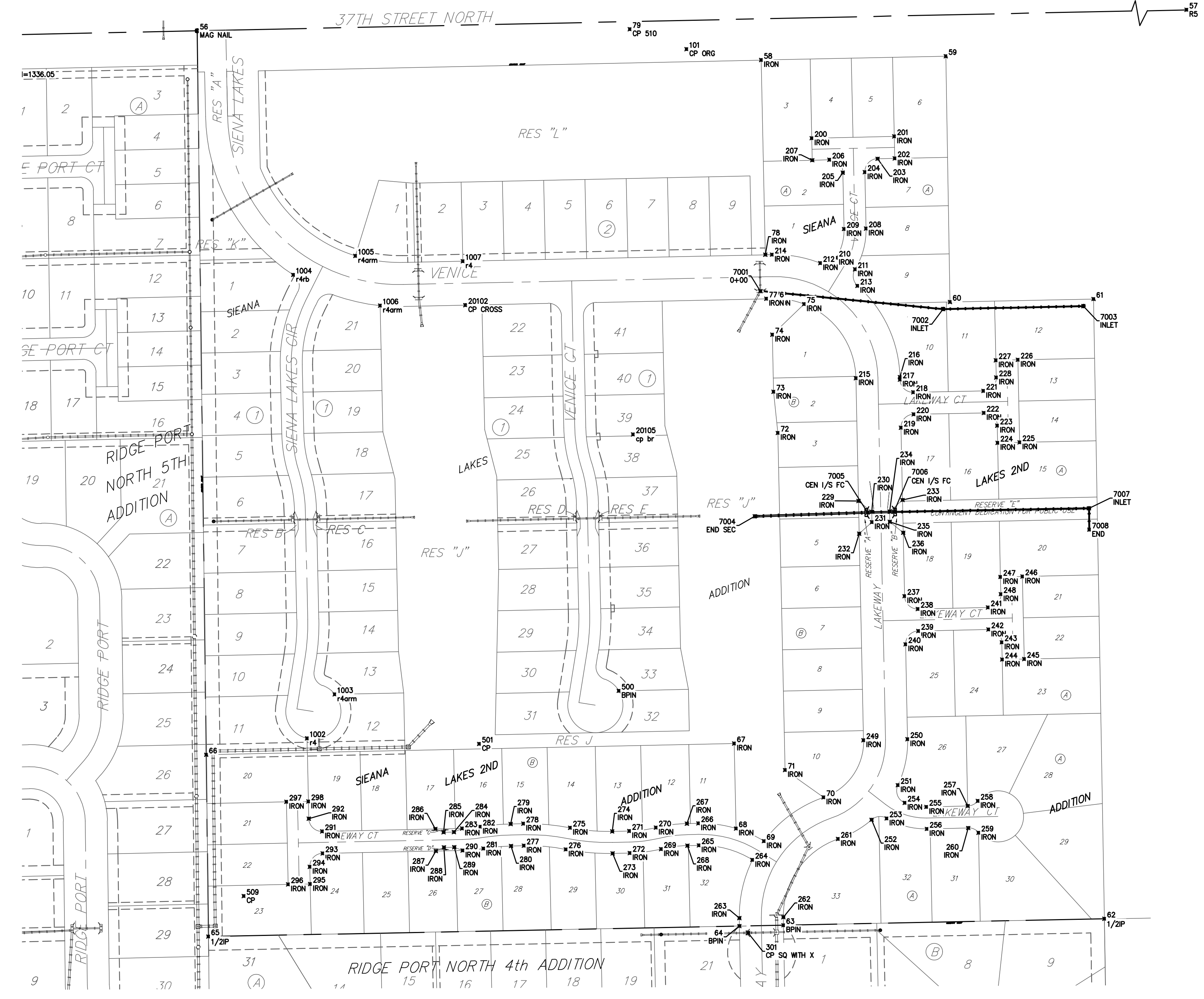
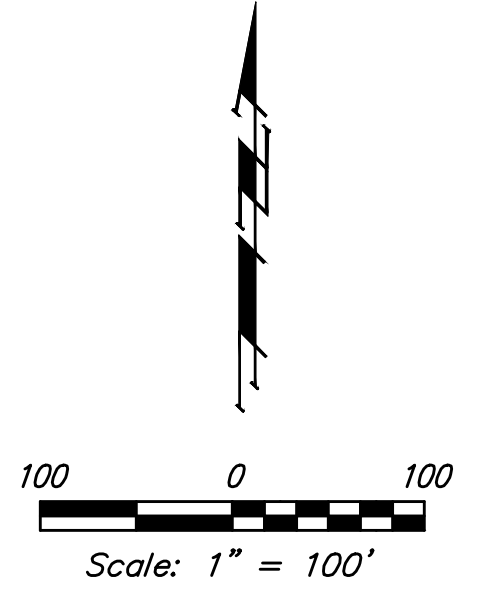


BENCHMARKS:
 Chiseled square at the end of the top of curb at the southeast corner of Ridge Port and 37th St N.
 Elev. = 1333.05 NAVD88

Chiseled square on the south side of curb inlet on the east side of Lakeway ST.
 Elev. = 1329.58 NAVD88

SWS Points			
Point #	Northing	Easting	Description
7001	1,709,054.65	1,626,209.35	O+00
7002	1,709,028.65	1,626,475.11	INLET
7003	1,709,032.92	1,626,678.90	INLET
7004	1,708,727.50	1,626,201.19	END SEC
7005	1,708,732.99	1,626,365.19	CEN 1/5 FC
7006	1,708,733.80	1,626,403.51	CEN 1/5 FC
7007	1,708,739.07	1,626,687.07	INLET
7008	1,708,708.07	1,626,687.62	END

Sidewalk Points				Sidewalk Points			
Point #	Northing	Easting	Description	Point #	Northing	Easting	Description
56	1,709,432.97	1,627,390.63	MAG NAIL	248	1,708,614.33	1,626,558.92	IRON
57	1,709,488.31	1,627,982.48	RS	249	1,708,402.10	1,626,359.37	IRON
58	1,709,390.46	1,626,210.60	IRON	250	1,708,403.46	1,626,423.36	IRON
59	1,709,396.14	1,626,478.94		251	1,708,336.64	1,626,409.24	IRON
60	1,709,038.86	1,626,485.13		252	1,708,286.44	1,626,371.07	IRON
61	1,709,043.23	1,626,693.72		253	1,708,288.40	1,626,393.09	IRON
62	1,708,142.50	1,626,709.57	1/2IP	254	1,708,311.06	1,626,419.20	IRON
63	1,708,133.19	1,626,242.96	BPIN	255	1,708,305.15	1,626,450.75	IRON
64	1,708,131.97	1,626,178.94	BPIN	256	1,708,273.16	1,626,451.43	IRON
65	1,708,116.72	1,625,406.99	1/2IP	257	1,708,306.43	1,626,510.80	IRON
66	1,708,380.91	1,625,403.85		258	1,708,313.87	1,626,525.48	IRON
67	1,708,397.32	1,626,171.38	IRON	259	1,708,267.63	1,626,526.46	IRON
68	1,708,273.70	1,626,174.02	IRON	260	1,708,274.44	1,626,511.48	IRON
69	1,708,255.43	1,626,214.61	IRON	261	1,708,258.46	1,626,322.27	IRON
70	1,708,318.97	1,626,301.41	IRON	262	1,708,144.74	1,626,242.73	IRON
71	1,708,358.68	1,626,245.30	IRON	263	1,708,143.57	1,626,178.74	IRON
72	1,708,848.57	1,626,234.84	IRON	264	1,708,228.16	1,626,197.86	IRON
73	1,708,908.45	1,626,228.56	IRON	265	1,708,249.19	1,626,119.99	IRON
74	1,708,991.35	1,626,226.79	IRON	266	1,708,281.18	1,626,119.24	IRON
75	1,709,035.75	1,626,272.96	IRON	267	1,708,280.79	1,626,102.60	IRON
76	1,709,043.75	1,626,227.67	IRON	268	1,708,248.80	1,626,103.34	IRON
77	1,709,043.54	1,626,218.01	IRON	269	1,708,243.85	1,626,065.02	IRON
78	1,709,107.53	1,626,216.65	IRON	270	1,708,274.97	1,626,057.61	IRON
79	1,709,435.27	1,626,019.52	CP S10	271	1,708,270.01	1,626,018.88	IRON
101	1,709,406.33	1,626,102.00	CP ORG	272	1,708,238.02	1,626,019.56	IRON
102	1,709,034.28	1,625,780.64	CP CROSS	273	1,708,237.49	1,625,994.68	IRON
200	1,709,276.95	1,626,284.14	IRON	274	1,708,269.48	1,625,994.00	IRON
201	1,709,279.49	1,626,404.11	IRON	275	1,708,274.81	1,625,932.89	IRON
202	1,709,247.50	1,626,404.79	IRON	276	1,708,243.42	1,625,926.68	IRON
203	1,709,246.97	1,626,379.79	IRON	277	1,708,248.75	1,625,865.57	IRON
204	1,709,227.57	1,626,361.20	IRON	278	1,708,280.74	1,625,864.89	IRON
205	1,709,226.89	1,626,329.21	IRON	279	1,708,280.35	1,625,846.30	IRON
206	1,709,245.48	1,626,309.81	IRON	280	1,708,248.36	1,625,846.98	IRON
207	1,709,244.95	1,626,284.82	IRON	281	1,708,244.67	1,625,806.98	IRON
208	1,709,145.64	1,626,362.94	IRON	282	1,708,276.24	1,625,801.80	IRON
209	1,709,144.96	1,626,330.95	IRON	283	1,708,273.85	1,625,775.88	IRON
210	1,709,103.06	1,626,319.65	IRON	284	1,708,268.60	1,625,763.99	IRON
211	1,709,086.39	1,626,346.97	IRON	285	1,708,268.28	1,625,749.00	IRON
212	1,709,095.26	1,626,296.51	IRON	286	1,708,273.03	1,625,736.89	IRON
213	1,709,062.25	1,626,350.62	IRON	287	1,708,241.03	1,625,737.57	IRON
214	1,709,107.73	1,626,226.30	IRON	288	1,708,246.29	1,625,749.46	IRON
215	1,708,928.23	1,626,348.21	IRON	289	1,708,246.60	1,625,764.46	IRON
216	1,708,929.59	1,626,412.20	IRON	290	1,708,241.86	1,625,776.56	IRON
217	1,708,926.17	1,626,412.27	IRON	291	1,708,269.54	1,625,572.39	IRON
218	1,708,907.58	1,626,431.67	IRON	292	1,708,288.13	1,625,553.00	IRON
219	1,708,856.18	1,626,413.75	IRON	293	1,708,237.54	1,625,573.07	IRON
220	1,708,875.58	1,626,432.35	IRON	294	1,708,218.14	1,625,554.48	IRON
221	1,708,909.74	1,626,533.65	IRON	295	1,708,193.15	1,625,555.01	IRON
222	1,708,877.75	1,626,534.32	IRON	296	1,708,192.47	1,625,523.02	IRON
223	1,708,859.15	1,626,553.72	IRON	297	1,708,312.44	1,625,520.47	IRON
224	1,708,834.16	1,626,554.25	IRON	298	1,708,313.12	1,625,552.46	IRON
225	1,708,834.84	1,626,586.25	IRON	301	1,708,122.02	1,626,191.52	CP SQ WITH X
226	1,708,954.81	1,626,583.70	IRON	500	1,708,473.86	1,626,003.64	BPIN
227	1,708,954.13	1,626,551.71	IRON	501	1,708,396.67	1,625,800.62	CP
228	1,708,929.14	1,626,552.24	IRON	509	1,708,175.57	1,625,458.41	CP
229	1,708,749.73	1,626,352.00	IRON	1002	1,708,404.76	1,625,550.36	r4
230	1,708,733.89	1,626,371.34	IRON	1003	1,708,468.64	1,625,590.55	r4arm
231	1,708,718.89	1,626,371.66	IRON	1004	1,709,078.26	1,625,530.46	r4b
232	1,708,702.24	1,626,353.01	IRON	1005	1,709,105.84	1,625,620.73	r4arm
233	1,708,751.09	1,626,415.98	IRON	1006	1,709,033.64	1,625,656.70	r4arm
234	1,708,734.44	1,626,397.33	IRON	1007	1,709,098.12	1,625,776.90	r4
235	1,708,719.44	1,626,397.65	IRON	10475	1,709,375.89	1,625,091.07	PLAT BM=1336.05
236	1,708,703.60	1,626,416.99	IRON	20102	1,709,034.28	1,625,780.64	CP CROSS
237	1,708,611.36	1,626,418.95	IRON	20105	1,708,846.41	1,626,024.39	cp br
238	1,708,592.77	1,626,438.35	IRON				
239	1,708,560.77	1,626,439.03	IRON				
240	1,708,541.37	1,626,420.43	IRON				
241	1,708,594.93	1,626,540.32	IRON				
242	1,708,562.94	1,626,541.00	IRON				
243	1,708,544.34	1,626,560.40	IRON				
244	1,708,519.35	1,626,560.93	IRON				
245	1,708,520.03	1,626,592.92	IRON				
246	1,708,640.00	1,626,590.38	IRON				
247	1,708,639.32	1,626,558.39	IRON				



Baughman Siena Lakes 2nd Addition - Phase I
COORDINATES
 Street / SWS Improvements

Baughman Company, P.A. 315 Ellis St. Wichita, KS 67211 P 316-262-7271 F 316-262-0149
 ENGINEERING | SURVEYING | PLANNING | LANDSCAPE ARCHITECTURE

PROJECT NUMBER 472-85177	DESIGN NBW	DRAWN JAK
REVISIONS:	APPROVED	DATE 11/06/18
	SCALE Noted	SHEET 30 OF 31

C:\Projects\Siena Lakes 2nd_1805P317_Engineering\Phase I\STR_1804E994\STR PLANS.dwg