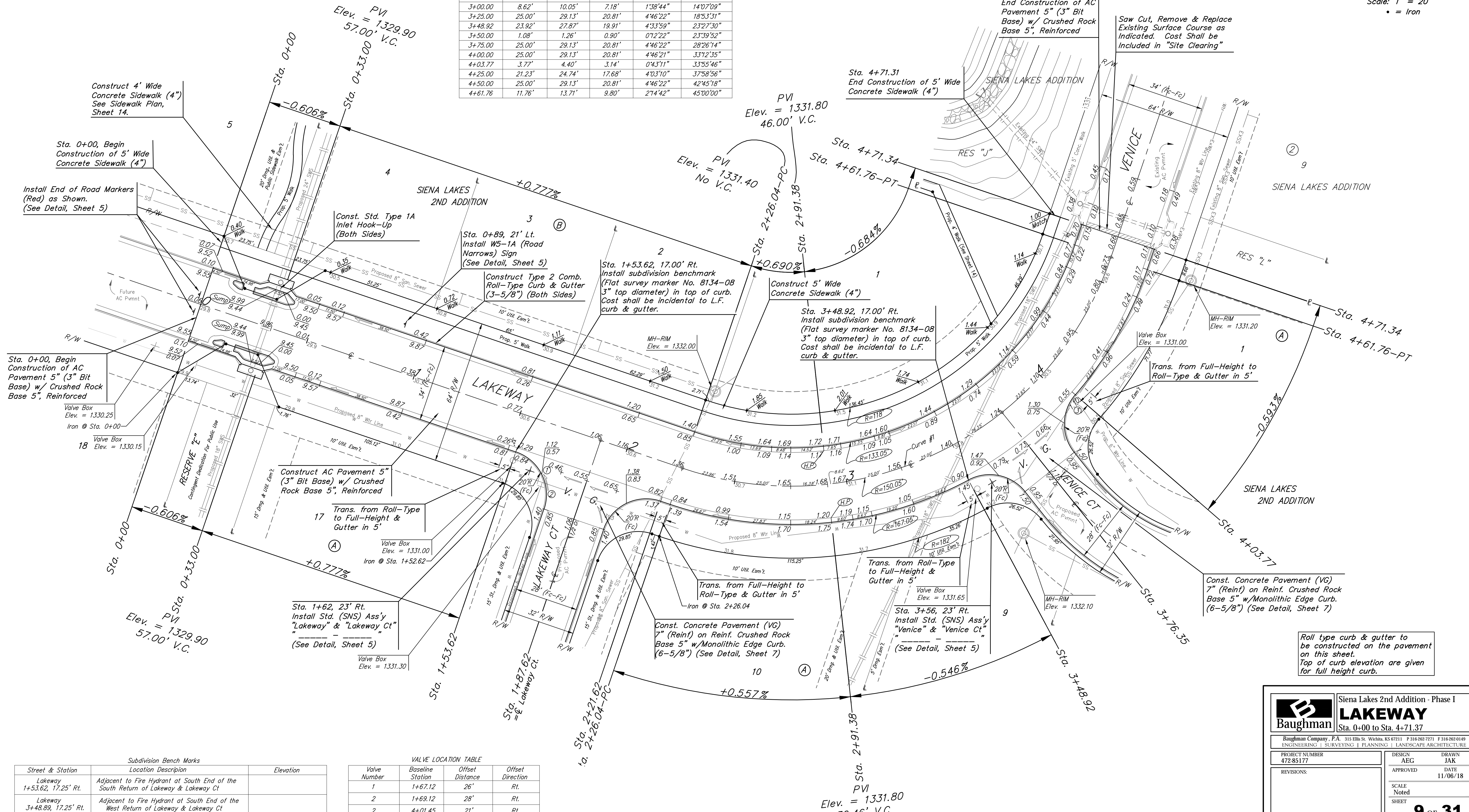
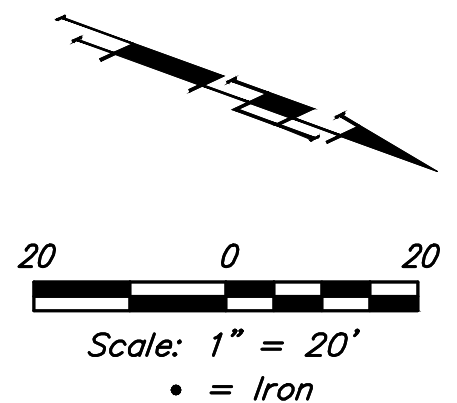


BENCHMARKS:
 Chiseled square at the end of the top of curb at the southeast corner of Ridge Port and 37th ST N.
 Elev. = 1333.05 NAVD88

Chiseled square on the south side of curb inlet on the east side of Lakeway ST
 Elev. = 1329.58 NAVD88

Curve #1
 Curve Data Based on Centerline
 Rad. = 150.05' Delta = 90°00'00" Tangent = 150.05'
 Arc = 235.72' L.C. = 212.20' Def./Ft. = 11.45427 Min.

Station	Arc	Face Chord Length		Defl.	Total Defl.
		8' Left	8' Right		
2+26.04	-	-	-	0'00"00"	0'00"00"
2+50.00	23.96'	27.92'	19.94'	4'34"27"	4'34"27"
2+75.00	25.00'	29.13'	20.81'	4'46"21"	9'20"48"
2+91.38	16.38'	19.10'	13.64'	3'07"37"	12'28'25"
3+00.00	8.62'	10.05'	7.18'	1'38"44"	14'07'09"
3+25.00	25.00'	29.13'	20.81'	4'46"22"	18'53'31"
3+48.92	23.92'	27.87'	19.91'	4'33"59"	23'27'30"
3+50.00	1.08'	1.26'	0.90'	0'12"22"	23'39'52"
3+75.00	25.00'	29.13'	20.81'	4'46"22"	28'26'14"
4+00.00	25.00'	29.13'	20.81'	4'46"21"	33'12'35"
4+03.77	3.77'	4.40'	3.14'	0'43"11"	33'55'46"
4+25.00	21.23'	24.74'	17.68'	4'03'10"	37'58'56"
4+50.00	25.00'	29.13'	20.81'	4'46"22"	42'45'18"
4+61.76	11.76'	13.71'	9.80'	2'14"42"	45'00'00"



Subdivision Bench Marks

Street & Station	Location Description	Elevation
Lakeway 1+53.62, 17.25' Rt.	Adjacent to Fire Hydrant at South End of the South Return of Lakeway & Lakeway Ct	
Lakeway 3+48.89, 17.25' Rt.	Adjacent to Fire Hydrant at South End of the West Return of Lakeway & Lakeway Ct	

VALVE LOCATION TABLE

Valve Number	Baseline Station	Offset Distance	Offset Direction
1	1+67.12	26'	Rt.
2	1+69.12	28'	Rt.
2	4+01.45	21'	Rt.

Baughman Siena Lakes 2nd Addition - Phase I
LAKEWAY
 Sta. 0+00 to Sta. 4+71.37

Baughman Company, P.A. 315 Ellis St. Wichita, KS 67211 P 316-262-7271 F 316-262-0149
 ENGINEERING | SURVEYING | PLANNING | LANDSCAPE ARCHITECTURE

PROJECT NUMBER 472-85177	DESIGN AEG	DRAWN JAK
REVISIONS:	APPROVED	DATE 11/06/18
	SCALE Noted	SHEET 9 OF 31

C:\Projects\Siena Lakes 2nd_1805\PI377\Engineering\Phase I\STR_1804\5994\STR PLANS.dwg