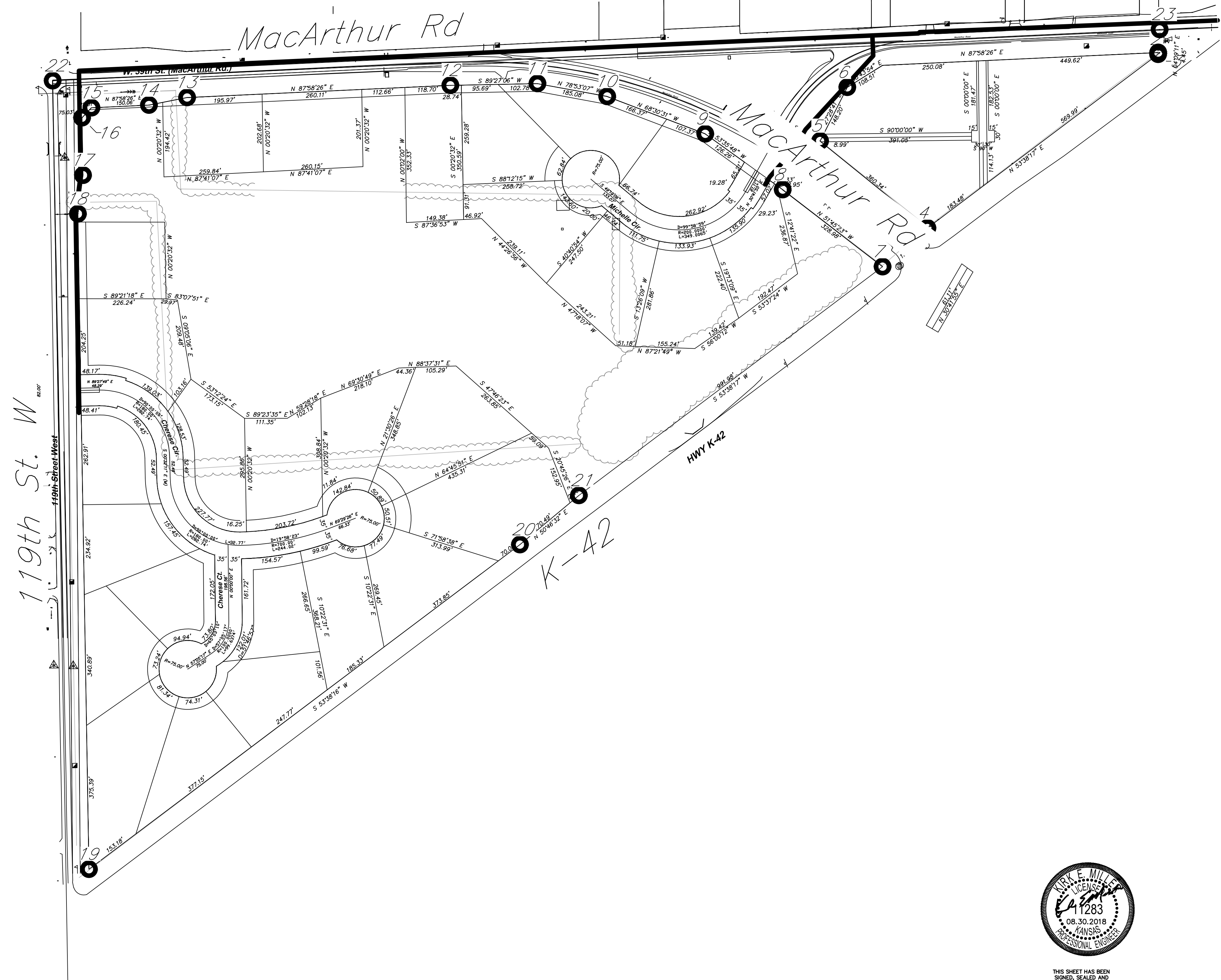
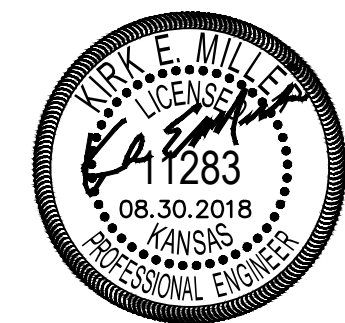


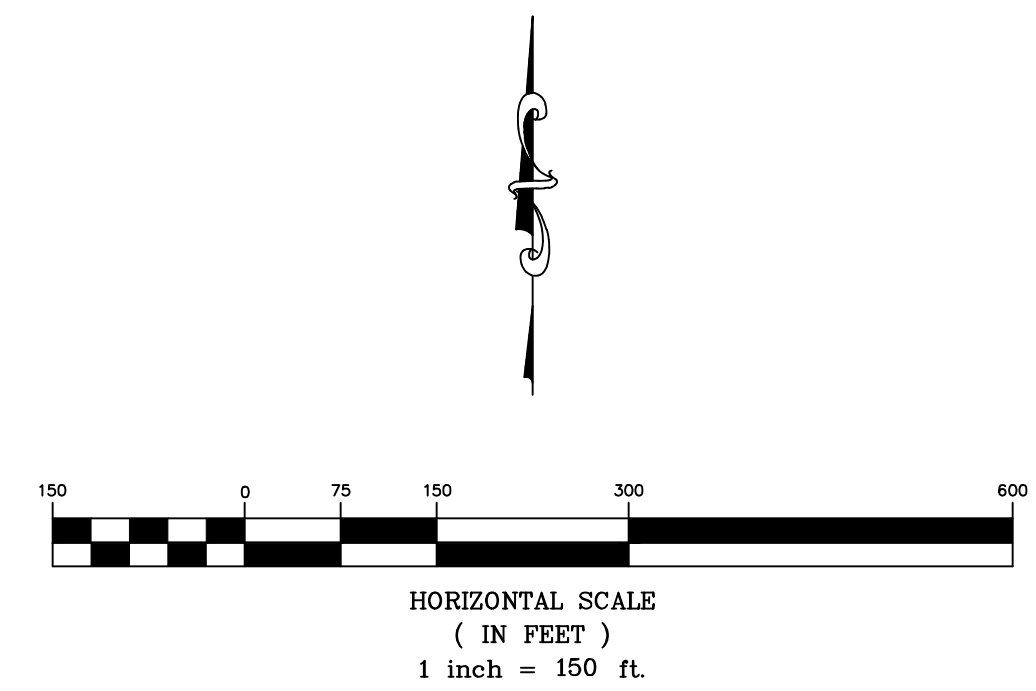
CHERESE WOODS ADDITION
TO SEDGWICK COUNTY, KANSAS



Point Table			
Point #	Northing	Easting	Description
10	1661404.6474	1609105.7793	Control Point
2	1661514.7185	1610542.8961	Control Point
3	1661519.2239	1610543.2531	Control Point
4	1661061.4558	1609941.1326	Control Point
5	1661288.3479	1609661.1953	Control Point
6	1661428.5890	1609732.1962	Control Point
7	1660960.8032	1609824.1168	Control Point
8	1661161.6089	1609563.5311	Control Point
9	1661307.1484	1609361.5673	Control Point
11	1661438.3397	1608923.7918	Control Point
12	1661433.6832	1608696.6295	Control Point
13	1661401.8734	1608009.9250	Control Point
14	1661382.2398	1607910.2426	Control Point
15	1661375.2958	1607760.3385	Control Point
16	1661349.1313	1607735.7772	Control Point
17	1661199.0879	1607738.3131	Control Point
18	1661098.3646	1607725.0133	Control Point
19	1659388.9395	1607753.9051	Control Point
20	1660235.6642	1608878.0248	Control Point
21	1660363.9815	1609031.7607	Control Point
22	1661445.6882	1607659.1345	Section Corner
23	1661579.4600	1610546.9658	Section Corner



THIS SHEET HAS BEEN
SIGNED, SEALED AND
DATED ELECTRONICALLY



K-42 Waterline
Control Map
Wichita, Kansas

	PROJECT NUMBER 448-90885			SHEET 2.0
	KEM NO. 18002	FILE	DATE 05/2018	
DESIGN KM	DRAWN SS	REVISED		