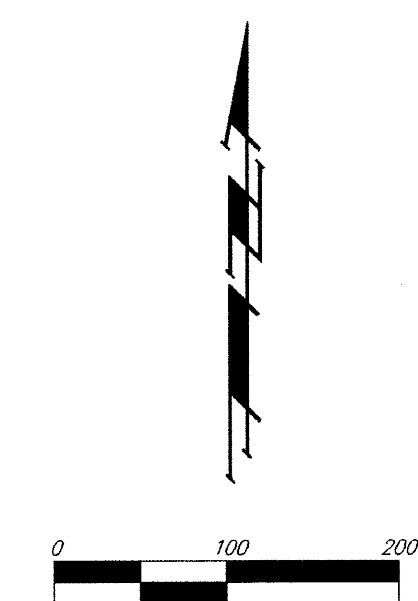
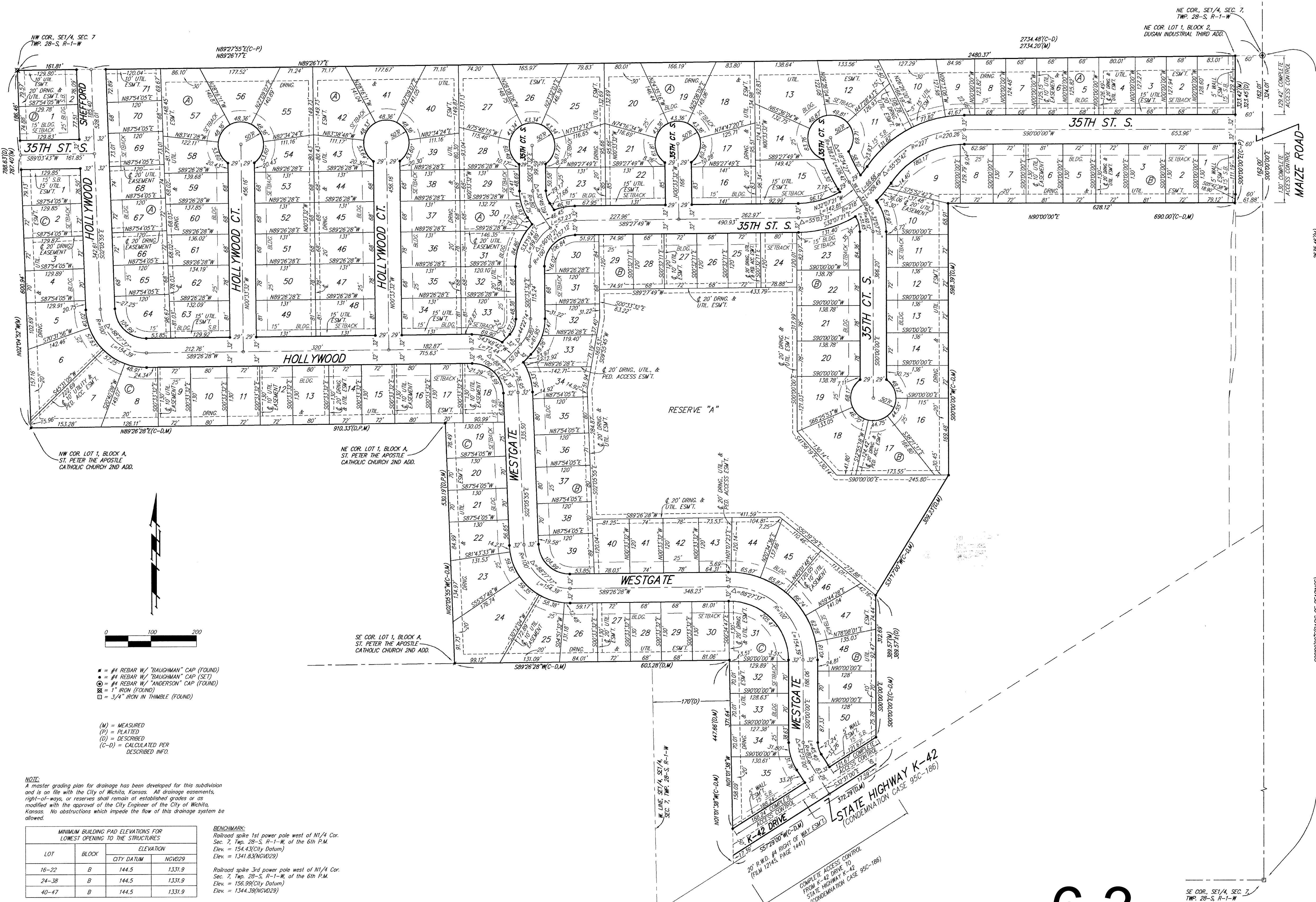


# HARVEST RIDGE ADDITION WICHITA, SEDGWICK COUNTY, KANSAS



- #4 REBAR W/ "BAUGHMAN" CAP (FOUND)
  - #4 REBAR W/ "BAUGHMAN" CAP (SET)
  - #4 REBAR W/ "ANDERSON" CAP (FOUND)
  - = 1" IRON (FOUND)
  - = 3/4" IRON IN THIMBLE (FOUND)
- (M) = MEASURED  
(P) = PLATTED  
(D) = DESCRIBED  
(C-D) = CALCULATED PER DESCRIBED INFO.

**NOTE:**  
A master grading plan for drainage has been developed for this subdivision and is on file with the City of Wichita, Kansas. All drainage easements, right-of-ways, or reserves shall remain at established grades or as modified with the approval of the City Engineer of the City of Wichita, Kansas. No obstructions which impede the flow of this drainage system be allowed.

MINIMUM BUILDING PAD ELEVATIONS FOR LOWEST OPENING TO THE STRUCTURES			
LOT	BLOCK	ELEVATION	
		CITY DATUM	NGVD29
16-22	B	144.5	1331.9
24-38	B	144.5	1331.9
40-47	B	144.5	1331.9

**BENCHMARK:**  
Railroad spike 1st power pole west of N1/4 Cor. Sec. 7, Twp. 28-S, R-1-W, of the 6th P.M. Elev. = 154.43(City Datum)  
Elev. = 1341.83(NGVD29)

Railroad spike 3rd power pole west of N1/4 Cor. Sec. 7, Twp. 28-S, R-1-W, of the 6th P.M. Elev. = 156.99(City Datum)  
Elev. = 1344.39(NGVD29)



THIS SHEET HAS BEEN SIGNED, SEALED AND DATED ELECTRONICALLY

# 6.3

**BAUGHMAN COMPANY P. A.**  
ENGINEERING, SURVEYING, & PLANNING  
316-262-7221 • 315 ELLIS • WICHITA, KANSAS 67211