

ST. PETER THE APOSTLE CATHOLIC CHURCH ADDITION

SEDGWICK COUNTY, KANSAS

State of Kansas) SS We, Baughman Company, P.A., Surveyors in Sedgwick County and State do hereby certify that we have surveyed and platted "ST. PETER THE APOSTLE CATHOLIC CHURCH ADDITION", Sedgwick County, Kansas, and that the accompanying plat is a true and correct exhibit of the property surveyed, described as follows: A tract of land in the SW1/4 and the SE1/4 of Sec. 7, Twp. 28-S, R-1-W of the 6th P.M., Sedgwick County, Kansas, more particularly described as follows: Commencing at the SE Corner of the SE1/4 of said SW1/4, said SE Corner also being the SE Corner of Supplemental Plat to Schulte, Sedgwick County, Kansas; thence N01°33'26"W along the east line of the SE1/4 of said SW1/4, 730 feet to the NE Corner of said Supplemental Plat to Schulte and for a point of beginning; thence S89°36'27"W along the north line of said Supplemental Plat to Schulte, 622.474 feet; thence N01°33'26"W 590 feet to a point on the north line of the SE1/4 of said SW1/4; thence N89°38'17"E along the north line of the SE1/4 of said SW1/4, 156.48 feet to a point 466 feet west of the SE Corner of the NE1/4 of said SW1/4; thence N01°07'13"E, 285.02 feet; thence N89°37'34"E, 452.68 feet to a point on the east line of the NE1/4 of said SW1/4; thence S01°33'26"E along the east line of the NE1/4 of said SW1/4, 285.08 feet to the NW Corner of the SW1/4 of said SE1/4; thence N89°58'57"E along the north line of the SW1/4 of said SE1/4, 784.89 feet; thence S00°29'09"E parallel with the east line of the SW1/4 of said SE1/4, 901.60 feet, more or less, to a point on a curve on the north right-of-way of K-42 Highway, thence southwesterly on said north right-of-way line on a curve to the left having a central angle of 01°01'04" and a radius of 19158.61 feet, an arc distance of 340.29 feet, (having a chord length of 340.29 feet bearing S56°37'29"W), to the ESE Corner of Lot 1, Block A, Schulte Country Store Addition, Sedgwick County, Kansas; thence N01°34'25"W along the east line of said Lot 1, 163.73 feet to the NE Corner of said Lot 1; thence continuing N01°34'25"W, 11.80 feet; thence S90°W parallel with the south line of the SW1/4 of said SE1/4, 348.98 feet to a point 130 feet east of the west line of the SW1/4 of said SE1/4; thence N01°33'26"W parallel with the west line of the SW1/4 of said SE1/4, 515.17 feet; thence S90°W parallel with the south line of the SW1/4 of said SE1/4, 130 feet to a point on the west line of the SW1/4 of said SE1/4; thence S01°33'26"E along the west line of the SW1/4 of said SE1/4, 216 feet to the point of beginning.

Existing public easements and dedications being vacated by virtue of K.S.A. 12-512(b).
Baughman Co., P.A.

Gregory F. Severns
Gregory F. Severns, 11-19-96 Surveyor
KANSAS
Professional Engineer

Know all men by these presents that we, the undersigned, have caused the land in the surveyors certificate to be platted into a Lot to be known as "ST. PETER THE APOSTLE CATHOLIC CHURCH ADDITION", Sedgwick County, Kansas. The utility easements are hereby granted as indicated for the construction and maintenance of all public utilities. All obutters rights of access to or from K-42 Highway over and across the southeast line of Lot 1 are hereby granted to the appropriate governing body provided, however, that said Lot 1 shall have access to K-42 Highway at one location as shall be determined by the Engineer for the appropriate governing body.

Catholic Diocese of Wichita
Eugene J. Gerber
EUGENE J. GERBER, PRESIDENT (1996)

State of Kansas) SS The foregoing instrument acknowledged before me, this 22nd day of NOVEMBER, 1996, by EUGENE J. GERBER, PRESIDENT of the Catholic Diocese of Wichita, on behalf of the Diocese.

Claudine H. Wald
Claudine H. Wald, Notary Public
CLAUDINE H. WALD

CLAUDINE H. WALD
NOTARY PUBLIC
STATE OF KANSAS
My Comm. Exp. 3/8/00
My Appl. Exp. MARCH 8, 2000

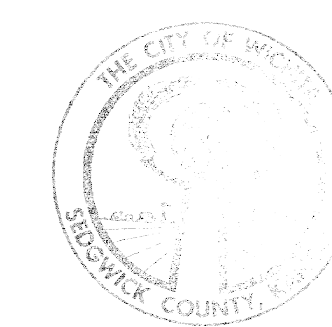
This plat approved and all dedications shown hereon accepted by the Board of Commissioners of Sedgwick County, Kansas, this 22 day of January, 1996.

Thomas G. Winters Chairman
Paul W. Hancock Chair Pro-Tem
Betsy C. Gwin Commissioner
Melody E. Miller Commissioner
Mark F. Schroeder Commissioner
James Alford County Clerk



This plat of "ST. PETER THE APOSTLE CATHOLIC CHURCH ADDITION" Sedgwick County, Kansas has been submitted to and approved by the Wichita, Sedgwick County Metropolitan Area Planning Commission, Wichita, Kansas. Dated this 25th day of November, 1996. Wichita-Sedgwick County Metropolitan Area Planning Commission

John C. Frye Chairman
Marvin S. Krout Secretary



This plat approved and all dedications shown hereon accepted by the City Council of the City of Wichita, Kansas, this 17th day of December, 1996.

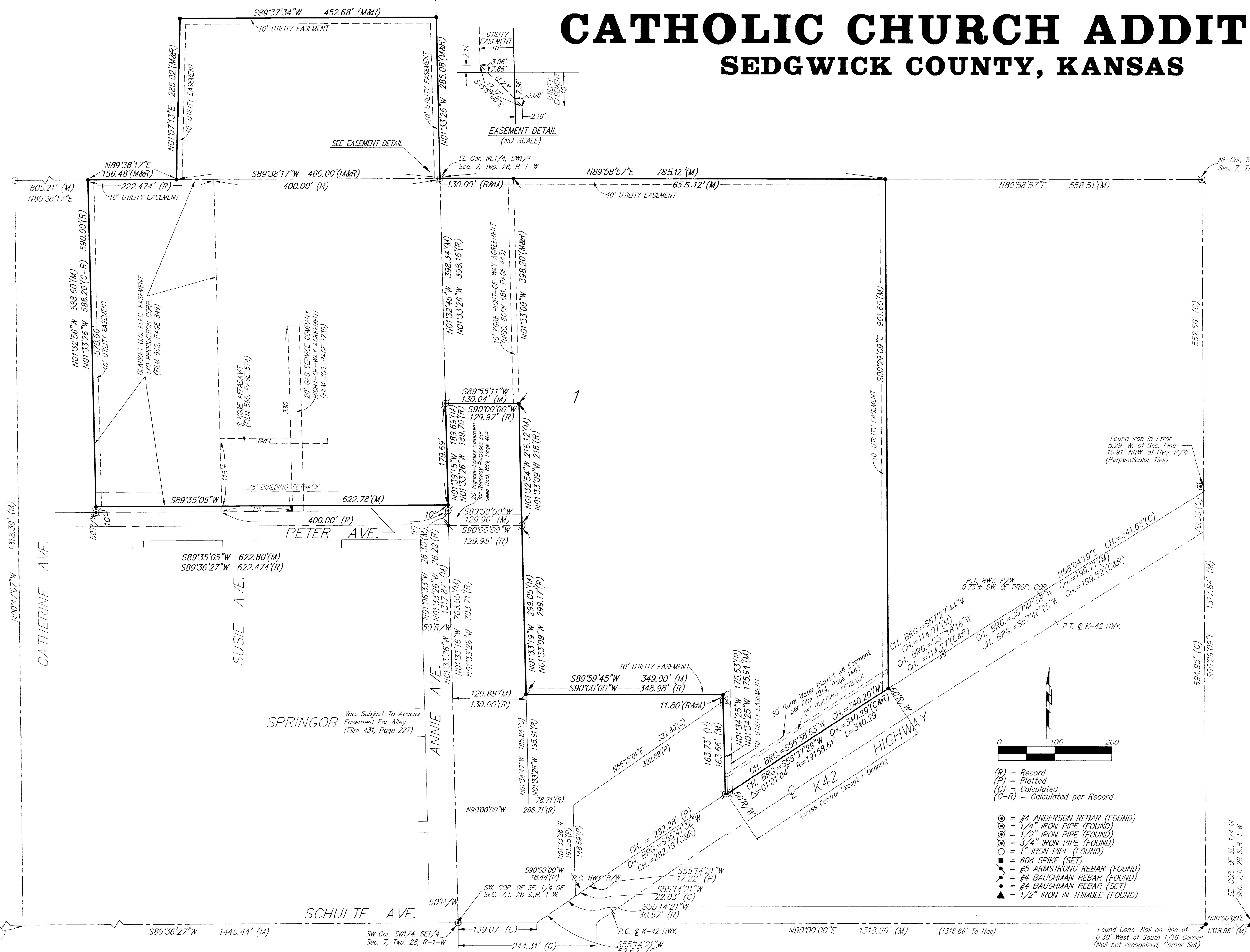
Bob Knight Mayor
Pat Burnett City Clerk # 1581215

Entered on transfer record this 27 day of January, 1996.

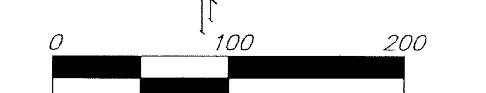
State of Kansas) SS This is to certify that this plat has been filed for record in the office of the Register of Deeds, this 27 day of January, 1996, at 1:30 o'clock P.M. and is duly recorded.
James Alford County Clerk
Larry Consolver Register of Deeds
Michael D. Hurtt Deputy



THIS SHEET HAS BEEN SIGNED, SEALED AND DATED ELECTRONICALLY



Legend:
(R) = Record
(P) = Plotted
(C) = Calculated
(C-R) = Calculated per Record
⊙ = #4 ANDERSON REBAR (FOUND)
⊖ = 1/4" IRON PIPE (FOUND)
⊗ = 1/2" IRON PIPE (FOUND)
⊘ = 3/4" IRON PIPE (FOUND)
⊙ = 1" IRON PIPE (FOUND)
■ = 60d SPIKE (SET)
▲ = #5 ARMSTRONG REBAR (FOUND)
◆ = #4 BAUGHMAN REBAR (FOUND)
▲ = #4 BAUGHMAN REBAR (SET)
▲ = 1/2" IRON IN THIMBLE (FOUND)



SW COR. OF SE 1/4 OF SEC. 7, T. 28 S., R. 1 W.
NE COR. SW 1/4, SE 1/4 SEC. 7, T. 28, R-1-W

20' x

6.5