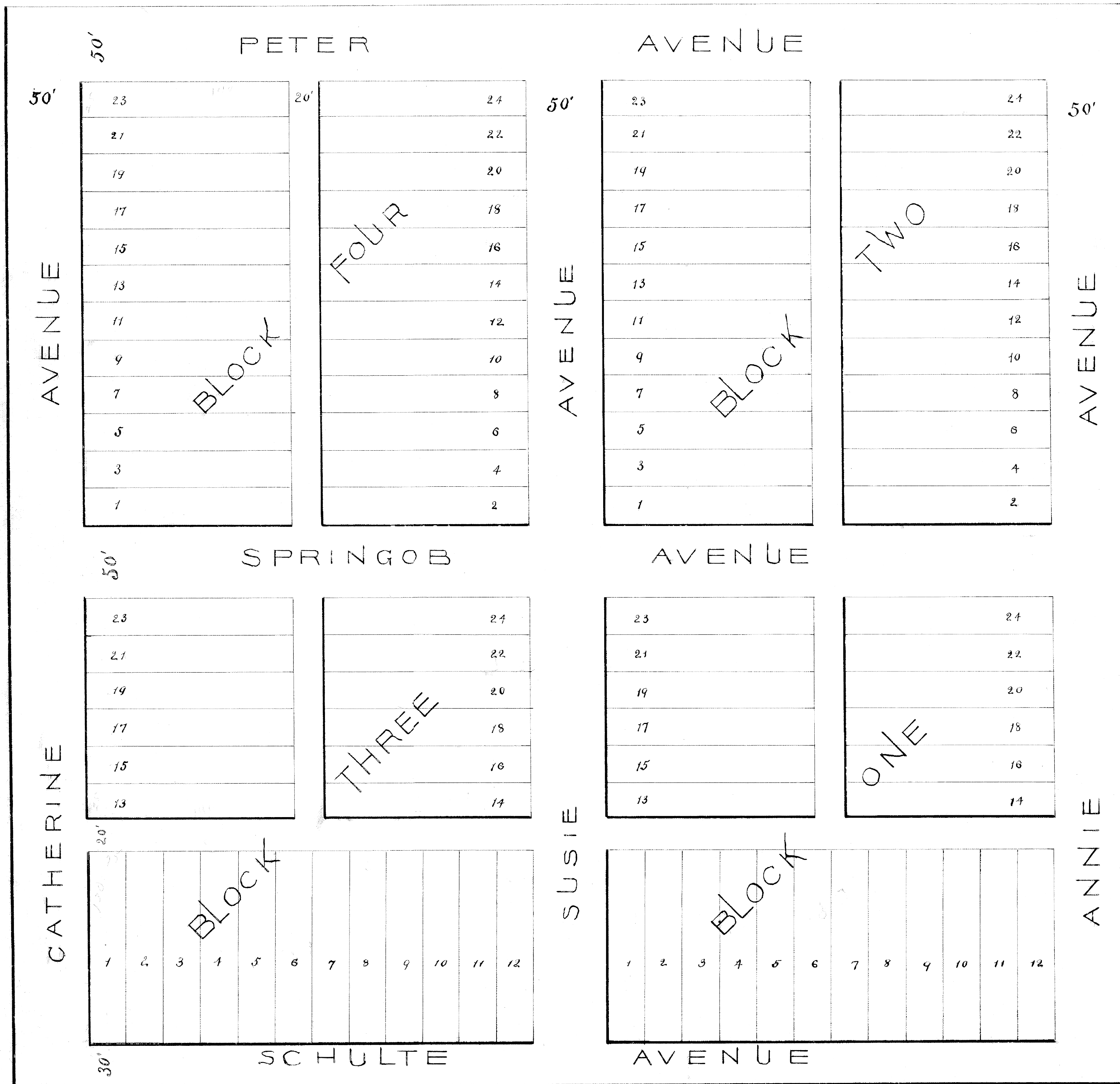


# SUPPLEMENTAL PLAT TO

# SCHULTE.

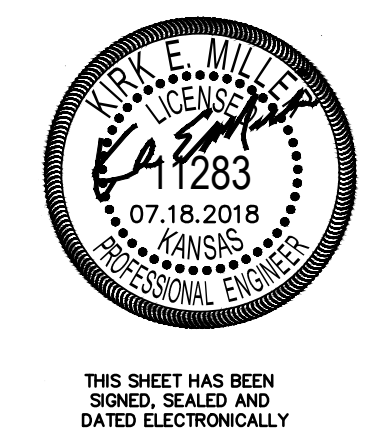
Entered on  
Transfer Record  
JUL 1 1905  
L. N. Bartonight  
COUNTY CLERK

812



State of Kansas } S.S.  
County of Sedgwick } I Ransom H. Brown, a civil engineer in said county and state do hereby certify that I surveyed and platted supplemental plat to Schulte, and that the accompanying map is a correct exhibit of the property as platted, described as follows: Beginning at the Southeast corner Southwest 1/4 of section 7, Township 28 South, Range 1 West of the 6th. P.M. Thence North 730 feet, Thence West 750 feet, Thence South 730 feet, Thence East 750 feet to the place of beginning.  
All lots facing on Schulte Avenue are 25 feet by 130 feet, all other lots are 25 feet by 140 feet.

Width of avenues and alleys are as indicated by figures on the plat.  
State of Kansas } S.S. Ransom H. Brown.  
County of Sedgwick } Know all men by these presents that we, John Springob and Mary A. Springob his wife, Peter Springob and Susie Springob his wife, Peter Schulte and Catherine Schulte his wife, have caused the land in the plat and described in the surveyor's certificate to be surveyed and platted into lots, avenues and alleys, to be known as supplemental plat to Schulte. The streets and alleys are hereby dedicated to and for the use of the public and the lots are intended for sale.



*Peter Schulte*  
*State Schulte*  
*John Springob*  
*Mary A Springob*  
*Peter Springob*  
*Susie Springob*

State of Kansas } S.S.  
County of Sedgwick } Be it remembered that on this 5<sup>th</sup> day of July, 1905 before me, a notary public in and for said County and state, came Peter Schulte, Catherine Schulte, Peter Springob, Susie Springob, John Springob and Mary A. Springob to me personally known to be the same persons who executed the foregoing instrument of writing, and duly acknowledged the execution of the same as their voluntary acts and deeds.

*W. A. Conly* Notary Public.  
My commission expires *July 12 - 1905*  
*W. A. Conly*  
*July 10 1905 Paid*

6.7

SI-3-4