

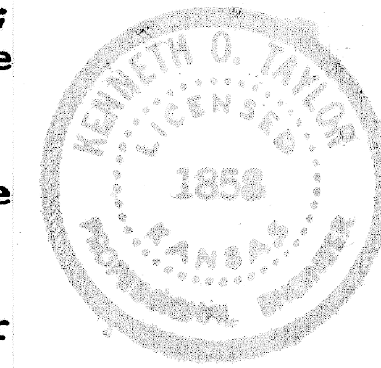
EWERTZ ADDITION

SEDGWICK COUNTY, KANSAS

State of Kansas, County of Sedgwick, SS.

I, Kenneth O. Taylor, Civil Engineer in said State and County do hereby certify that I have surveyed and platted "EWERTZ ADDITION", Sedgwick County, Kansas and that the accompanying plat is a true and correct exhibit of said survey described as follows: A tract in the SW 1/4 of Section 7, T28S, RLW of the 6th P.M., Sedgwick County, Kansas, described as follows: Beginning at a point 40 feet north and 40 feet east of the SW corner of said SW 1/4; thence north parallel to the west line of said SW 1/4, 651.99 feet; thence east parallel to the south line of said SW 1/4, 686 feet; thence south 651.8 feet to a point 40 feet north of the south line of said SW 1/4 and 693.66 feet east of the point of beginning; thence west 693.66 feet to the point of beginning.

Kenneth O. Taylor, Civil Engineer
Kenneth O. Taylor



Know all men by these presents that I, Bertha Ewertz, a single woman, have caused the land described in the Civil Engineer's certificate to be platted into a lot, a block and streets to be known as "EWERTZ ADDITION", Sedgwick County, Kansas. The streets are hereby dedicated to and for the use of the public. The floodway shall be the responsibility of the owners of the property in the subdivision until such time as the governing body exercising jurisdiction elects to assume the responsibility for maintenance and improvement of the drainage, provided further that no building shall be constructed on or within said floodway, nor shall any fill, change of grade, creation of channel or other work be carried on without the permission of the Wichita-Sedgwick County Flood Control Office or their successors of office.

All abutter's rights of access to or from 119th St. West over and across the west line of Lot 1, Block 1 are hereby granted to the appropriate governing body, provided, however, that Lot 1, Block 1, shall have access to 119th St. West at two locations, except over and across the south 175 feet of said west line, such locations to be designated by the appropriate governing body.

All abutter's rights of access to or from McArthur Road over and across the south line of Lot 1, Block 1 are hereby granted to the appropriate governing body, provided, however, that Lot 1, Block 1 shall have access to McArthur Road at two locations, except over and across the west 175 feet of said south line, such locations to be designated by the appropriate engineer.

No structure shall be constructed below a minimum pad elevation of 1335 mean sea level datum.

Bertha Ewertz
Bertha Ewertz

State of Kansas, County of Sedgwick, SS.

The foregoing instrument was acknowledged before me this 12 day of June, 19 80 by Bertha Ewertz, a single woman.

Marsha L. Menges, Notary Public
MARSHA L. MENGES
My Commission expires: Feb 27, 1982

This plat of "EWERTZ ADDITION", Sedgwick County, Kansas has been submitted to and approved by the Wichita-Sedgwick County Metropolitan Area Planning Commission, Wichita, Kansas.

Dated this 5TH day of JULY, 1979.

Wichita-Sedgwick County Metropolitan
Area Planning Commission

William J. Goebel, Chairman
William J. Goebel.

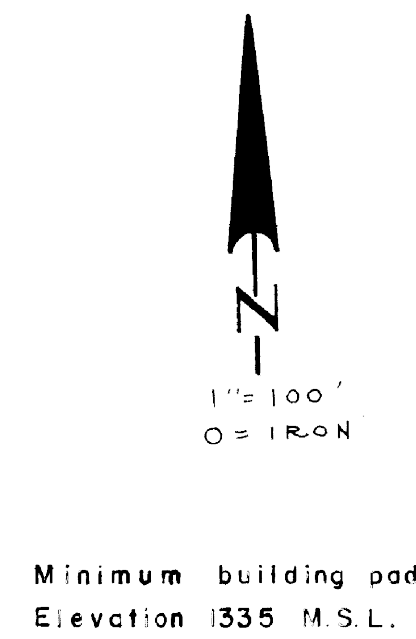
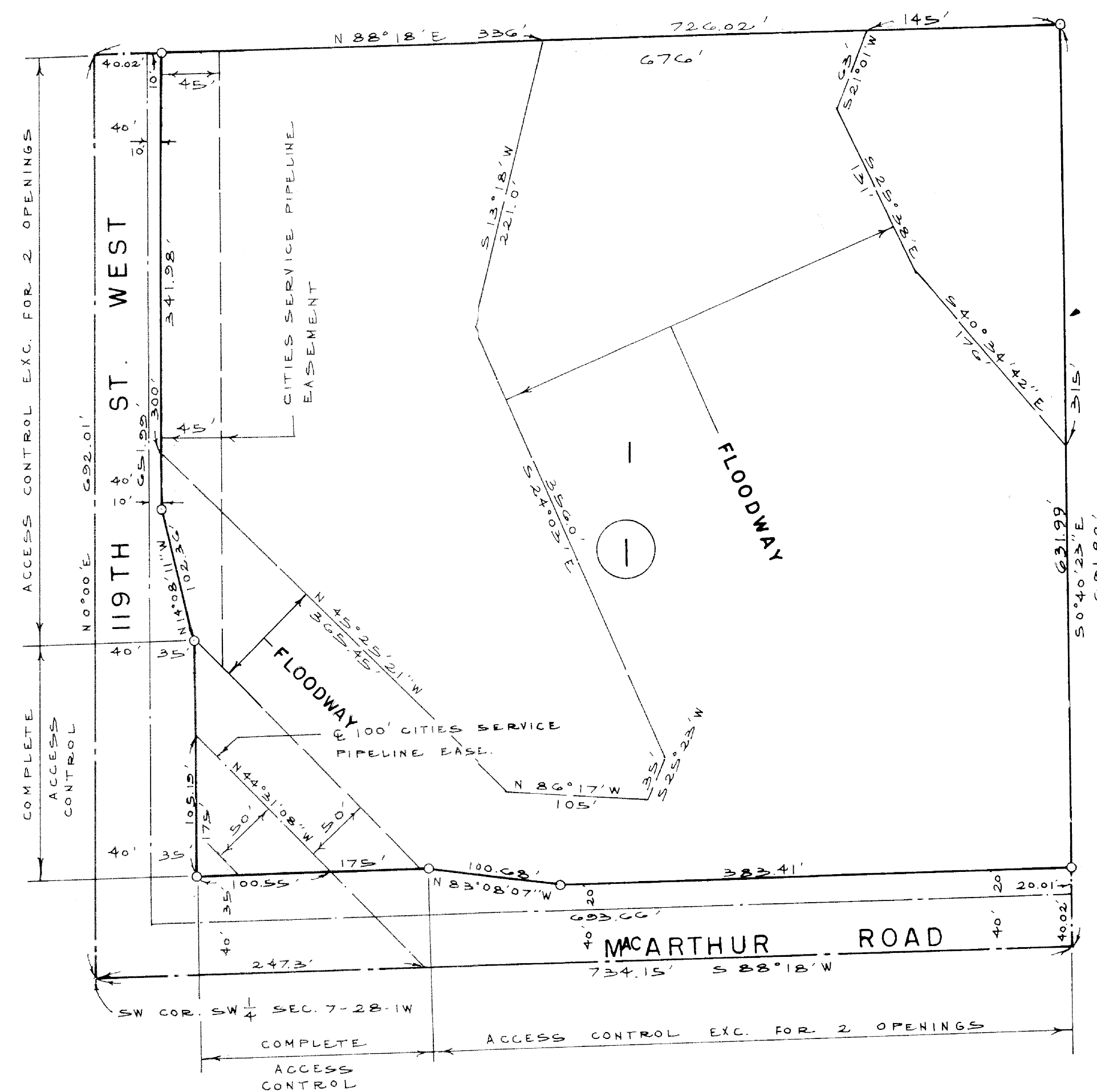
Robert A. Lakin, Secretary
Robert A. Lakin

This plat approved and all dedications shown hereon accepted by the Board of City Commissioners of the City of Wichita, Kansas, this 12th day of July, 19 80

Robert G. Kinight, Mayor
Robert G. Kinight

Donald C. Gisick, City Clerk
Donald C. Gisick

6.9



Minimum building pad
Elevation 1335 M.S.L.

This plat approved and all dedications shown hereon accepted by the Board of County Commissioner of Sedgwick County, Kansas, this 10th day of July, 19 80.

Everett Potrick, Chairman
Everett Potrick

Tom Scott, Commissioner
Tom Scott

ATTEST: Donald E. Gragg, Commissioner
Donald E. Gragg

Dorothy K. White, County Clerk
Dorothy K. White

Entered on transfer record this 10 day of July, 19 80.

Dorothy K. White, County Clerk
Dorothy K. White

State of Kansas, County of Sedgwick, SS.

This is to certify that this instrument was filed for record in the Register of Deeds Office, at 10:30 o'clock A..m., on the 10TH day of JULY, 19 80.

Bette F. McCart, Register of Deeds
Bette F. McCart

Pat Kettler, Deputy
Pat Kettler

20.00

#495401