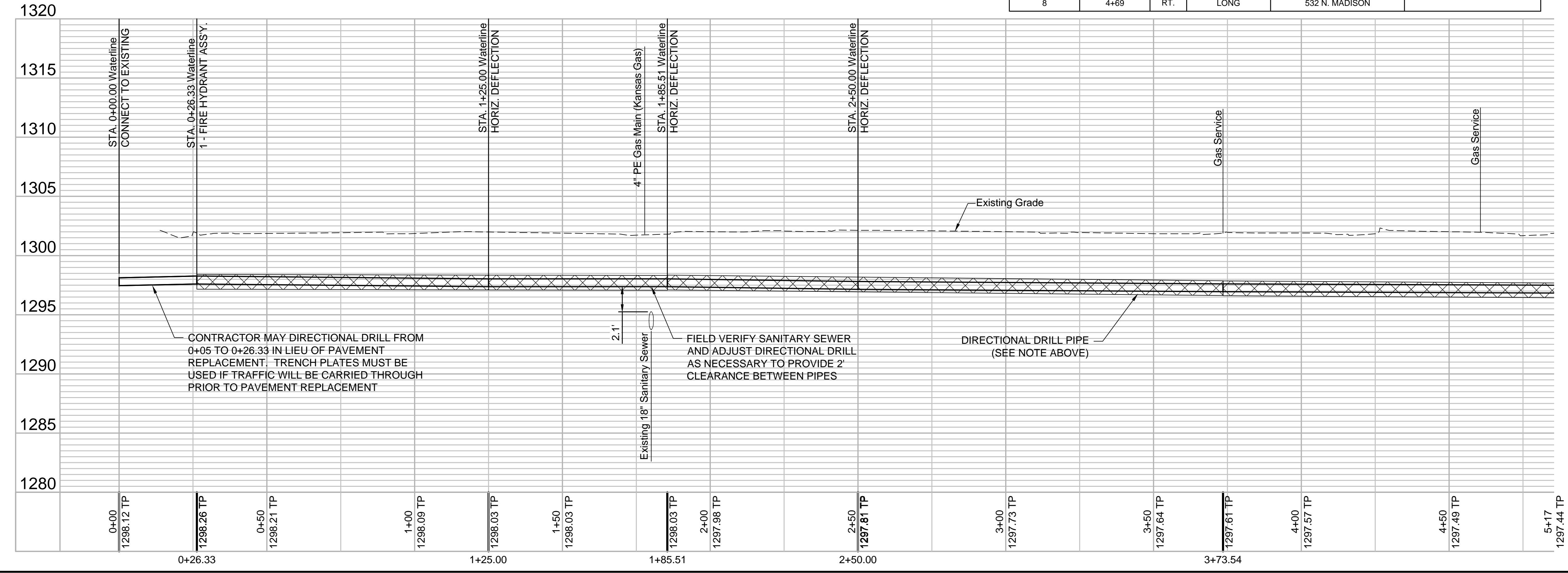


- 8" CONCRETE PAVEMENT REMOVE & REPLACE
- SIDEWALK & WHEELCHAIR RAMP REMOVE & REPLACE

- NOTES:
1. Contractor to protect existing trees.
  2. Where proposed water line crosses existing water line and other utilities, contractor to pothole crossings to ensure no conflicts prior to construction. Contractor to ensure 3.5' bury depth is maintained on all new water lines.
  - \* 3. Removal & Replacement of Concrete Sidewalk, Pavement or Driveways shall be incidental to the Bid Items for 8" Pipe.
  - \* 4. Quantities for removal of concrete items are For Information Only.
  5. Westar will support pole at 1+85 at contractor's request.
  6. There is an abandoned Kansas Gas 3" gas main on the west side of Madison that may be encountered during construction. Contact Adam Knolla with Kansas Gas if there are questions (316-832-3123)

WATER SERVICE SUMMARY					
METER #	BL STATION	LT./RT.	SERVICE (LONG OR SHORT)	ADDRESS	AS BUILT
1	2+14	LT.	SHORT	517 N. MADISON	To Be Abandoned
2	2+18	RT.	LONG	516 N. MADISON	
3	2+96	RT.	LONG	518 N. MADISON	
4	3+36	RT.	LONG	520 N. MADISON	
5	4+08	LT.	SHORT	531 N. MADISON	
6	4+32	RT.	LONG	524 N. MADISON	
7	4+67	LT.	SHORT	539 N. MADISON	
8	4+69	RT.	LONG	532 N. MADISON	



**GARVER**  
 © 2018 GARVER, LLC  
 THIS DOCUMENT, ALONG WITH THE IDEAS AND DESIGNS CONVEYED HEREIN, SHALL BE CONSIDERED INSTRUMENTS OF PROFESSIONAL SERVICE AND ARE PROPERTY OF GARVER, LLC. ANY USE, REPRODUCTION, OR DISTRIBUTION OF THIS DOCUMENT, ALONG WITH THE IDEAS AND DESIGN CONTAINED HEREIN, IS PROHIBITED UNLESS AUTHORIZED IN WRITING BY GARVER, LLC OR EXPLICITLY ALLOWED IN THE GOVERNING PROFESSIONAL SERVICES AGREEMENT FOR THIS WORK.



REV.	DATE	DESCRIPTION	BY

**CITY OF WICHITA**  
 WICHITA, KANSAS

**MADISON AND MURDOCK WATER MAIN REPLACEMENT (GROUP A)**

Water Plan-Profile 1

JOB NO.: 18267614  
 DATE: DEC 2018  
 DESIGNED BY: KWL  
 DRAWN BY: KWL

BAR IS ONE INCH ON ORIGINAL DRAWING  
 IF NOT ONE INCH ON THIS SHEET, ADJUST SCALES ACCORDINGLY.

DRAWING NUMBER

File: L:\2018\18267614 - Madison and Murdock Water Main Drawings\C3D\01 - WL - 2D-SCALE.dwg Last Save: 12/4/2018 3:01 PM Last saved by: KWL  
 Last Plotted by: Lee, Ken W. Plot Style: ... Plot Scale: 1:2,500 Plot Date: 12/4/2018 3:09 PM Plotter used: None