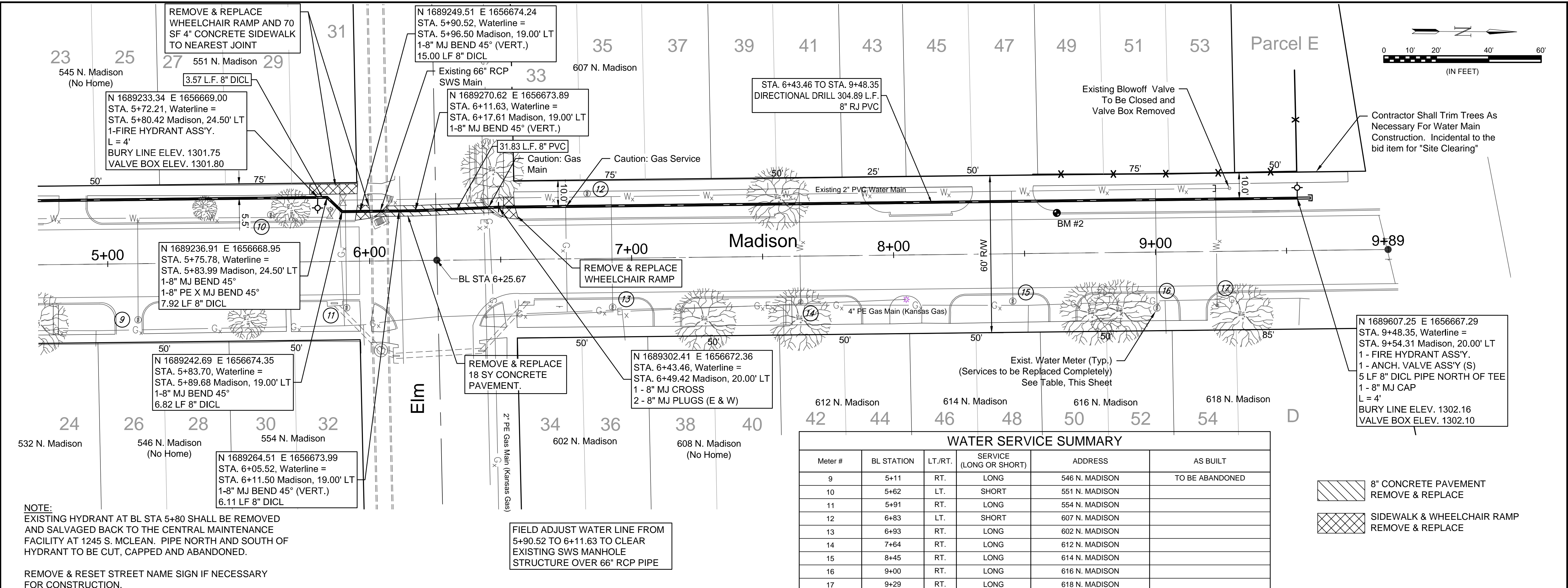
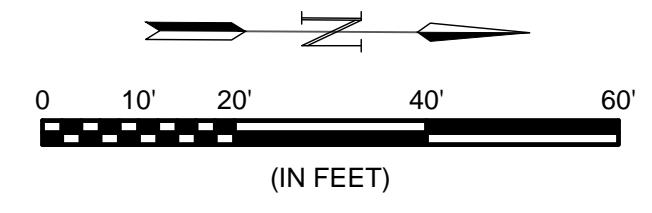




© 2018 GARVER, LLC  
 THIS DOCUMENT, ALONG WITH THE IDEAS AND DESIGNS CONVEYED HEREIN, SHALL BE CONSIDERED INSTRUMENTS OF PROFESSIONAL SERVICE AND ARE PROPERTY OF GARVER, LLC. ANY USE, REPRODUCTION, OR DISTRIBUTION OF THIS DOCUMENT, ALONG WITH THE IDEAS AND DESIGN CONTAINED HEREIN, IS PROHIBITED UNLESS AUTHORIZED IN WRITING BY GARVER, LLC OR EXPLICITLY ALLOWED IN THE GOVERNING PROFESSIONAL SERVICES AGREEMENT FOR THIS WORK.

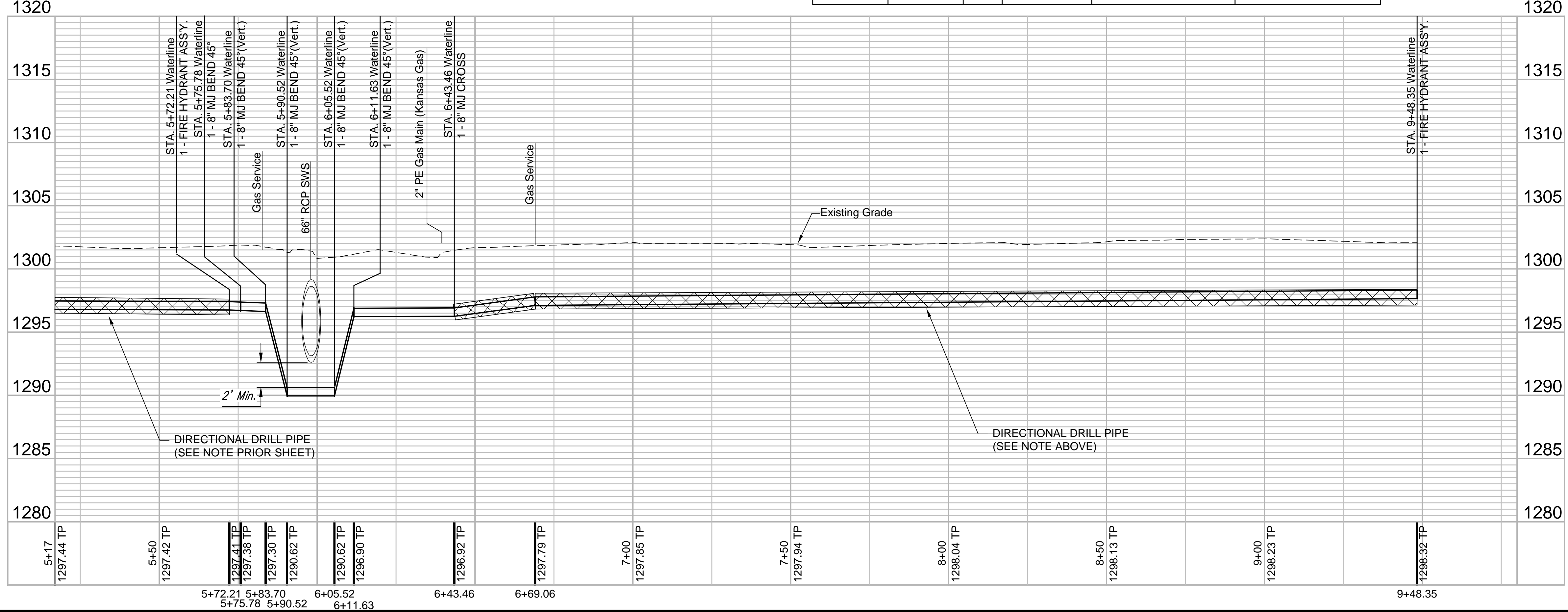
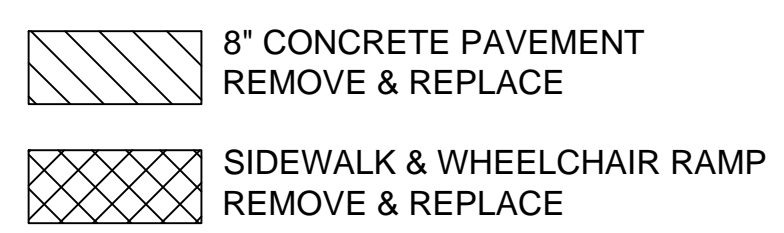


**NOTE:**  
 EXISTING HYDRANT AT BL STA 5+80 SHALL BE REMOVED AND SALVAGED BACK TO THE CENTRAL MAINTENANCE FACILITY AT 1245 S. MCLEAN. PIPE NORTH AND SOUTH OF HYDRANT TO BE CUT, CAPPED AND ABANDONED.

REMOVE & RESET STREET NAME SIGN IF NECESSARY FOR CONSTRUCTION.

FIELD ADJUST WATER LINE FROM 5+90.52 TO 6+11.63 TO CLEAR EXISTING SWS MANHOLE STRUCTURE OVER 66" RCP PIPE

WATER SERVICE SUMMARY					
Meter #	BL STATION	LT./RT.	SERVICE (LONG OR SHORT)	ADDRESS	AS BUILT
9	5+11	RT.	LONG	546 N. MADISON	TO BE ABANDONED
10	5+62	LT.	SHORT	551 N. MADISON	
11	5+91	RT.	LONG	554 N. MADISON	
12	6+83	LT.	SHORT	607 N. MADISON	
13	6+93	RT.	LONG	602 N. MADISON	
14	7+64	RT.	LONG	612 N. MADISON	
15	8+45	RT.	LONG	614 N. MADISON	
16	9+00	RT.	LONG	616 N. MADISON	
17	9+29	RT.	LONG	618 N. MADISON	



File: L:\2018\18267614 - Madison and Murdock Water Main Drawings\C3D\02 - WL - 2D-Scale.dwg Last Save: 12/4/2018 3:07 PM Last saved by: KWL  
 Last plotted by: Lee, Ken W. Plot Style: .... Plot Scale: 1:2,584.9 Plot Date: 12/4/2018 3:09 PM Plotter used: None

REV.	DATE	DESCRIPTION	BY

CITY OF WICHITA  
 WICHITA, KANSAS  
 MADISON AND MURDOCK WATER MAIN REPLACEMENT (GROUP A)

Water Plan-Profile 2  
 JOB NO.: 18267614  
 DATE: DEC 2018  
 DESIGNED BY: KWL  
 DRAWN BY: KWL  
 BAR IS ONE INCH ON ORIGINAL DRAWING  
 IF NOT ONE INCH ON THIS SHEET, ADJUST SCALES ACCORDINGLY.  
 DRAWING NUMBER  
 SHEET NUMBER **6** OF **11**