

WATERLINE NO. 1				
COORDINATE LIST				
POINT	NORTHING	EASTING	STATION	DESCRIPTION
6005	1,687,414.8332	1,643,561.3446	0+00.00	EXIST./BEND
6006	1,687,424.8005	1,643,562.1521	0+10.00	VAULT
6007	1,687,447.7254	1,643,564.0096	0+33.00	VAULT
6008	1,687,450.7156	1,643,564.2518	0+36.00	BEND
6009	1,687,468.0089	1,643,565.6530	0+53.35	BEND
6010	1,687,477.1166	1,643,566.3909	0+62.49	EXIST./BEND

WATERLINE NO. 2				
COORDINATE LIST				
POINT	NORTHING	EASTING	STATION	DESCRIPTION
6011	1,687,470.1452	1,643,478.7022	0-04.74	EXIST. BEND
6012	1,687,469.0058	1,643,483.3043	0+00.00	EXIST. PIPE
6013	1,687,466.6026	1,643,493.0113	0+10.00	BEND
6014	1,687,465.2174	1,643,495.6724	0+13.00	BEND
6015	1,687,446.9063	1,643,530.8510	0+52.66	TEE
6016	1,687,439.7036	1,643,544.6887	0+68.26	BEND
6017	1,687,437.3935	1,643,549.1266	0+73.26	BEND
6018	1,687,437.0705	1,643,553.1135	0+77.76	VAULT
6019	1,687,435.4553	1,643,573.0482	0+97.26	VAULT
6020	1,687,435.0516	1,643,578.0318	1+02.26	BEND
6021	1,687,434.2440	1,643,587.9992	1+12.26	BEND
6022	1,687,433.4411	1,643,597.9089	1+22.20	BEND
6023	1,687,432.1297	1,643,602.7928	1+27.20	EXIST. PIPE

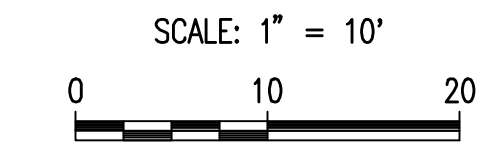
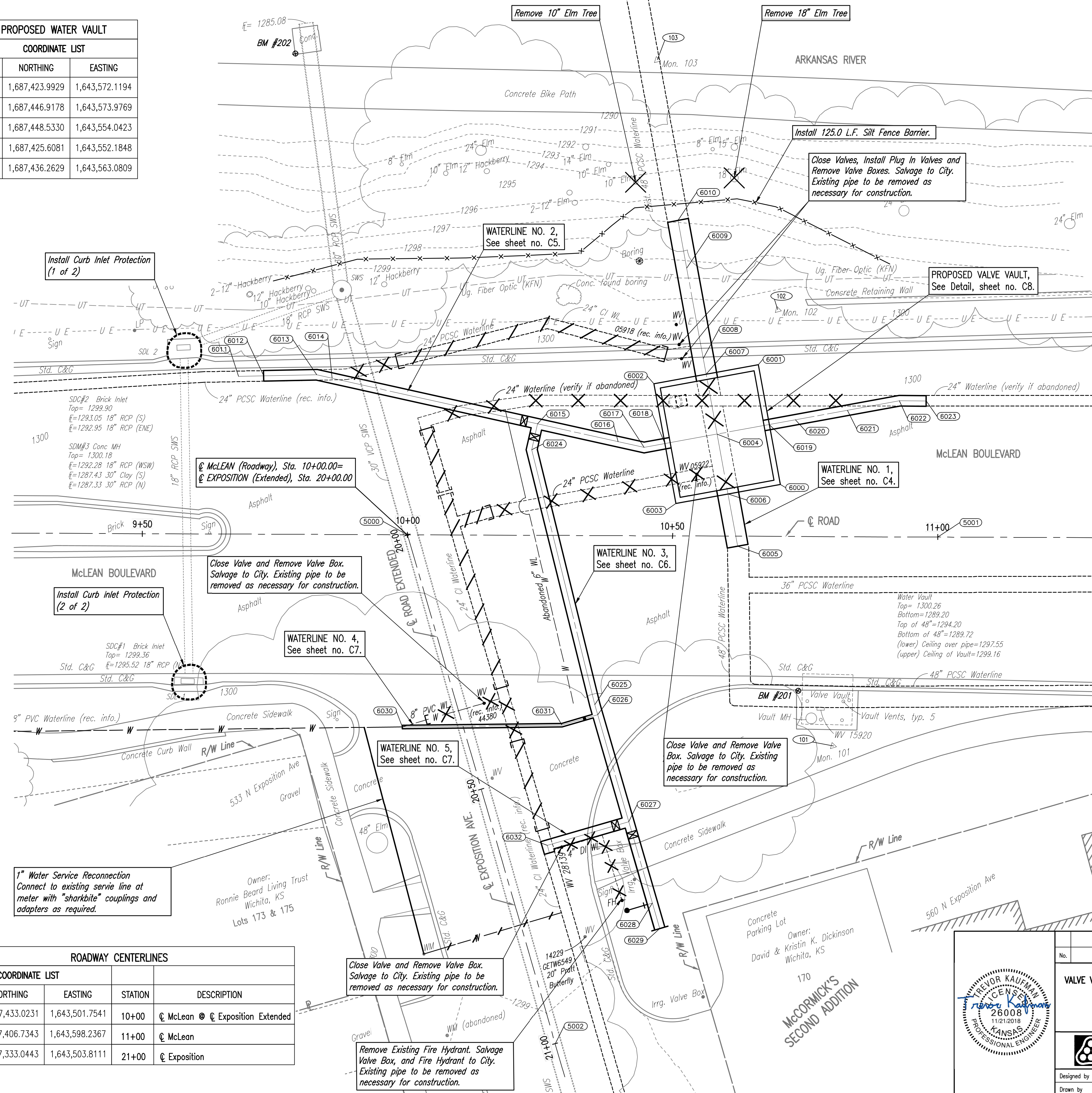
WATERLINE NO. 3				
COORDINATE LIST				
POINT	NORTHING	EASTING	STATION	DESCRIPTION
6015	1,687,446.9063	1,643,530.8510	0+00.00	TEE
6024	1,687,442.4711	1,643,528.5425	0+05.00	BEND
6025	1,687,392.9304	1,643,527.5842	0+54.55	DEFLECTION
6026	1,687,390.9281	1,643,527.6254	0+56.55	TEE
6027	1,687,369.9325	1,643,528.0574	0+77.55	TEE
6028	1,687,353.9359	1,643,528.3865	0+93.55	FH
6029	1,687,348.9370	1,643,528.4894	0+98.55	CAP

WATERLINE NO. 4				
COORDINATE LIST				
POINT	NORTHING	EASTING	STATION	DESCRIPTION
6026	1,687,390.9281	1,643,527.6254	0+00.00	EXIST. PIPE
6030	1,687,398.2451	1,643,491.4317	0+30.11	BEND
6031	1,687,390.7837	1,643,520.6059	0+37.13	TEE

WATERLINE NO. 5				
COORDINATE LIST				
POINT	NORTHING	EASTING	STATION	DESCRIPTION
6027	1,687,369.9325	1,643,528.0574	0+00.00	TEE
6032	1,687,369.6034	1,643,512.0608	0+16.00	EXIST. PIPE

PROPOSED WATER VAULT		
COORDINATE LIST		
POINT	NORTHING	EASTING
6000	1,687,423.9929	1,643,572.1194
6001	1,687,446.9178	1,643,573.9769
6002	1,687,448.5330	1,643,554.0423
6003	1,687,425.6081	1,643,552.1848
6004	1,687,436.2629	1,643,563.0809

ROADWAY CENTERLINES				
COORDINATE LIST				
POINT	NORTHING	EASTING	STATION	DESCRIPTION
5000	1,687,433.0231	1,643,501.7541	10+00	McLean @ Exposition Extended
5001	1,687,406.7343	1,643,598.2367	11+00	McLean
5002	1,687,333.0443	1,643,503.8111	21+00	Exposition



- LEGEND**
- = PIPE TO BE ABANDONED IN PLACE.
  - = PIPE TO BE REMOVED
  - = CAP/PLUG BY THE CONTRACTOR
  - = SILT FENCE BARRIER
  - = INLET PROTECTION
  - = COORDINATE NUMBER
  - = TREE TO BE REMOVED

- CONTROL POINTS**
- POINT NO. 101  
 N: 1,687,373.759, E: 1,643,568.956  
 1/2" REBAR W/PEC CONTROL CAP  
 1. 6.6' NW TO CENTER OF WATER VAULT MANHOLE  
 2. 49.3' SW TO CENTER OF FIRE HYDRANT  
 3. 11.50' NE TO NE CORNER WATER VAULT
- POINT NO. 102  
 N: 1,687,455.909, E: 1,643,580.227  
 1/2" REBAR W/PEC CONTROL CAP  
 1. 19.50' W TO WATER VALVE  
 2. 82.4' WNW TO CENTER STORM WATER MANHOLE  
 3. 5.85' E TO WEST END BLOCK RETAINING WALL
- POINT NO. 103  
 N: 1,687,507.3531, E: 1,643,570.4198  
 1/2" REBAR W/PEC CONTROL CAP  
 1. 68.3' WNW TO BMK 202  
 2. 2.4' S TO N SIDE CONCRETE WALK  
 3. 94.3' NSE TO LIGHT POLE ON S SIDE WALK

- BENCH MARK LIST**
- BM 201 - CHISELED SQUARE ON NW CORNER OF WATER VAULT ON SOUTH SIDE McLEAN, EAST OF EXPOSITION. ELEV.= 1300.20 (NAVD88)
- BM 202 - CHISELED SQUARE ON SW CORNER CONCRETE PIPE OUTFALL STRUCTURE INTO RIVER ON SOUTH BANK OF RIVER. ELEV.= 1289.01 (NAVD88)

Scaled 11-21-2018 8:13:12 AM by KURPIS/DEKAT  
 Plot Scale 1:1 11-21-2018 8:46:55 PM by KURPIS/DEKAT  
 U:\Wichita-Civil\2018\160312\14\Main\Drawings\160312-014-003-SITE PLAN AND BUBBLE MAP

No.	Revision	By	Date
<b>WATERLINE MODIFICATIONS</b> <b>VALVE VAULT AND WATERLINE RECONNECTIONS AT McLEAN AND EXPOSITION</b> <b>SITE PLAN AND BUBBLE MAP</b> GARY JANZEN, P.E. - CITY ENGINEER CITY OF WICHITA PROJECT NO. 448-90913 PROFESSIONAL ENGINEERING CONSULTANTS, P.A. 303 SOUTH TOPEKA WICHITA, KS 67202 316-262-2691 www.pec1.com			
Designed by	TBK	Job No.	35-160312-14-42
Drawn by	CSL, KTD	Date	JULY 2018
			Sht. C3 of 34