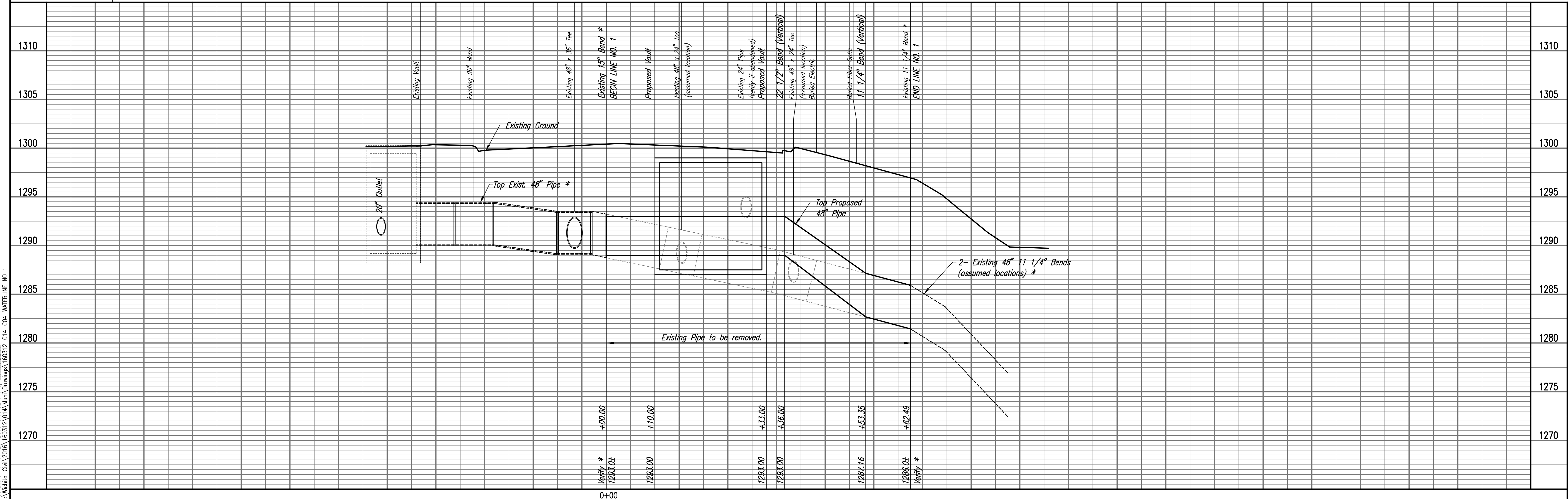


SEE SHEET NO. C3 FOR WATERLINE COORDINATES AND EXISTING PIPE ABANDONMENT.
SEE SHEET NO. C9 FOR PAVING AND GRADING.

* PRIOR TO BEGINNING CONSTRUCTION, THE CONTRACTOR SHALL EXCAVATE THE EXISTING 48" WATERLINE AT WL 1, STA. 0+00.00 AND WL 1, STA. 0+62.49 TO VERIFY PIPE SIZE, PIPE SLOPE, TYPE, FITTINGS, JOINT LOCATIONS, AND HORIZONTAL AND VERTICAL LOCATION. THE CONTRACTOR SHALL REPORT HIS FINDINGS TO THE ENGINEER SO THAT ANY NECESSARY PLAN MODIFICATIONS CAN BE MADE. ANY ADDITIONAL LABOR OR MATERIALS NECESSARY TO COMPLETE THE CONNECTION SHALL BE CONSIDERED SUBSIDIARY TO THE PROJECT.



Unless noted otherwise, elevations shown are top of pipe



Saved: 11-21-2018, 8:15:23 AM by KURTIS DEKAT
Plot Scale: 1:1 11-21-2018 8:49:02 PM by KURTIS DEKAT
U:\Wichita-Civil\2018\60312\014\Wm\Drawings\60312-014-004-WATERLINE NO 1

WATERLINE NO. 1
VALVE VAULT AND WL RECONNECTIONS AT McLEAN AND EXPOSITION
WATERLINE MODIFICATIONS

PROFESSIONAL ENGINEERING CONSULTANTS P.A.
308 SOUTH TOPEKA WICHITA, KS 67202
316-262-2691 www.pec1.com

Designed By: TBK
Drawn By: CSL, KTD

Job No. 35-160312-14-0042
Date: JULY 2018

GARY JANZEN, P.E. - CITY ENGINEER
CITY OF WICHITA PROJECT NO. 448-90913

Sheet C4 of 34