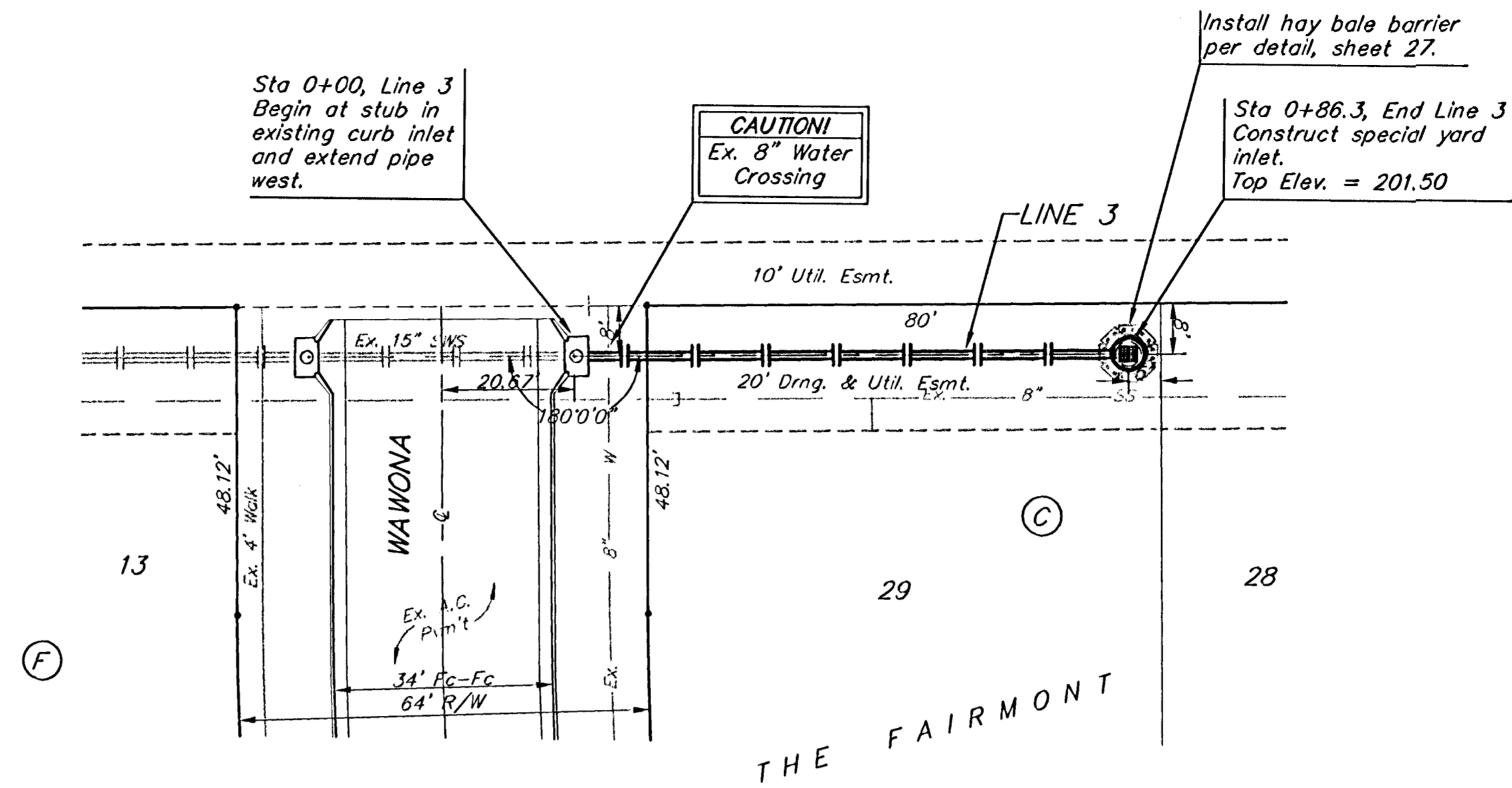


**BENCHMARKS:**

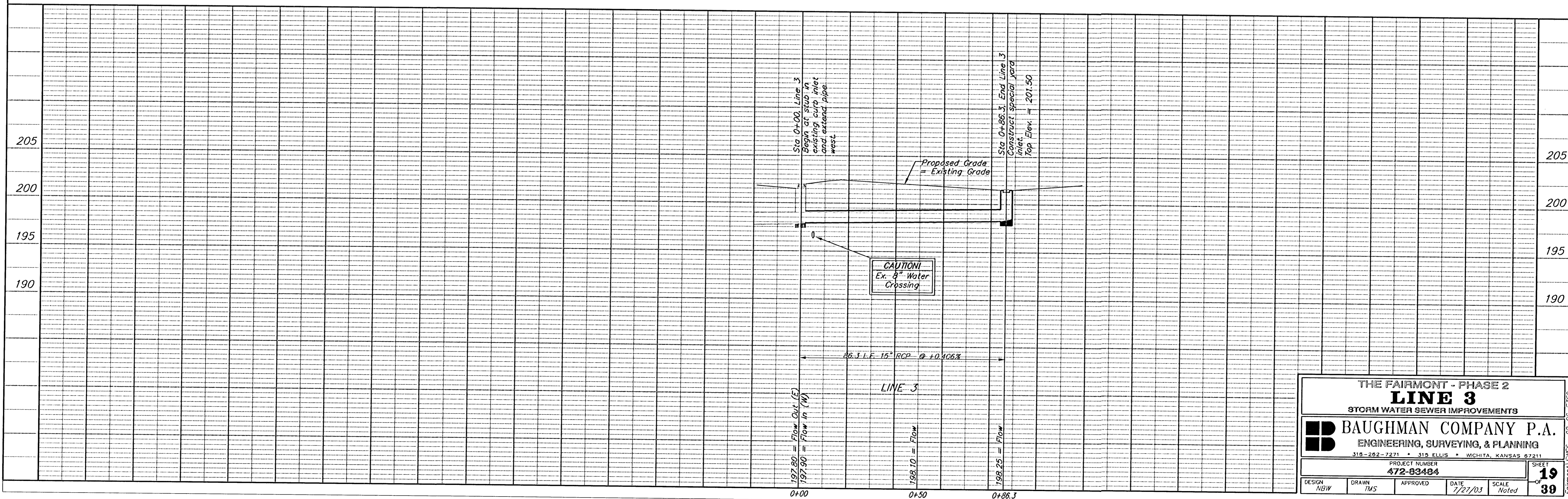
BM #1: "□" Cut on T.C., 12' west of east end of N curb return on the north drive entrance of the Church of the Magdalen.  
Elev. = 190.48 (City Datum)

BM #2: RR spike on the west face of PP on the east side of 127th Street East, adjacent to the south line of The Fairmont Addition.  
Elev. = 187.25 (City Datum)

BM #3: RR spike on the east face of PP on the west side of 127th Street East, 37' N and 13' E of the NE corner of Lot 1, Block H, The Fairmont Addition.  
Elev. = 189.19 (City Datum)



Scale: 1" = 20' Horizontal  
1" = 5' Vertical  
• = Iron



THE FAIRMONT - PHASE 2 <b>LINE 3</b> STORM WATER SEWER IMPROVEMENTS				
<b>BAUGHMAN COMPANY P.A.</b> ENGINEERING, SURVEYING, & PLANNING <small>315-282-7271 • 315 ELLIS • WICHITA, KANSAS 67211</small>				
PROJECT NUMBER <b>472-83484</b>				SHEET <b>19</b> OF <b>39</b>
DESIGN NBW	DRAWN TMS	APPROVED	DATE 7/27/03	SCALE Noted

Fairmont SWSP 02-06-F-150