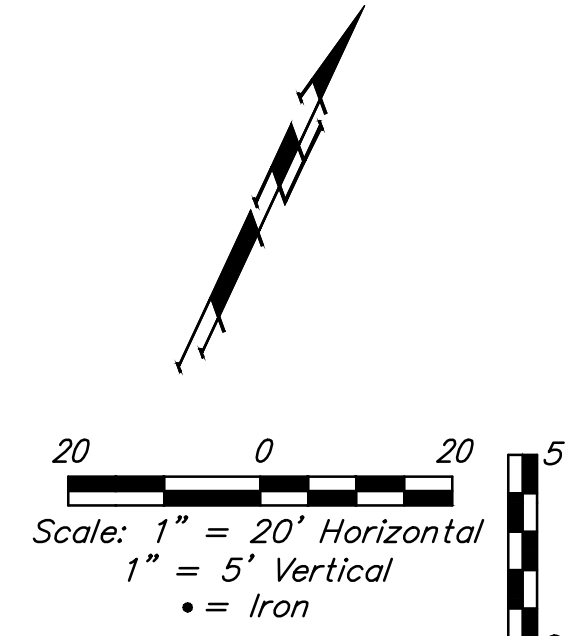
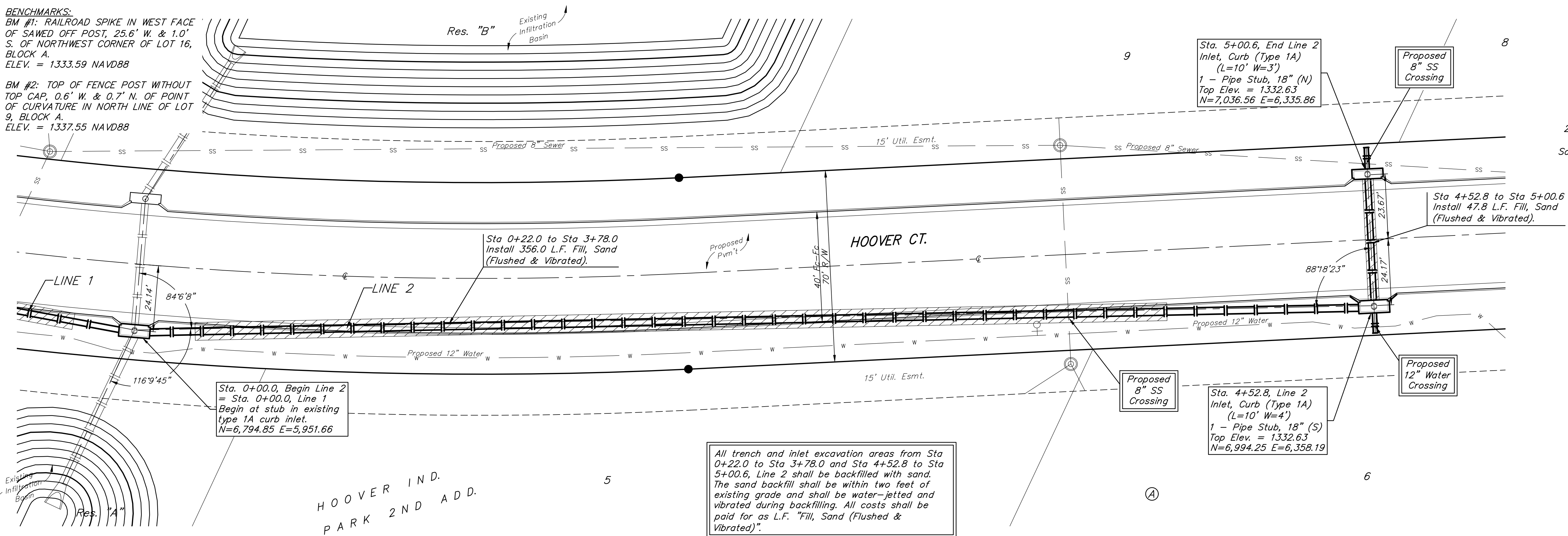


BENCHMARKS:
 BM #1: RAILROAD SPIKE IN WEST FACE OF SAWED OFF POST, 25.6' W. & 1.0' S. OF NORTHWEST CORNER OF LOT 16, BLOCK A.
 ELEV. = 1333.59 NAVD88

BM #2: TOP OF FENCE POST WITHOUT TOP CAP, 0.6' W. & 0.7' N. OF POINT OF CURVATURE IN NORTH LINE OF LOT 9, BLOCK A.
 ELEV. = 1337.55 NAVD88



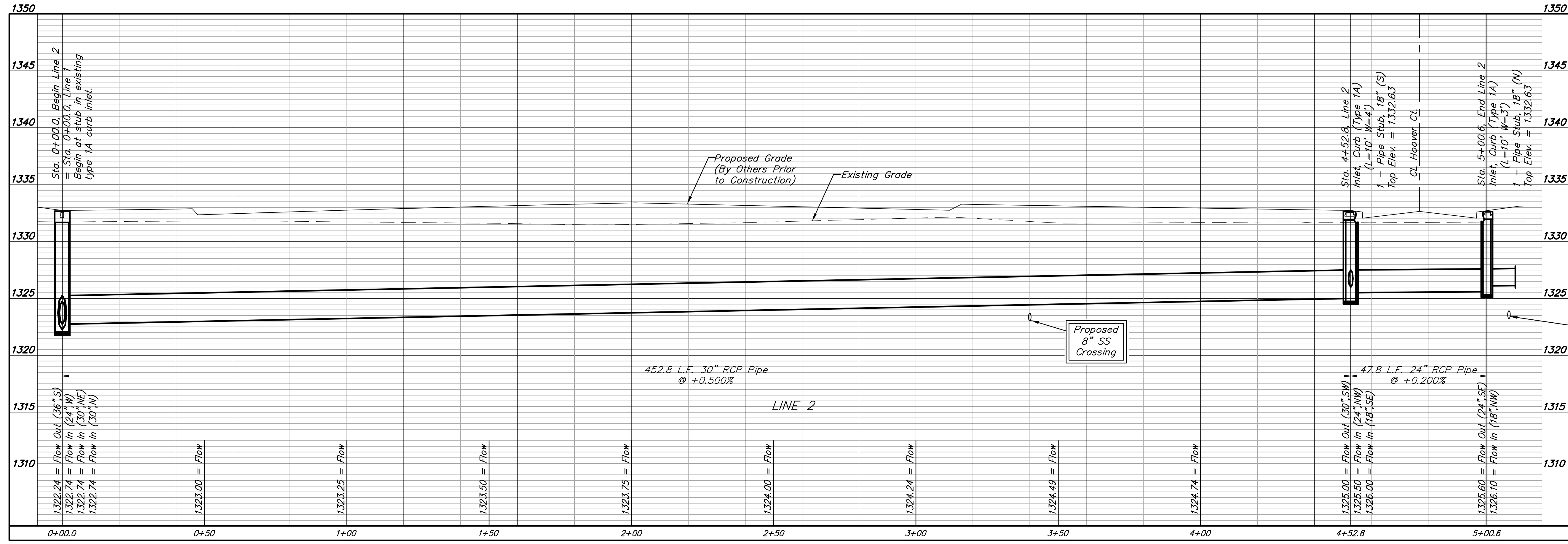
Sta. 0+00.0, Begin Line 2 = Sta. 0+00.0, Line 1
 Begin at stub in existing type 1A curb inlet.
 N=6,794.85 E=5,951.66

Sta. 0+22.0 to Sta. 3+78.0
 Install 356.0 L.F. Fill, Sand (Flushed & Vibrated).

Sta. 5+00.6, End Line 2 Inlet, Curb (Type 1A) (L=10' W=3')
 1 - Pipe Stub, 18" (N)
 Top Elev. = 1332.63
 N=7,036.56 E=6,335.86

Sta. 4+52.8, Line 2 Inlet, Curb (Type 1A) (L=10' W=4')
 1 - Pipe Stub, 18" (S)
 Top Elev. = 1332.63
 N=6,994.25 E=6,358.19

All trench and inlet excavation areas from Sta. 0+22.0 to Sta. 3+78.0 and Sta. 4+52.8 to Sta. 5+00.6, Line 2 shall be backfilled with sand. The sand backfill shall be within two feet of existing grade and shall be water-jetted and vibrated during backfilling. All costs shall be paid for as L.F. "Fill, Sand (Flushed & Vibrated)".



1350
1345
1340
1335
1330
1325
1320
1315
1310

0+00.0 0+50 1+00 1+50 2+00 2+50 3+00 3+50 4+00 4+52.8 5+00.6

HOOPER INDUSTRIAL PARK 2ND ADD.
LINE 2
 STREET & SWS IMPROVEMENTS

Baughman Company, P.A.
 ENGINEERING, ARCHITECTURE, PLANNING, LANDSCAPE ARCHITECTURE
 115 E. WILSON ST., SUITE 201, PHILADELPHIA, PA 19106
 Design: NSW Drawn: TMS Approval: DMG/YSR Date: 07/18

SHEET **6** OF **24**