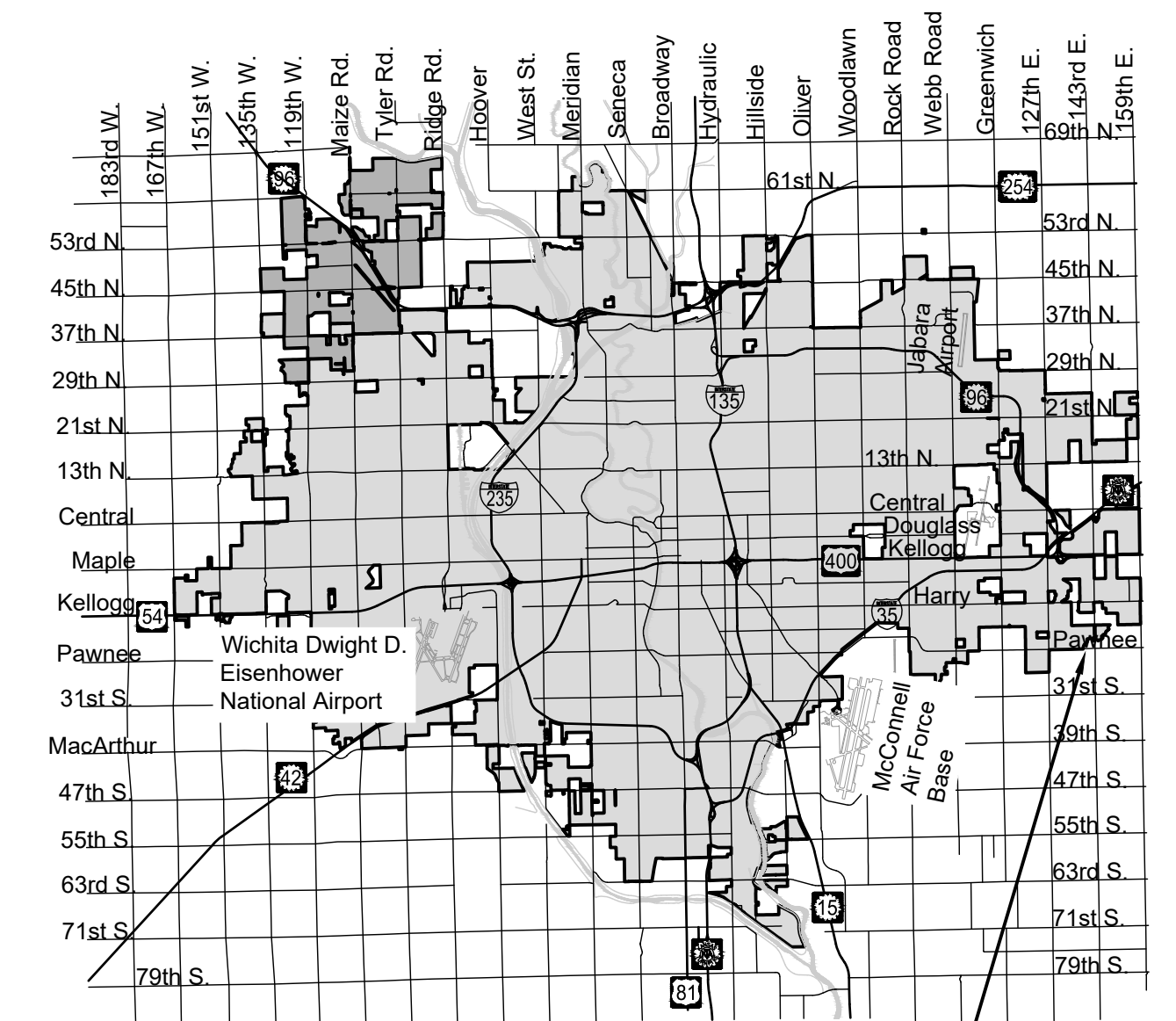


GENERAL NOTES:

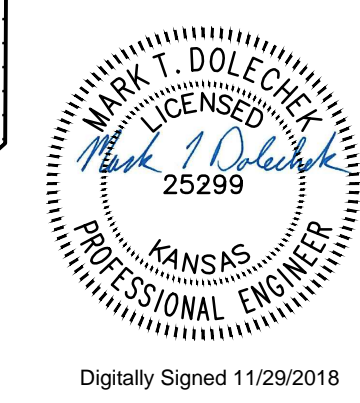
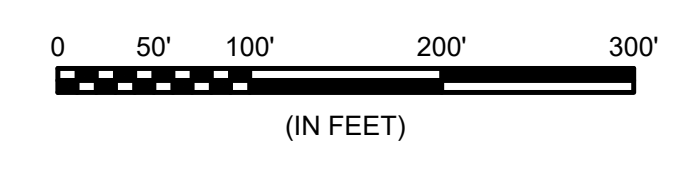
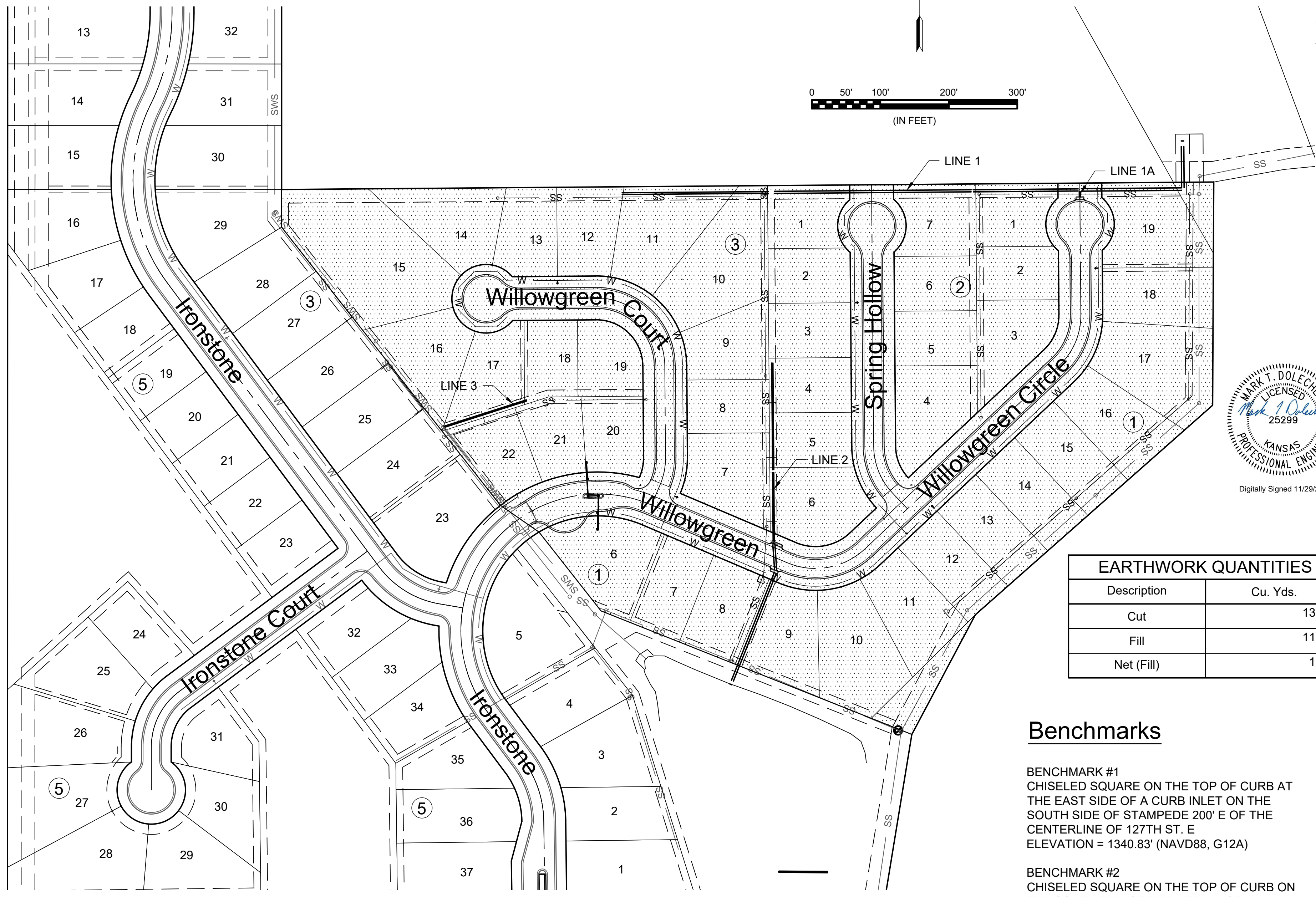
- The Contractor shall comply with all applicable safety regulations. All construction shall be completed following current City Standard Specifications and Special Provisions.
- Contractor will be required to provide notice to utility companies a minimum of seventy-two (72) hours prior to any excavation, as follows:
 Kansas One-Call 687-2470
 The Contractor must notify the following in case of an emergency:
 AT&T 1-800-246-8464
 Black Hills Energy 1-800-694-8989
 City of Wichita Water & Sewer Dept. 1-316-219-8921
 City of Wichita Stormwater 1-316-268-4090
 City of Wichita Traffic 1-316-268-4034
 Cox Communications 1-888-249-3530
 Kansas Gas Service 1-888-482-4950
 Unified School District 259 1-316-973-2244
 Westar Energy 1-800-544-4857
- Utility service lines, poles, etc. are to be adjusted as necessary by others prior to construction unless the plans specifically call for their adjustment by the Contractor or unless the plans specifically identify a utility to be adjusted by its owner during construction. Existing utilities and their location, as shown on the plans, represent the best information obtainable for design. The Contractor will be required to work around existing utilities within the right-of-way which do not conflict with proposed construction.
- Rubble from the removal of miscellaneous structures and excess excavation which is to be wasted shall be disposed of on sites to be provided by the Contractor. These sites shall be approved by the Engineer as to suitability, appearance and site location. Locations, in the opinion of the Engineer, that will leave an unsightly appearance will not be approved. All disposal sites must be approved by the Kansas Department of Health and Environment. Material either stockpiled or disposed of in a flood plain will require a Kansas State Board of Agriculture permit. Any material dumped in waters of the United States or wetlands is subject to U.S. Corps. of Engineers permitting regulations. Any material buried or stockpiled beyond approved construction limits will require additional archaeological investigations unless buried in a previously approved borrow location.
- Trees and shrubs in public right-of-way which are in direct conflict with proposed new construction shall be removed by the Contractor with the Engineer's approval. Trees and shrubs which are not in direct conflict with proposed new construction shall be saved and protected from damage.
- The Contractor shall give all property owners and/or tenants of developed property abutting the construction of this project a minimum of ten (10) days notice prior to start of construction.
- The Contractor shall be responsible for preserving property irons. The Contractor will be required to re-establish any property irons which are damaged or destroyed by his construction operations. Such irons shall be re-established by a licensed land surveyor in accordance with state laws.
- If traffic will be impacted by construction, a traffic control plan must be submitted and approved by the City Traffic Engineer, Brian Coon at traffic@wichita.gov before construction can begin. The Contractor shall be responsible for all traffic control measures to facilitate construction. All construction zone markings and signage shall conform to the latest version of the Manual on Uniform Traffic Control Devices (MUTCD) as published by the US Dept. of Transportation, Federal Highway Administration. All costs associated with construction markings and signage shall be the Contractors responsibly.
- All elevations shown are NAVD 88.
- All areas disturbed during construction that will not be under proposed pavement shall be restored to match existing conditions.
- The Contractor shall protect from damage and support existing utilities through constructions as approved by the utility owner and the Engineer at the contractors expense.
- Contractor shall limit the extent of trench openings overnight and weekends to less than 50 feet.
- Any sidewalk, drive approach, curb, or street pavement removed to construct project must have a pavement cut permit and be replaced by the City contractor. Permits can be obtained by calling 316-268-4501 or 316-268-4480.
- No shrink or swell factors have been applied to the earthwork quantities shown on this project. All earthwork quantities are based on raw surface volume comparisons.
- Excess dirt generated from construction of sanitary sewer shall be placed, by others, on Lots 15-17, Block 1, and used by Contractor for grading.
- Excess dirt generated from installation of underground utilities that cannot be incorporated into the grading is to remain on site and be stockpiled on Lots 10 & 11, Block 3, outside of easements and Right-of-Way.
- Sumps are not required at the bottom of storm sewer structures unless specifically noted.

STORM WATER DRAIN 440 to serve Sierra Hills 2nd - Phase 4 CITY OF WICHITA, KANSAS

Gary Janzen, P.E. City Engineer
Project Number 468-85339
O.C.A. NO. 751584



Vicinity Map PROJECT LOCATION



Sheet List Table	
Sheet Number	Sheet Title
1	Cover Sheet
2	SWS Line 1 & 1A
3	SWS Line 1
4	SWS Line 2
5	SWS Line 3
6	Pre-Cast SWS MH
7	MH Frame & Cover
8	Type 1A CB Inlet 5-10
9	Type 1A CB Inlet 15
10	Pavement Underdrain
11	Reinf Conc SWS MH
12	Backyard Inlet
13	End Section Detail
14	Erosion Control Plan SWS
15	Grading Plan
16	Four-Corner Lot Grading SWS
17	Typical Sections
18	Bubble Map
19	Sierra Hills 2nd Plat

Erosion Control Details are available to download from the City of Wichita website:
<http://www.wichita.gov/PWU/Pages/Regulations.aspx>

EARTHWORK QUANTITIES	
Description	Cu. Yds.
Cut	13,800
Fill	11,850
Net (Fill)	1,950

STORM SEWER QUANTITIES	
36" RCP	221 LF
30" RCP	670 LF
24" RCP	222 LF
15" RCP	407 LF

Benchmarks

BENCHMARK #1
CHISELED SQUARE ON THE TOP OF CURB AT THE EAST SIDE OF A CURB INLET ON THE SOUTH SIDE OF STAMPEDE 200' E OF THE CENTERLINE OF 127TH ST. E
ELEVATION = 1340.83' (NAVD88, G12A)

BENCHMARK #2
CHISELED SQUARE ON THE TOP OF CURB ON THE SOUTH END OF THE MEDIAN OF IRONSTONE, 55' N OF THE CENTERLINE OF PAWNEE, SIERRA HILLS, 2ND ADDITION
ELEVATION = 1320.03 (NAVD88, G12A)

November 2018

PLANS PREPARED BY

