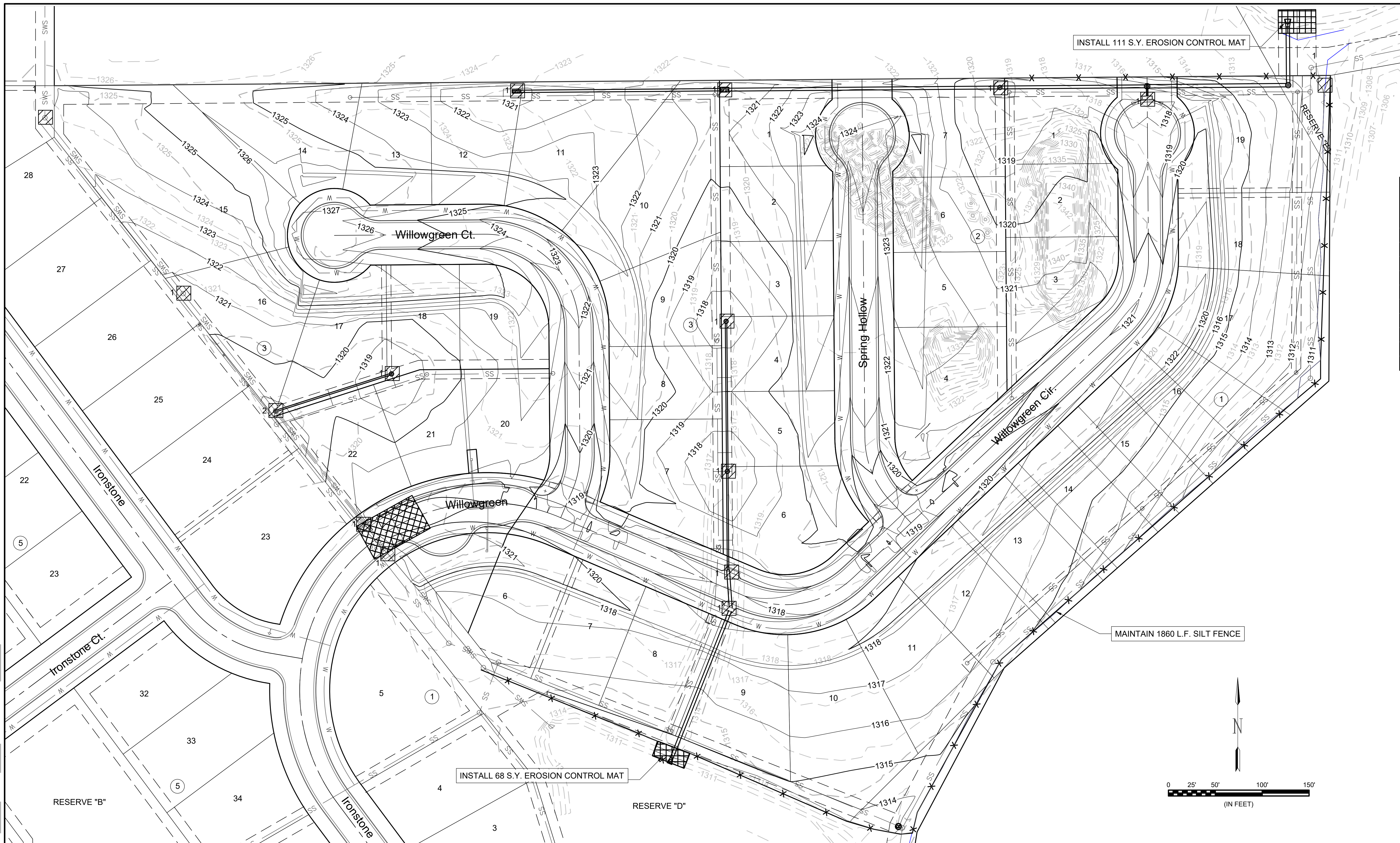


File: L:\2018\18267013 - Sierra Hills 2nd Phase 4\Drawings\C3D\Erosion Control Map.dwg Last Save: 11/28/2018 4:14 PM Last saved by: MTDolechek
 Last plotted by: Dolechek, Mark T. Plot Style: ---- Plot Scale: 1:2,584.9 Plot Date: 11/29/2018 7:59 AM Plotter used: None



- 1 INSTALL Inlet Protection (14 Ea.)
- 2 MAINTAIN Inlet Protection (1 Ea.)
- MAINTAIN Silt Fence (1860 L.F.)
- MAINTAIN Construction Entrance (1 Ea.)
- INSTALL Erosion Control Mat (179 S.Y.)

All areas disturbed from construction shall be seeded. All seeding, fertilizing and mulch shall be per City of Wichita Specifications. Lots shall be temporarily seeded. Right of way, easements, and reserves shall be permanently seeded.



© 2018 GARVER, LLC
 THIS DOCUMENT, ALONG WITH THE IDEAS AND DESIGNS CONVEYED HEREIN, SHALL BE CONSIDERED INSTRUMENTS OF PROFESSIONAL SERVICE AND ARE PROPERTY OF GARVER, LLC. ANY USE, REPRODUCTION, OR DISTRIBUTION OF THIS DOCUMENT, ALONG WITH THE IDEAS AND DESIGN CONTAINED HEREIN, IS PROHIBITED UNLESS AUTHORIZED IN WRITING BY GARVER, LLC OR EXPLICITLY ALLOWED IN THE GOVERNING PROFESSIONAL SERVICES AGREEMENT FOR THIS WORK.

8535 E. 21st St. N.
 Suite 130
 Wichita, KS 67206
 (316) 264-8008



Digitally Signed 11/29/2018

REV.	DATE	DESCRIPTION	BY



CITY OF WICHITA
 WICHITA, KANSAS
 SIERRA HILLS 2nd ADD.
 PHASE 4 - SWS

Erosion Control Plan SWS

JOB NO.: 18267013
 DATE: NOV 2018
 DESIGNED BY: MTD
 DRAWN BY: CDJ

BAR IS ONE INCH ON ORIGINAL DRAWING
 0 25' 50' 100' 150'
 IF NOT ONE INCH ON THIS SHEET, ADJUST SCALES ACCORDINGLY.

DRAWING NUMBER

SHEET NUMBER **14** OF **19**