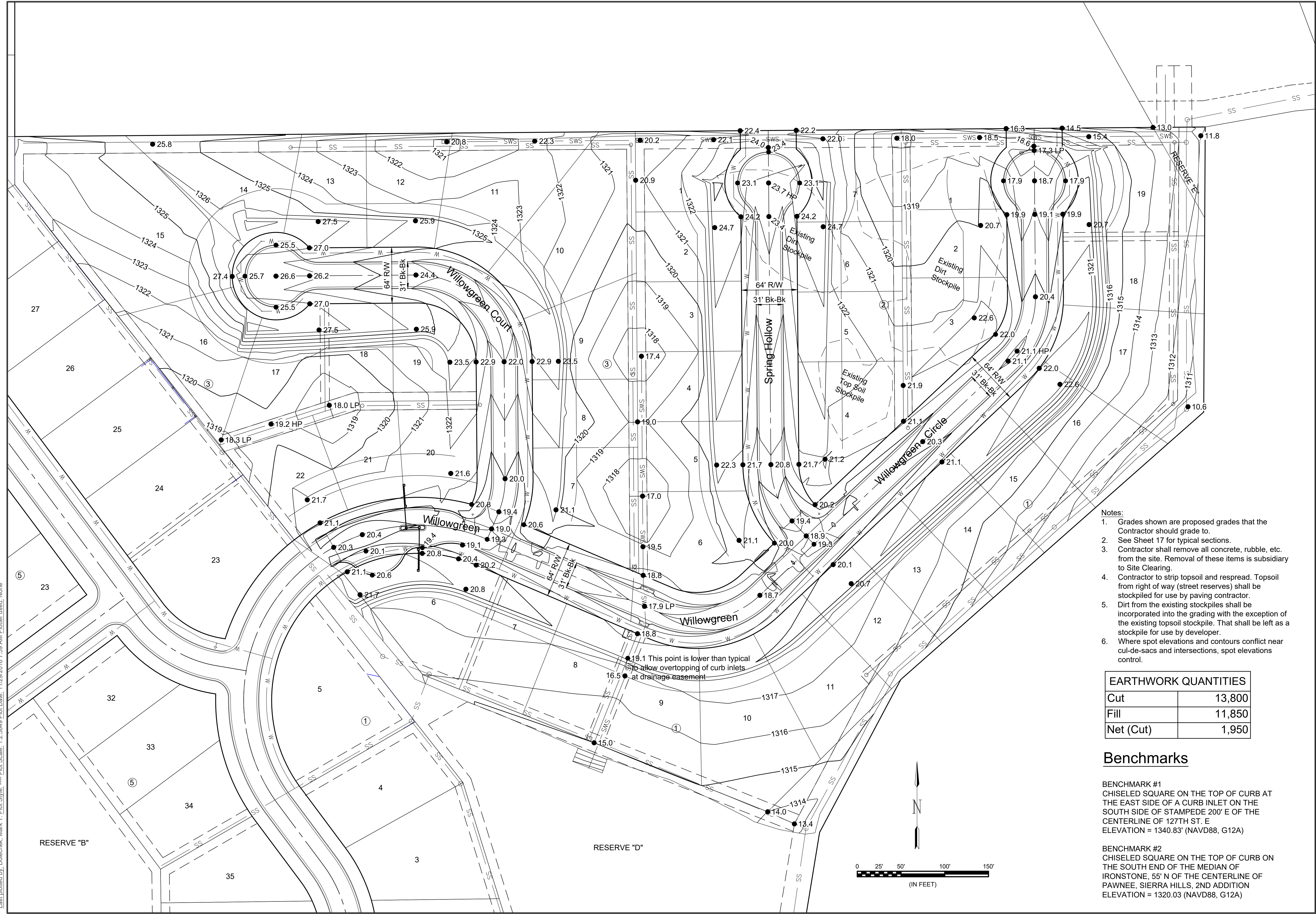




© 2018 GARVER, LLC
 THIS DOCUMENT, ALONG WITH THE IDEAS AND DESIGNS CONVEYED HEREIN, SHALL BE CONSIDERED INSTRUMENTS OF PROFESSIONAL SERVICE AND ARE PROPERTY OF GARVER, LLC. ANY USE, REPRODUCTION, OR DISTRIBUTION OF THIS DOCUMENT, ALONG WITH THE IDEAS AND DESIGNS CONTAINED HEREIN, IS PROHIBITED UNLESS AUTHORIZED IN WRITING BY GARVER, LLC OR EXPLICITLY ALLOWED IN THE GOVERNING PROFESSIONAL SERVICES AGREEMENT FOR THIS WORK.



Digitally Signed 11/29/2018



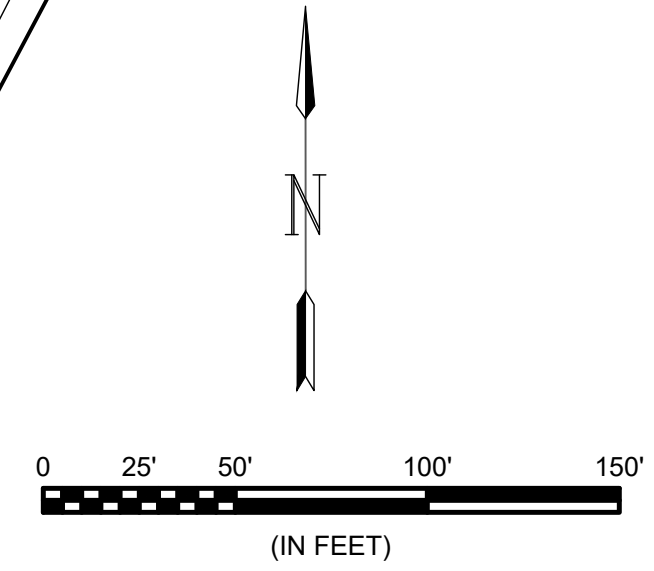
- Notes:**
- Grades shown are proposed grades that the Contractor should grade to.
 - See Sheet 17 for typical sections.
 - Contractor shall remove all concrete, rubble, etc. from the site. Removal of these items is subsidiary to Site Clearing.
 - Contractor to strip topsoil and respread. Topsoil from right of way (street reserves) shall be stockpiled for use by paving contractor.
 - Dirt from the existing stockpiles shall be incorporated into the grading with the exception of the existing topsoil stockpile. That shall be left as a stockpile for use by developer.
 - Where spot elevations and contours conflict near cul-de-sacs and intersections, spot elevations control.

EARTHWORK QUANTITIES	
Cut	13,800
Fill	11,850
Net (Cut)	1,950

Benchmarks

BENCHMARK #1
 CHISELED SQUARE ON THE TOP OF CURB AT THE EAST SIDE OF A CURB INLET ON THE SOUTH SIDE OF STAMPEDE 200' E OF THE CENTERLINE OF 127TH ST. E
 ELEVATION = 1340.83' (NAVD88, G12A)

BENCHMARK #2
 CHISELED SQUARE ON THE TOP OF CURB ON THE SOUTH END OF THE MEDIAN OF IRONSTONE, 55' N OF THE CENTERLINE OF PAWNEE, SIERRA HILLS, 2ND ADDITION
 ELEVATION = 1320.03 (NAVD88, G12A)



File: L:\2018\18267013 - Sierra Hills 2nd Phase 4\Drawings\C3D\SWS\Grading Plan.dwg Last Save: 11/28/2018 2:02 PM Last saved by: MTDolechek
 Last plotted by: Dolechek, Mark T. Plot Style: --- Plot Scale: 1:2,500 Plot Date: 11/29/2018 7:59 AM Plotter used: None

REV.	DATE	DESCRIPTION	BY



CITY OF WICHITA
 WICHITA, KANSAS

SIERRA HILLS 2nd ADD.
 PHASE 4 - SS

Grading Plan

JOB NO.: 18267013
 DATE: NOV 2018
 DESIGNED BY: MTD
 DRAWN BY: CDJ

BAR IS ONE INCH ON ORIGINAL DRAWING
 0 1" IF NOT ONE INCH ON THIS SHEET, ADJUST SCALES ACCORDINGLY.

DRAWING NUMBER

SHEET NUMBER **15** OF **19**