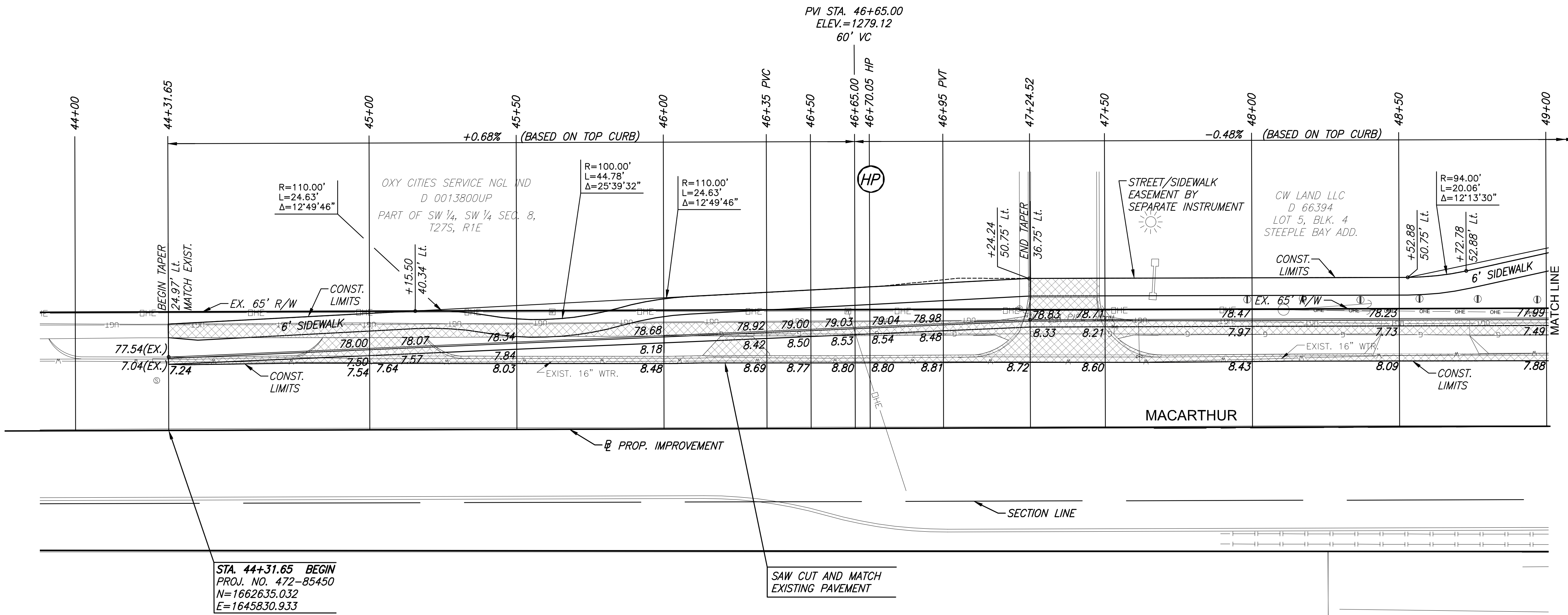
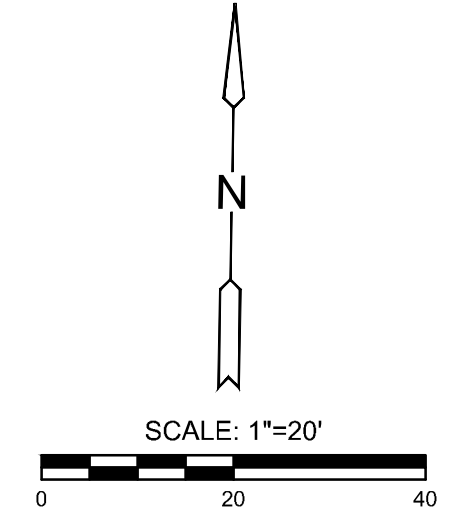


PLOTTED: Friday, December 28, 2018 @ 12:49PM

J:\PROJECTS\2017\1701010143_LANGE_STEEPLE_BAY_1743_CADD\SHOTS\05_CIVIL\MACARTHUR_STREET IMPROVEMENTS\1743_MACARTHUR_EP01.DWG



MACARTHUR ROAD IMPROVEMENTS FOR
STEEPLE BAY ADDITION
WICHITA, KANSAS

©2018 MKEC Engineering All Rights Reserved
www.mkec.com
These drawings and their contents, including, but not limited to, all concepts, designs, & ideas are the exclusive property of MKEC Engineering (MKEC), and may not be used or reproduced in any way without the express consent of MKEC.




PAVING PLANS
STA. 44+31.66 TO
STA. 49+50.00

PROJECT NO.	472-85450
DATE	1/02/19
SCALE	1"=20'
DESIGNED	JRA
DRAWN	WNJ
CHECKED	JRA

NO.	REVISION	DATE

SHEET NO.
3 OF 38

LEGEND

-  Pavement Removal
-  Construct Wheelchair Ramp
See Sh. No. 10
-  Storm Sewer Removal