

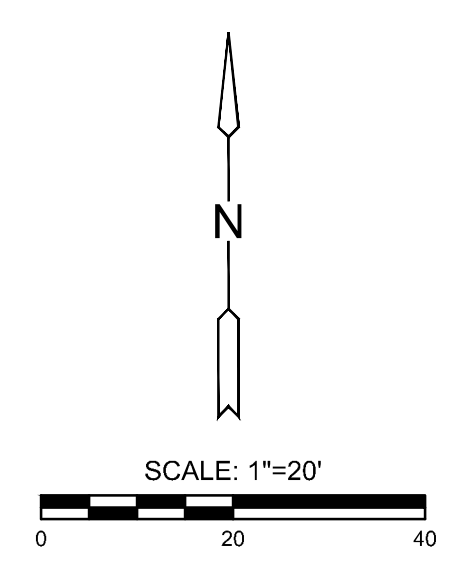
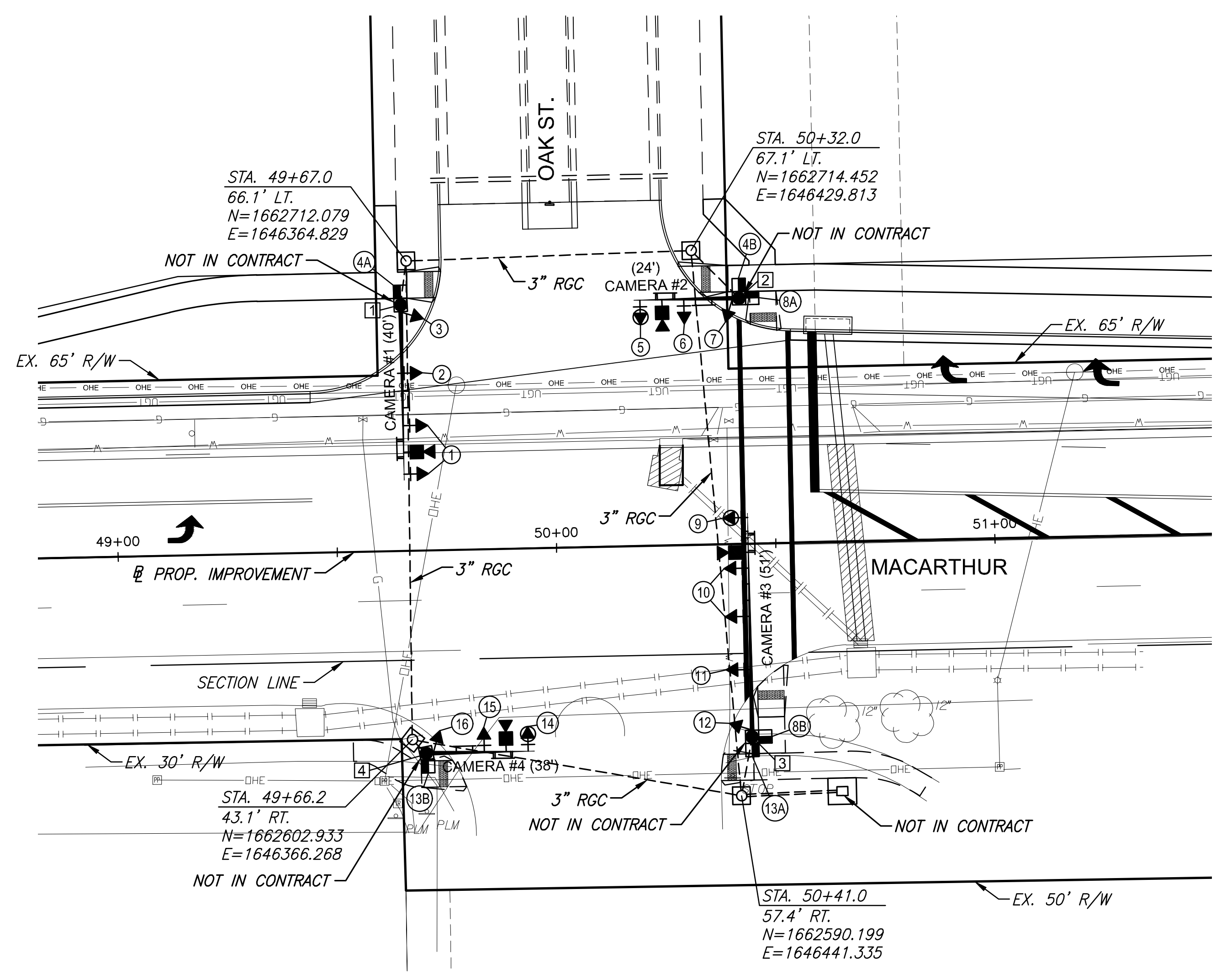
J:\PROJECTS\2017\1701010143_LANGE_STEEPLE_BAY_17143_CADD\SHOTS\05 CIVIL\MACARTHUR STREET IMPROVEMENTS\17143_MACARTHUR_TP01.DWG
 PLOTTED: Friday, December 28, 2018 @ 12:01PM

GENERAL NOTES

- CONDUIT SHALL BE JACKED, BORED OR DIRECTIONAL DRILLED UNDER EXISTING PAVEMENT AND UNDER NEW PAVEMENT THAT HAS BEEN PLACED PRIOR TO CONDUIT INSTALLATION.
- PLACEMENT OF SERVICE/JUNCTION BOXES, CONDUIT RUNS AND CONTROLLER ARE TYPICAL AND MAY BE ADJUSTED AS DIRECTED BY THE ENGINEER TO FACILITATE INSTALLATION.
- TRAFFIC SIGNAL POLES, MAST ARMS, ETC. ARE SHOWN FOR REFERENCE ONLY. THIS PROJECT WILL ONLY INSTALL THE ITEMS IDENTIFIED IN THE RECAPITULATION OF QUANTITIES.

LEGEND

- | | | | |
|---|--|-----|--|
| ○ | STEEL TRAFFIC SIGNAL POLE (JOINT USE) | □ | VEHICLE DETECTION ZONE |
| ● | STEEL TRAFFIC SIGNAL POLE (STD. POLE) | ① | DETECTOR NUMBER |
| ⊙ | ALUMINUM TRAFFIC SIGNAL POLE (PEDESTAL) | --- | RIGID GALVANIZED CONDUIT (RGC) |
| → | TRAFFIC SIGNAL INDICATION (TYPE A) W/BACKPLATE | TT | OVERHEAD STREET NAME SIGN |
| → | TRAFFIC SIGNAL INDICATION (TYPE C) W/BACKPLATE | TT | OVERHEAD SIGN R10-10 (LT. TURN YIELD ON GREEN) |
| → | MAST ARM SUSPENDED TRAFFIC SIGNAL | TT | WIND DAMPER |
| → | WAVETRONIX RADAR UNIT | PP | POWER POLE |
| □ | SERVICE BOX | ⊙ | METER BOX AND POWER DISCONNECT |
| □ | PEDESTRIAN INDICATION | ⊗ | CONTROLLER AND PAD |
| ① | POLE NUMBER | | |
| ① | SIGNAL NUMBER | | |



RECAPITULATION OF TRAFFIC SIGNAL QUANTITIES		
ITEM	UNIT	QUANTITY
CONDUIT 3" RGC	LIN. FT.	380
SERVICE BOX	EACH	4



MACARTHUR ROAD IMPROVEMENTS FOR
STEEPLE BAY ADDITION
 WICHITA, KANSAS

©2018
 MKEC Engineering
 All Rights Reserved
 www.mkec.com
 These drawings and their contents, including, but not limited to, all concepts, designs, & ideas are the exclusive property of MKEC Engineering (MKEC), and may not be used or reproduced in any way without the express consent of MKEC.

TRAFFIC SIGNAL PLAN - MACARTHUR AND OAK ST.

PROJECT NO.	472-85450	
DATE	1/02/19	
SCALE	1"=20'	
DESIGNED	DRAWN	CHECKED
JRA	WNJ	JRA

NO.	REVISION	DATE