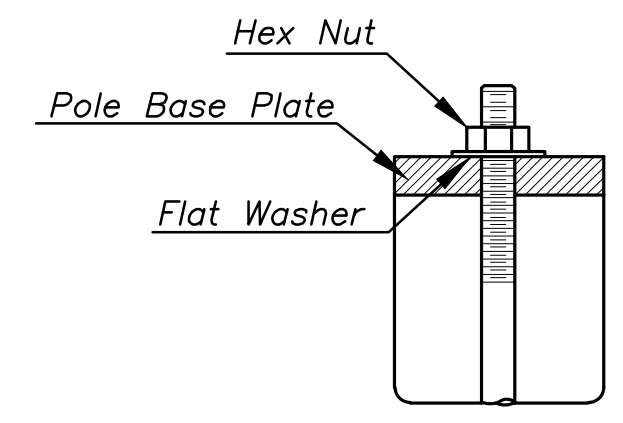
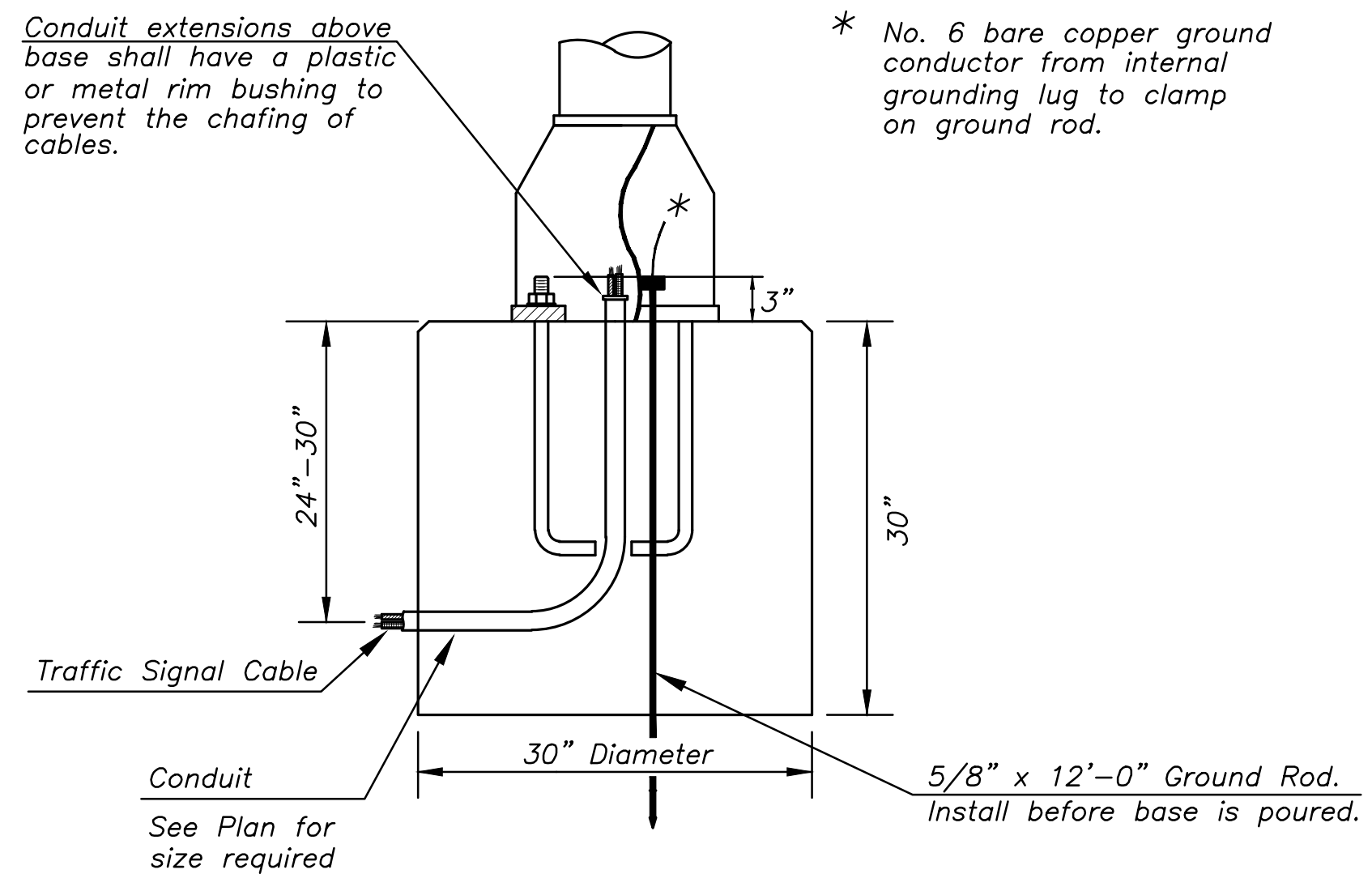
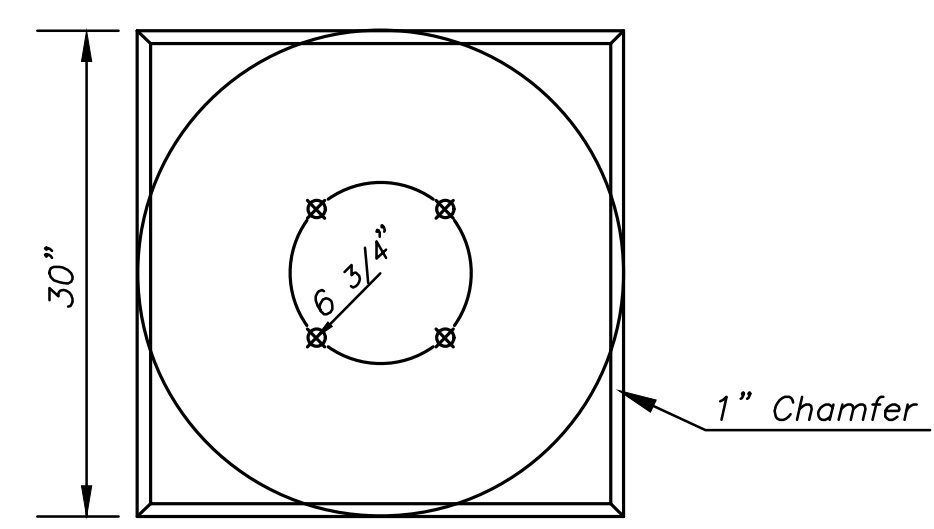


Use Keystone "No-Weld Number 1 Anti-Seize Compound" on all bolts & nuts.

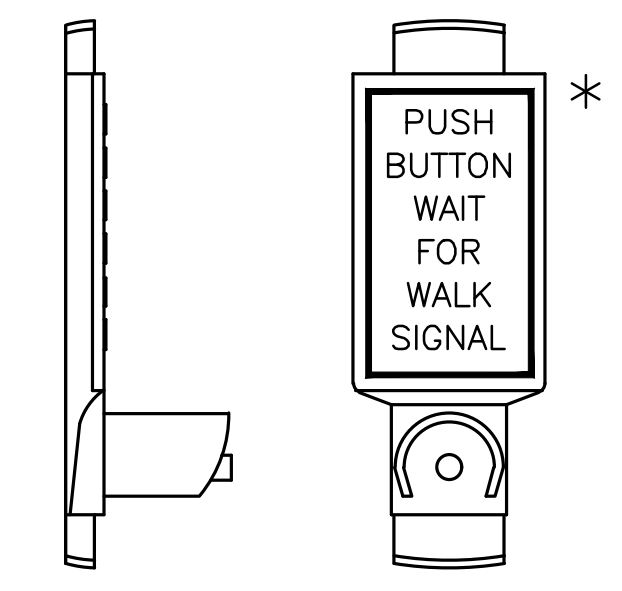


**ANCHOR BOLT  
DETAIL**



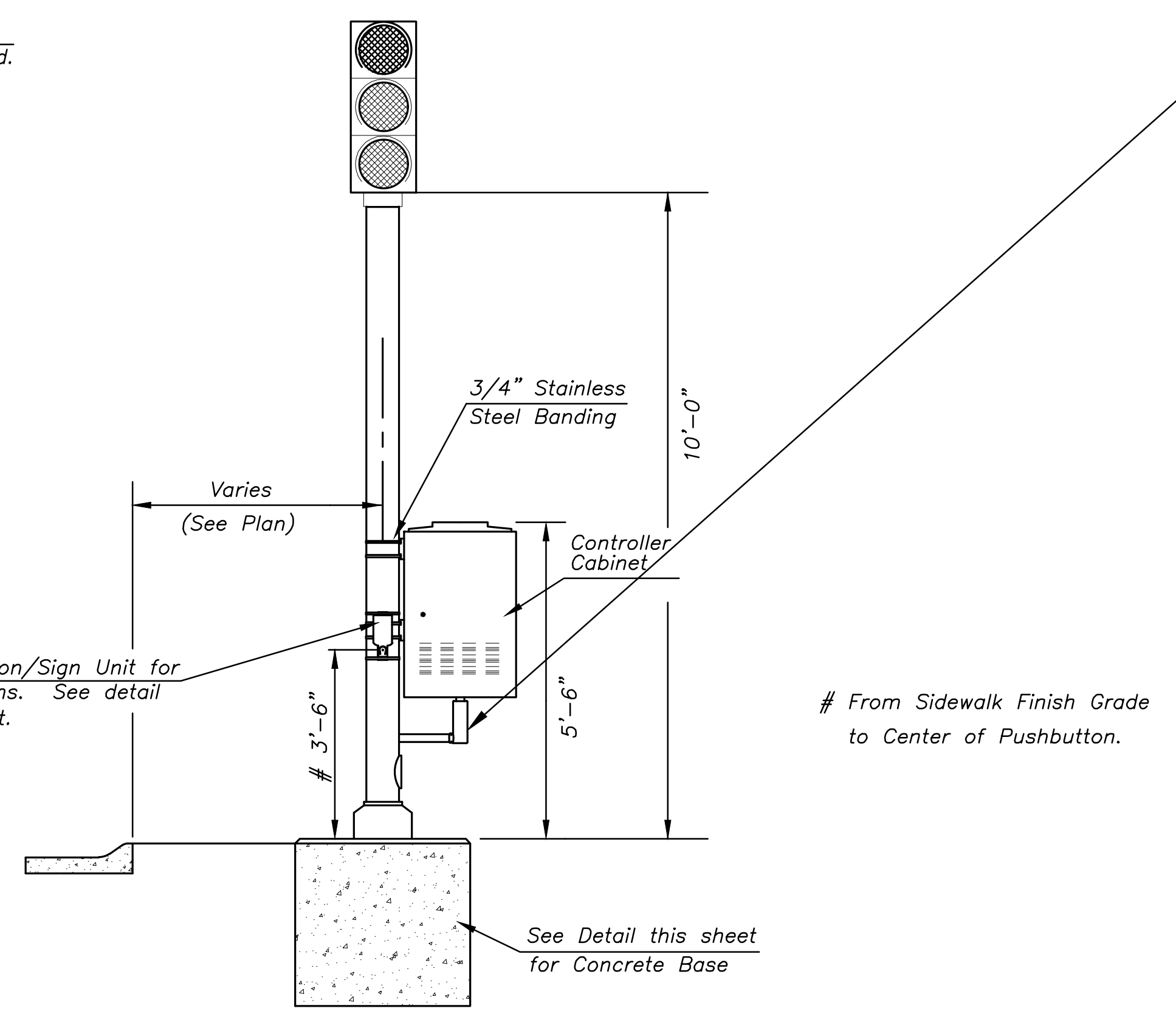
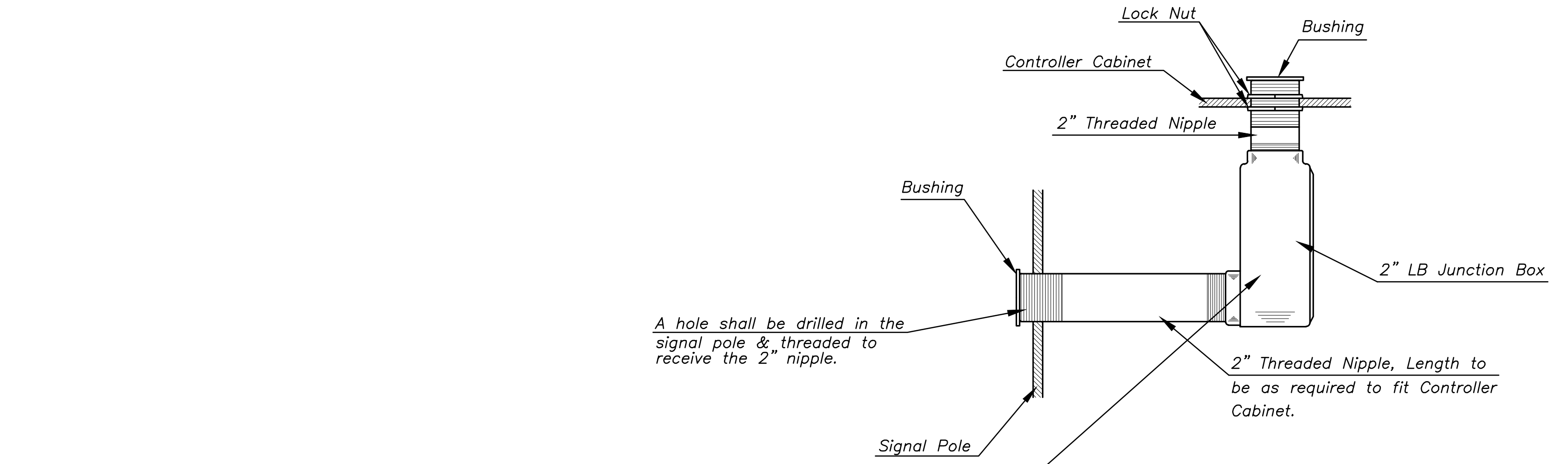
**CONCRETE BASE DETAIL**

\* NOTE: MESSAGE TO BE CAST WITH HOUSING (ONE PIECE)



**PEDESTRIAN PUSHBUTTON/SIGN  
UNIT DETAIL**

INSTALL PEDESTRIAN PUSHBUTTON UNDERNEATH CORRESPONDING PEDESTRIAN SIGNAL HEAD ON SIDE OF POLE NEAREST CROSSWALK. UNIT SHALL BE FIRMLY ATTACHED TO THE SIDE OF POLE WITH 3/4" STEEL BANDS. SHARP ENDS SHALL BE FOLDED UNDER TO PREVENT INJURY TO PEDESTRIANS.



**TRAFFIC SIGNAL PEDESTAL**



<b>TRAFFIC SIGNAL PEDESTAL &amp; CONCRETE BASE</b>		
TRAFFIC ENGINEER <b>PAUL GUNZELMAN, P.E.</b>		
PROJECT NUMBER 472-85450	OCA NUMBER 766423	DATE 05/1997
CITY ENGINEER'S OFFICE CITY HALL - SEVENTH FLOOR 455 NORTH MAIN STREET WICHITA, KANSAS 67202-1620 (316) 268-4501		SHEET <b>26 OF 38</b>