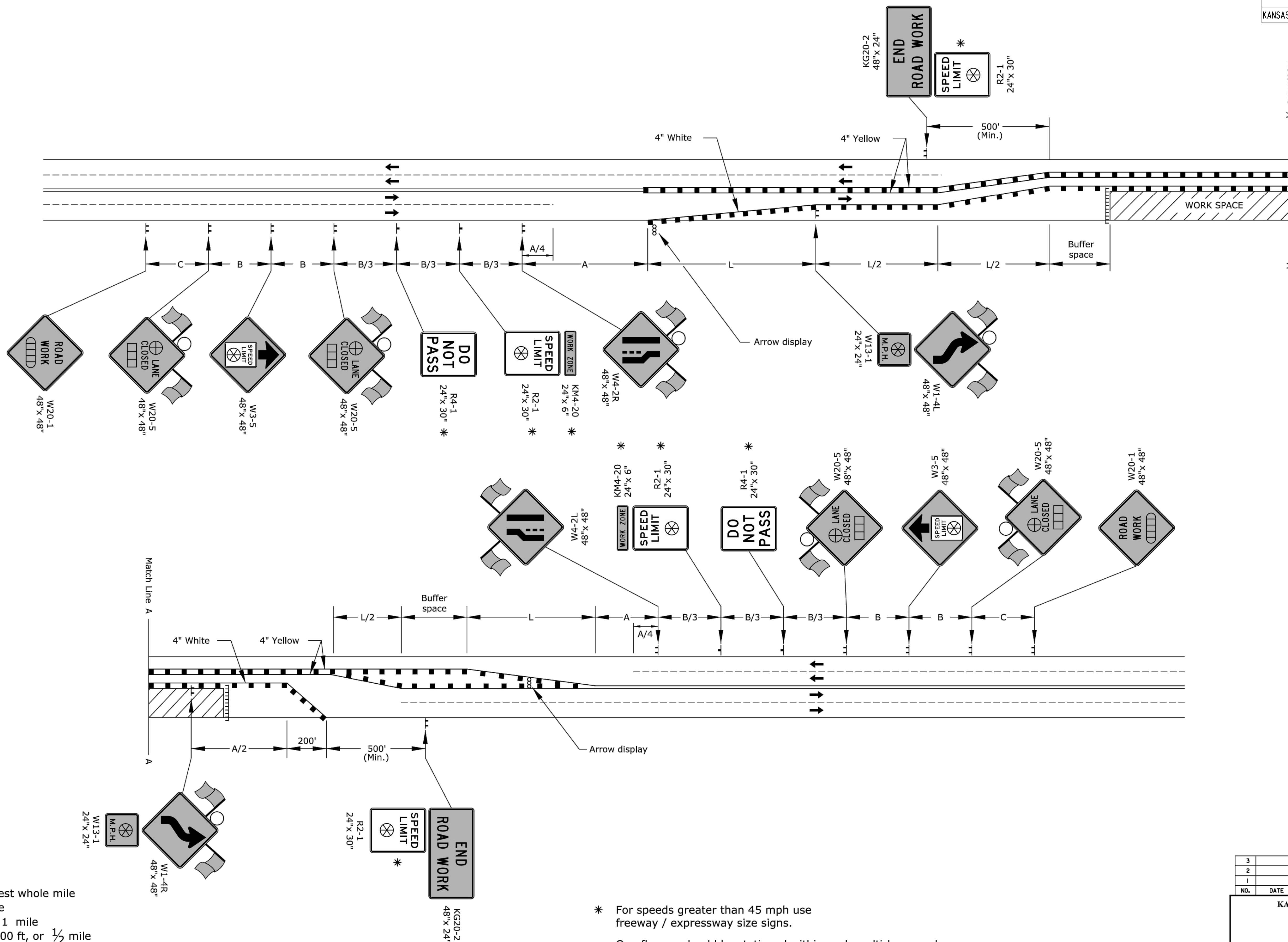


STATE	PROJECT NO.	YEAR	SHEET NO.	TOTAL SHEETS
KANSAS	472-85450	2019	34	38



- ||| Type 3 barricades
- X Length to the nearest whole mile
- Channelizing device
- Ahead, 1500 ft, or 1 mile
- Ahead, 1000 ft, 1500 ft, or 1/2 mile
- ⊕ Right or left
- ⊗ Speed to be determined by the Engineer
- Type "A" low intensity warning light

\* For speeds greater than 45 mph use freeway / expressway size signs.

One flagger should be stationed within each multi-lane roadway activity area where work is in a closed lane adjacent to traffic and not separated by a concrete safety barrier system.

3				
2				
1				
NO.	DATE	REVISIONS	BY	APP'D
KANSAS DEPARTMENT OF TRANSPORTATION				
TRAFFIC CONTROL CROSSOVER ON UNDIVIDED ROADWAY				
TE748				
DESIGNED	B.A.H.	APP'D	06/01/15	Kristina Ericksen
DESIGN CK.	DETAIL CK.	QUAN. CK.	TRACED	TRACE CK.

KDOT Graphics Certified 06-01-2015

File: te748.dgn