

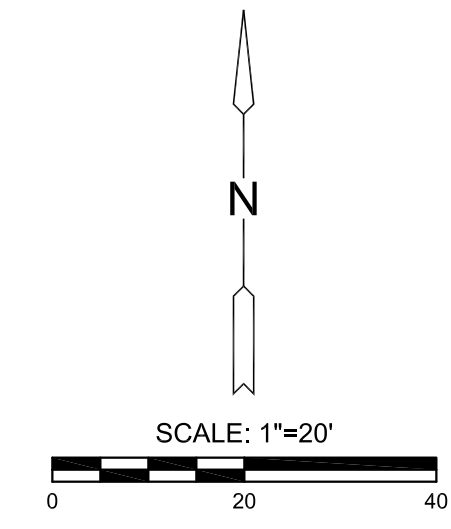
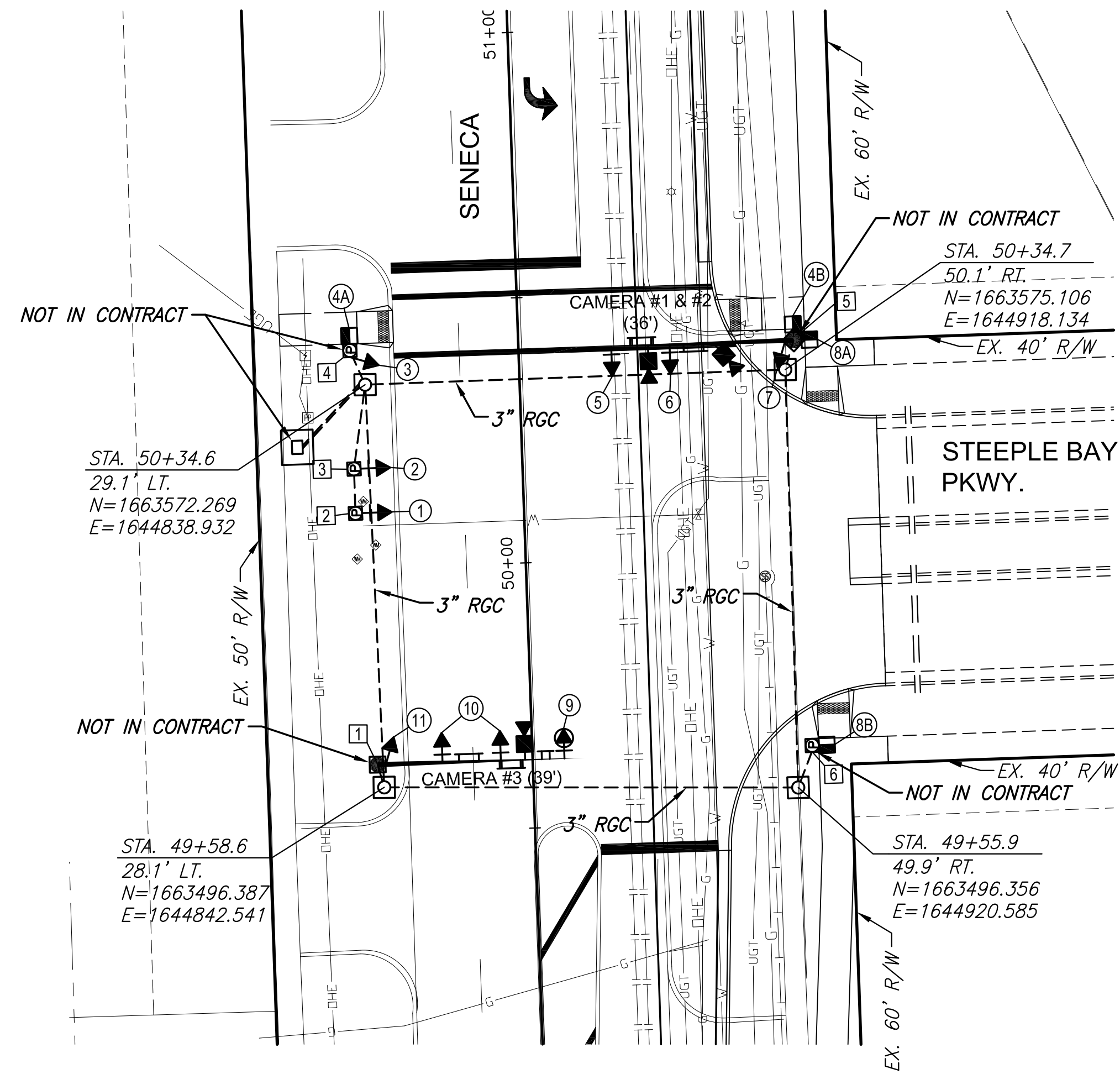
J:\PROJECTS\2017\1701010143\_LANGE\_STEEPLE BAY\_17143\_CADD\SHOTS\06 CIVIL\SENECA STREET IMPROVEMENTS\17143\_SENECA\_TPO.DWG  
 PLOTTED: Friday, December 28, 2018 @ 10:20AM

**GENERAL NOTES**

- CONDUIT SHALL BE JACKED, BORED OR DIRECTIONAL DRILLED UNDER EXISTING PAVEMENT AND UNDER NEW PAVEMENT THAT HAS BEEN PLACED PRIOR TO CONDUIT INSTALLATION.
- PLACEMENT OF SERVICE/JUNCTION BOXES, CONDUIT RUNS AND CONTROLLER ARE TYPICAL AND MAY BE ADJUSTED AS DIRECTED BY THE ENGINEER TO FACILITATE INSTALLATION.
- TRAFFIC SIGNAL POLES, MAST ARMS, ETC. ARE SHOWN FOR REFERENCE ONLY. THIS PROJECT WILL ONLY INSTALL THE ITEMS IDENTIFIED IN THE RECAPITULATION OF QUANTITIES.

**LEGEND**

- |   |  |     |  |
|---|--|-----|--|
| ○ | STEEL TRAFFIC SIGNAL POLE (JOINT USE)          | □   | VEHICLE DETECTION ZONE                         |
| ● | STEEL TRAFFIC SIGNAL POLE (STD. POLE)          | ①   | DETECTOR NUMBER                                |
| Ⓟ | ALUMINUM TRAFFIC SIGNAL POLE (PEDESTAL)        | --- | RIGID GALVANIZED CONDUIT (RGC)                 |
| → | TRAFFIC SIGNAL INDICATION (TYPE A) W/BACKPLATE | TT  | OVERHEAD STREET NAME SIGN                      |
| → | TRAFFIC SIGNAL INDICATION (TYPE C) W/BACKPLATE | TT  | OVERHEAD SIGN R10-10 (LT. TURN YIELD ON GREEN) |
| → | MAST ARM SUSPENDED TRAFFIC SIGNAL              | TT  | WIND DAMPER                                    |
| → | WAVETRONIX RADAR UNIT                          | PP  | POWER POLE                                     |
| □ | SERVICE BOX                                    | Ⓜ   | METER BOX AND POWER DISCONNECT                 |
| □ | PEDESTRIAN INDICATION                          | Ⓜ   | CONTROLLER AND PAD                             |
| ① | POLE NUMBER                                    |     |  |
| ① | SIGNAL NUMBER                                  |     |  |



RECAPITULATION OF TRAFFIC SIGNAL QUANTITIES		
ITEM	UNIT	QUANTITY
CONDUIT 3" RGC	LIN. FT.	315
SERVICE BOX	EACH	4



SENECA STREET IMPROVEMENTS FOR  
**STEEPLE BAY ADDITION**  
 WICHITA, KANSAS

©2018 MKEC Engineering All Rights Reserved  
 These drawings and their contents, including, but not limited to, all concepts, designs, & ideas are the exclusive property of MKEC Engineering (MKEC), and may not be used or reproduced in any way without the express consent of MKEC.

**TRAFFIC SIGNAL PLAN - SENECA AND STEEPLE BAY PKWY.**

PROJECT NO.	472-85451	
DATE	1/02/19	
SCALE	1"=20'	
DESIGNED	DRAWN	CHECKED
JRA	RAM	JRA

NO.	REVISION	DATE