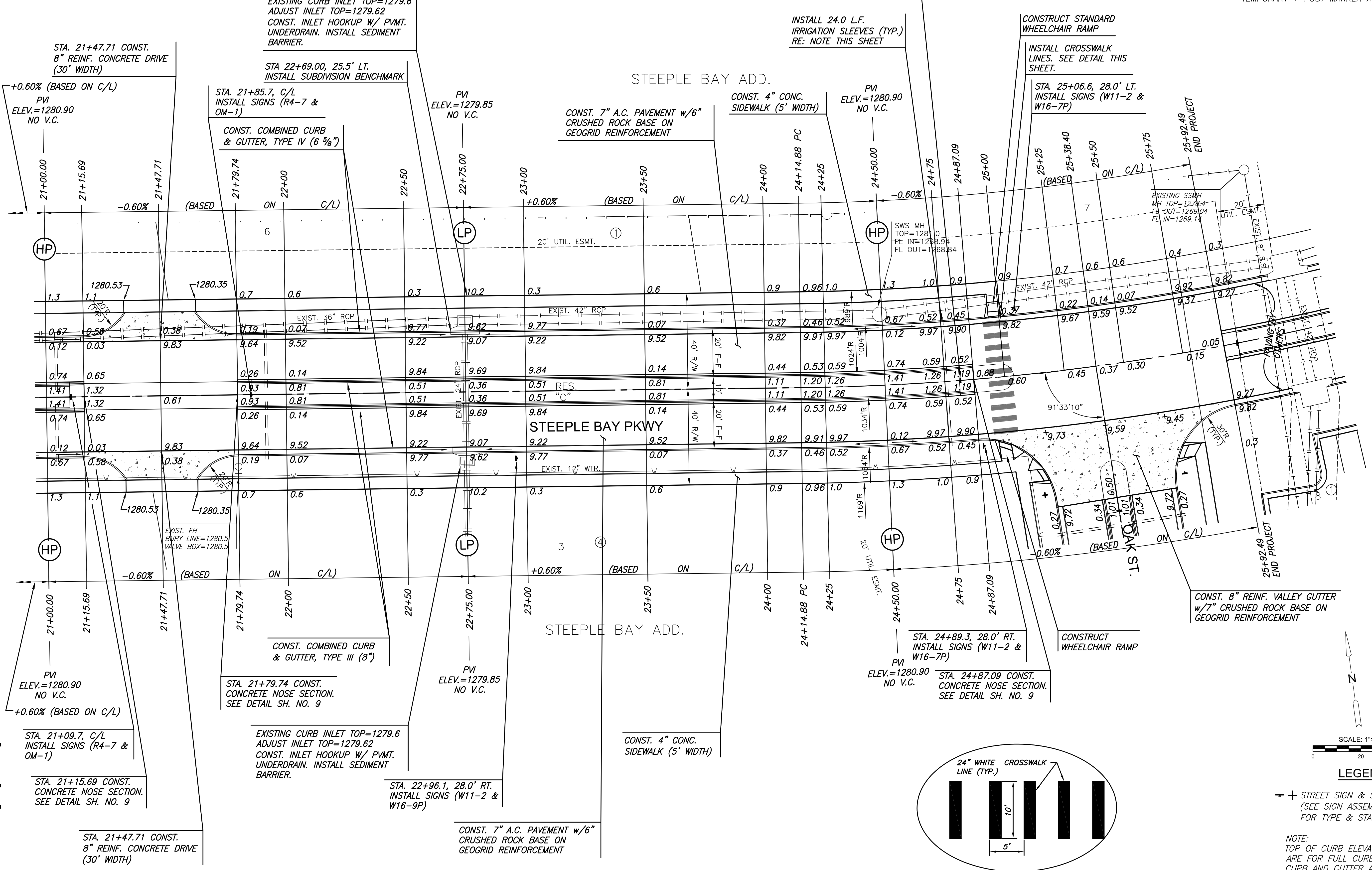


J:\PROJECTS\2017\1701010143_LANES_STEEPLE BAY_17143_CADD\SHOTS\DWG\CIVIL\PAV17143-05-502.DWG
 PLOTTED: Thursday, December 27, 2018 @ 10:57AM

SUBDIVISION BENCH MARKS				
NO.	STREET AND STATION	FROM CL	DESCRIPTION	ELEVATIONS
3	STEEPLE BAY, STA. 22+69.0	25.5' LT	TOP OF CURB AT W END OF INLET HOOKUP	

NOTE: CONTRACTOR SHALL INSTALL SUBDIVISION BENCH MARKS ("FLAT SURVEY MARKERS NO. 8134-08 3" TOP DIAMETER" PROVIDED BY KANSAS BLUE PRINT CO., INC.) COSTS TO BE CONSIDERED SUBSIDIARY TO CONSTRUCTION OF COMBINED CURB AND GUTTER.



NOTE:
 INSTALL IRRIGATION SLEEVES IN LOCATIONS NOTED ON THE PLANS. TWO SLEEVES ARE REQUIRED IN EACH LOCATION: ONE (1) 1.5" AND ONE (1) 4" PVC CLASS 200 SDR 21 SLEEVES. BOTH SHALL EXTEND 18" BEYOND THE BACK OF CURB, BUILDING, OR SIDEWALK AND BE MARKED. INSTALL TEMPORARY T-POST MARKER AT SLEEVE ENDS.



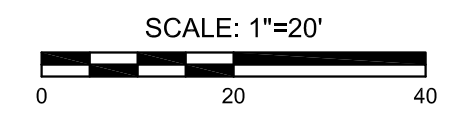
PAVING & INCIDENTAL DRAINAGE FOR
STEEPLE BAY ADDITION
 WICHITA, KANSAS

©2018 MKEC Engineering All Rights Reserved
 www.mkec.com
 These drawings and their contents, including, but not limited to, all concepts, designs, & ideas are the exclusive property of MKEC Engineering (MKEC), and may not be used or reproduced in any way without the express consent of MKEC.

STEEPLE BAY PKWY PLAN

PROJECT NO.	472-85452	
DATE	DEC. 2018	
SCALE	1"=20'	
DESIGNED	DRAWN	CHECKED
SPE	WNJ	SPE

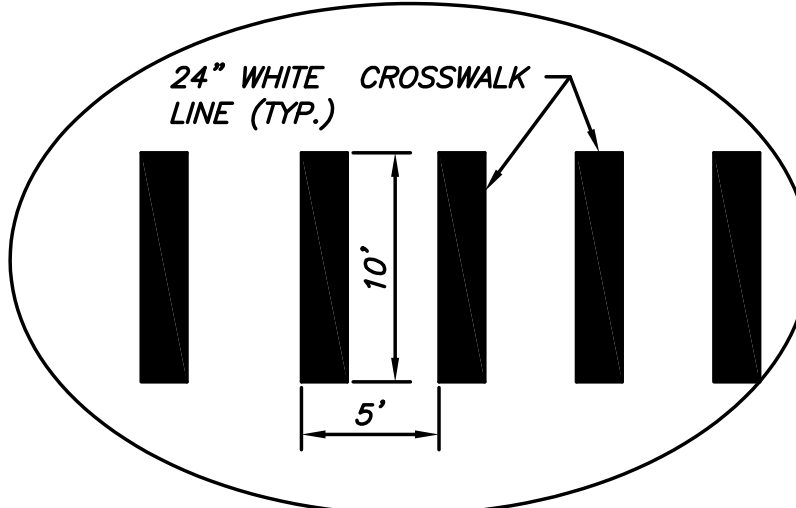
NO.	REVISION	DATE



LEGEND

—+— STREET SIGN & SIGN LOCATION (SEE SIGN ASSEMBLY TABLE FOR TYPE & STATION OF SIGN)

NOTE:
 TOP OF CURB ELEVATIONS SHOWN ARE FOR FULL CURB. CONSTRUCT CURB AND GUTTER AS NOTED.



CROSSWALK DETAIL