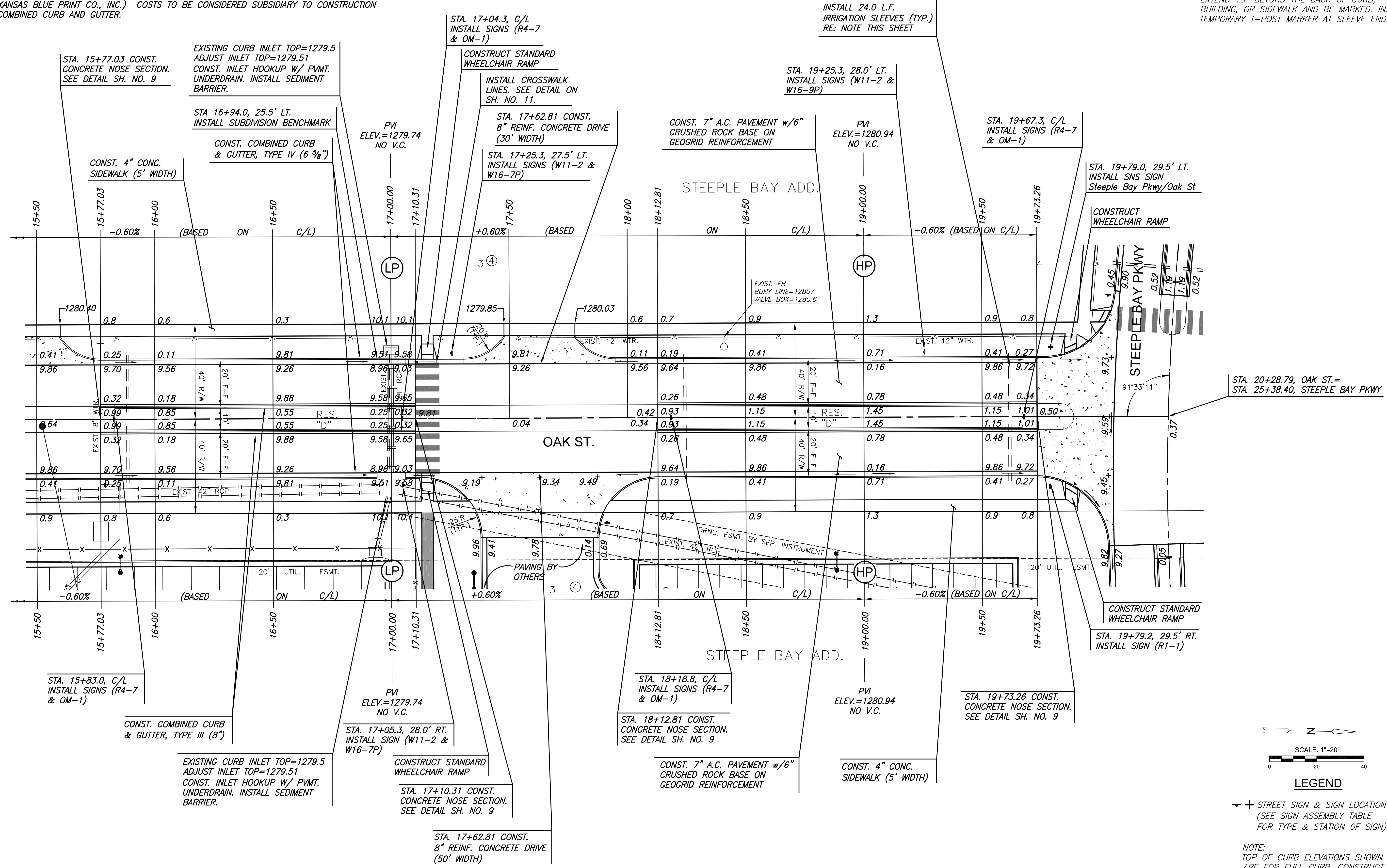


J:\PROJECTS\2017\1701010143_LANES_STEEPLE BAY_17143_CADD\SHOTS\06_CIVIL\PAV17143-06-5004.DWG
 PLOTTED: Thursday, December 27, 2018 @ 10:59AM

SUBDIVISION BENCH MARKS			
NO.	STREET AND STATION	FROM CL	DESCRIPTION
5	OAK, STA. 16+94.0	25.5' LT	TOP OF CURB AT W END OF INLET HOOKUP

NOTE: CONTRACTOR SHALL INSTALL SUBDIVISION BENCH MARKS ("FLAT SURVEY MARKERS NO. 8134-08 3" TOP DIAMETER" PROVIDED BY KANSAS BLUE PRINT CO., INC.) COSTS TO BE CONSIDERED SUBSIDIARY TO CONSTRUCTION OF COMBINED CURB AND GUTTER.

NOTE:
 INSTALL IRRIGATION SLEEVES IN LOCATIONS NOTED ON THE PLANS. TWO SLEEVES ARE REQUIRED IN EACH LOCATION: ONE (1) 1.5" AND ONE (1) 4" PVC CLASS 200 SDR 21 SLEEVES. BOTH SHALL EXTEND 18" BEYOND THE BACK OF CURB, BUILDING, OR SIDEWALK AND BE MARKED. INSTALL TEMPORARY T-POST MARKER AT SLEEVE ENDS.



PAVING & INCIDENTAL DRAINAGE FOR
STEEPLE BAY ADDITION
 WICHITA, KANSAS

©2018
 MKEC Engineering
 All Rights Reserved
 www.mkec.com
 These drawings and their contents, including, but not limited to, all concepts, designs, & ideas are the exclusive property of MKEC Engineering (MKEC), and may not be used or reproduced in any way without the express consent of MKEC.

OAK ST. PLAN

PROJECT NO.	472-85452	
DATE	DEC. 2018	
SCALE	1"=20'	
DESIGNED	DRAWN	CHECKED
SPE	WNJ	SPE
NO.	REVISION	DATE
SHEET NO.		